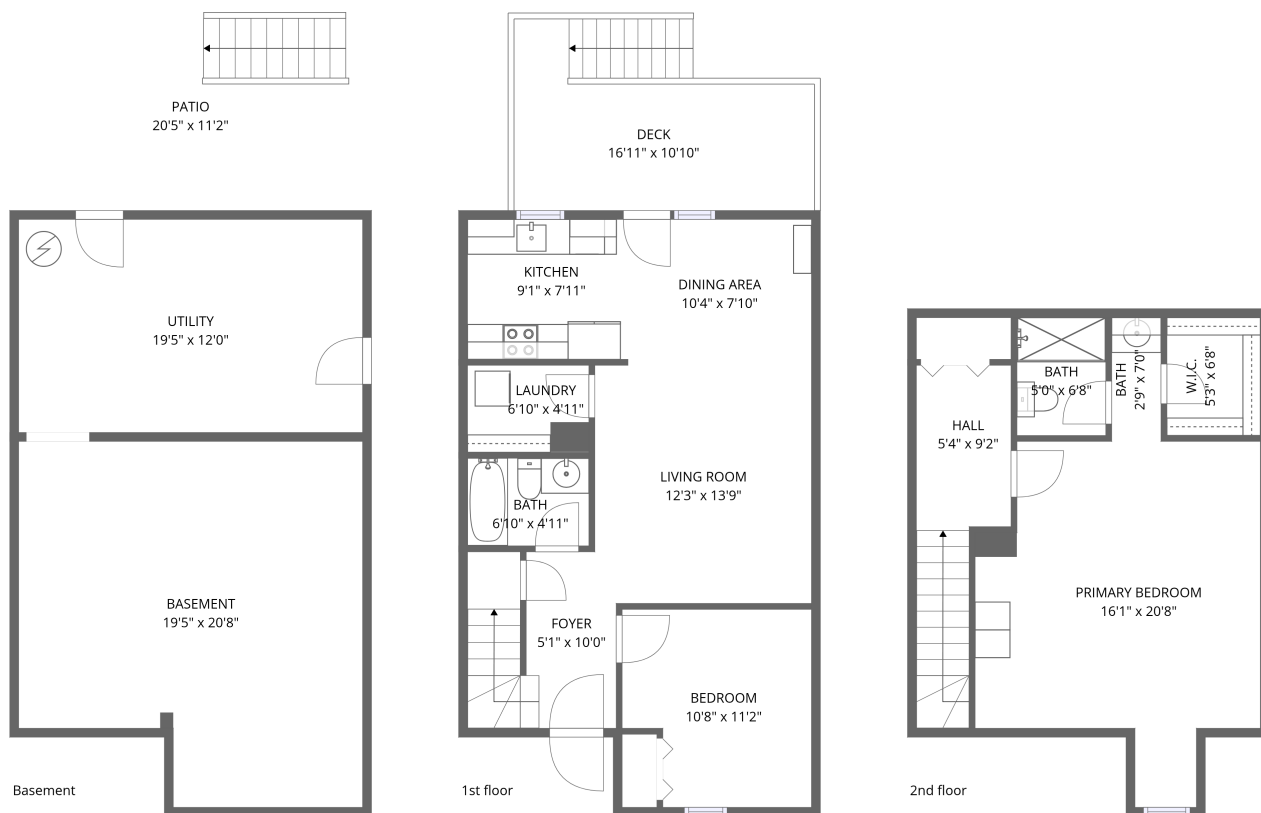


Home data report

1934 Walnut Ave, Jefferson City, TN, US



Total Area: 1072 sq. ft

Basement: 0 sq. ft, 1st Floor: 606 sq. ft, 2nd Floor: 466 sq. ft

Excluded: Basement 362 sq. ft, Utility 234 sq. ft, Patio 228 sq. ft, Deck 156 sq. ft, Walls: 144 sq. ft

Property summary

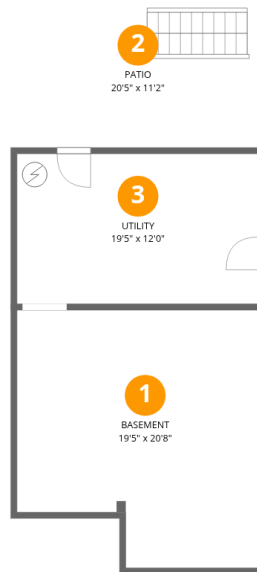
 **3** Floors

 **2** Bedrooms

 **2** Bathrooms

Home data report

1934 Walnut Ave, Jefferson City, TN, US



Room dimensions

Floor 1 Below grade

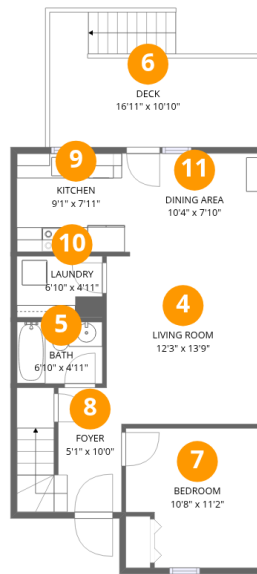
Total: 0sqft

Excluded: 824sqft

#		Dimensions	sqft	Counted as living area
1	Basement	19'5" x 20'8"	362 sq. ft	No
2	Patio	20'5" x 11'2"	228 sq. ft	No
3	Utility	19'5" x 12'0"	234 sq. ft	No

Home data report

1934 Walnut Ave, Jefferson City, TN, US



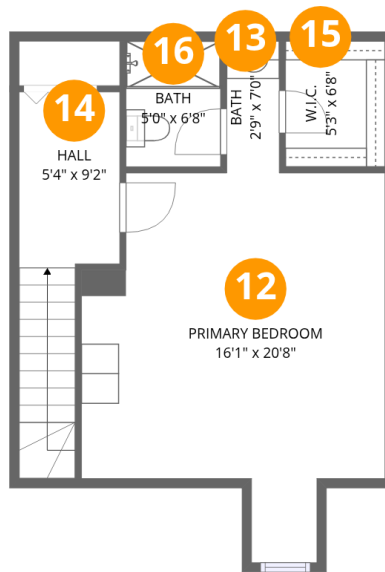
Room dimensions

Floor 2

Total:606sqft

Excluded: 156sqft

#		Dimensions	sqft	Counted as living area
4	Living Room	12'3" x 13'9"	168 sq. ft	Yes
5	Bath	6'10" x 4'11"	34 sq. ft	Yes
6	Deck	16'11" x 10'10"	156 sq. ft	No
7	Bedroom	10'8" x 11'2"	109 sq. ft	Yes
8	Foyer	5'1" x 10'0"	68 sq. ft	Yes
9	Kitchen	9'1" x 7'11"	72 sq. ft	Yes
10	Laundry	6'10" x 4'11"	34 sq. ft	Yes
11	Dining Area	10'4" x 7'10"	82 sq. ft	Yes



Room dimensions

Floor 3

Total:466sqft

Excluded: 0sqft

#		Dimensions	sqft	Counted as living area
12	Primary Bedroom	16'1" x 20'8"	264 sq. ft	Yes
13	Bath	2'9" x 7'0"	19 sq. ft	Yes
14	Hall	5'4" x 9'2"	83 sq. ft	Yes
15	W.I.C.	5'3" x 6'8"	35 sq. ft	Yes
16	Bath	5'0" x 6'8"	33 sq. ft	Yes

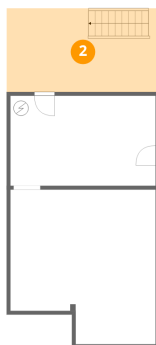
1 Floor 1 - Basement



Dimensions: 19'5" x 20'8"
Area: 362 sq. ft
Counted as living area: No

Heated: Yes
Finished: No
Enclosed: Yes
Contiguous: Yes
Permitted: Yes
Wet space: No
Addition: No
Conversion: No

2 Floor 1 - Patio



Dimensions: 20'5" x 11'2"
Area: 228 sq. ft
Counted as living area: No

Heated: No
Finished: No
Enclosed: No
Contiguous: Yes
Permitted: Yes
Wet space: No
Addition: No
Conversion: No

3 Floor 1 - Utility



Dimensions: 19'5" x 12'0"
Area: 234 sq. ft
Counted as living area: No

Heated: Yes
Finished: No
Enclosed: Yes
Contiguous: Yes
Permitted: Yes
Wet space: No
Addition: No
Conversion: No

4 Floor 2 - Living Room



Dimensions: 12'3" x 13'9"
Area: 168 sq. ft
Counted as living area: Yes

Heated: Yes
Finished: Yes
Enclosed: Yes
Contiguous: Yes
Permitted: Yes
Wet space: No
Addition: No
Conversion: No

5 Floor 2 - Bath



Dimensions: 6'10" x 4'11"
Area: 34 sq. ft
Counted as living area: Yes

Heated: Yes
Finished: Yes
Enclosed: Yes
Contiguous: Yes
Permitted: Yes
Wet space: Yes
Addition: No
Conversion: No

6 Floor 2 - Deck



Dimensions: 16'11" x 10'10"

Area: 156 sq. ft

Counted as living area: No

Heated: No

Finished: No

Enclosed: No

Contiguous: Yes

Permitted: Yes

Wet space: No

Addition: No

Conversion: No

7 Floor 2 - Bedroom



Dimensions: 10'8" x 11'2"

Area: 109 sq. ft

Counted as living area: Yes

Heated: Yes

Finished: Yes

Enclosed: Yes

Contiguous: Yes

Permitted: Yes

Wet space: No

Addition: No

Conversion: No

8 Floor 2 - Foyer



Dimensions: 5'1" x 10'0"

Area: 68 sq. ft

Counted as living area: Yes

Heated: Yes

Finished: Yes

Enclosed: Yes

Contiguous: Yes

Permitted: Yes

Wet space: No

Addition: No

Conversion: No

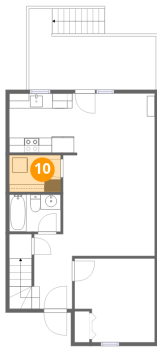
9 Floor 2 - Kitchen



Dimensions: 9'1" x 7'11"
Area: 72 sq. ft
Counted as living area: Yes

Heated: Yes
Finished: Yes
Enclosed: Yes
Contiguous: Yes
Permitted: Yes
Wet space: No
Addition: No
Conversion: No

10 Floor 2 - Laundry



Dimensions: 6'10" x 4'11"
Area: 34 sq. ft
Counted as living area: Yes

Heated: Yes
Finished: Yes
Enclosed: Yes
Contiguous: Yes
Permitted: Yes
Wet space: No
Addition: No
Conversion: No

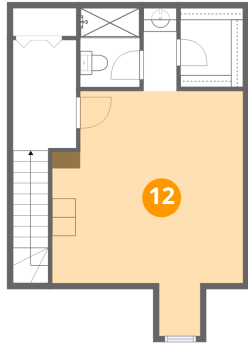
11 Floor 2 - Dining Area



Dimensions: 10'4" x 7'10"
Area: 82 sq. ft
Counted as living area: Yes

Heated: Yes
Finished: Yes
Enclosed: Yes
Contiguous: Yes
Permitted: Yes
Wet space: No
Addition: No
Conversion: No

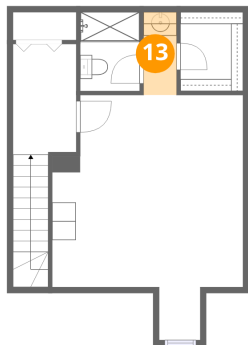
12 Floor 3 - Primary Bedroom



Dimensions: 16'1" x 20'8"
Area: 264 sq. ft
Counted as living area: Yes

Heated: Yes
Finished: Yes
Enclosed: Yes
Contiguous: Yes
Permitted: Yes
Wet space: No
Addition: No
Conversion: No

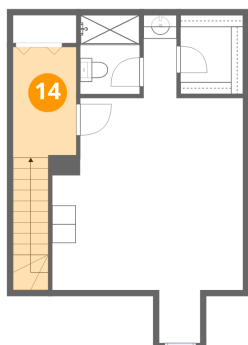
13 Floor 3 - Bath



Dimensions: 2'9" x 7'0"
Area: 19 sq. ft
Counted as living area: Yes

Heated: Yes
Finished: Yes
Enclosed: Yes
Contiguous: Yes
Permitted: Yes
Wet space: Yes
Addition: No
Conversion: No

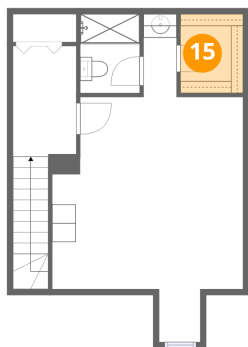
14 Floor 3 - Hall



Dimensions: 5'4" x 9'2"
Area: 83 sq. ft
Counted as living area: Yes

Heated: Yes
Finished: Yes
Enclosed: Yes
Contiguous: Yes
Permitted: Yes
Wet space: No
Addition: No
Conversion: No

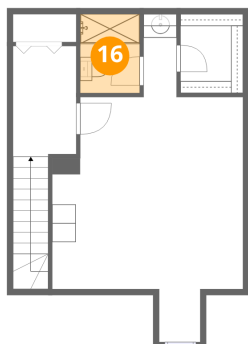
15 Floor 3 - W.I.C.



Dimensions: 5'3" x 6'8"
Area: 35 sq. ft
Counted as living area: Yes

Heated: Yes
Finished: Yes
Enclosed: Yes
Contiguous: Yes
Permitted: Yes
Wet space: No
Addition: No
Conversion: No

16 Floor 3 - Bath



Dimensions: 5'0" x 6'8"
Area: 33 sq. ft
Counted as living area: Yes

Heated: Yes
Finished: Yes
Enclosed: Yes
Contiguous: Yes
Permitted: Yes
Wet space: Yes
Addition: No
Conversion: No