

Home data report

101 Trout Lily Dr, Lake Frederick, VA, US



Total Area: 2137 sq. ft

1st Floor: 587 sq. ft, 2nd Floor: 775 sq. ft, 3rd Floor: 775 sq. ft

Excluded: Garage 174 sq. ft, Balcony 133 sq. ft, Walls: 154 sq. ft

Property summary

 **3** Floors

 **4** Bedrooms

 **3** Bathrooms

Home data report

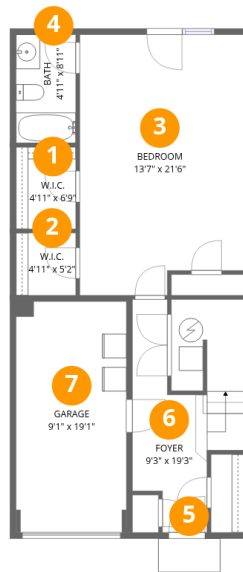
101 Trout Lily Dr, Lake Frederick, VA, US

 **1**
Half baths

 **1**
Garages

Home data report

101 Trout Lily Dr, Lake Frederick, VA, US



Room dimensions

Floor 1

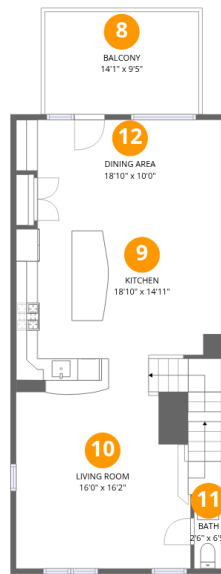
Total: 587sqft

Excluded: 174sqft

#		Dimensions	sqft	Counted as living area
1	W.I.C.	4'11" x 6'9"	33 sq. ft	Yes
2	W.I.C.	4'11" x 5'2"	25 sq. ft	Yes
3	Bedroom	13'7" x 21'6"	292 sq. ft	Yes
4	Bath	4'11" x 8'11"	44 sq. ft	Yes
5	Outdoor	5'1" x 2'9"	14 sq. ft	No
6	Foyer	9'3" x 19'3"	177 sq. ft	Yes
7	Garage	9'1" x 19'1"	174 sq. ft	No

Home data report

101 Trout Lily Dr, Lake Frederick, VA, US



Room dimensions

Floor 2

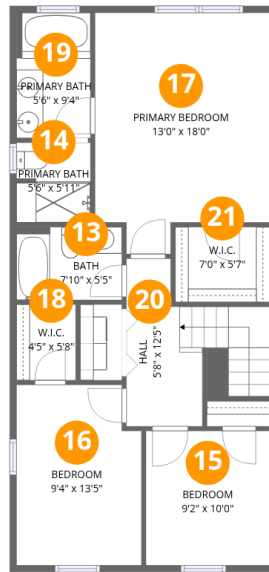
Total: 775 sqft

Excluded: 133 sqft

#		Dimensions	sqft	Counted as living area
8	Balcony	14'1" x 9'5"	132 sq. ft	No
9	Kitchen	18'10" x 14'11"	281 sq. ft	Yes
10	Living Room	16'0" x 16'2"	259 sq. ft	Yes
11	Bath	2'6" x 6'5"	16 sq. ft	Yes
12	Dining Area	18'10" x 10'0"	189 sq. ft	Yes

Home data report

101 Trout Lily Dr, Lake Frederick, VA, US



Room dimensions

Floor 3

Total: 775 sqft Excluded: 0 sqft

#		Dimensions	sqft	Counted as living area
13	Bath	7'10" x 5'5"	42 sq. ft	Yes
14	Primary Bath	5'6" x 5'11"	33 sq. ft	Yes
15	Bedroom	9'2" x 10'0"	92 sq. ft	Yes
16	Bedroom	9'4" x 13'5"	125 sq. ft	Yes
17	Primary Bedroom	13'0" x 18'0"	233 sq. ft	Yes
18	W.I.C.	4'5" x 5'8"	25 sq. ft	Yes
19	Primary Bath	5'6" x 9'4"	51 sq. ft	Yes
20	Hall	5'8" x 12'5"	71 sq. ft	Yes
21	W.I.C.	7'0" x 5'7"	39 sq. ft	Yes

1 Floor 1 - W.I.C.



Dimensions: 4'11" x 6'9"
Area: 33 sq. ft
Counted as living area: Yes

Heated: Yes
Finished: Yes
Enclosed: Yes
Contiguous: Yes
Permitted: Yes
Wet space: No
Addition: No
Conversion: No

2 Floor 1 - W.I.C.



Dimensions: 4'11" x 5'2"
Area: 25 sq. ft
Counted as living area: Yes

Heated: Yes
Finished: Yes
Enclosed: Yes
Contiguous: Yes
Permitted: Yes
Wet space: No
Addition: No
Conversion: No

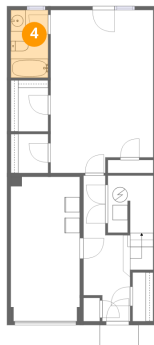
3 Floor 1 - Bedroom



Dimensions: 13'7" x 21'6"
Area: 292 sq. ft
Counted as living area: Yes

Heated: Yes
Finished: Yes
Enclosed: Yes
Contiguous: Yes
Permitted: Yes
Wet space: No
Addition: No
Conversion: No

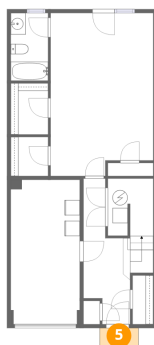
4 Floor 1 - Bath



Dimensions: 4'11" x 8'11"
Area: 44 sq. ft
Counted as living area: Yes

Heated: Yes
Finished: Yes
Enclosed: Yes
Contiguous: Yes
Permitted: Yes
Wet space: Yes
Addition: No
Conversion: No

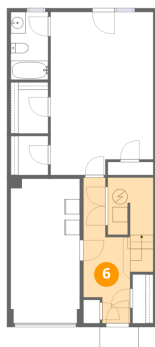
5 Floor 1 - Outdoor



Dimensions: 5'1" x 2'9"
Area: 14 sq. ft
Counted as living area: No

Heated: No
Finished: No
Enclosed: No
Contiguous: Yes
Permitted: No
Wet space: No
Addition: No
Conversion: No

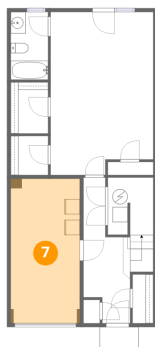
6 Floor 1 - Foyer



Dimensions: 9'3" x 19'3"
Area: 177 sq. ft
Counted as living area: Yes

Heated: Yes
Finished: Yes
Enclosed: Yes
Contiguous: Yes
Permitted: Yes
Wet space: No
Addition: No
Conversion: No

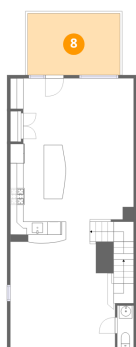
7 Floor 1 - Garage



Dimensions: 9'1" x 19'1"
Area: 174 sq. ft
Counted as living area: No

Heated: No
Finished: No
Enclosed: Yes
Contiguous: Yes
Permitted: Yes
Wet space: No
Addition: No
Conversion: No

8 Floor 2 - Balcony



Dimensions: 14'1" x 9'5"
Area: 132 sq. ft
Counted as living area: No

Heated: No
Finished: No
Enclosed: No
Contiguous: Yes
Permitted: Yes
Wet space: No
Addition: No
Conversion: No

9 Floor 2 - Kitchen



Dimensions: 18'10" x 14'11"

Area: 281 sq. ft

Counted as living area: Yes

Heated: Yes

Finished: Yes

Enclosed: Yes

Contiguous: Yes

Permitted: Yes

Wet space: No

Addition: No

Conversion: No

10 Floor 2 - Living Room



Dimensions: 16'0" x 16'2"

Area: 259 sq. ft

Counted as living area: Yes

Heated: Yes

Finished: Yes

Enclosed: Yes

Contiguous: Yes

Permitted: Yes

Wet space: No

Addition: No

Conversion: No

11 Floor 2 - Bath



Dimensions: 2'6" x 6'5"

Area: 16 sq. ft

Counted as living area: Yes

Heated: Yes

Finished: Yes

Enclosed: Yes

Contiguous: Yes

Permitted: Yes

Wet space: Yes

Addition: No

Conversion: No

12 Floor 2 - Dining Area



Dimensions: 18'10" x 10'0"
Area: 189 sq. ft
Counted as living area: Yes

Heated: Yes
Finished: Yes
Enclosed: Yes
Contiguous: Yes
Permitted: Yes
Wet space: No
Addition: No
Conversion: No

13 Floor 3 - Bath



Dimensions: 7'10" x 5'5"
Area: 42 sq. ft
Counted as living area: Yes

Heated: Yes
Finished: Yes
Enclosed: Yes
Contiguous: Yes
Permitted: Yes
Wet space: Yes
Addition: No
Conversion: No

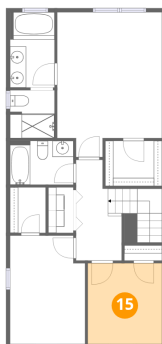
14 Floor 3 - Primary Bath



Dimensions: 5'6" x 5'11"
Area: 33 sq. ft
Counted as living area: Yes

Heated: Yes
Finished: Yes
Enclosed: Yes
Contiguous: Yes
Permitted: Yes
Wet space: Yes
Addition: No
Conversion: No

15 Floor 3 - Bedroom



Dimensions: 9'2" x 10'0"
Area: 92 sq. ft
Counted as living area: Yes

Heated: Yes
Finished: Yes
Enclosed: Yes
Contiguous: Yes
Permitted: Yes
Wet space: No
Addition: No
Conversion: No

16 Floor 3 - Bedroom



Dimensions: 9'4" x 13'5"
Area: 125 sq. ft
Counted as living area: Yes

Heated: Yes
Finished: Yes
Enclosed: Yes
Contiguous: Yes
Permitted: Yes
Wet space: No
Addition: No
Conversion: No

17 Floor 3 - Primary Bedroom



Dimensions: 13'0" x 18'0"
Area: 233 sq. ft
Counted as living area: Yes

Heated: Yes
Finished: Yes
Enclosed: Yes
Contiguous: Yes
Permitted: Yes
Wet space: No
Addition: No
Conversion: No

18 Floor 3 - W.I.C.



Dimensions: 4'5" x 5'8"
Area: 25 sq. ft
Counted as living area: Yes

Heated: Yes
Finished: Yes
Enclosed: Yes
Contiguous: Yes
Permitted: Yes
Wet space: No
Addition: No
Conversion: No

19 Floor 3 - Primary Bath



Dimensions: 5'6" x 9'4"
Area: 51 sq. ft
Counted as living area: Yes

Heated: Yes
Finished: Yes
Enclosed: Yes
Contiguous: Yes
Permitted: Yes
Wet space: Yes
Addition: No
Conversion: No

20 Floor 3 - Hall



Dimensions: 5'8" x 12'5"
Area: 71 sq. ft
Counted as living area: Yes

Heated: Yes
Finished: Yes
Enclosed: Yes
Contiguous: Yes
Permitted: Yes
Wet space: No
Addition: No
Conversion: No

21 Floor 3 - W.I.C.



Dimensions: 7'0" x 5'7"
Area: 39 sq. ft
Counted as living area: Yes

Heated: Yes
Finished: Yes
Enclosed: Yes
Contiguous: Yes
Permitted: Yes
Wet space: No
Addition: No
Conversion: No