

# Home data report

## 2438 Robin Hood Road Southeast, South Roanoke, Roanoke, Roanoke city, Virginia, United States, 24014




**Total Area: 5319 sq. ft**

1st Floor: 1045 sq. ft, 2nd Floor: 1832 sq. ft, 3rd Floor: 1833 sq. ft, 4th Floor: 609 sq. ft  
Excluded: Garage 507 sq. ft, Storage 118 sq. ft, Elevator 75 sq. ft, Electrical room 28 sq. ft, Fireplace 32 sq. ft, Porch 492 sq. ft, Patio 1094 sq. ft, Balcony 469 sq. ft, Walls: 386 sq. ft

### Property summary

 **4** Floors

 **4** Bedrooms

 **3** Bathrooms

Home data report

**2438 Robin Hood Road Southeast, South Roanoke, Roanoke,  
Roanoke city, Virginia, United States, 24014**



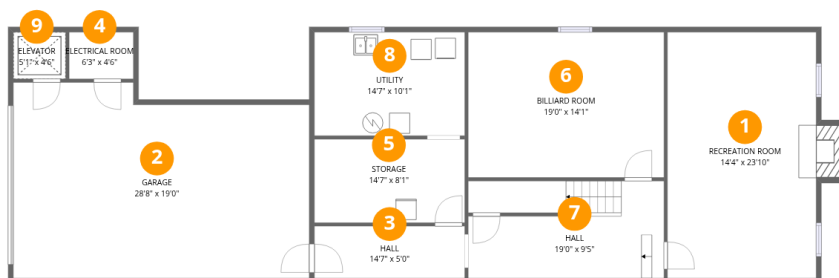
**1**  
Half baths



**1**  
Garages

## Home data report

2438 Robin Hood Road Southeast, South Roanoke, Roanoke, Roanoke city, Virginia, United States, 24014



## Room dimensions

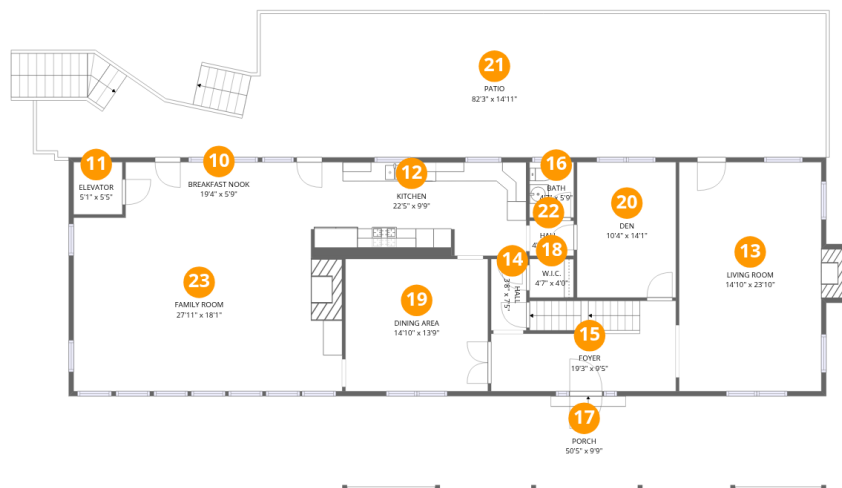
Floor 1

Total:1045sqft Excluded: 692sqft

#		Dimensions	sqft	Counted as living area
1	Recreation Room	14'4" x 23'10"	342 sq. ft	Yes
2	Garage	28'8" x 19'0"	544 sq. ft	No
3	Hall	14'7" x 5'0"	73 sq. ft	Yes
4	Electrical Room	6'3" x 4'6"	28 sq. ft	No
5	Storage	14'7" x 8'1"	118 sq. ft	No
6	Billiard Room	19'0" x 14'1"	268 sq. ft	Yes
7	Hall	19'0" x 9'5"	179 sq. ft	Yes
8	Utility	14'7" x 10'1"	146 sq. ft	Yes
9	Elevator	5'1" x 4'6"	23 sq. ft	No

## Home data report

2438 Robin Hood Road Southeast, South Roanoke, Roanoke, Roanoke city, Virginia, United States, 24014



## Room dimensions

Floor 2

Total:1832sqft

Excluded: 1630sqft

#		Dimensions	sqft	Counted as living area
10	Breakfast Nook	19'4" x 5'9"	111 sq. ft	Yes
11	Elevator	5'1" x 5'5"	28 sq. ft	No
12	Kitchen	22'5" x 9'9"	218 sq. ft	Yes
13	Living Room	14'10" x 23'10"	353 sq. ft	Yes
14	Hall	3'8" x 7'5"	27 sq. ft	Yes
15	Foyer	19'3" x 9'5"	181 sq. ft	Yes
16	Bath	4'7" x 5'9"	27 sq. ft	Yes
17	Porch	50'5" x 9'9"	492 sq. ft	No
18	W.I.C.	4'7" x 4'0"	19 sq. ft	Yes
19	Dining Area	14'10" x 13'9"	204 sq. ft	Yes
20	Den	10'4" x 14'1"	145 sq. ft	Yes

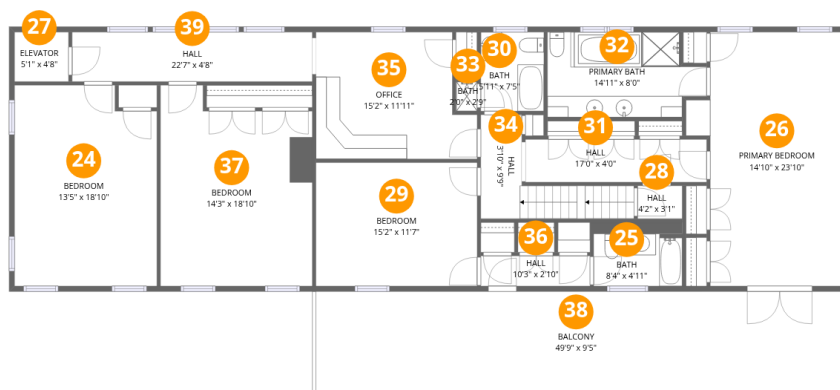
Home data report

**2438 Robin Hood Road Southeast, South Roanoke, Roanoke,  
Roanoke city, Virginia, United States, 24014**

#		Dimensions	sqft	Counted as living area
21	Patio	82'3" x 14'11"	1230 sq. ft	No
22	Hall	4'7" x 3'8"	17 sq. ft	Yes
23	Family Room	27'11" x 18'1"	505 sq. ft	Yes

## Home data report

2438 Robin Hood Road Southeast, South Roanoke, Roanoke, Roanoke city, Virginia, United States, 24014



## Room dimensions

Floor 3

Total:1833sqft Excluded: 493sqft

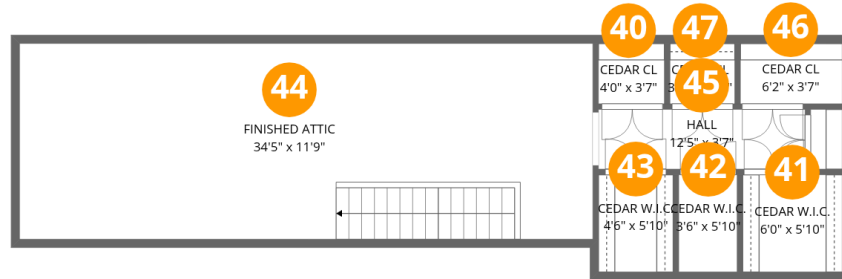
#		Dimensions	sqft	Counted as living area
24	Bedroom	13'5" x 18'10"	252 sq. ft	Yes
25	Bath	8'4" x 4'11"	41 sq. ft	Yes
26	Primary Bedroom	14'10" x 23'10"	353 sq. ft	Yes
27	Elevator	5'1" x 4'8"	24 sq. ft	No
28	Hall	4'2" x 3'1"	13 sq. ft	Yes
29	Bedroom	15'2" x 11'7"	176 sq. ft	Yes
30	Bath	5'11" x 7'5"	44 sq. ft	Yes
31	Hall	17'0" x 4'0"	68 sq. ft	Yes
32	Primary Bath	14'11" x 8'0"	120 sq. ft	Yes
33	Bath	2'0" x 2'9"	6 sq. ft	Yes
34	Hall	3'10" x 9'9"	38 sq. ft	Yes

Home data report

**2438 Robin Hood Road Southeast, South Roanoke, Roanoke,  
Roanoke city, Virginia, United States, 24014**

#		Dimensions	sqft	Counted as living area
35	Office	15'2" x 11'11"	181 sq. ft	Yes
36	Hall	10'3" x 2'10"	29 sq. ft	Yes
37	Bedroom	14'3" x 18'10"	269 sq. ft	Yes
38	Balcony	49'9" x 9'5"	469 sq. ft	No
39	Hall	22'7" x 4'8"	105 sq. ft	Yes

2438 Robin Hood Road Southeast, South Roanoke, Roanoke, Roanoke city, Virginia, United States, 24014



## Room dimensions

Floor 4

Total:609sqft

Excluded: 0sqft

#		Dimensions	sqft	Counted as living area
40	Cedar Cl	4'0" x 3'7"	14 sq. ft	Yes
41	Cedar W.I.C.	6'0" x 5'10"	35 sq. ft	Yes
42	Cedar W.I.C.	3'6" x 5'10"	20 sq. ft	Yes
43	Cedar W.I.C.	4'6" x 5'10"	26 sq. ft	Yes
44	Finished Attic	34'5" x 11'9"	404 sq. ft	Yes
45	Hall	12'5" x 3'7"	44 sq. ft	Yes
46	Cedar Cl	6'2" x 3'7"	22 sq. ft	Yes
47	Cedar Cl	3'11" x 3'7"	14 sq. ft	Yes

2438 Robin Hood Road Southeast, South Roanoke, Roanoke,  
Roanoke city, Virginia, United States, 24014

## 1 Floor 1 - Recreation Room

---



Dimensions: 14'4" x 23'10"  
Area: 342 sq. ft  
Counted as living area: Yes

Heated: Yes  
Finished: Yes  
Enclosed: Yes  
Contiguous: Yes  
Permitted: Yes  
Wet space: No  
Addition: No  
Conversion: No

## 2 Floor 1 - Garage

---



Dimensions: 28'8" x 19'0"  
Area: 544 sq. ft  
Counted as living area: No

Heated: No  
Finished: No  
Enclosed: Yes  
Contiguous: Yes  
Permitted: Yes  
Wet space: No  
Addition: No  
Conversion: No

2438 Robin Hood Road Southeast, South Roanoke, Roanoke,  
Roanoke city, Virginia, United States, 24014

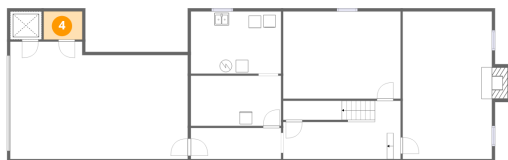
**3** Floor 1 - Hall



Dimensions: 14'7" x 5'0"  
Area: 73 sq. ft  
Counted as living area: Yes

Heated: Yes  
Finished: Yes  
Enclosed: Yes  
Contiguous: Yes  
Permitted: Yes  
Wet space: No  
Addition: No  
Conversion: No

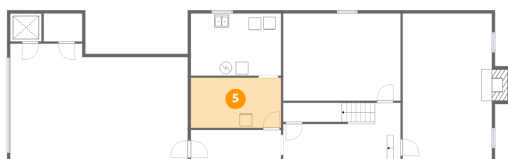
**4** Floor 1 - Electrical Room



Dimensions: 6'3" x 4'6"  
Area: 28 sq. ft  
Counted as living area: No

Heated: No  
Finished: No  
Enclosed: Yes  
Contiguous: No  
Permitted: Yes  
Wet space: No  
Addition: No  
Conversion: No

**5** Floor 1 - Storage

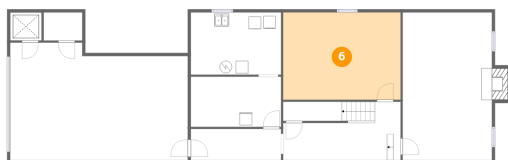


Dimensions: 14'7" x 8'1"  
Area: 118 sq. ft  
Counted as living area: No

Heated: No  
Finished: No  
Enclosed: No  
Contiguous: No  
Permitted: Yes  
Wet space: No  
Addition: No  
Conversion: No

2438 Robin Hood Road Southeast, South Roanoke, Roanoke,  
Roanoke city, Virginia, United States, 24014

**6** Floor 1 - Billiard Room



Dimensions: 19'0" x 14'1"  
Area: 268 sq. ft  
Counted as living area: Yes

Heated: Yes  
Finished: Yes  
Enclosed: Yes  
Contiguous: Yes  
Permitted: Yes  
Wet space: No  
Addition: No  
Conversion: No

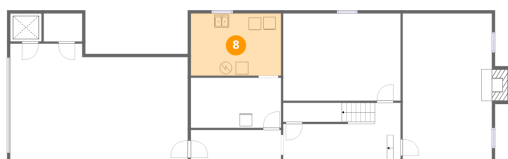
**7** Floor 1 - Hall



Dimensions: 19'0" x 9'5"  
Area: 179 sq. ft  
Counted as living area: Yes

Heated: Yes  
Finished: Yes  
Enclosed: Yes  
Contiguous: Yes  
Permitted: Yes  
Wet space: No  
Addition: No  
Conversion: No

**8** Floor 1 - Utility

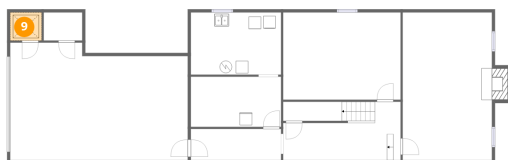


Dimensions: 14'7" x 10'1"  
Area: 146 sq. ft  
Counted as living area: Yes

Heated: Yes  
Finished: Yes  
Enclosed: Yes  
Contiguous: Yes  
Permitted: Yes  
Wet space: No  
Addition: No  
Conversion: No

2438 Robin Hood Road Southeast, South Roanoke, Roanoke, Roanoke city, Virginia, United States, 24014

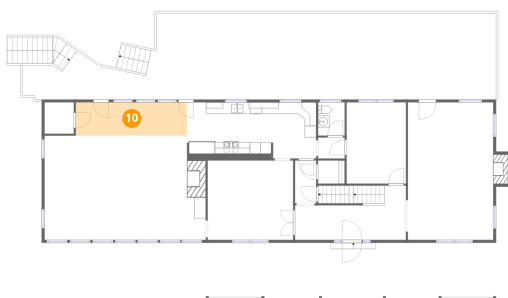
9 Floor 1 - Elevator



Dimensions: 5'1" x 4'6"  
Area: 23 sq. ft  
Counted as living area: No

Heated: No  
Finished: No  
Enclosed: Yes  
Contiguous: No  
Permitted: Yes  
Wet space: No  
Addition: No  
Conversion: No

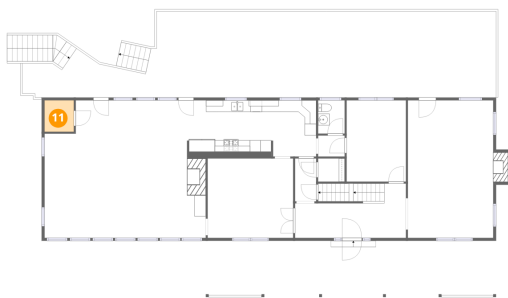
10 Floor 2 - Breakfast Nook



Dimensions: 19'4" x 5'9"  
Area: 111 sq. ft  
Counted as living area: Yes

Heated: Yes  
Finished: Yes  
Enclosed: Yes  
Contiguous: Yes  
Permitted: Yes  
Wet space: No  
Addition: No  
Conversion: No

11 Floor 2 - Elevator

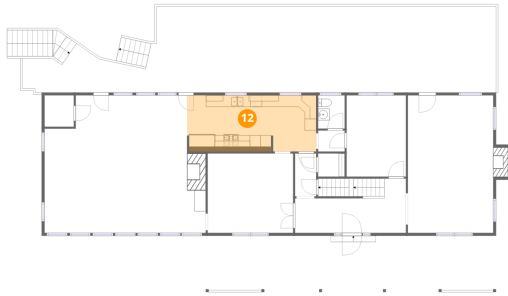


Dimensions: 5'1" x 5'5"  
Area: 28 sq. ft  
Counted as living area: No

Heated: No  
Finished: No  
Enclosed: Yes  
Contiguous: No  
Permitted: Yes  
Wet space: No  
Addition: No  
Conversion: No

2438 Robin Hood Road Southeast, South Roanoke, Roanoke,  
Roanoke city, Virginia, United States, 24014

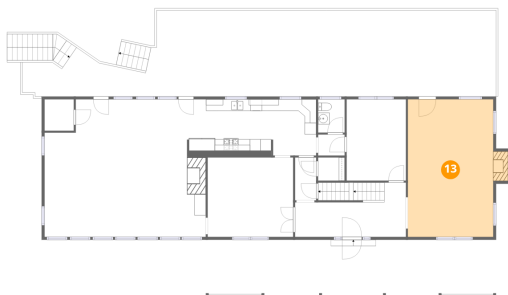
**12** Floor 2 - Kitchen



Dimensions: 22'5" x 9'9"  
Area: 218 sq. ft  
Counted as living area: Yes

Heated: Yes  
Finished: Yes  
Enclosed: Yes  
Contiguous: Yes  
Permitted: Yes  
Wet space: No  
Addition: No  
Conversion: No

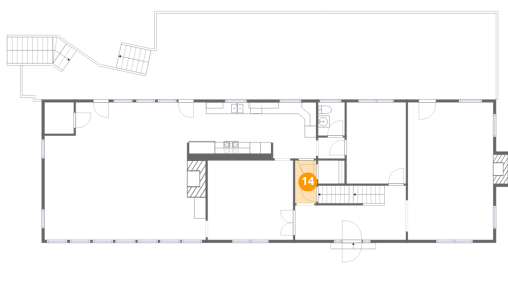
**13** Floor 2 - Living Room



Dimensions: 14'10" x 23'10"  
Area: 353 sq. ft  
Counted as living area: Yes

Heated: Yes  
Finished: Yes  
Enclosed: Yes  
Contiguous: Yes  
Permitted: Yes  
Wet space: No  
Addition: No  
Conversion: No

**14** Floor 2 - Hall

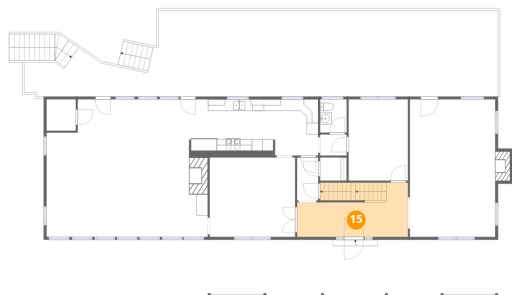


Dimensions: 3'8" x 7'5"  
Area: 27 sq. ft  
Counted as living area: Yes

Heated: Yes  
Finished: Yes  
Enclosed: Yes  
Contiguous: Yes  
Permitted: Yes  
Wet space: No  
Addition: No  
Conversion: No

2438 Robin Hood Road Southeast, South Roanoke, Roanoke,  
Roanoke city, Virginia, United States, 24014

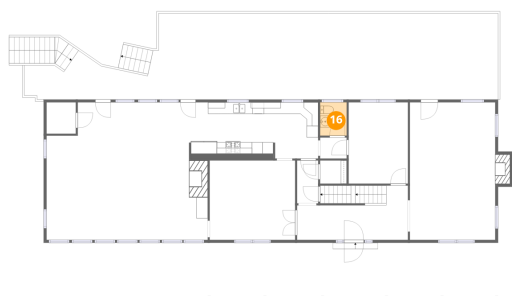
**15** Floor 2 - Foyer



Dimensions: 19'3" x 9'5"  
Area: 181 sq. ft  
Counted as living area: Yes

Heated: Yes  
Finished: Yes  
Enclosed: Yes  
Contiguous: Yes  
Permitted: Yes  
Wet space: No  
Addition: No  
Conversion: No

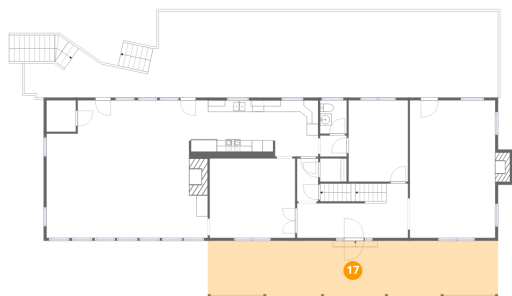
**16** Floor 2 - Bath



Dimensions: 4'7" x 5'9"  
Area: 27 sq. ft  
Counted as living area: Yes

Heated: Yes  
Finished: Yes  
Enclosed: Yes  
Contiguous: Yes  
Permitted: Yes  
Wet space: Yes  
Addition: No  
Conversion: No

**17** Floor 2 - Porch



Dimensions: 50'5" x 9'9"  
Area: 492 sq. ft  
Counted as living area: No

Heated: No  
Finished: No  
Enclosed: No  
Contiguous: Yes  
Permitted: Yes  
Wet space: No  
Addition: No  
Conversion: No

2438 Robin Hood Road Southeast, South Roanoke, Roanoke,  
Roanoke city, Virginia, United States, 24014

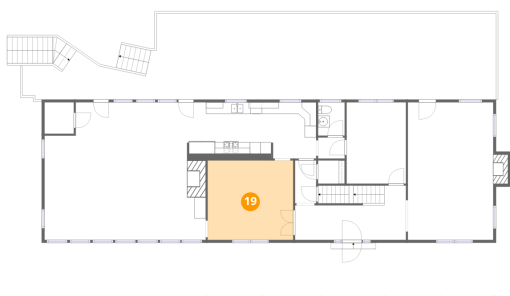
**18** Floor 2 - W.I.C.



Dimensions: 4'7" x 4'0"  
Area: 19 sq. ft  
Counted as living area: Yes

Heated: Yes  
Finished: Yes  
Enclosed: Yes  
Contiguous: Yes  
Permitted: Yes  
Wet space: No  
Addition: No  
Conversion: No

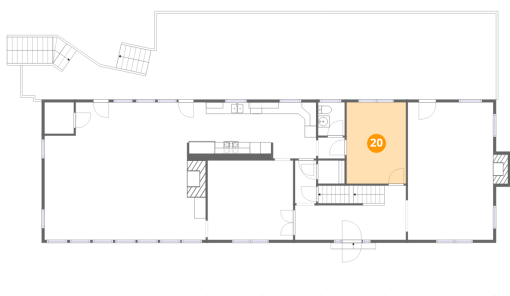
**19** Floor 2 - Dining Area



Dimensions: 14'10" x 13'9"  
Area: 204 sq. ft  
Counted as living area: Yes

Heated: Yes  
Finished: Yes  
Enclosed: Yes  
Contiguous: Yes  
Permitted: Yes  
Wet space: No  
Addition: No  
Conversion: No

**20** Floor 2 - Den

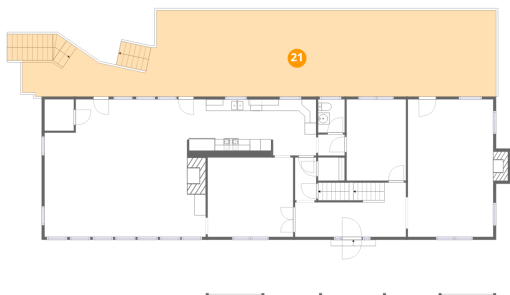


Dimensions: 10'4" x 14'1"  
Area: 145 sq. ft  
Counted as living area: Yes

Heated: Yes  
Finished: Yes  
Enclosed: Yes  
Contiguous: Yes  
Permitted: Yes  
Wet space: No  
Addition: No  
Conversion: No

# 2438 Robin Hood Road Southeast, South Roanoke, Roanoke, Roanoke city, Virginia, United States, 24014

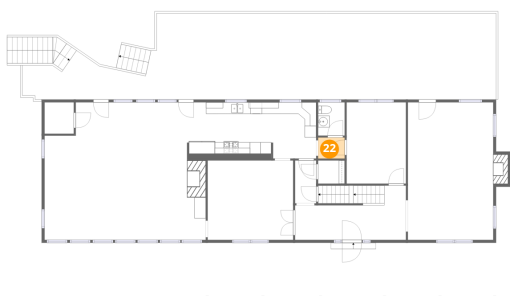
## 21 Floor 2 - Patio



Dimensions: 82'3" x 14'11"  
Area: 1230 sq. ft  
Counted as living area: No

Heated: No  
Finished: No  
Enclosed: No  
Contiguous: Yes  
Permitted: Yes  
Wet space: No  
Addition: No  
Conversion: No

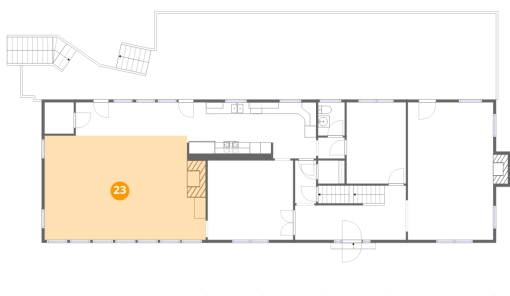
## 22 Floor 2 - Hall



Dimensions: 4'7" x 3'8"  
Area: 17 sq. ft  
Counted as living area: Yes

Heated: Yes  
Finished: Yes  
Enclosed: Yes  
Contiguous: Yes  
Permitted: Yes  
Wet space: No  
Addition: No  
Conversion: No

## 23 Floor 2 - Family Room

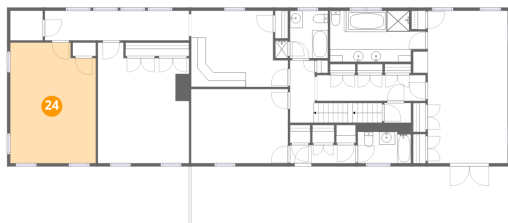


Dimensions: 27'11" x 18'1"  
Area: 505 sq. ft  
Counted as living area: Yes

Heated: Yes  
Finished: Yes  
Enclosed: Yes  
Contiguous: Yes  
Permitted: Yes  
Wet space: No  
Addition: No  
Conversion: No

# 2438 Robin Hood Road Southeast, South Roanoke, Roanoke, Roanoke city, Virginia, United States, 24014

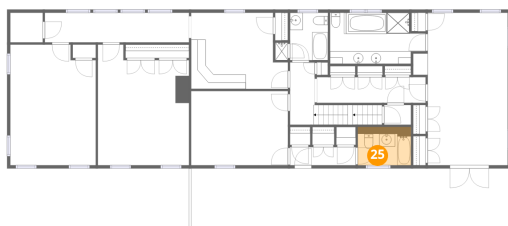
## 24 Floor 3 - Bedroom



Dimensions: 13'5" x 18'10"  
Area: 252 sq. ft  
Counted as living area: Yes

Heated: Yes  
Finished: Yes  
Enclosed: Yes  
Contiguous: Yes  
Permitted: Yes  
Wet space: No  
Addition: No  
Conversion: No

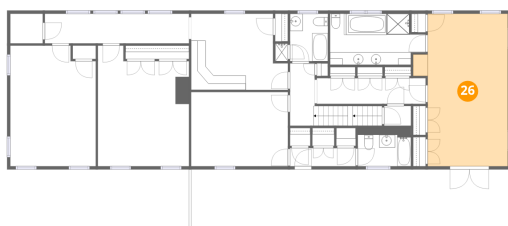
## 25 Floor 3 - Bath



Dimensions: 8'4" x 4'11"  
Area: 41 sq. ft  
Counted as living area: Yes

Heated: Yes  
Finished: Yes  
Enclosed: Yes  
Contiguous: Yes  
Permitted: Yes  
Wet space: Yes  
Addition: No  
Conversion: No

## 26 Floor 3 - Primary Bedroom

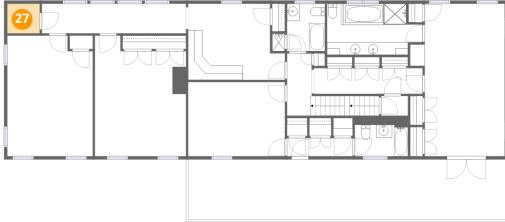


Dimensions: 14'10" x 23'10"  
Area: 353 sq. ft  
Counted as living area: Yes

Heated: Yes  
Finished: Yes  
Enclosed: Yes  
Contiguous: Yes  
Permitted: Yes  
Wet space: No  
Addition: No  
Conversion: No

2438 Robin Hood Road Southeast, South Roanoke, Roanoke,  
Roanoke city, Virginia, United States, 24014

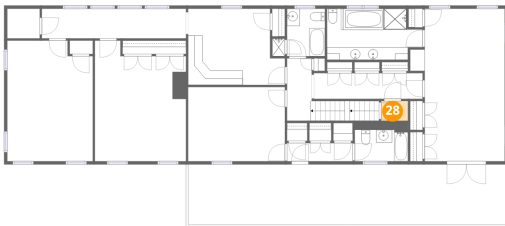
**27** Floor 3 - Elevator



Dimensions: 5'1" x 4'8"  
Area: 24 sq. ft  
Counted as living area: No

Heated: No  
Finished: No  
Enclosed: Yes  
Contiguous: No  
Permitted: Yes  
Wet space: No  
Addition: No  
Conversion: No

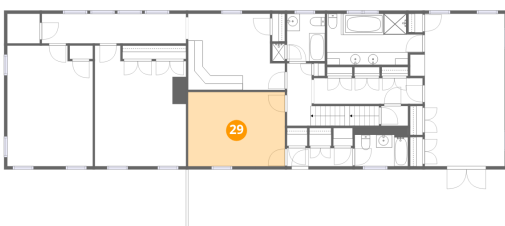
**28** Floor 3 - Hall



Dimensions: 4'2" x 3'1"  
Area: 13 sq. ft  
Counted as living area: Yes

Heated: Yes  
Finished: Yes  
Enclosed: Yes  
Contiguous: Yes  
Permitted: Yes  
Wet space: No  
Addition: No  
Conversion: No

**29** Floor 3 - Bedroom

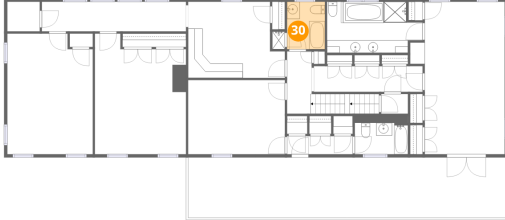


Dimensions: 15'2" x 11'7"  
Area: 176 sq. ft  
Counted as living area: Yes

Heated: Yes  
Finished: Yes  
Enclosed: Yes  
Contiguous: Yes  
Permitted: Yes  
Wet space: No  
Addition: No  
Conversion: No

2438 Robin Hood Road Southeast, South Roanoke, Roanoke,  
Roanoke city, Virginia, United States, 24014

**30** Floor 3 - Bath



Dimensions: 5'11" x 7'5"  
Area: 44 sq. ft  
Counted as living area: Yes

Heated: Yes  
Finished: Yes  
Enclosed: Yes  
Contiguous: Yes  
Permitted: Yes  
Wet space: Yes  
Addition: No  
Conversion: No

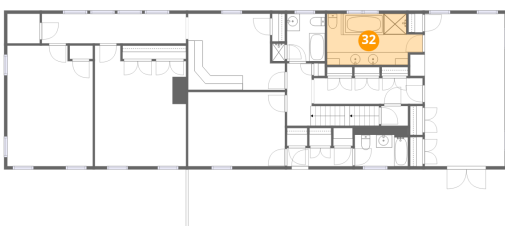
**31** Floor 3 - Hall



Dimensions: 17'0" x 4'0"  
Area: 68 sq. ft  
Counted as living area: Yes

Heated: Yes  
Finished: Yes  
Enclosed: Yes  
Contiguous: Yes  
Permitted: Yes  
Wet space: No  
Addition: No  
Conversion: No

**32** Floor 3 - Primary Bath



Dimensions: 14'11" x 8'0"  
Area: 120 sq. ft  
Counted as living area: Yes

Heated: Yes  
Finished: Yes  
Enclosed: Yes  
Contiguous: Yes  
Permitted: Yes  
Wet space: Yes  
Addition: No  
Conversion: No

2438 Robin Hood Road Southeast, South Roanoke, Roanoke,  
Roanoke city, Virginia, United States, 24014

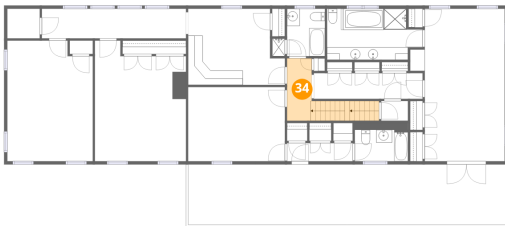
**33** Floor 3 - Bath



Dimensions: 2'0" x 2'9"  
Area: 6 sq. ft  
Counted as living area: Yes

Heated: Yes  
Finished: Yes  
Enclosed: Yes  
Contiguous: Yes  
Permitted: Yes  
Wet space: Yes  
Addition: No  
Conversion: No

**34** Floor 3 - Hall



Dimensions: 3'10" x 9'9"  
Area: 38 sq. ft  
Counted as living area: Yes

Heated: Yes  
Finished: Yes  
Enclosed: Yes  
Contiguous: Yes  
Permitted: Yes  
Wet space: No  
Addition: No  
Conversion: No

**35** Floor 3 - Office

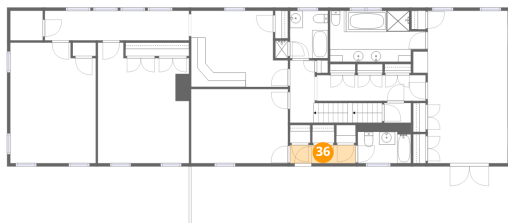


Dimensions: 15'2" x 11'11"  
Area: 181 sq. ft  
Counted as living area: Yes

Heated: Yes  
Finished: Yes  
Enclosed: Yes  
Contiguous: Yes  
Permitted: Yes  
Wet space: No  
Addition: No  
Conversion: No

2438 Robin Hood Road Southeast, South Roanoke, Roanoke,  
Roanoke city, Virginia, United States, 24014

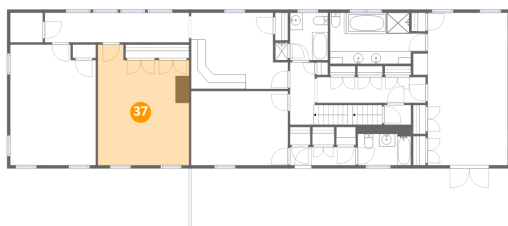
**36** Floor 3 - Hall



Dimensions: 10'3" x 2'10"  
Area: 29 sq. ft  
Counted as living area: Yes

Heated: Yes  
Finished: Yes  
Enclosed: Yes  
Contiguous: Yes  
Permitted: Yes  
Wet space: No  
Addition: No  
Conversion: No

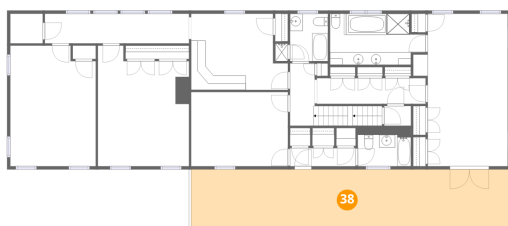
**37** Floor 3 - Bedroom



Dimensions: 14'3" x 18'10"  
Area: 269 sq. ft  
Counted as living area: Yes

Heated: Yes  
Finished: Yes  
Enclosed: Yes  
Contiguous: Yes  
Permitted: Yes  
Wet space: No  
Addition: No  
Conversion: No

**38** Floor 3 - Balcony

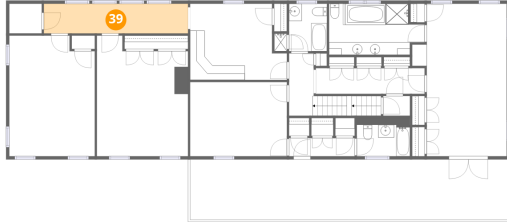


Dimensions: 49'9" x 9'5"  
Area: 469 sq. ft  
Counted as living area: No

Heated: No  
Finished: No  
Enclosed: No  
Contiguous: Yes  
Permitted: Yes  
Wet space: No  
Addition: No  
Conversion: No

2438 Robin Hood Road Southeast, South Roanoke, Roanoke,  
Roanoke city, Virginia, United States, 24014

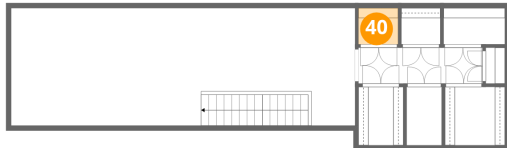
**39** Floor 3 - Hall



Dimensions: 22'7" x 4'8"  
Area: 105 sq. ft  
Counted as living area: Yes

Heated: Yes  
Finished: Yes  
Enclosed: Yes  
Contiguous: Yes  
Permitted: Yes  
Wet space: No  
Addition: No  
Conversion: No

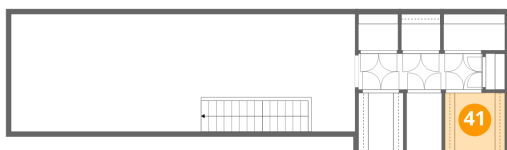
**40** Floor 4 - Cedar Cl



Dimensions: 4'0" x 3'7"  
Area: 14 sq. ft  
Counted as living area: Yes

Heated: Yes  
Finished: Yes  
Enclosed: Yes  
Contiguous: Yes  
Permitted: Yes  
Wet space: No  
Addition: No  
Conversion: No

**41** Floor 4 - Cedar W.I.C.

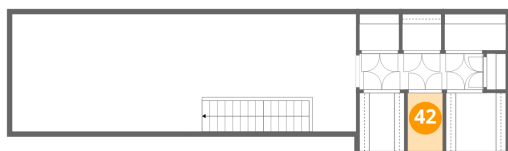


Dimensions: 6'0" x 5'10"  
Area: 35 sq. ft  
Counted as living area: Yes

Heated: Yes  
Finished: Yes  
Enclosed: Yes  
Contiguous: Yes  
Permitted: Yes  
Wet space: No  
Addition: No  
Conversion: No

2438 Robin Hood Road Southeast, South Roanoke, Roanoke, Roanoke city, Virginia, United States, 24014

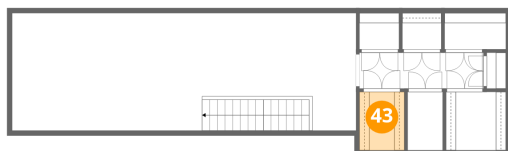
42 Floor 4 - Cedar W.I.C.



Dimensions: 3'6" x 5'10"  
Area: 20 sq. ft  
Counted as living area: Yes

Heated: Yes  
Finished: Yes  
Enclosed: Yes  
Contiguous: Yes  
Permitted: Yes  
Wet space: No  
Addition: No  
Conversion: No

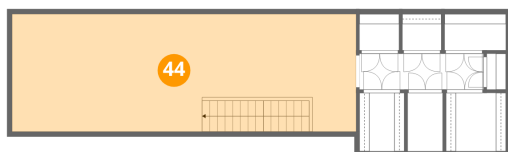
43 Floor 4 - Cedar W.I.C.



Dimensions: 4'6" x 5'10"  
Area: 26 sq. ft  
Counted as living area: Yes

Heated: Yes  
Finished: Yes  
Enclosed: Yes  
Contiguous: Yes  
Permitted: Yes  
Wet space: No  
Addition: No  
Conversion: No

44 Floor 4 - Finished Attic

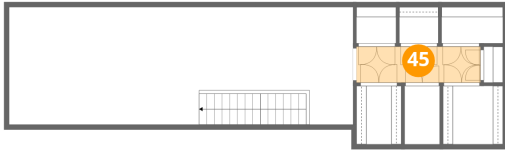


Dimensions: 34'5" x 11'9"  
Area: 404 sq. ft  
Counted as living area: Yes

Heated: Yes  
Finished: Yes  
Enclosed: Yes  
Contiguous: Yes  
Permitted: Yes  
Wet space: No  
Addition: No  
Conversion: No

2438 Robin Hood Road Southeast, South Roanoke, Roanoke,  
Roanoke city, Virginia, United States, 24014

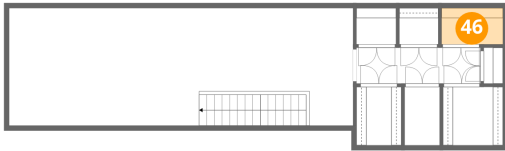
**45** Floor 4 - Hall



Dimensions: 12'5" x 3'7"  
Area: 44 sq. ft  
Counted as living area: Yes

Heated: Yes  
Finished: Yes  
Enclosed: Yes  
Contiguous: Yes  
Permitted: Yes  
Wet space: No  
Addition: No  
Conversion: No

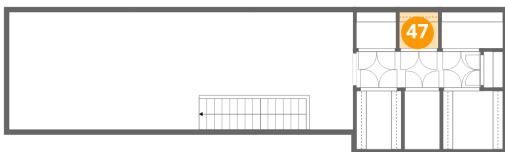
**46** Floor 4 - Cedar Cl



Dimensions: 6'2" x 3'7"  
Area: 22 sq. ft  
Counted as living area: Yes

Heated: Yes  
Finished: Yes  
Enclosed: Yes  
Contiguous: Yes  
Permitted: Yes  
Wet space: No  
Addition: No  
Conversion: No

**47** Floor 4 - Cedar Cl



Dimensions: 3'11" x 3'7"  
Area: 14 sq. ft  
Counted as living area: Yes

Heated: Yes  
Finished: Yes  
Enclosed: Yes  
Contiguous: Yes  
Permitted: Yes  
Wet space: No  
Addition: No  
Conversion: No