

Home data report

712 Baronne St,Lebanon,IN,US



Total Area: 1384 sq. ft
Basement 1: 243 sq. ft, 1st Floor: 1141 sq. ft
Excluded: Storage 206 sq. ft, Room 69 sq. ft, Basement 286 sq. ft, Utility 53 sq. ft, Walls: 138 sq. ft

Property summary

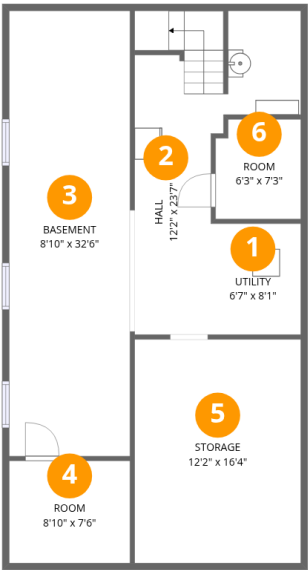
 **2** Floors

 **3** Bedrooms

 **2** Bathrooms

Home data report

712 Baronne St,Lebanon,IN,US



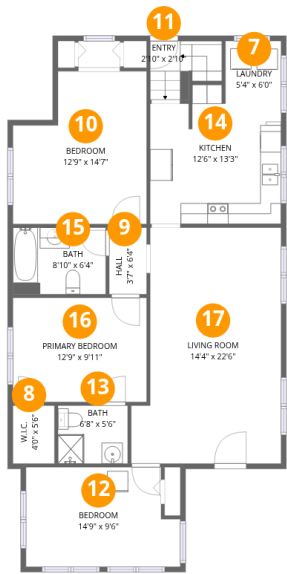
Room dimensions

Floor 1 Below grade Total:243sqft Excluded: 614sqft

#		Dimensions	sqft	Counted as living area
1	Utility	6'7" x 8'1"	53 sq. ft	No
2	Hall	12'2" x 23'7"	286 sq. ft	Yes
3	Basement	8'10" x 32'6"	286 sq. ft	No
4	Room	8'10" x 7'6"	66 sq. ft	No
5	Storage	12'2" x 16'4"	198 sq. ft	No
6	Room	6'3" x 7'3"	45 sq. ft	Yes

Home data report

712 Baronne St,Lebanon,IN,US

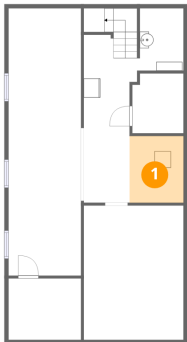


Room dimensions

Floor 2 Total:1141sqft Excluded: 0sqft

#		Dimensions	sqft	Counted as living area
7	Laundry	5'4" x 6'0"	32 sq. ft	Yes
8	W.I.C.	4'0" x 5'6"	22 sq. ft	Yes
9	Hall	3'7" x 6'4"	23 sq. ft	Yes
10	Bedroom	12'9" x 14'7"	186 sq. ft	Yes
11	Entry	2'10" x 2'10"	8 sq. ft	Yes
12	Bedroom	14'9" x 9'6"	140 sq. ft	Yes
13	Bath	6'8" x 5'6"	37 sq. ft	Yes
14	Kitchen	12'6" x 13'3"	166 sq. ft	Yes
15	Bath	8'10" x 6'4"	56 sq. ft	Yes
16	Primary Bedroom	12'9" x 9'11"	127 sq. ft	Yes
17	Living Room	14'4" x 22'6"	322 sq. ft	Yes

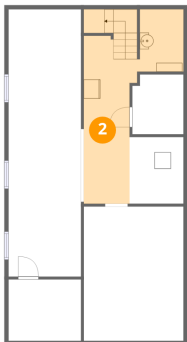
1 Floor 1 - Utility



Dimensions: 6'7" x 8'1"
Area: 53 sq. ft
Counted as living area: No

Heated: Yes
Finished: No
Enclosed: Yes
Contiguous: Yes
Permitted: Yes
Wet space: No
Addition: No
Conversion: No

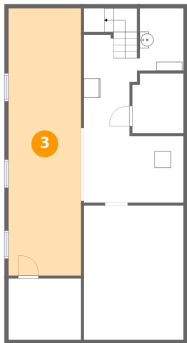
2 Floor 1 - Hall



Dimensions: 12'2" x 23'7"
Area: 286 sq. ft
Counted as living area: No

Heated: Yes
Finished: Yes
Enclosed: Yes
Contiguous: No
Permitted: Yes
Wet space: No
Addition: No
Conversion: No

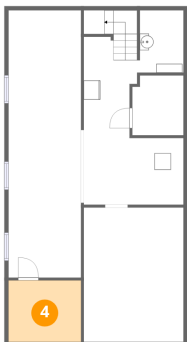
3 Floor 1 - Basement



Dimensions: 8'10" x 32'6"
Area: 286 sq. ft
Counted as living area: No

Heated: Yes
Finished: No
Enclosed: Yes
Contiguous: Yes
Permitted: Yes
Wet space: No
Addition: No
Conversion: No

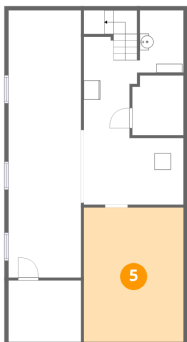
4 Floor 1 - Room



Dimensions: 8'10" x 7'6"
Area: 66 sq. ft
Counted as living area: No

Heated: Yes
Finished: No
Enclosed: Yes
Contiguous: Yes
Permitted: Yes
Wet space: No
Addition: No
Conversion: No

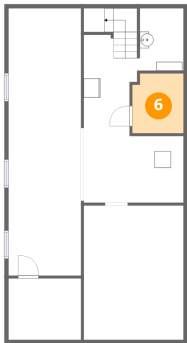
5 Floor 1 - Storage



Dimensions: 12'2" x 16'4"
Area: 198 sq. ft
Counted as living area: No

Heated: No
Finished: No
Enclosed: No
Contiguous: Yes
Permitted: Yes
Wet space: No
Addition: No
Conversion: No

6 Floor 1 - Room



Dimensions: 6'3" x 7'3"
Area: 45 sq. ft
Counted as living area: No

Heated: Yes
Finished: Yes
Enclosed: Yes
Contiguous: No
Permitted: Yes
Wet space: No
Addition: No
Conversion: No

7 Floor 2 - Laundry



Dimensions: 5'4" x 6'0"
Area: 32 sq. ft
Counted as living area: Yes

Heated: Yes
Finished: Yes
Enclosed: Yes
Contiguous: Yes
Permitted: Yes
Wet space: No
Addition: No
Conversion: No

8 Floor 2 - W.I.C.



Dimensions: 4'0" x 5'6"
Area: 22 sq. ft
Counted as living area: Yes

Heated: Yes
Finished: Yes
Enclosed: Yes
Contiguous: Yes
Permitted: Yes
Wet space: No
Addition: No
Conversion: No

9 Floor 2 - Hall



Dimensions: 3'7" x 6'4"
Area: 23 sq. ft
Counted as living area: Yes

Heated: Yes
Finished: Yes
Enclosed: Yes
Contiguous: Yes
Permitted: Yes
Wet space: No
Addition: No
Conversion: No

10 Floor 2 - Bedroom



Dimensions: 12'9" x 14'7"
Area: 186 sq. ft
Counted as living area: Yes

Heated: Yes
Finished: Yes
Enclosed: Yes
Contiguous: Yes
Permitted: Yes
Wet space: No
Addition: No
Conversion: No

11 Floor 2 - Entry



Dimensions: 2'10" x 2'10"
Area: 8 sq. ft
Counted as living area: Yes

Heated: Yes
Finished: Yes
Enclosed: Yes
Contiguous: Yes
Permitted: Yes
Wet space: No
Addition: No
Conversion: No

12 Floor 2 - Bedroom



Dimensions: 14'9" x 9'6"
Area: 140 sq. ft
Counted as living area: Yes

Heated: Yes
Finished: Yes
Enclosed: Yes
Contiguous: Yes
Permitted: Yes
Wet space: No
Addition: No
Conversion: No

13 Floor 2 - Bath



Dimensions: 6'8" x 5'6"
Area: 37 sq. ft
Counted as living area: Yes

Heated: Yes
Finished: Yes
Enclosed: Yes
Contiguous: Yes
Permitted: Yes
Wet space: Yes
Addition: No
Conversion: No

14 Floor 2 - Kitchen



Dimensions: 12'6" x 13'3"
Area: 166 sq. ft
Counted as living area: Yes

Heated: Yes
Finished: Yes
Enclosed: Yes
Contiguous: Yes
Permitted: Yes
Wet space: No
Addition: No
Conversion: No

15 Floor 2 - Bath



Dimensions: 8'10" x 6'4"
Area: 56 sq. ft
Counted as living area: Yes

Heated: Yes
Finished: Yes
Enclosed: Yes
Contiguous: Yes
Permitted: Yes
Wet space: Yes
Addition: No
Conversion: No

16 Floor 2 - Primary Bedroom



Dimensions: 12'9" x 9'11"
Area: 127 sq. ft
Counted as living area: Yes

Heated: Yes
Finished: Yes
Enclosed: Yes
Contiguous: Yes
Permitted: Yes
Wet space: No
Addition: No
Conversion: No

17 Floor 2 - Living Room



Dimensions: 14'4" x 22'6"
Area: 322 sq. ft
Counted as living area: Yes

Heated: Yes
Finished: Yes
Enclosed: Yes
Contiguous: Yes
Permitted: Yes
Wet space: No
Addition: No
Conversion: No