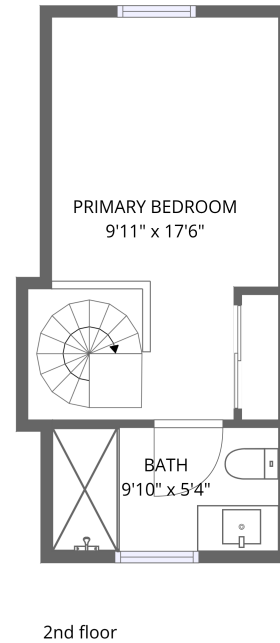
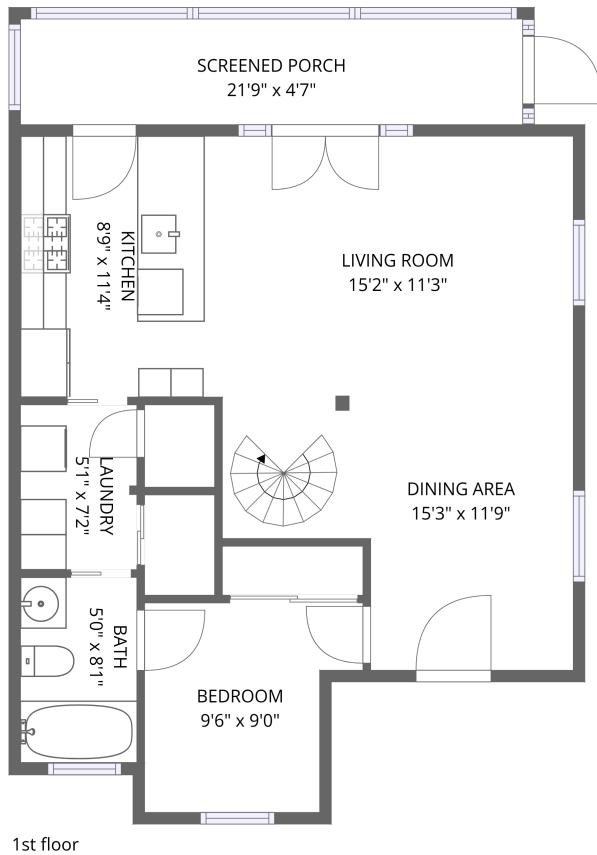


Home data report

# 46 St Francis St, St. Augustine, FL, US



**Total Area: 857 sq. ft**

1st Floor: 623 sq. ft, 2nd Floor: 234 sq. ft

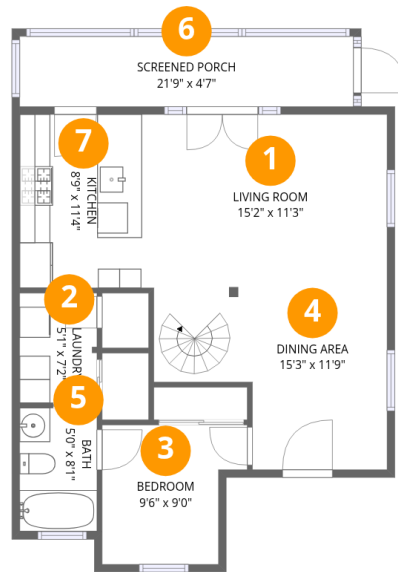
Excluded: Screened porch 100 sq. ft, Walls: 105 sq. ft

## Property summary

 **2** Floors

 **2** Bedrooms

 **2** Bathrooms



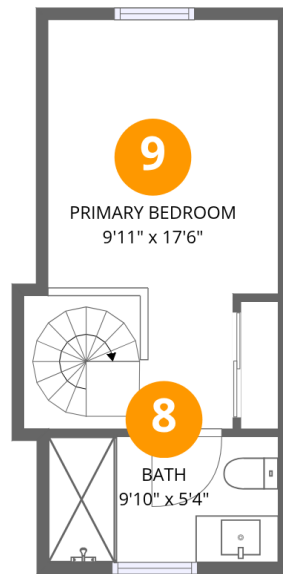
## Room dimensions

Floor 1

Total: 623 sqft

Excluded: 100 sqft

#		Dimensions	sqft	Counted as living area
1	Living Room	15'2" x 11'3"	172 sq. ft	Yes
2	Laundry	5'1" x 7'2"	36 sq. ft	Yes
3	Bedroom	9'6" x 9'0"	74 sq. ft	Yes
4	Dining Area	15'3" x 11'9"	143 sq. ft	Yes
5	Bath	5'0" x 8'1"	41 sq. ft	Yes
6	Screened Porch	21'9" x 4'7"	100 sq. ft	No
7	Kitchen	8'9" x 11'4"	99 sq. ft	Yes



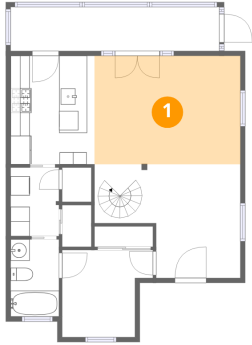
## Room dimensions

Floor 2

Total: 234 sqft Excluded: 0 sqft

#		Dimensions	sqft	Counted as living area
8	Bath	9'10" x 5'4"	53 sq. ft	Yes
9	Primary Bedroom	9'11" x 17'6"	166 sq. ft	Yes

## 1 Floor 1 - Living Room



Dimensions: 15'2" x 11'3"  
Area: 172 sq. ft  
Counted as living area: Yes

Heated: Yes  
Finished: Yes  
Enclosed: Yes  
Contiguous: Yes  
Permitted: Yes  
Wet space: No  
Addition: No  
Conversion: No

## 2 Floor 1 - Laundry



Dimensions: 5'1" x 7'2"  
Area: 36 sq. ft  
Counted as living area: Yes

Heated: Yes  
Finished: Yes  
Enclosed: Yes  
Contiguous: Yes  
Permitted: Yes  
Wet space: No  
Addition: No  
Conversion: No

### 3 Floor 1 - Bedroom



Dimensions: 9'6" x 9'0"  
Area: 74 sq. ft  
Counted as living area: Yes

Heated: Yes  
Finished: Yes  
Enclosed: Yes  
Contiguous: Yes  
Permitted: Yes  
Wet space: No  
Addition: No  
Conversion: No

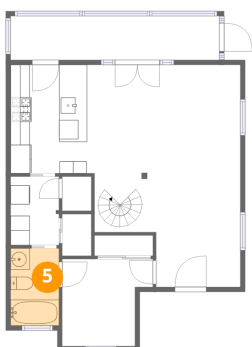
### 4 Floor 1 - Dining Area



Dimensions: 15'3" x 11'9"  
Area: 143 sq. ft  
Counted as living area: Yes

Heated: Yes  
Finished: Yes  
Enclosed: Yes  
Contiguous: Yes  
Permitted: Yes  
Wet space: No  
Addition: No  
Conversion: No

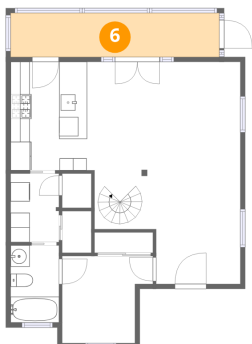
### 5 Floor 1 - Bath



Dimensions: 5'0" x 8'1"  
Area: 41 sq. ft  
Counted as living area: Yes

Heated: Yes  
Finished: Yes  
Enclosed: Yes  
Contiguous: Yes  
Permitted: Yes  
Wet space: Yes  
Addition: No  
Conversion: No

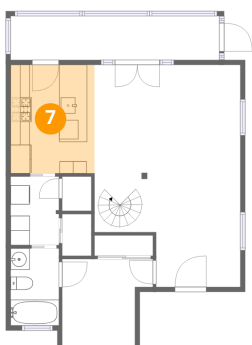
### 6 Floor 1 - Screened Porch



Dimensions: 21'9" x 4'7"  
Area: 100 sq. ft  
Counted as living area: No

Heated: No  
Finished: No  
Enclosed: No  
Contiguous: Yes  
Permitted: Yes  
Wet space: No  
Addition: No  
Conversion: No

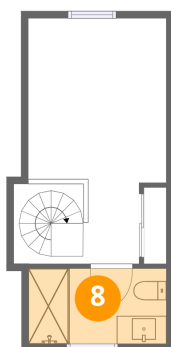
### 7 Floor 1 - Kitchen



Dimensions: 8'9" x 11'4"  
Area: 99 sq. ft  
Counted as living area: Yes

Heated: Yes  
Finished: Yes  
Enclosed: Yes  
Contiguous: Yes  
Permitted: Yes  
Wet space: No  
Addition: No  
Conversion: No

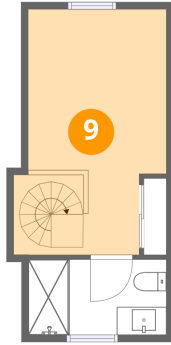
### 8 Floor 2 - Bath



Dimensions: 9'10" x 5'4"  
Area: 53 sq. ft  
Counted as living area: Yes

Heated: Yes  
Finished: Yes  
Enclosed: Yes  
Contiguous: Yes  
Permitted: Yes  
Wet space: Yes  
Addition: No  
Conversion: No

## 9 Floor 2 - Primary Bedroom



Dimensions: 9'11" x 17'6"  
Area: 166 sq. ft  
Counted as living area: Yes

Heated: Yes  
Finished: Yes  
Enclosed: Yes  
Contiguous: Yes  
Permitted: Yes  
Wet space: No  
Addition: No  
Conversion: No