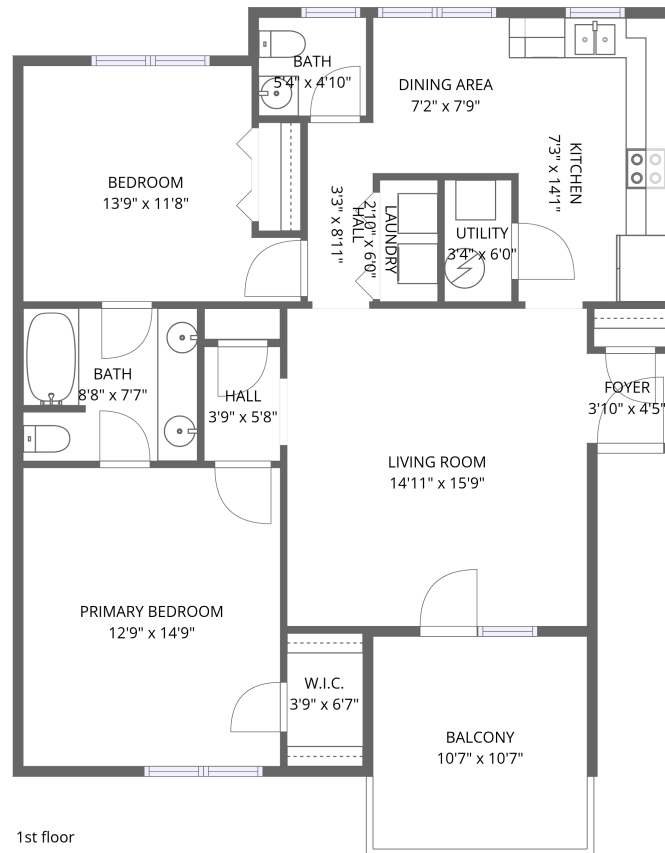


Home data report

1913 South Clearing Road, Salem, Virginia 24153, United States



Total Area: 1017 sq. ft

1st Floor: 1017 sq. ft

Excluded: Balcony 112 sq. ft, Walls: 74 sq. ft

Property summary



1 Floors



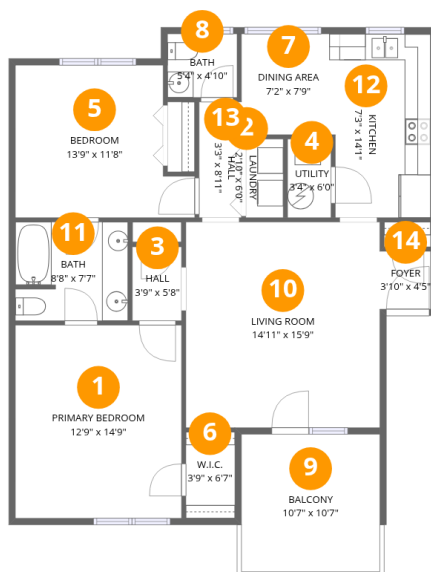
2 Bedrooms



1 Bathrooms



1 Half baths



Room dimensions

Floor 1

Total:1017sqft Excluded: 112sqft

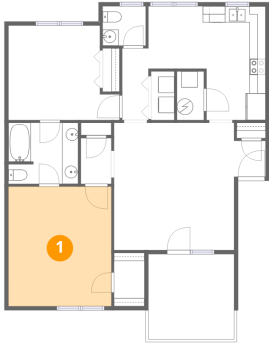
#		Dimensions	sqft	Counted as living area
1	Primary Bedroom	12'9" x 14'9"	189 sq. ft	Yes
2	Laundry	2'10" x 6'0"	17 sq. ft	Yes
3	Hall	3'9" x 5'8"	21 sq. ft	Yes
4	Utility	3'4" x 6'0"	20 sq. ft	Yes
5	Bedroom	13'9" x 11'8"	141 sq. ft	Yes
6	W.I.C.	3'9" x 6'7"	25 sq. ft	Yes
7	Dining Area	7'2" x 7'9"	56 sq. ft	Yes
8	Bath	5'4" x 4'10"	26 sq. ft	Yes
9	Balcony	10'7" x 10'7"	112 sq. ft	No
10	Living Room	14'11" x 15'9"	235 sq. ft	Yes
11	Bath	8'8" x 7'7"	64 sq. ft	Yes

Home data report

1913 South Clearing Road, Salem, Virginia 24153, United States

#		Dimensions	sqft	Counted as living area
12	Kitchen	7'3" x 14'1"	103 sq. ft	Yes
13	Hall	3'3" x 8'11"	29 sq. ft	Yes
14	Foyer	3'10" x 4'5"	17 sq. ft	Yes

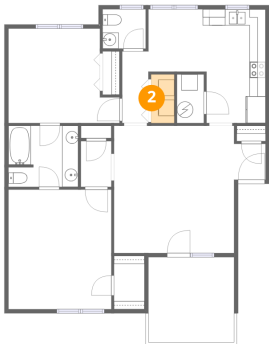
1 Floor 1 - Primary Bedroom



Dimensions: 12'9" x 14'9"
Area: 189 sq. ft
Counted as living area: Yes

Heated: Yes
Finished: Yes
Enclosed: Yes
Contiguous: Yes
Permitted: Yes
Wet space: No
Addition: No
Conversion: No

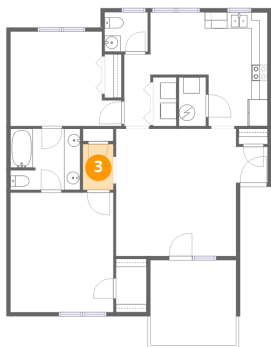
2 Floor 1 - Laundry



Dimensions: 2'10" x 6'0"
Area: 17 sq. ft
Counted as living area: Yes

Heated: Yes
Finished: Yes
Enclosed: Yes
Contiguous: Yes
Permitted: Yes
Wet space: No
Addition: No
Conversion: No

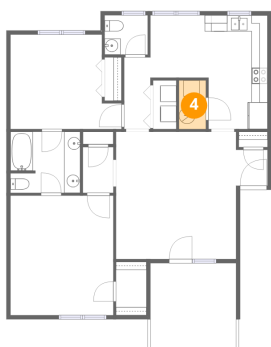
3 Floor 1 - Hall



Dimensions: 3'9" x 5'8"
Area: 21 sq. ft
Counted as living area: Yes

Heated: Yes
Finished: Yes
Enclosed: Yes
Contiguous: Yes
Permitted: Yes
Wet space: No
Addition: No
Conversion: No

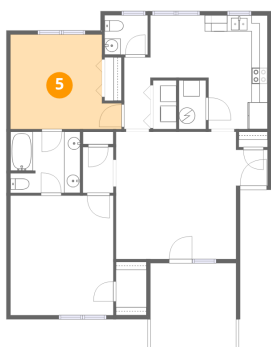
4 Floor 1 - Utility



Dimensions: 3'4" x 6'0"
Area: 20 sq. ft
Counted as living area: Yes

Heated: Yes
Finished: Yes
Enclosed: Yes
Contiguous: Yes
Permitted: Yes
Wet space: No
Addition: No
Conversion: No

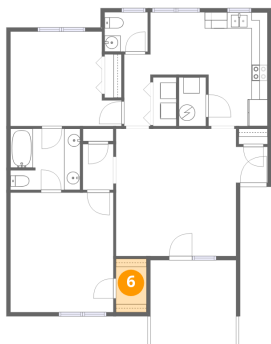
5 Floor 1 - Bedroom



Dimensions: 13'9" x 11'8"
Area: 141 sq. ft
Counted as living area: Yes

Heated: Yes
Finished: Yes
Enclosed: Yes
Contiguous: Yes
Permitted: Yes
Wet space: No
Addition: No
Conversion: No

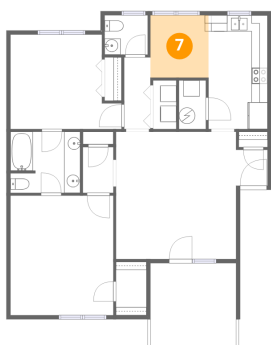
6 Floor 1 - W.I.C.



Dimensions: 3'9" x 6'7"
Area: 25 sq. ft
Counted as living area: Yes

Heated: Yes
Finished: Yes
Enclosed: Yes
Contiguous: Yes
Permitted: Yes
Wet space: No
Addition: No
Conversion: No

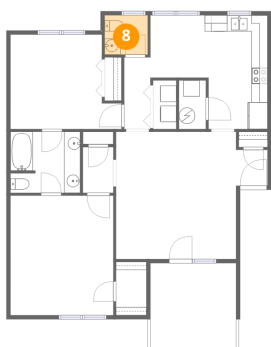
7 Floor 1 - Dining Area



Dimensions: 7'2" x 7'9"
Area: 56 sq. ft
Counted as living area: Yes

Heated: Yes
Finished: Yes
Enclosed: Yes
Contiguous: Yes
Permitted: Yes
Wet space: No
Addition: No
Conversion: No

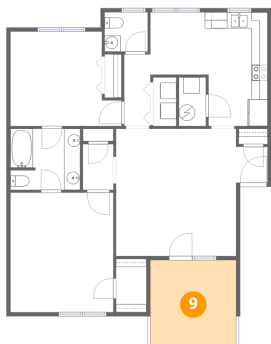
8 Floor 1 - Bath



Dimensions: 5'4" x 4'10"
Area: 26 sq. ft
Counted as living area: Yes

Heated: Yes
Finished: Yes
Enclosed: Yes
Contiguous: Yes
Permitted: Yes
Wet space: Yes
Addition: No
Conversion: No

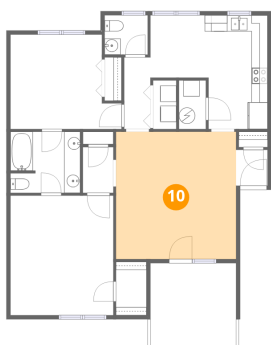
9 Floor 1 - Balcony



Dimensions: 10'7" x 10'7"
Area: 112 sq. ft
Counted as living area: No

Heated: No
Finished: No
Enclosed: No
Contiguous: Yes
Permitted: Yes
Wet space: No
Addition: No
Conversion: No

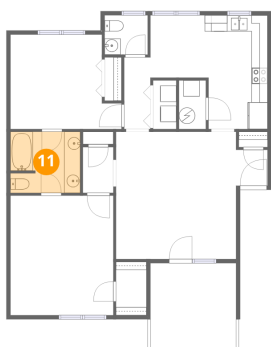
10 Floor 1 - Living Room



Dimensions: 14'11" x 15'9"
Area: 235 sq. ft
Counted as living area: Yes

Heated: Yes
Finished: Yes
Enclosed: Yes
Contiguous: Yes
Permitted: Yes
Wet space: No
Addition: No
Conversion: No

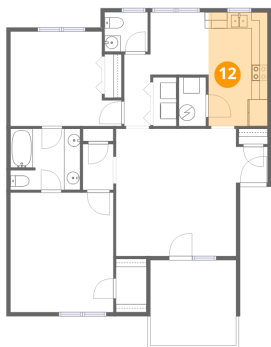
11 Floor 1 - Bath



Dimensions: 8'8" x 7'7"
Area: 64 sq. ft
Counted as living area: Yes

Heated: Yes
Finished: Yes
Enclosed: Yes
Contiguous: Yes
Permitted: Yes
Wet space: Yes
Addition: No
Conversion: No

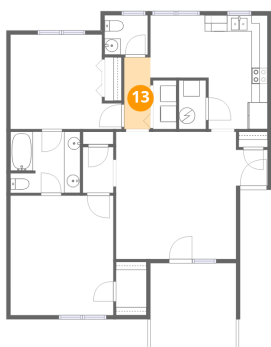
12 Floor 1 - Kitchen



Dimensions: 7'3" x 14'1"
Area: 103 sq. ft
Counted as living area: Yes

Heated: Yes
Finished: Yes
Enclosed: Yes
Contiguous: Yes
Permitted: Yes
Wet space: No
Addition: No
Conversion: No

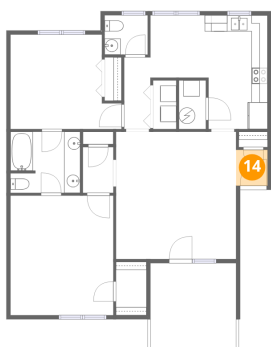
13 Floor 1 - Hall



Dimensions: 3'3" x 8'11"
Area: 29 sq. ft
Counted as living area: Yes

Heated: Yes
Finished: Yes
Enclosed: Yes
Contiguous: Yes
Permitted: Yes
Wet space: No
Addition: No
Conversion: No

14 Floor 1 - Foyer



Dimensions: 3'10" x 4'5"
Area: 17 sq. ft
Counted as living area: Yes

Heated: Yes
Finished: Yes
Enclosed: Yes
Contiguous: Yes
Permitted: Yes
Wet space: No
Addition: No
Conversion: No