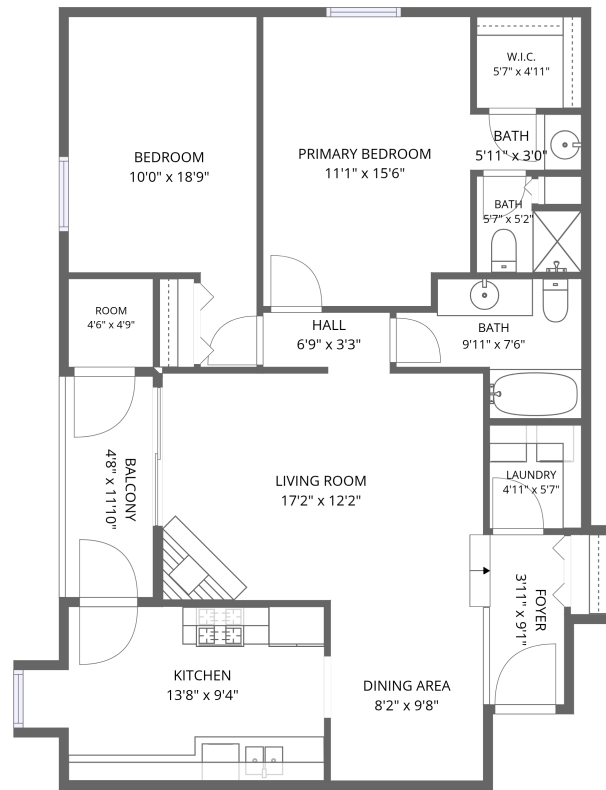


Home data report

525 Cumnor Rd, 204, Westmont, IL, US, 204



1st floor


Total Area: 1036 sq. ft

1st Floor: 1036 sq. ft

Excluded: Balcony 55 sq. ft, Embedded window 10 sq. ft, Walls: 0 sq. ft

Property summary

 **1** Floors

 **2** Bedrooms

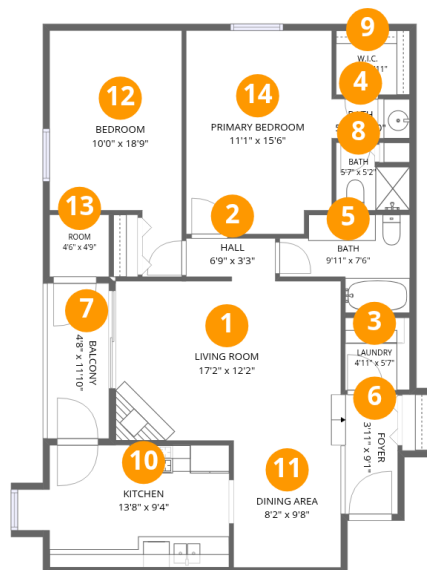
 **2** Bathrooms

Scan captured on Wed, 20 May 2026 19:43:52 GMT

All dimensions are approximate. This plan is for Marketing Purposes only.

Home data report

525 Cumnor Rd,204,Westmont,IL,US, 204



Room dimensions

Floor 1

Total:1036sqft Excluded: 65sqft

#		Dimensions	sqft	Counted as living area
1	Living Room	17'2" x 12'2"	208 sq. ft	Yes
2	Hall	6'9" x 3'3"	21 sq. ft	Yes
3	Laundry	4'11" x 5'7"	27 sq. ft	Yes
4	Bath	5'11" x 3'0"	18 sq. ft	Yes
5	Bath	9'11" x 7'6"	56 sq. ft	Yes
6	Foyer	3'11" x 9'1"	39 sq. ft	Yes
7	Balcony	4'8" x 11'10"	55 sq. ft	No
8	Bath	5'7" x 5'2"	24 sq. ft	Yes
9	W.I.C.	5'7" x 4'11"	27 sq. ft	Yes
10	Kitchen	13'8" x 9'4"	127 sq. ft	Yes
11	Dining Area	8'2" x 9'8"	79 sq. ft	Yes

Scan captured on Wed, 20 May 2026 19:43:52 GMT

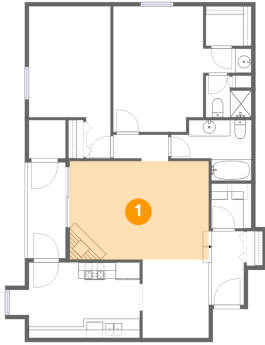
All dimensions are approximate. This plan is for Marketing Purposes only.

Home data report

525 Cumnor Rd,204,Westmont,IL,US, 204

#		Dimensions	sqft	Counted as living area
12	Bedroom	10'0" x 18'9"	153 sq. ft	Yes
13	Room	4'6" x 4'9"	21 sq. ft	Yes
14	Primary Bedroom	11'1" x 15'6"	168 sq. ft	Yes

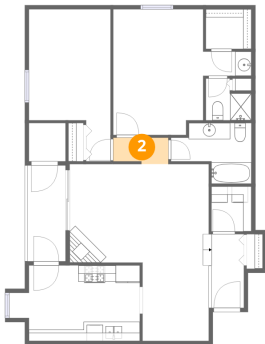
1 Floor 1 - Living Room



Dimensions: 17'2" x 12'2"
Area: 208 sq. ft
Counted as living area: Yes

Heated: Yes
Finished: Yes
Enclosed: Yes
Contiguous: Yes
Permitted: Yes
Wet space: No
Addition: No
Conversion: No

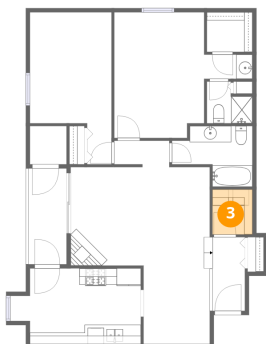
2 Floor 1 - Hall



Dimensions: 6'9" x 3'3"
Area: 21 sq. ft
Counted as living area: Yes

Heated: Yes
Finished: Yes
Enclosed: Yes
Contiguous: Yes
Permitted: Yes
Wet space: No
Addition: No
Conversion: No

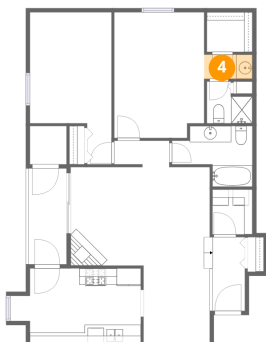
3 Floor 1 - Laundry



Dimensions: 4'11" x 5'7"
Area: 27 sq. ft
Counted as living area: Yes

Heated: Yes
Finished: Yes
Enclosed: Yes
Contiguous: Yes
Permitted: Yes
Wet space: No
Addition: No
Conversion: No

4 Floor 1 - Bath



Dimensions: 5'11" x 3'0"
Area: 18 sq. ft
Counted as living area: Yes

Heated: Yes
Finished: Yes
Enclosed: Yes
Contiguous: Yes
Permitted: Yes
Wet space: Yes
Addition: No
Conversion: No

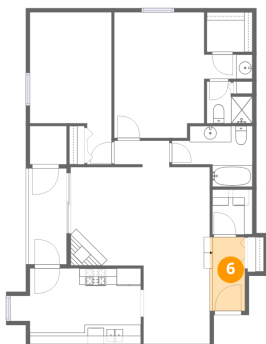
5 Floor 1 - Bath



Dimensions: 9'11" x 7'6"
Area: 56 sq. ft
Counted as living area: Yes

Heated: Yes
Finished: Yes
Enclosed: Yes
Contiguous: Yes
Permitted: Yes
Wet space: Yes
Addition: No
Conversion: No

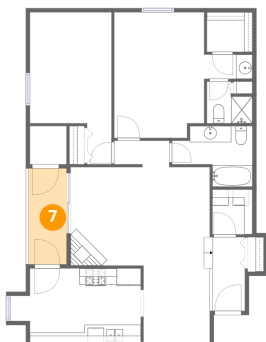
6 Floor 1 - Foyer



Dimensions: 3'11" x 9'1"
Area: 39 sq. ft
Counted as living area: Yes

Heated: Yes
Finished: Yes
Enclosed: Yes
Contiguous: Yes
Permitted: Yes
Wet space: No
Addition: No
Conversion: No

7 Floor 1 - Balcony



Dimensions: 4'8" x 11'10"
Area: 55 sq. ft
Counted as living area: No

Heated: No
Finished: No
Enclosed: No
Contiguous: Yes
Permitted: Yes
Wet space: No
Addition: No
Conversion: No

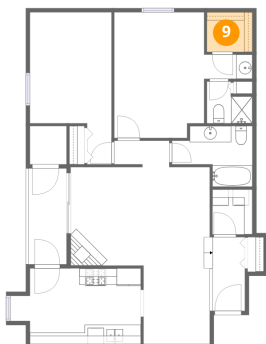
8 Floor 1 - Bath



Dimensions: 5'7" x 5'2"
Area: 24 sq. ft
Counted as living area: Yes

Heated: Yes
Finished: Yes
Enclosed: Yes
Contiguous: Yes
Permitted: Yes
Wet space: Yes
Addition: No
Conversion: No

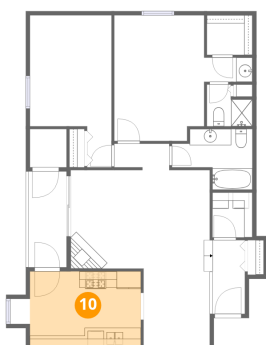
9 Floor 1 - W.I.C.



Dimensions: 5'7" x 4'11"
Area: 27 sq. ft
Counted as living area: Yes

Heated: Yes
Finished: Yes
Enclosed: Yes
Contiguous: Yes
Permitted: Yes
Wet space: No
Addition: No
Conversion: No

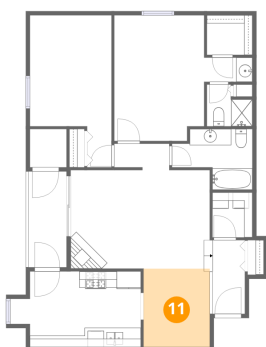
10 Floor 1 - Kitchen



Dimensions: 13'8" x 9'4"
Area: 127 sq. ft
Counted as living area: Yes

Heated: Yes
Finished: Yes
Enclosed: Yes
Contiguous: Yes
Permitted: Yes
Wet space: No
Addition: No
Conversion: No

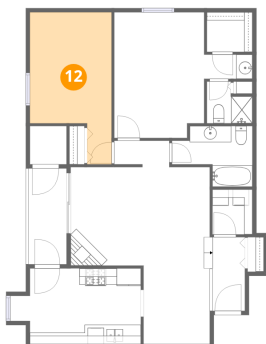
11 Floor 1 - Dining Area



Dimensions: 8'2" x 9'8"
Area: 79 sq. ft
Counted as living area: Yes

Heated: Yes
Finished: Yes
Enclosed: Yes
Contiguous: Yes
Permitted: Yes
Wet space: No
Addition: No
Conversion: No

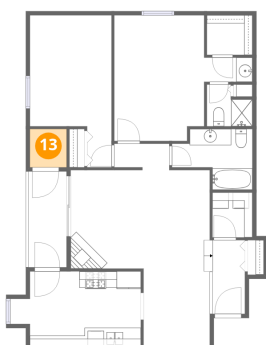
12 Floor 1 - Bedroom



Dimensions: 10'0" x 18'9"
Area: 153 sq. ft
Counted as living area: Yes

Heated: Yes
Finished: Yes
Enclosed: Yes
Contiguous: Yes
Permitted: Yes
Wet space: No
Addition: No
Conversion: No

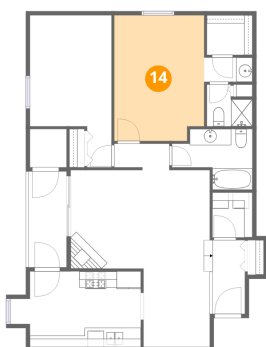
13 Floor 1 - Room



Dimensions: 4'6" x 4'9"
Area: 21 sq. ft
Counted as living area: Yes

Heated: Yes
Finished: Yes
Enclosed: Yes
Contiguous: Yes
Permitted: Yes
Wet space: No
Addition: No
Conversion: No

14 Floor 1 - Primary Bedroom



Dimensions: 11'1" x 15'6"
Area: 168 sq. ft
Counted as living area: Yes

Heated: Yes
Finished: Yes
Enclosed: Yes
Contiguous: Yes
Permitted: Yes
Wet space: No
Addition: No
Conversion: No