

Home report

1938 16th Avenue, Forest Grove, Washington County, Oregon,
United States, 97116, whole




Total Area: 3632 sq. ft

Below Ground: 0 sq. ft, Floor 2: 352 sq. ft, Floor 3: 1534 sq. ft, Floor 4: 753 sq. ft, Floor 5: 993 sq. ft

Excluded: Basement 503 sq. ft, Hall 26 sq. ft, Garage 419 sq. ft, Low ceiling 64 sq. ft, Walls: 394 sq. ft

Property summary

 **5** Floors

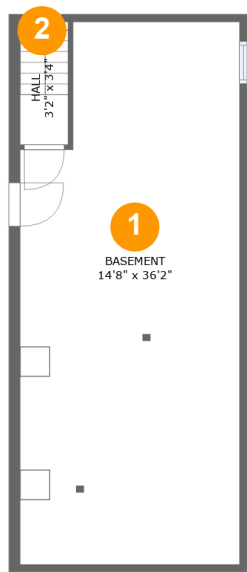
 **4** Bedrooms

 **4** Bathrooms

 **1** Garages

Home report

1938 16th Avenue, Forest Grove, Washington County, Oregon,
United States, 97116, whole



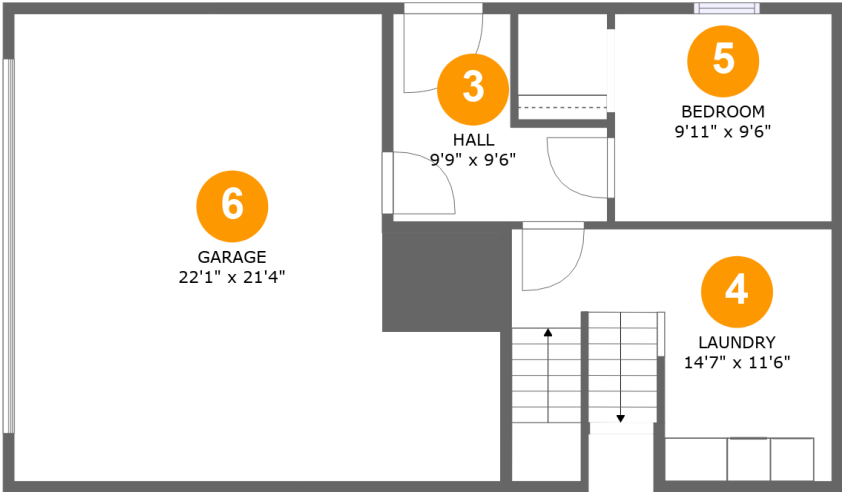
Room dimensions

Floor 1 Below ground Total:0sqft Excluded: 529sqft

#		Max Dimensions	sqft	Included
1	Basement	14'8" x 36'2"	500 sq. ft	No
2	Hall	3'2" x 3'4"	26 sq. ft	No

Home report

1938 16th Avenue, Forest Grove, Washington County, Oregon,
United States, 97116, whole



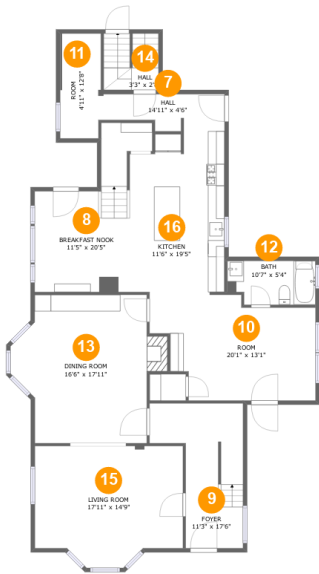
Room dimensions

Floor 2 Total:352sqft Excluded: 419sqft

#		Max Dimensions	sqft	Included
3	Hall	9'9" x 9'6"	70 sq. ft	Yes
4	Laundry	14'7" x 11'6"	155 sq. ft	Yes
5	Bedroom	9'11" x 9'6"	94 sq. ft	Yes
6	Garage	22'1" x 21'4"	419 sq. ft	No

Home report

1938 16th Avenue, Forest Grove, Washington County, Oregon,
United States, 97116, whole



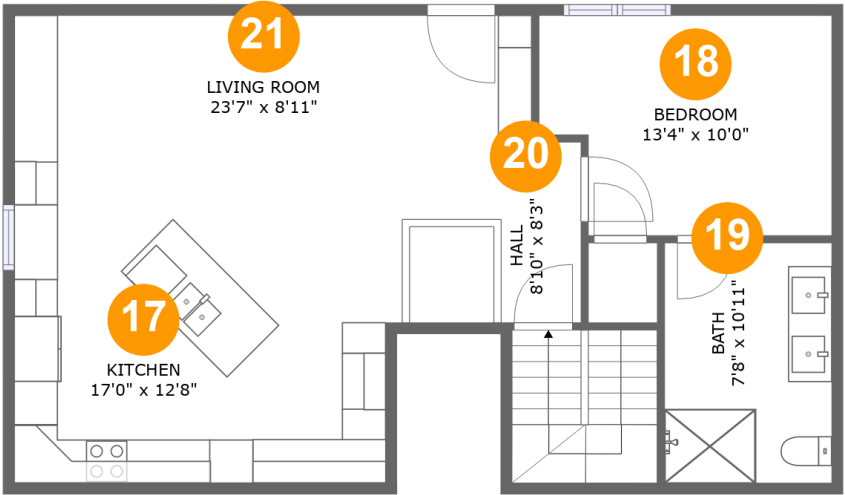
Room dimensions

Floor 3 Total:1534sqft Excluded: 0sqft

#		Max Dimensions	sqft	Included
7	Hall	14'11" x 4'6"	57 sq. ft	Yes
8	Breakfast Nook	11'5" x 20'5"	175 sq. ft	Yes
9	Foyer	11'3" x 17'6"	142 sq. ft	Yes
10	Room	20'1" x 13'1"	216 sq. ft	Yes
11	Room	4'11" x 12'8"	62 sq. ft	Yes
12	Bath	10'7" x 5'4"	53 sq. ft	Yes
13	Dining Room	16'6" x 17'11"	271 sq. ft	Yes
14	Hall	3'3" x 2'8"	44 sq. ft	Yes
15	Living Room	17'11" x 14'9"	237 sq. ft	Yes
16	Kitchen	11'6" x 19'5"	212 sq. ft	Yes

Home report

1938 16th Avenue, Forest Grove, Washington County, Oregon,
United States, 97116, whole



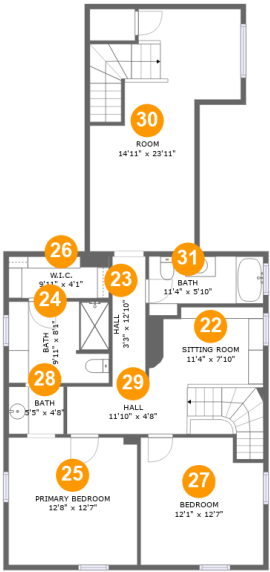
Room dimensions

Floor 4 Total:753sqft Excluded: 0sqft

#		Max Dimensions	sqft	Included
17	Kitchen	17'0" x 12'8"	215 sq. ft	Yes
18	Bedroom	13'4" x 10'0"	124 sq. ft	Yes
19	Bath	7'8" x 10'11"	84 sq. ft	Yes
20	Hall	8'10" x 8'3"	64 sq. ft	Yes
21	Living Room	23'7" x 8'11"	193 sq. ft	Yes

Home report

1938 16th Avenue, Forest Grove, Washington County, Oregon,
United States, 97116, whole



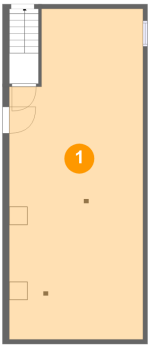
Room dimensions

Floor 5 Total:993sqft Excluded: 64sqft

#		Max Dimensions	sqft	Included
22	Sitting Room	11'4" x 7'10"	85 sq. ft	Yes
23	Hall	3'3" x 12'10"	42 sq. ft	Yes
24	Bath	9'11" x 8'1"	79 sq. ft	Yes
25	Primary Bedroom	12'8" x 12'7"	159 sq. ft	Yes
26	W.I.C.	9'11" x 4'1"	41 sq. ft	Yes
27	Bedroom	12'1" x 12'7"	145 sq. ft	Yes
28	Bath	5'5" x 4'8"	25 sq. ft	Yes
29	Hall	11'10" x 4'8"	97 sq. ft	Yes
30	Room	14'11" x 23'11"	204 sq. ft	Yes
31	Bath	11'4" x 5'10"	56 sq. ft	Yes

1938 16th Avenue, Forest Grove, Washington County, Oregon,
United States, 97116, whole

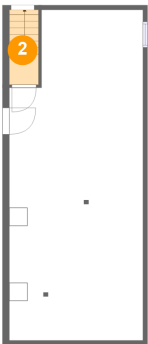
1 Floor 1 - Basement



Max Dimensions: 14'8" x 36'2"
Calculated Area: 500 sq. ft
Included: No

Heated: Yes
Finished: No
Enclosed: Yes
Contiguous: Yes
Permitted: Yes
Wet space: No
Addition: No
Conversion: No

2 Floor 1 - Hall



Max Dimensions: 3'2" x 3'4"
Calculated Area: 26 sq. ft
Included: No

Heated: Yes
Finished: No
Enclosed: Yes
Contiguous: Yes
Permitted: Yes
Wet space: No
Addition: No
Conversion: No

Home report

1938 16th Avenue, Forest Grove, Washington County, Oregon,
United States, 97116, whole

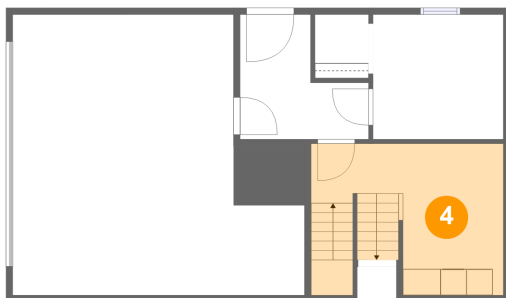
3 Floor 2 - Hall



Max Dimensions: 9'9" x 9'6"
Calculated Area: 70 sq. ft
Included: Yes

Heated: Yes
Finished: Yes
Enclosed: Yes
Contiguous: Yes
Permitted: Yes
Wet space: No
Addition: No
Conversion: No

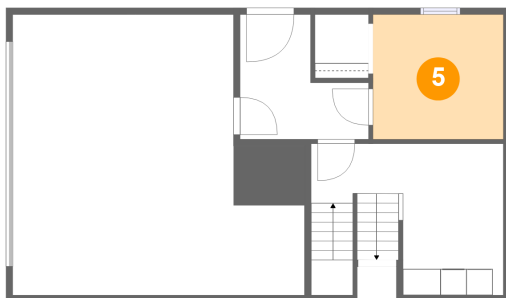
4 Floor 2 - Laundry



Max Dimensions: 14'7" x 11'6"
Calculated Area: 155 sq. ft
Included: Yes

Heated: Yes
Finished: Yes
Enclosed: Yes
Contiguous: Yes
Permitted: Yes
Wet space: No
Addition: No
Conversion: No

5 Floor 2 - Bedroom



Max Dimensions: 9'11" x 9'6"
Calculated Area: 94 sq. ft
Included: Yes

Heated: Yes
Finished: Yes
Enclosed: Yes
Contiguous: Yes
Permitted: Yes
Wet space: No
Addition: No
Conversion: No

1938 16th Avenue, Forest Grove, Washington County, Oregon,
United States, 97116, whole

6 Floor 2 - Garage



Max Dimensions: 22'1" x 21'4"
Calculated Area: 419 sq. ft
Included: No

Heated: No
Finished: No
Enclosed: Yes
Contiguous: Yes
Permitted: Yes
Wet space: No
Addition: No
Conversion: No

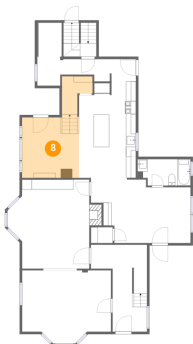
7 Floor 3 - Hall



Max Dimensions: 14'11" x 4'6"
Calculated Area: 57 sq. ft
Included: Yes

Heated: Yes
Finished: Yes
Enclosed: Yes
Contiguous: Yes
Permitted: Yes
Wet space: No
Addition: No
Conversion: No

8 Floor 3 - Breakfast Nook

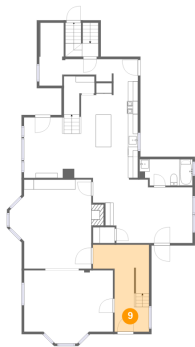


Max Dimensions: 11'5" x 20'5"
Calculated Area: 175 sq. ft
Included: Yes

Heated: Yes
Finished: Yes
Enclosed: Yes
Contiguous: Yes
Permitted: Yes
Wet space: No
Addition: No
Conversion: No

1938 16th Avenue, Forest Grove, Washington County, Oregon,
United States, 97116, whole

9 Floor 3 - Foyer



Max Dimensions: 11'3" x 17'6"
Calculated Area: 142 sq. ft
Included: Yes

Heated: Yes
Finished: Yes
Enclosed: Yes
Contiguous: Yes
Permitted: Yes
Wet space: No
Addition: No
Conversion: No

10 Floor 3 - Room



Max Dimensions: 20'1" x 13'1"
Calculated Area: 216 sq. ft
Included: Yes

Heated: Yes
Finished: Yes
Enclosed: Yes
Contiguous: Yes
Permitted: Yes
Wet space: No
Addition: No
Conversion: No

11 Floor 3 - Room



Max Dimensions: 4'11" x 12'8"
Calculated Area: 62 sq. ft
Included: Yes

Heated: Yes
Finished: Yes
Enclosed: Yes
Contiguous: Yes
Permitted: Yes
Wet space: No
Addition: No
Conversion: No

Home report

1938 16th Avenue, Forest Grove, Washington County, Oregon,
United States, 97116, whole

12 Floor 3 - Bath



Max Dimensions: 10'7" x 5'4"
Calculated Area: 53 sq. ft
Included: Yes

Heated: Yes
Finished: Yes
Enclosed: Yes
Contiguous: Yes
Permitted: Yes
Wet space: Yes
Addition: No
Conversion: No

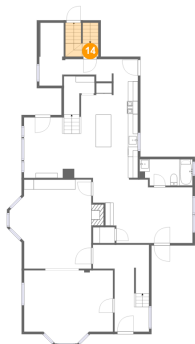
13 Floor 3 - Dining Room



Max Dimensions: 16'6" x 17'11"
Calculated Area: 271 sq. ft
Included: Yes

Heated: Yes
Finished: Yes
Enclosed: Yes
Contiguous: Yes
Permitted: Yes
Wet space: No
Addition: No
Conversion: No

14 Floor 3 - Hall

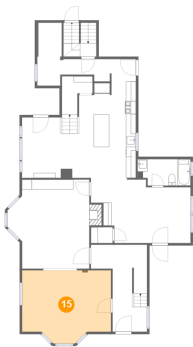


Max Dimensions: 3'3" x 2'8"
Calculated Area: 44 sq. ft
Included: Yes

Heated: Yes
Finished: Yes
Enclosed: Yes
Contiguous: Yes
Permitted: Yes
Wet space: No
Addition: No
Conversion: No

1938 16th Avenue, Forest Grove, Washington County, Oregon,
United States, 97116, whole

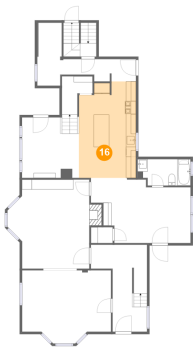
15 Floor 3 - Living Room



Max Dimensions: 17'11" x 14'9"
Calculated Area: 237 sq. ft
Included: Yes

Heated: Yes
Finished: Yes
Enclosed: Yes
Contiguous: Yes
Permitted: Yes
Wet space: No
Addition: No
Conversion: No

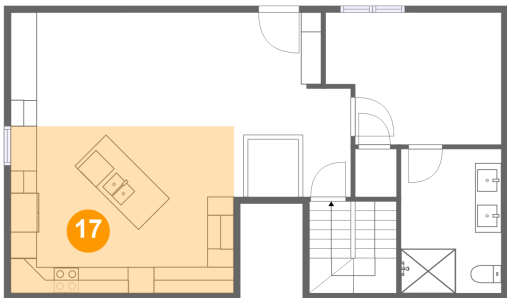
16 Floor 3 - Kitchen



Max Dimensions: 11'6" x 19'5"
Calculated Area: 212 sq. ft
Included: Yes

Heated: Yes
Finished: Yes
Enclosed: Yes
Contiguous: Yes
Permitted: Yes
Wet space: No
Addition: No
Conversion: No

17 Floor 4 - Kitchen



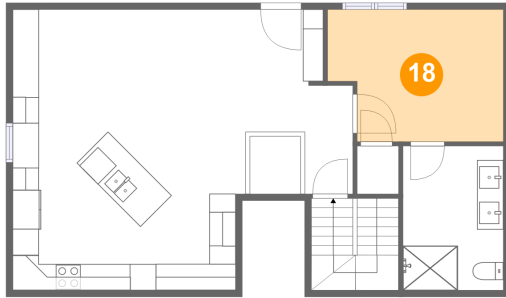
Max Dimensions: 17'0" x 12'8"
Calculated Area: 215 sq. ft
Included: Yes

Heated: Yes
Finished: Yes
Enclosed: Yes
Contiguous: Yes
Permitted: Yes
Wet space: No
Addition: No
Conversion: No

Home report

1938 16th Avenue, Forest Grove, Washington County, Oregon,
United States, 97116, whole

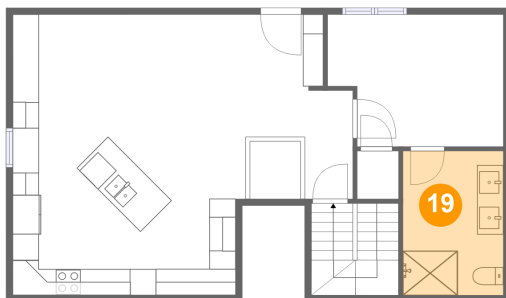
18 Floor 4 - Bedroom



Max Dimensions: 13'4" x 10'0"
Calculated Area: 124 sq. ft
Included: Yes

Heated: Yes
Finished: Yes
Enclosed: Yes
Contiguous: Yes
Permitted: Yes
Wet space: No
Addition: No
Conversion: No

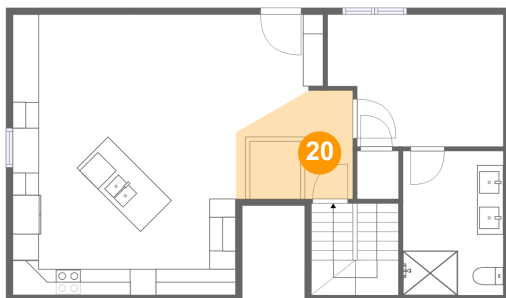
19 Floor 4 - Bath



Max Dimensions: 7'8" x 10'11"
Calculated Area: 84 sq. ft
Included: Yes

Heated: Yes
Finished: Yes
Enclosed: Yes
Contiguous: Yes
Permitted: Yes
Wet space: Yes
Addition: No
Conversion: No

20 Floor 4 - Hall

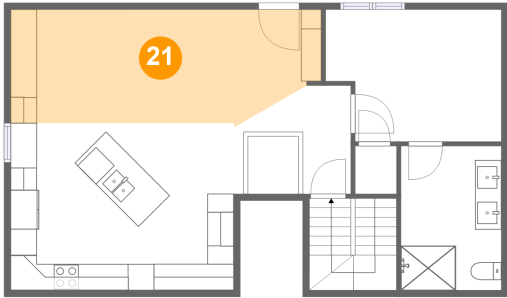


Max Dimensions: 8'10" x 8'3"
Calculated Area: 64 sq. ft
Included: Yes

Heated: Yes
Finished: Yes
Enclosed: Yes
Contiguous: Yes
Permitted: Yes
Wet space: No
Addition: No
Conversion: No

1938 16th Avenue, Forest Grove, Washington County, Oregon,
United States, 97116, whole

21 Floor 4 - Living Room



Max Dimensions: 23'7" x 8'11"
Calculated Area: 193 sq. ft
Included: Yes

Heated: Yes
Finished: Yes
Enclosed: Yes
Contiguous: Yes
Permitted: Yes
Wet space: No
Addition: No
Conversion: No

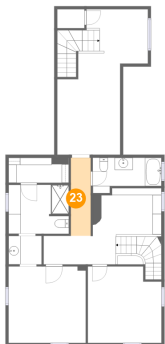
22 Floor 5 - Sitting Room



Max Dimensions: 11'4" x 7'10"
Calculated Area: 85 sq. ft
Included: Yes

Heated: Yes
Finished: Yes
Enclosed: Yes
Contiguous: Yes
Permitted: Yes
Wet space: No
Addition: No
Conversion: No

23 Floor 5 - Hall



Max Dimensions: 3'3" x 12'10"
Calculated Area: 42 sq. ft
Included: Yes

Heated: Yes
Finished: Yes
Enclosed: Yes
Contiguous: Yes
Permitted: Yes
Wet space: No
Addition: No
Conversion: No

Home report

1938 16th Avenue, Forest Grove, Washington County, Oregon,
United States, 97116, whole

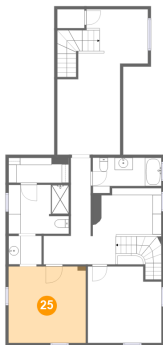
24 Floor 5 - Bath



Max Dimensions: 9'11" x 8'1"
Calculated Area: 79 sq. ft
Included: Yes

Heated: Yes
Finished: Yes
Enclosed: Yes
Contiguous: Yes
Permitted: Yes
Wet space: Yes
Addition: No
Conversion: No

25 Floor 5 - Primary Bedroom



Max Dimensions: 12'8" x 12'7"
Calculated Area: 159 sq. ft
Included: Yes

Heated: Yes
Finished: Yes
Enclosed: Yes
Contiguous: Yes
Permitted: Yes
Wet space: No
Addition: No
Conversion: No

26 Floor 5 - W.I.C.



Max Dimensions: 9'11" x 4'1"
Calculated Area: 41 sq. ft
Included: Yes

Heated: Yes
Finished: Yes
Enclosed: Yes
Contiguous: Yes
Permitted: Yes
Wet space: No
Addition: No
Conversion: No

Home report

1938 16th Avenue, Forest Grove, Washington County, Oregon,
United States, 97116, whole

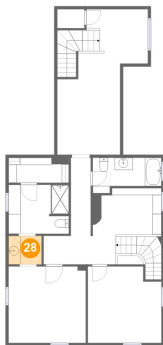
27 Floor 5 - Bedroom



Max Dimensions: 12'1" x 12'7"
Calculated Area: 145 sq. ft
Included: Yes

Heated: Yes
Finished: Yes
Enclosed: Yes
Contiguous: Yes
Permitted: Yes
Wet space: No
Addition: No
Conversion: No

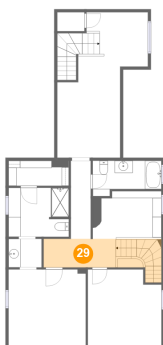
28 Floor 5 - Bath



Max Dimensions: 5'5" x 4'8"
Calculated Area: 25 sq. ft
Included: Yes

Heated: Yes
Finished: Yes
Enclosed: Yes
Contiguous: Yes
Permitted: Yes
Wet space: Yes
Addition: No
Conversion: No

29 Floor 5 - Hall



Max Dimensions: 11'10" x 4'8"
Calculated Area: 97 sq. ft
Included: Yes

Heated: Yes
Finished: Yes
Enclosed: Yes
Contiguous: Yes
Permitted: Yes
Wet space: No
Addition: No
Conversion: No

1938 16th Avenue, Forest Grove, Washington County, Oregon,
United States, 97116, whole

30 Floor 5 - Room



Max Dimensions: 14'11" x 23'11"
Calculated Area: 204 sq. ft
Included: Yes

Heated: Yes
Finished: Yes
Enclosed: Yes
Contiguous: Yes
Permitted: Yes
Wet space: No
Addition: No
Conversion: No

31 Floor 5 - Bath



Max Dimensions: 11'4" x 5'10"
Calculated Area: 56 sq. ft
Included: Yes

Heated: Yes
Finished: Yes
Enclosed: Yes
Contiguous: Yes
Permitted: Yes
Wet space: Yes
Addition: No
Conversion: No