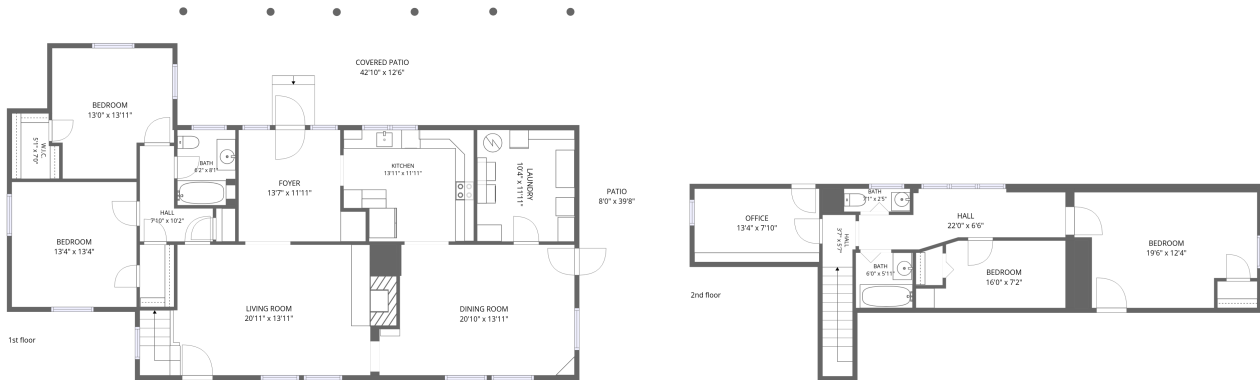


## Home data report

885 South Main Street, Rocky Mount, Franklin County, Virginia,  
United States, 24151



**Total Area: 2311 sq. ft**

1st Floor: 1591 sq. ft, 2nd Floor: 720 sq. ft

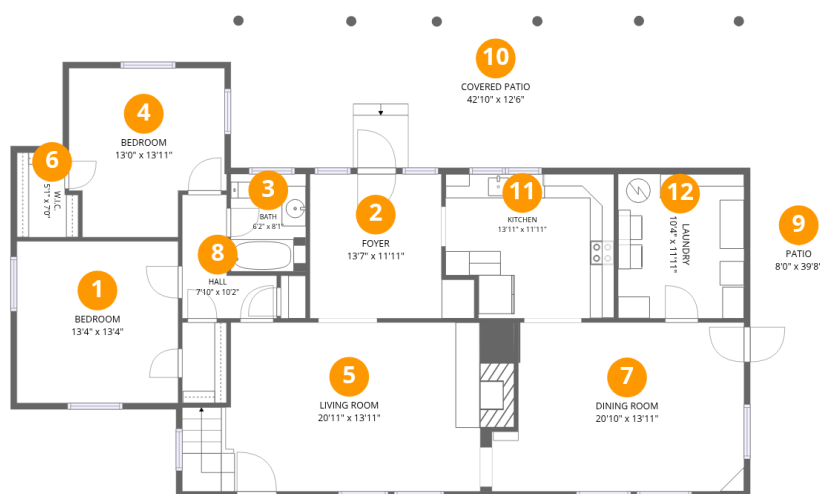
Excluded: Covered patio 536 sq. ft, Patio 318 sq. ft, Walls: 177 sq. ft

## Property summary



Home data report

885 South Main Street, Rocky Mount, Franklin County, Virginia,  
United States, 24151



## Room dimensions

Floor 1

Total:1591sqft Excluded: 854sqft

#		Dimensions	sqft	Counted as living area
1	Bedroom	13'4" x 13'4"	178 sq. ft	Yes
2	Foyer	13'7" x 11'11"	138 sq. ft	Yes
3	Bath	6'2" x 8'1"	50 sq. ft	Yes
4	Bedroom	13'0" x 13'11"	160 sq. ft	Yes
5	Living Room	20'11" x 13'11"	339 sq. ft	Yes
6	W.I.C.	5'1" x 7'0"	32 sq. ft	Yes
7	Dining Room	20'10" x 13'11"	270 sq. ft	Yes
8	Hall	7'10" x 10'2"	52 sq. ft	Yes
9	Patio	8'0" x 39'8"	318 sq. ft	No
10	Covered Patio	42'10" x 12'6"	536 sq. ft	No
11	Kitchen	13'11" x 11'11"	156 sq. ft	Yes

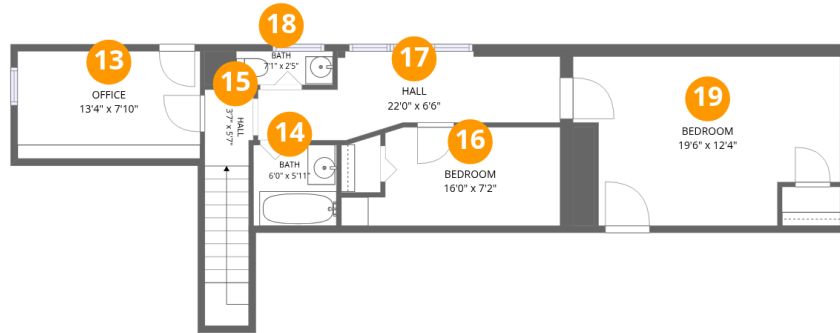
Home data report

**885 South Main Street, Rocky Mount, Franklin County, Virginia,  
United States, 24151**

#		Dimensions	sqft	Counted as living area
12	Laundry	10'4" x 11'11"	124 sq. ft	Yes

## Home data report

885 South Main Street, Rocky Mount, Franklin County, Virginia,  
United States, 24151



## Room dimensions

Floor 2

Total:720sqft

Excluded: 0sqft

#		Dimensions	sqft	Counted as living area
13	Office	13'4" x 7'10"	104 sq. ft	Yes
14	Bath	6'0" x 5'11"	36 sq. ft	Yes
15	Hall	3'7" x 5'7"	57 sq. ft	Yes
16	Bedroom	16'0" x 7'2"	98 sq. ft	Yes
17	Hall	22'0" x 6'6"	109 sq. ft	Yes
18	Bath	7'1" x 2'5"	17 sq. ft	Yes
19	Bedroom	19'6" x 12'4"	219 sq. ft	Yes

885 South Main Street, Rocky Mount, Franklin County, Virginia,  
United States, 24151

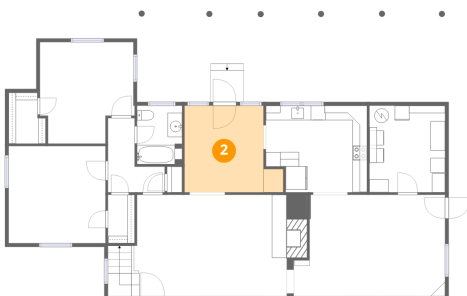
## 1 Floor 1 - Bedroom



Dimensions: 13'4" x 13'4"  
Area: 178 sq. ft  
Counted as living area: Yes

Heated: Yes  
Finished: Yes  
Enclosed: Yes  
Contiguous: Yes  
Permitted: Yes  
Wet space: No  
Addition: No  
Conversion: No

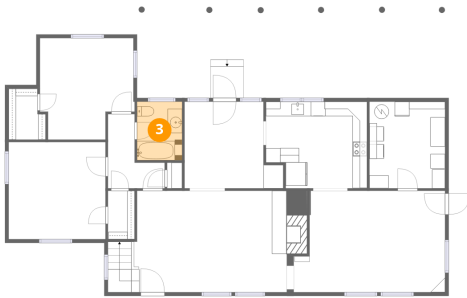
## 2 Floor 1 - Foyer



Dimensions: 13'7" x 11'11"  
Area: 138 sq. ft  
Counted as living area: Yes

Heated: Yes  
Finished: Yes  
Enclosed: Yes  
Contiguous: Yes  
Permitted: Yes  
Wet space: No  
Addition: No  
Conversion: No

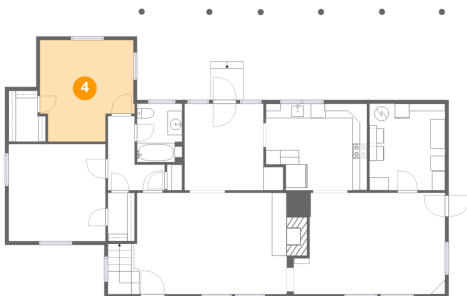
**3** Floor 1 - Bath



Dimensions: 6'2" x 8'1"  
Area: 50 sq. ft  
Counted as living area: Yes

Heated: Yes  
Finished: Yes  
Enclosed: Yes  
Contiguous: Yes  
Permitted: Yes  
Wet space: Yes  
Addition: No  
Conversion: No

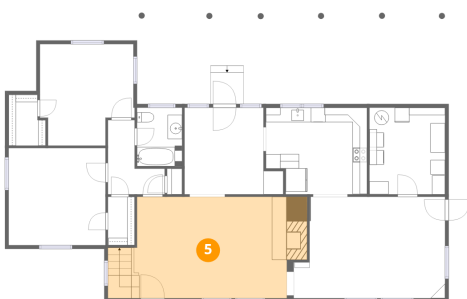
**4** Floor 1 - Bedroom



Dimensions: 13'0" x 13'11"  
Area: 160 sq. ft  
Counted as living area: Yes

Heated: Yes  
Finished: Yes  
Enclosed: Yes  
Contiguous: Yes  
Permitted: Yes  
Wet space: No  
Addition: No  
Conversion: No

**5** Floor 1 - Living Room



Dimensions: 20'11" x 13'11"  
Area: 339 sq. ft  
Counted as living area: Yes

Heated: Yes  
Finished: Yes  
Enclosed: Yes  
Contiguous: Yes  
Permitted: Yes  
Wet space: No  
Addition: No  
Conversion: No

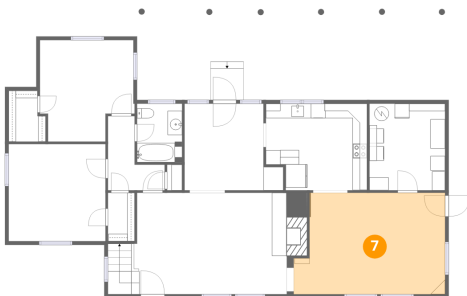
**6** Floor 1 - W.I.C.



Dimensions: 5'1" x 7'0"  
Area: 32 sq. ft  
Counted as living area: Yes

Heated: Yes  
Finished: Yes  
Enclosed: Yes  
Contiguous: Yes  
Permitted: Yes  
Wet space: No  
Addition: No  
Conversion: No

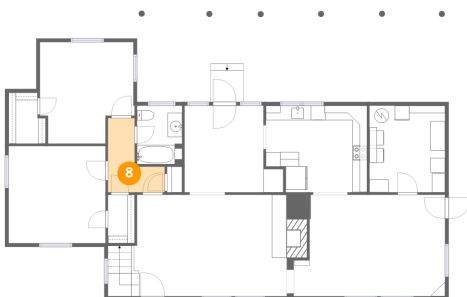
**7** Floor 1 - Dining Room



Dimensions: 20'10" x 13'11"  
Area: 270 sq. ft  
Counted as living area: Yes

Heated: Yes  
Finished: Yes  
Enclosed: Yes  
Contiguous: Yes  
Permitted: Yes  
Wet space: No  
Addition: No  
Conversion: No

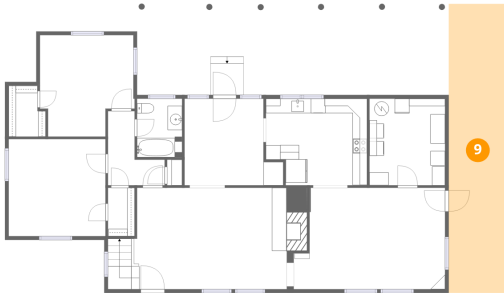
**8** Floor 1 - Hall



Dimensions: 7'10" x 10'2"  
Area: 52 sq. ft  
Counted as living area: Yes

Heated: Yes  
Finished: Yes  
Enclosed: Yes  
Contiguous: Yes  
Permitted: Yes  
Wet space: No  
Addition: No  
Conversion: No

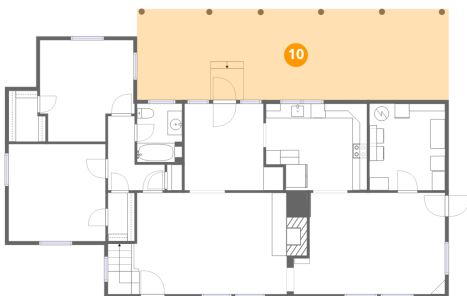
### 9 Floor 1 - Patio



Dimensions: 8'0" x 39'8"  
Area: 318 sq. ft  
Counted as living area: No

Heated: No  
Finished: No  
Enclosed: No  
Contiguous: Yes  
Permitted: Yes  
Wet space: No  
Addition: No  
Conversion: No

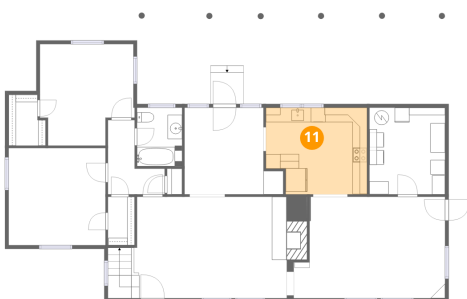
### 10 Floor 1 - Covered Patio



Dimensions: 42'10" x 12'6"  
Area: 536 sq. ft  
Counted as living area: No

Heated: No  
Finished: No  
Enclosed: No  
Contiguous: Yes  
Permitted: Yes  
Wet space: No  
Addition: No  
Conversion: No

### 11 Floor 1 - Kitchen



Dimensions: 13'11" x 11'11"  
Area: 156 sq. ft  
Counted as living area: Yes

Heated: Yes  
Finished: Yes  
Enclosed: Yes  
Contiguous: Yes  
Permitted: Yes  
Wet space: No  
Addition: No  
Conversion: No

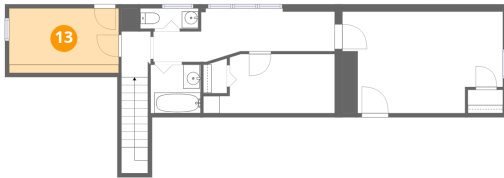
**12** Floor 1 - Laundry



Dimensions: 10'4" x 11'11"  
Area: 124 sq. ft  
Counted as living area: Yes

Heated: Yes  
Finished: Yes  
Enclosed: Yes  
Contiguous: Yes  
Permitted: Yes  
Wet space: No  
Addition: No  
Conversion: No

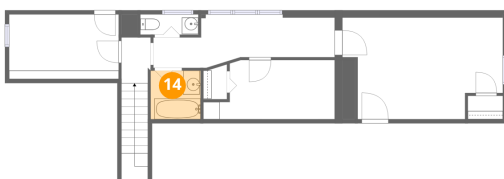
**13** Floor 2 - Office



Dimensions: 13'4" x 7'10"  
Area: 104 sq. ft  
Counted as living area: Yes

Heated: Yes  
Finished: Yes  
Enclosed: Yes  
Contiguous: Yes  
Permitted: Yes  
Wet space: No  
Addition: No  
Conversion: No

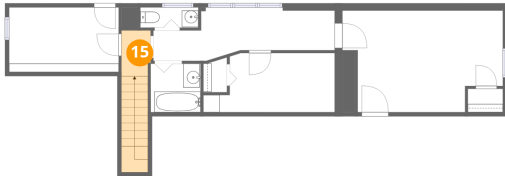
**14** Floor 2 - Bath



Dimensions: 6'0" x 5'11"  
Area: 36 sq. ft  
Counted as living area: Yes

Heated: Yes  
Finished: Yes  
Enclosed: Yes  
Contiguous: Yes  
Permitted: Yes  
Wet space: Yes  
Addition: No  
Conversion: No

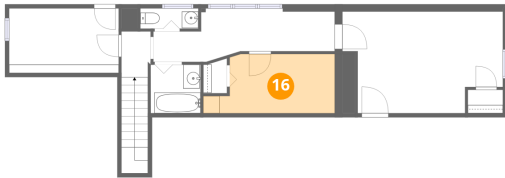
**15** Floor 2 - Hall



Dimensions: 3'7" x 5'7"  
Area: 57 sq. ft  
Counted as living area: Yes

Heated: Yes  
Finished: Yes  
Enclosed: Yes  
Contiguous: Yes  
Permitted: Yes  
Wet space: No  
Addition: No  
Conversion: No

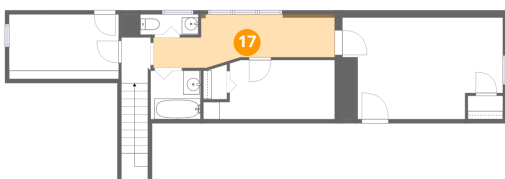
**16** Floor 2 - Bedroom



Dimensions: 16'0" x 7'2"  
Area: 98 sq. ft  
Counted as living area: Yes

Heated: Yes  
Finished: Yes  
Enclosed: Yes  
Contiguous: Yes  
Permitted: Yes  
Wet space: No  
Addition: No  
Conversion: No

**17** Floor 2 - Hall

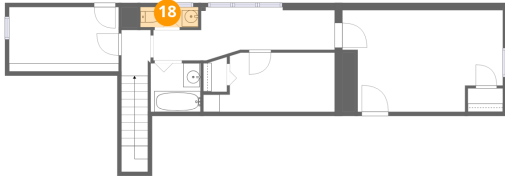


Dimensions: 22'0" x 6'6"  
Area: 109 sq. ft  
Counted as living area: Yes

Heated: Yes  
Finished: Yes  
Enclosed: Yes  
Contiguous: Yes  
Permitted: Yes  
Wet space: No  
Addition: No  
Conversion: No

**18** Floor 2 - Bath

---

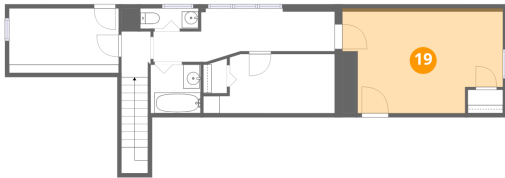


Dimensions: 7'1" x 2'5"  
Area: 17 sq. ft  
Counted as living area: Yes

Heated: Yes  
Finished: Yes  
Enclosed: Yes  
Contiguous: Yes  
Permitted: Yes  
Wet space: Yes  
Addition: No  
Conversion: No

**19** Floor 2 - Bedroom

---



Dimensions: 19'6" x 12'4"  
Area: 219 sq. ft  
Counted as living area: Yes

Heated: Yes  
Finished: Yes  
Enclosed: Yes  
Contiguous: Yes  
Permitted: Yes  
Wet space: No  
Addition: No  
Conversion: No