

# Home data report

## 8274 S St Paul Way, Centennial, CO, US




**Total Area: 4012 sq. ft**

Basement: 1357 sq. ft, 1st Floor: 1417 sq. ft, 2nd Floor: 1238 sq. ft

Excluded: Utility 66 sq. ft, Patio 352 sq. ft, Garage 615 sq. ft, Deck 239 sq. ft, Embedded window 10 sq. ft, Fireplace 11 sq. ft, Walls: 292 sq. ft

### Property summary

 **3** Floors

 **5** Bedrooms

 **3** Bathrooms

Home data report

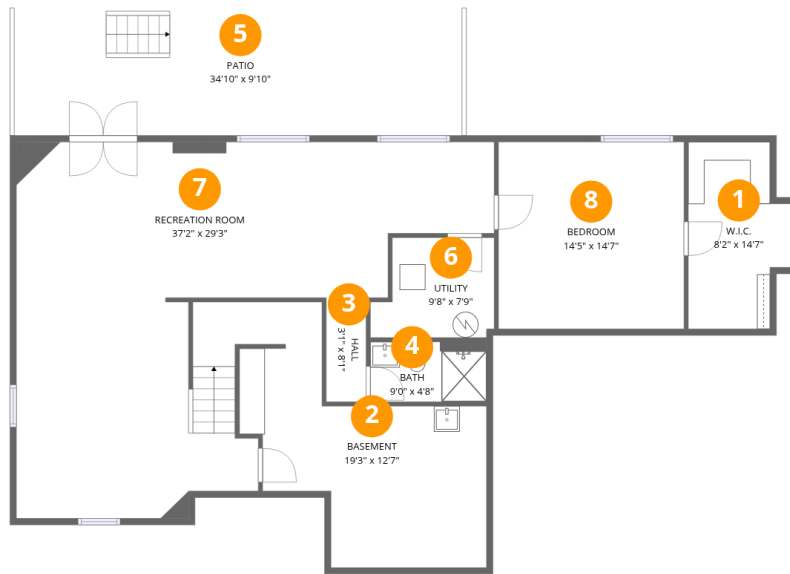
**8274 S St Paul Way,Centennial,CO,US**



**1**  
Half baths



**1**  
Garages



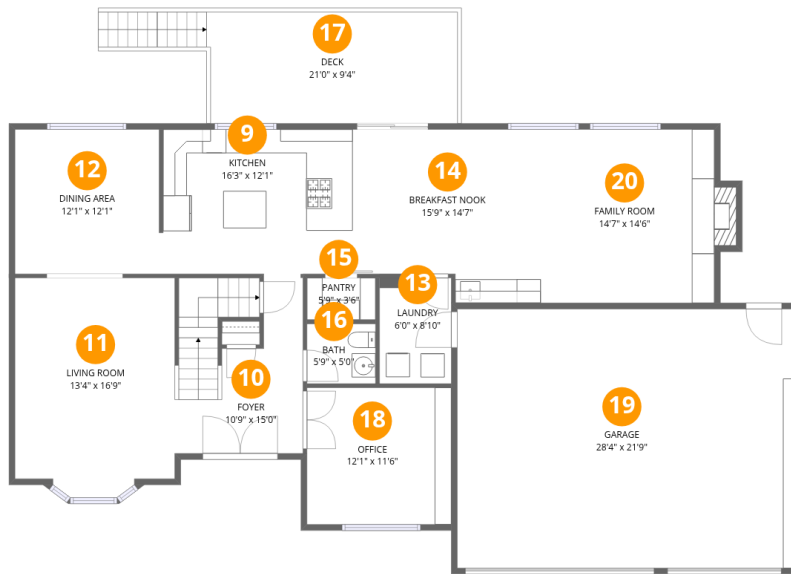
## Room dimensions

Floor 1 Below grade

Total:1357sqft

Excluded: 418sqft

#		Dimensions	sqft	Counted as living area
1	W.I.C.	8'2" x 14'7"	102 sq. ft	Yes
2	Basement	19'3" x 12'7"	260 sq. ft	Yes
3	Hall	3'1" x 8'1"	25 sq. ft	Yes
4	Bath	9'0" x 4'8"	42 sq. ft	Yes
5	Patio	34'10" x 9'10"	352 sq. ft	No
6	Utility	9'8" x 7'9"	66 sq. ft	No
7	Recreation Room	37'2" x 29'3"	680 sq. ft	Yes
8	Bedroom	14'5" x 14'7"	210 sq. ft	Yes



## Room dimensions

Floor 2

Total: 1417 sqft

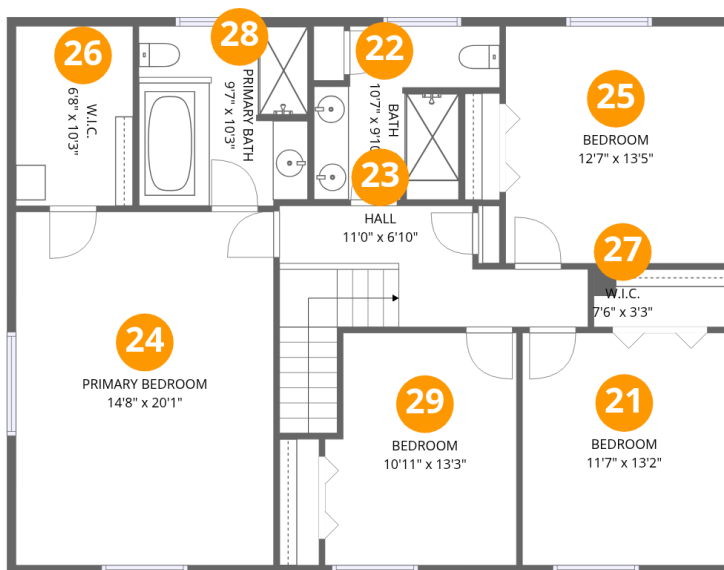
Excluded: 875 sqft

#		Dimensions	sqft	Counted as living area
9	Kitchen	16'3" x 12'1"	193 sq. ft	Yes
10	Foyer	10'9" x 15'0"	145 sq. ft	Yes
11	Living Room	13'4" x 16'9"	225 sq. ft	Yes
12	Dining Area	12'1" x 12'1"	146 sq. ft	Yes
13	Laundry	6'0" x 8'10"	53 sq. ft	Yes
14	Breakfast Nook	15'9" x 14'7"	208 sq. ft	Yes
15	Pantry	5'9" x 3'6"	20 sq. ft	Yes
16	Bath	5'9" x 5'0"	29 sq. ft	Yes
17	Deck	21'0" x 9'4"	239 sq. ft	No
18	Office	12'1" x 11'6"	139 sq. ft	Yes
19	Garage	28'4" x 21'9"	615 sq. ft	No

Home data report

**8274 S St Paul Way,Centennial,CO,US**

#		Dimensions	sqft	Counted as living area
20	Family Room	14'7" x 14'6"	221 sq. ft	Yes



## Room dimensions

Floor 3

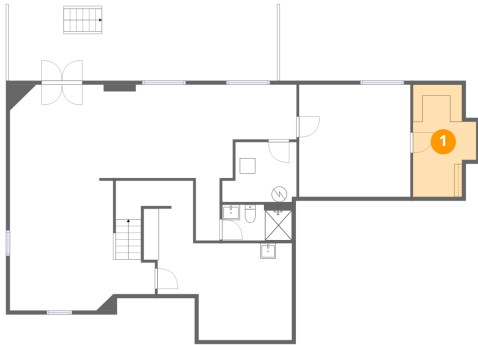
Total: 1238 sqft

Excluded: 0 sqft

#		Dimensions	sqft	Counted as living area
21	Bedroom	11'7" x 13'2"	153 sq. ft	Yes
22	Bath	10'7" x 9'10"	81 sq. ft	Yes
23	Hall	11'0" x 6'10"	117 sq. ft	Yes
24	Primary Bedroom	14'8" x 20'1"	295 sq. ft	Yes
25	Bedroom	12'7" x 13'5"	169 sq. ft	Yes
26	W.I.C.	6'8" x 10'3"	68 sq. ft	Yes
27	W.I.C.	7'6" x 3'3"	25 sq. ft	Yes
28	Primary Bath	9'7" x 10'3"	97 sq. ft	Yes
29	Bedroom	10'11" x 13'3"	138 sq. ft	Yes

**1** Floor 1 - W.I.C.

---

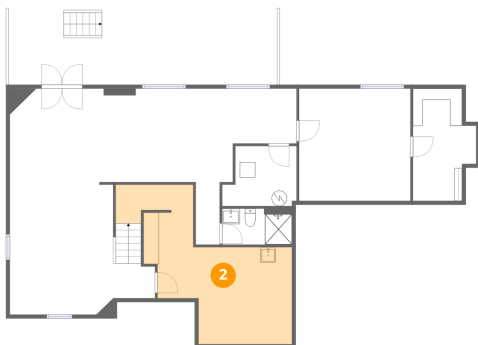


Dimensions: 8'2" x 14'7"  
Area: 102 sq. ft  
Counted as living area: Yes

Heated: Yes  
Finished: Yes  
Enclosed: Yes  
Contiguous: Yes  
Permitted: Yes  
Wet space: No  
Addition: No  
Conversion: No

**2** Floor 1 - Basement

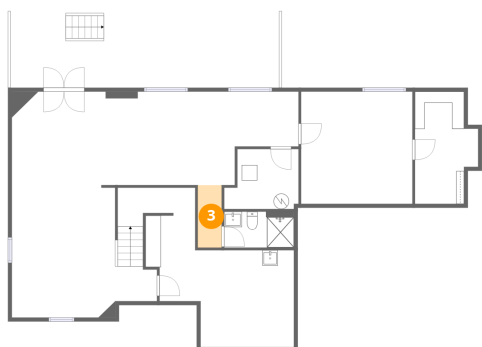
---



Dimensions: 19'3" x 12'7"  
Area: 260 sq. ft  
Counted as living area: Yes

Heated: Yes  
Finished: Yes  
Enclosed: Yes  
Contiguous: Yes  
Permitted: Yes  
Wet space: No  
Addition: No  
Conversion: No

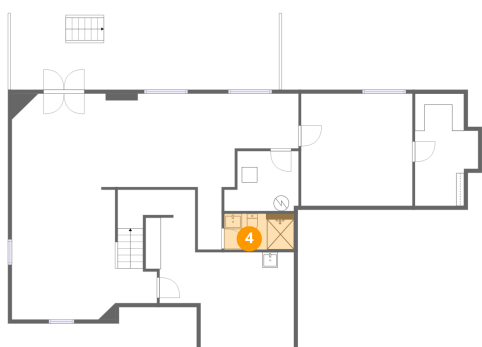
### 3 Floor 1 - Hall



Dimensions: 3'1" x 8'1"  
Area: 25 sq. ft  
Counted as living area: Yes

Heated: Yes  
Finished: Yes  
Enclosed: Yes  
Contiguous: Yes  
Permitted: Yes  
Wet space: No  
Addition: No  
Conversion: No

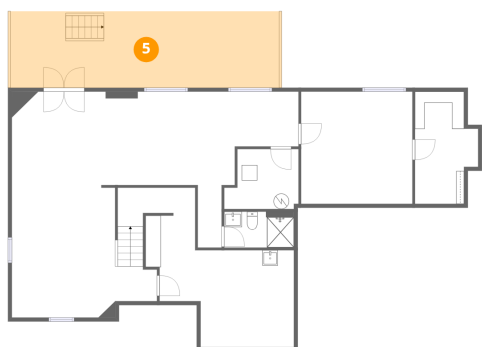
### 4 Floor 1 - Bath



Dimensions: 9'0" x 4'8"  
Area: 42 sq. ft  
Counted as living area: Yes

Heated: Yes  
Finished: Yes  
Enclosed: Yes  
Contiguous: Yes  
Permitted: Yes  
Wet space: Yes  
Addition: No  
Conversion: No

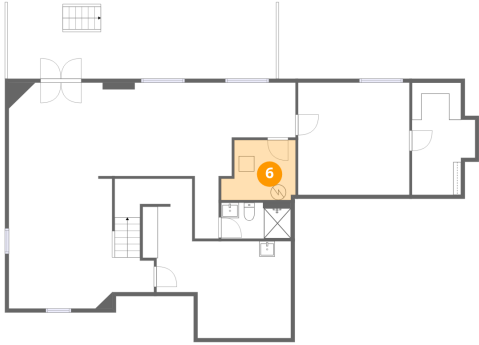
### 5 Floor 1 - Patio



Dimensions: 34'10" x 9'10"  
Area: 352 sq. ft  
Counted as living area: No

Heated: No  
Finished: No  
Enclosed: No  
Contiguous: Yes  
Permitted: Yes  
Wet space: No  
Addition: No  
Conversion: No

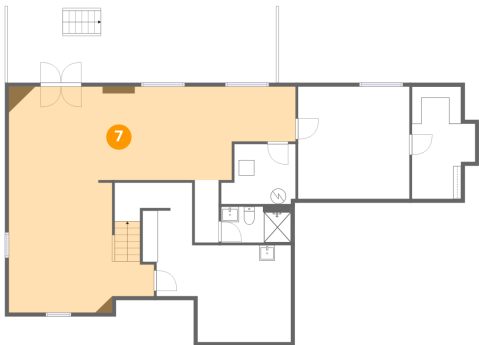
## 6 Floor 1 - Utility



Dimensions: 9'8" x 7'9"  
Area: 66 sq. ft  
Counted as living area: No

Heated: Yes  
Finished: No  
Enclosed: Yes  
Contiguous: Yes  
Permitted: Yes  
Wet space: No  
Addition: No  
Conversion: No

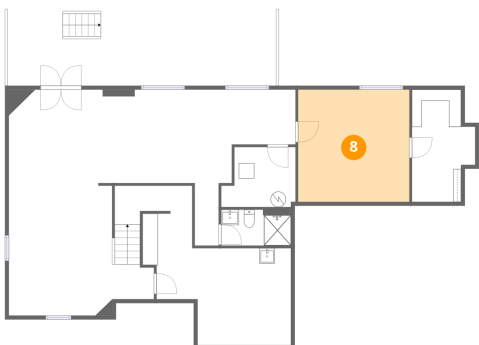
## 7 Floor 1 - Recreation Room



Dimensions: 37'2" x 29'3"  
Area: 680 sq. ft  
Counted as living area: Yes

Heated: Yes  
Finished: Yes  
Enclosed: Yes  
Contiguous: Yes  
Permitted: Yes  
Wet space: No  
Addition: No  
Conversion: No

## 8 Floor 1 - Bedroom



Dimensions: 14'5" x 14'7"  
Area: 210 sq. ft  
Counted as living area: Yes

Heated: Yes  
Finished: Yes  
Enclosed: Yes  
Contiguous: Yes  
Permitted: Yes  
Wet space: No  
Addition: No  
Conversion: No

## 9 Floor 2 - Kitchen



Dimensions: 16'3" x 12'1"  
Area: 193 sq. ft  
Counted as living area: Yes

Heated: Yes  
Finished: Yes  
Enclosed: Yes  
Contiguous: Yes  
Permitted: Yes  
Wet space: No  
Addition: No  
Conversion: No

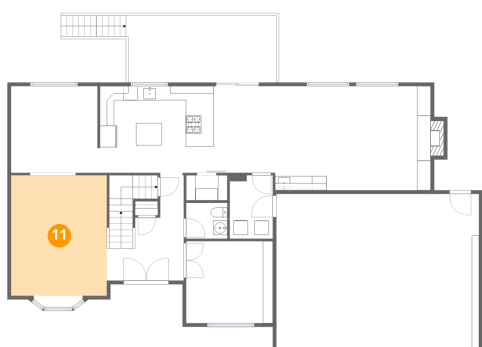
## 10 Floor 2 - Foyer



Dimensions: 10'9" x 15'0"  
Area: 145 sq. ft  
Counted as living area: Yes

Heated: Yes  
Finished: Yes  
Enclosed: Yes  
Contiguous: Yes  
Permitted: Yes  
Wet space: No  
Addition: No  
Conversion: No

## 11 Floor 2 - Living Room



Dimensions: 13'4" x 16'9"  
Area: 225 sq. ft  
Counted as living area: Yes

Heated: Yes  
Finished: Yes  
Enclosed: Yes  
Contiguous: Yes  
Permitted: Yes  
Wet space: No  
Addition: No  
Conversion: No

## 12 Floor 2 - Dining Area



Dimensions: 12'1" x 12'1"  
Area: 146 sq. ft  
Counted as living area: Yes

Heated: Yes  
Finished: Yes  
Enclosed: Yes  
Contiguous: Yes  
Permitted: Yes  
Wet space: No  
Addition: No  
Conversion: No

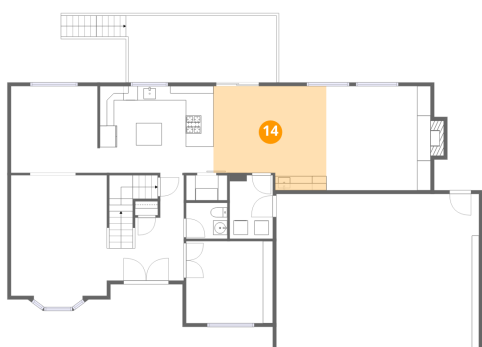
## 13 Floor 2 - Laundry



Dimensions: 6'0" x 8'10"  
Area: 53 sq. ft  
Counted as living area: Yes

Heated: Yes  
Finished: Yes  
Enclosed: Yes  
Contiguous: Yes  
Permitted: Yes  
Wet space: No  
Addition: No  
Conversion: No

## 14 Floor 2 - Breakfast Nook



Dimensions: 15'9" x 14'7"  
Area: 208 sq. ft  
Counted as living area: Yes

Heated: Yes  
Finished: Yes  
Enclosed: Yes  
Contiguous: Yes  
Permitted: Yes  
Wet space: No  
Addition: No  
Conversion: No

### 15 Floor 2 - Pantry



Dimensions: 5'9" x 3'6"  
Area: 20 sq. ft  
Counted as living area: Yes

Heated: Yes  
Finished: Yes  
Enclosed: Yes  
Contiguous: Yes  
Permitted: Yes  
Wet space: No  
Addition: No  
Conversion: No

### 16 Floor 2 - Bath



Dimensions: 5'9" x 5'0"  
Area: 29 sq. ft  
Counted as living area: Yes

Heated: Yes  
Finished: Yes  
Enclosed: Yes  
Contiguous: Yes  
Permitted: Yes  
Wet space: Yes  
Addition: No  
Conversion: No

### 17 Floor 2 - Deck



Dimensions: 21'0" x 9'4"  
Area: 239 sq. ft  
Counted as living area: No

Heated: No  
Finished: No  
Enclosed: No  
Contiguous: Yes  
Permitted: Yes  
Wet space: No  
Addition: No  
Conversion: No

**18** Floor 2 - Office



Dimensions: 12'1" x 11'6"  
Area: 139 sq. ft  
Counted as living area: Yes

Heated: Yes  
Finished: Yes  
Enclosed: Yes  
Contiguous: Yes  
Permitted: Yes  
Wet space: No  
Addition: No  
Conversion: No

**19** Floor 2 - Garage



Dimensions: 28'4" x 21'9"  
Area: 615 sq. ft  
Counted as living area: No

Heated: No  
Finished: No  
Enclosed: Yes  
Contiguous: Yes  
Permitted: Yes  
Wet space: No  
Addition: No  
Conversion: No

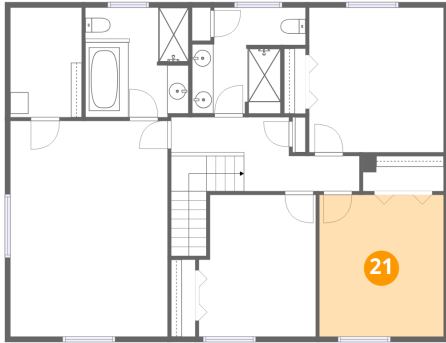
**20** Floor 2 - Family Room



Dimensions: 14'7" x 14'6"  
Area: 221 sq. ft  
Counted as living area: Yes

Heated: Yes  
Finished: Yes  
Enclosed: Yes  
Contiguous: Yes  
Permitted: Yes  
Wet space: No  
Addition: No  
Conversion: No

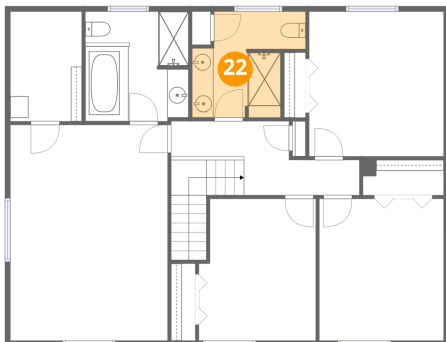
### 21 Floor 3 - Bedroom



Dimensions: 11'7" x 13'2"  
Area: 153 sq. ft  
Counted as living area: Yes

Heated: Yes  
Finished: Yes  
Enclosed: Yes  
Contiguous: Yes  
Permitted: Yes  
Wet space: No  
Addition: No  
Conversion: No

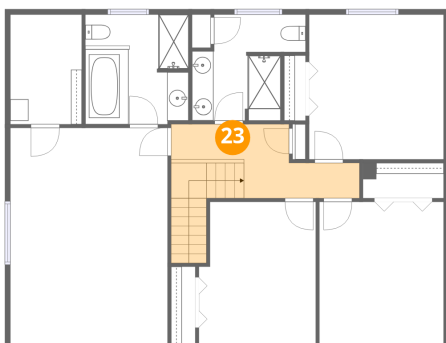
### 22 Floor 3 - Bath



Dimensions: 10'7" x 9'10"  
Area: 81 sq. ft  
Counted as living area: Yes

Heated: Yes  
Finished: Yes  
Enclosed: Yes  
Contiguous: Yes  
Permitted: Yes  
Wet space: Yes  
Addition: No  
Conversion: No

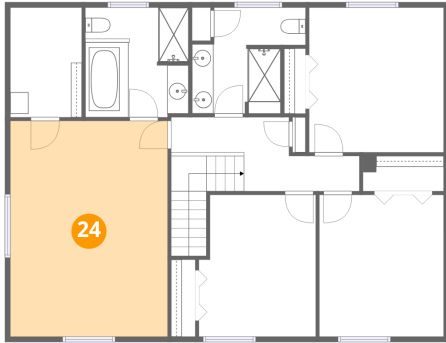
### 23 Floor 3 - Hall



Dimensions: 11'0" x 6'10"  
Area: 117 sq. ft  
Counted as living area: Yes

Heated: Yes  
Finished: Yes  
Enclosed: Yes  
Contiguous: Yes  
Permitted: Yes  
Wet space: No  
Addition: No  
Conversion: No

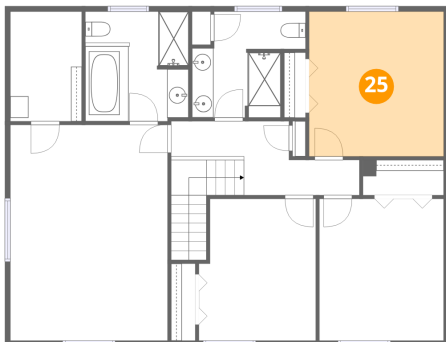
**24** Floor 3 - Primary Bedroom



Dimensions: 14'8" x 20'1"  
Area: 295 sq. ft  
Counted as living area: Yes

Heated: Yes  
Finished: Yes  
Enclosed: Yes  
Contiguous: Yes  
Permitted: Yes  
Wet space: No  
Addition: No  
Conversion: No

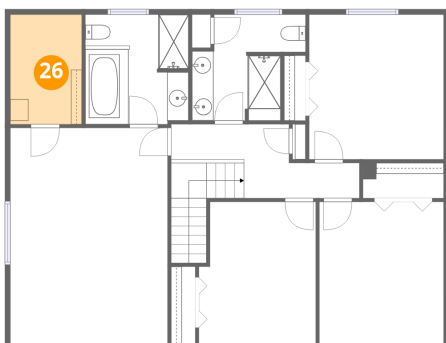
**25** Floor 3 - Bedroom



Dimensions: 12'7" x 13'5"  
Area: 169 sq. ft  
Counted as living area: Yes

Heated: Yes  
Finished: Yes  
Enclosed: Yes  
Contiguous: Yes  
Permitted: Yes  
Wet space: No  
Addition: No  
Conversion: No

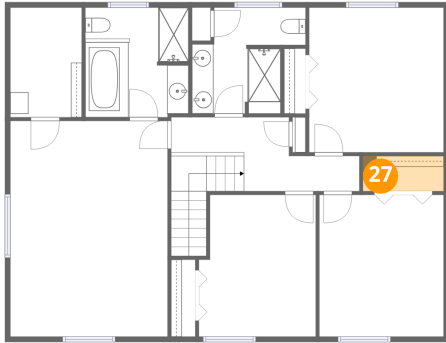
**26** Floor 3 - W.I.C.



Dimensions: 6'8" x 10'3"  
Area: 68 sq. ft  
Counted as living area: Yes

Heated: Yes  
Finished: Yes  
Enclosed: Yes  
Contiguous: Yes  
Permitted: Yes  
Wet space: No  
Addition: No  
Conversion: No

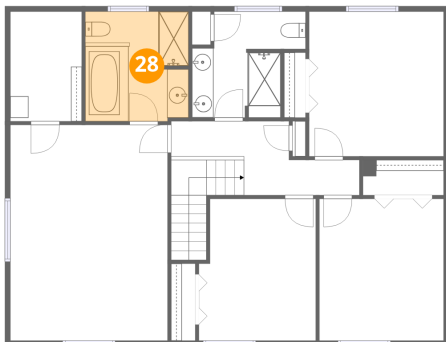
**27** Floor 3 - W.I.C.



Dimensions: 7'6" x 3'3"  
Area: 25 sq. ft  
Counted as living area: Yes

Heated: Yes  
Finished: Yes  
Enclosed: Yes  
Contiguous: Yes  
Permitted: Yes  
Wet space: No  
Addition: No  
Conversion: No

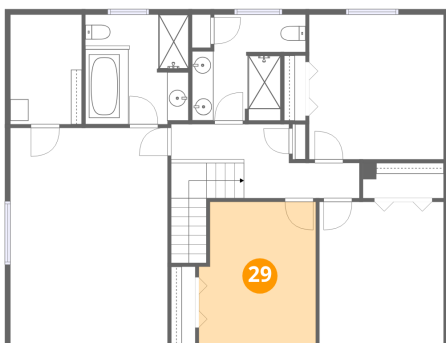
**28** Floor 3 - Primary Bath



Dimensions: 9'7" x 10'3"  
Area: 97 sq. ft  
Counted as living area: Yes

Heated: Yes  
Finished: Yes  
Enclosed: Yes  
Contiguous: Yes  
Permitted: Yes  
Wet space: Yes  
Addition: No  
Conversion: No

**29** Floor 3 - Bedroom



Dimensions: 10'11" x 13'3"  
Area: 138 sq. ft  
Counted as living area: Yes

Heated: Yes  
Finished: Yes  
Enclosed: Yes  
Contiguous: Yes  
Permitted: Yes  
Wet space: No  
Addition: No  
Conversion: No