

Home data report

207 Duncraig Drive, Wyndhurst, Lynchburg, Lynchburg city,
Virginia, United States, 24502



Total Area: 2233 sq. ft

1st Floor: 1956 sq. ft, 2nd Floor: 277 sq. ft


Excluded: Garage 429 sq. ft, Walls: 173 sq. ft

Property summary



Home data report

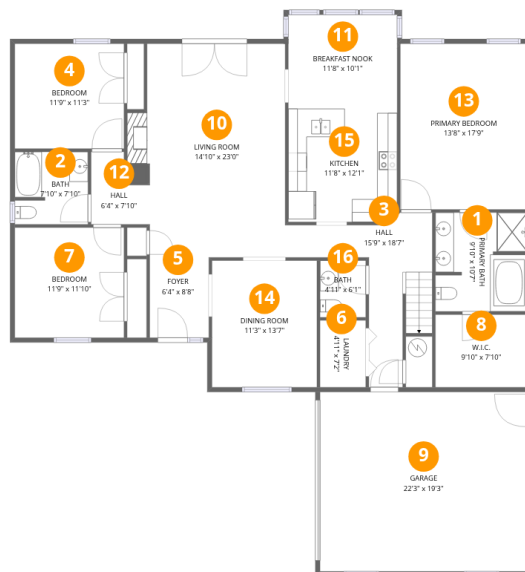
**207 Duncraig Drive, Wyndhurst, Lynchburg, Lynchburg city,
Virginia, United States, 24502**

 **2**
Half baths

 **1**
Garages

Home data report

207 Duncraig Drive, Wyndhurst, Lynchburg, Lynchburg city, Virginia, United States, 24502



Room dimensions

Floor 1

Total:1956sqft Excluded: 429sqft

#		Dimensions	sqft	Counted as living area
1	Primary Bath	9'10" x 10'7"	103 sq. ft	Yes
2	Bath	7'10" x 7'10"	60 sq. ft	Yes
3	Hall	15'9" x 18'7"	136 sq. ft	Yes
4	Bedroom	11'9" x 11'3"	132 sq. ft	Yes
5	Foyer	6'4" x 8'8"	55 sq. ft	Yes
6	Laundry	4'11" x 7'2"	35 sq. ft	Yes
7	Bedroom	11'9" x 11'10"	139 sq. ft	Yes
8	W.I.C.	9'10" x 7'10"	77 sq. ft	Yes
9	Garage	22'3" x 19'3"	429 sq. ft	No
10	Living Room	14'10" x 23'0"	350 sq. ft	Yes
11	Breakfast Nook	11'8" x 10'1"	118 sq. ft	Yes

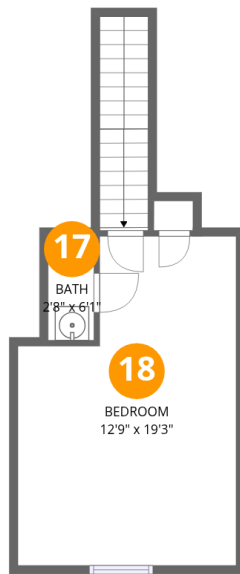
Home data report

**207 Duncraig Drive, Wyndhurst, Lynchburg, Lynchburg city,
Virginia, United States, 24502**

#		Dimensions	sqft	Counted as living area
12	Hall	6'4" x 7'10"	39 sq. ft	Yes
13	Primary Bedroom	13'8" x 17'9"	243 sq. ft	Yes
14	Dining Room	11'3" x 13'7"	153 sq. ft	Yes
15	Kitchen	11'8" x 12'1"	141 sq. ft	Yes
16	Bath	4'11" x 6'1"	30 sq. ft	Yes

Home data report

207 Duncraig Drive, Wyndhurst, Lynchburg, Lynchburg city, Virginia, United States, 24502



Room dimensions

Floor 2

Total:277sqft Excluded: 0sqft

#		Dimensions	sqft	Counted as living area
17	Bath	2'8" x 6'1"	16 sq. ft	Yes
18	Bedroom	12'9" x 19'3"	216 sq. ft	Yes

1 Floor 1 - Primary Bath



Dimensions: 9'10" x 10'7"
Area: 103 sq. ft
Counted as living area: Yes

Heated: Yes
Finished: Yes
Enclosed: Yes
Contiguous: Yes
Permitted: Yes
Wet space: Yes
Addition: No
Conversion: No

2 Floor 1 - Bath



Dimensions: 7'10" x 7'10"
Area: 60 sq. ft
Counted as living area: Yes

Heated: Yes
Finished: Yes
Enclosed: Yes
Contiguous: Yes
Permitted: Yes
Wet space: Yes
Addition: No
Conversion: No

3 Floor 1 - Hall



Dimensions: 15'9" x 18'7"
Area: 136 sq. ft
Counted as living area: Yes

Heated: Yes
Finished: Yes
Enclosed: Yes
Contiguous: Yes
Permitted: Yes
Wet space: No
Addition: No
Conversion: No

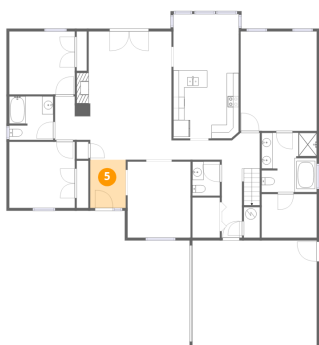
4 Floor 1 - Bedroom



Dimensions: 11'9" x 11'3"
Area: 132 sq. ft
Counted as living area: Yes

Heated: Yes
Finished: Yes
Enclosed: Yes
Contiguous: Yes
Permitted: Yes
Wet space: No
Addition: No
Conversion: No

5 Floor 1 - Foyer



Dimensions: 6'4" x 8'8"
Area: 55 sq. ft
Counted as living area: Yes

Heated: Yes
Finished: Yes
Enclosed: Yes
Contiguous: Yes
Permitted: Yes
Wet space: No
Addition: No
Conversion: No

6 Floor 1 - Laundry



Dimensions: 4'11" x 7'2"
Area: 35 sq. ft
Counted as living area: Yes

Heated: Yes
Finished: Yes
Enclosed: Yes
Contiguous: Yes
Permitted: Yes
Wet space: No
Addition: No
Conversion: No

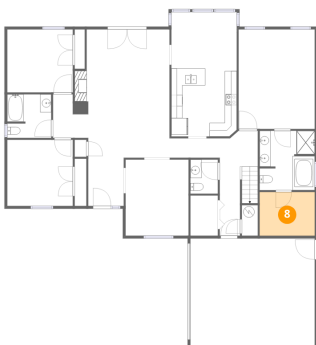
7 Floor 1 - Bedroom



Dimensions: 11'9" x 11'10"
Area: 139 sq. ft
Counted as living area: Yes

Heated: Yes
Finished: Yes
Enclosed: Yes
Contiguous: Yes
Permitted: Yes
Wet space: No
Addition: No
Conversion: No

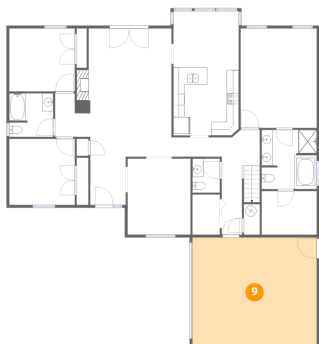
8 Floor 1 - W.I.C.



Dimensions: 9'10" x 7'10"
Area: 77 sq. ft
Counted as living area: Yes

Heated: Yes
Finished: Yes
Enclosed: Yes
Contiguous: Yes
Permitted: Yes
Wet space: No
Addition: No
Conversion: No

9 Floor 1 - Garage



Dimensions: 22'3" x 19'3"
Area: 429 sq. ft
Counted as living area: No

Heated: No
Finished: No
Enclosed: Yes
Contiguous: Yes
Permitted: Yes
Wet space: No
Addition: No
Conversion: No

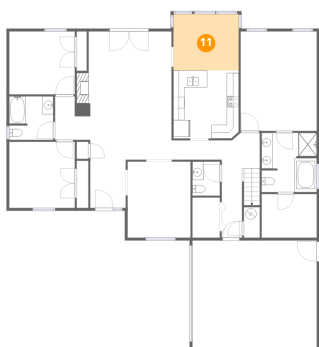
10 Floor 1 - Living Room



Dimensions: 14'10" x 23'0"
Area: 350 sq. ft
Counted as living area: Yes

Heated: Yes
Finished: Yes
Enclosed: Yes
Contiguous: Yes
Permitted: Yes
Wet space: No
Addition: No
Conversion: No

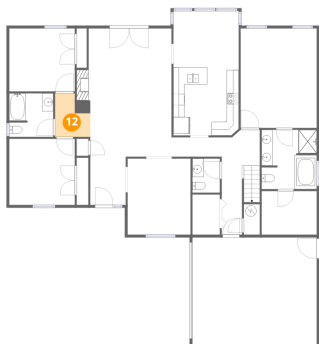
11 Floor 1 - Breakfast Nook



Dimensions: 11'8" x 10'1"
Area: 118 sq. ft
Counted as living area: Yes

Heated: Yes
Finished: Yes
Enclosed: Yes
Contiguous: Yes
Permitted: Yes
Wet space: No
Addition: No
Conversion: No

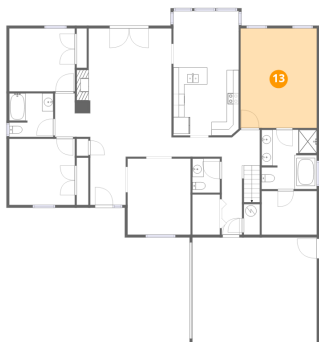
12 Floor 1 - Hall



Dimensions: 6'4" x 7'10"
Area: 39 sq. ft
Counted as living area: Yes

Heated: Yes
Finished: Yes
Enclosed: Yes
Contiguous: Yes
Permitted: Yes
Wet space: No
Addition: No
Conversion: No

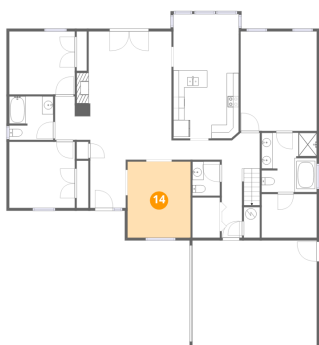
13 Floor 1 - Primary Bedroom



Dimensions: 13'8" x 17'9"
Area: 243 sq. ft
Counted as living area: Yes

Heated: Yes
Finished: Yes
Enclosed: Yes
Contiguous: Yes
Permitted: Yes
Wet space: No
Addition: No
Conversion: No

14 Floor 1 - Dining Room

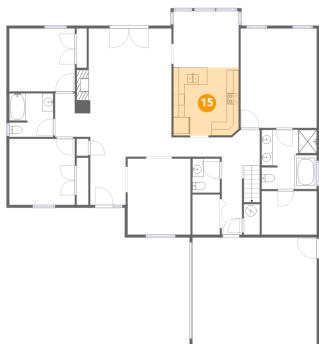


Dimensions: 11'3" x 13'7"
Area: 153 sq. ft
Counted as living area: Yes

Heated: Yes
Finished: Yes
Enclosed: Yes
Contiguous: Yes
Permitted: Yes
Wet space: No
Addition: No
Conversion: No

207 Duncraig Drive, Wyndhurst, Lynchburg, Lynchburg city,
Virginia, United States, 24502

15 Floor 1 - Kitchen



Dimensions: 11'8" x 12'1"
Area: 141 sq. ft
Counted as living area: Yes

Heated: Yes
Finished: Yes
Enclosed: Yes
Contiguous: Yes
Permitted: Yes
Wet space: No
Addition: No
Conversion: No

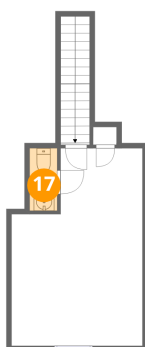
16 Floor 1 - Bath



Dimensions: 4'11" x 6'1"
Area: 30 sq. ft
Counted as living area: Yes

Heated: Yes
Finished: Yes
Enclosed: Yes
Contiguous: Yes
Permitted: Yes
Wet space: Yes
Addition: No
Conversion: No

17 Floor 2 - Bath



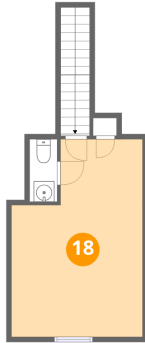
Dimensions: 2'8" x 6'1"
Area: 16 sq. ft
Counted as living area: Yes

Heated: Yes
Finished: Yes
Enclosed: Yes
Contiguous: Yes
Permitted: Yes
Wet space: Yes
Addition: No
Conversion: No

Home data report

207 Duncraig Drive, Wyndhurst, Lynchburg, Lynchburg city,
Virginia, United States, 24502

18 Floor 2 - Bedroom



Dimensions: 12'9" x 19'3"
Area: 216 sq. ft
Counted as living area: Yes

Heated: Yes
Finished: Yes
Enclosed: Yes
Contiguous: Yes
Permitted: Yes
Wet space: No
Addition: No
Conversion: No