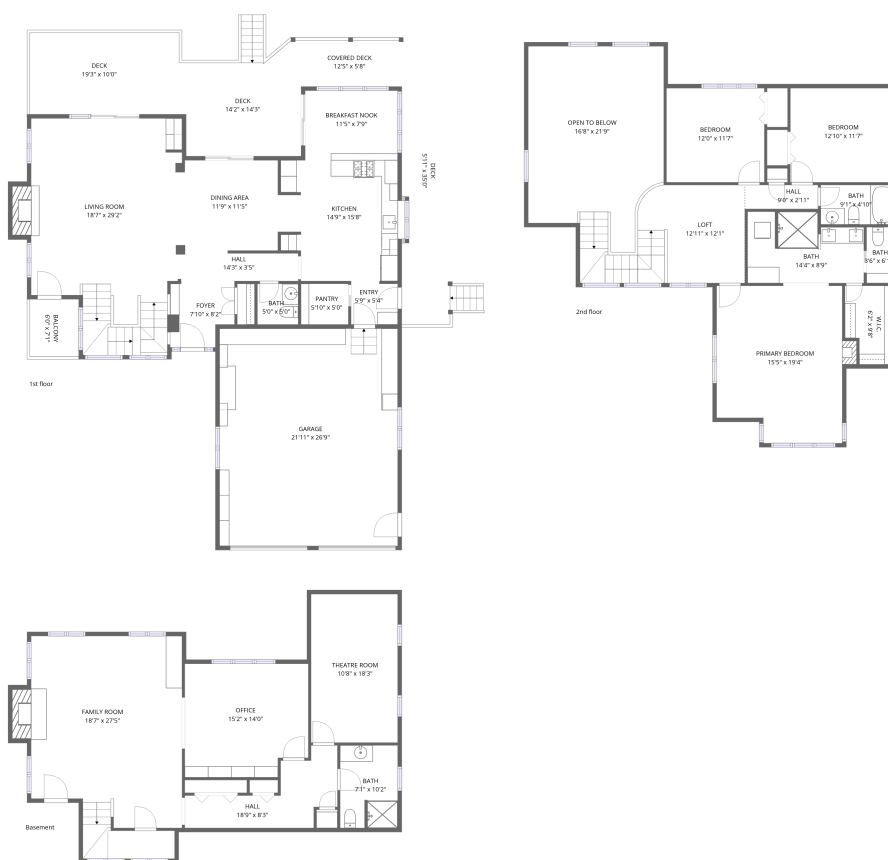


3140 Wild Dunes Path, Stevensville, MI, US



Total Area: 3350 sq. ft

Basement: 1088 sq. ft, 1st Floor: 1145 sq. ft, 2nd Floor: 1117 sq. ft

Excluded: Fireplace 34 sq. ft, Garage 586 sq. ft, Balcony 42 sq. ft, Deck 591 sq. ft, Covered deck 71 sq. ft, Open to below 353 sq. ft, Walls: 291 sq. ft

Property summary



Home data report

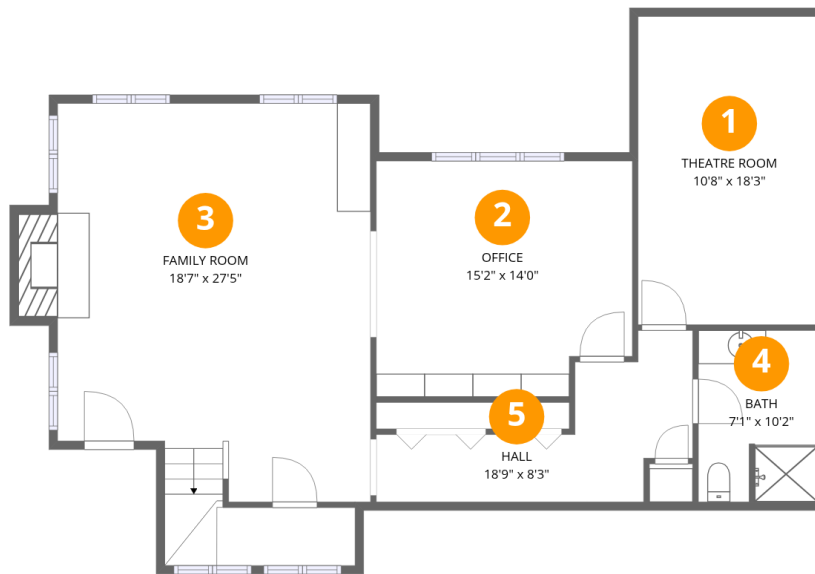
3140 Wild Dunes Path,Stevensville,MI,US



1
Half baths



1
Garages



Room dimensions

Floor 1 Below grade

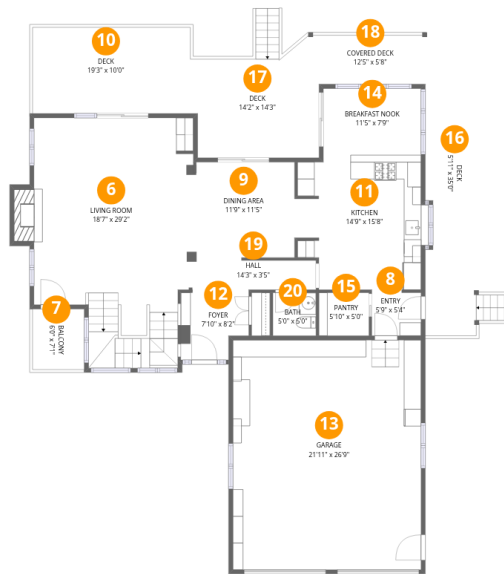
Total:1088sqft

Excluded: 17sqft

#		Dimensions	sqft	Counted as living area
1	Theatre Room	10'8" x 18'3"	195 sq. ft	Yes
2	Office	15'2" x 14'0"	212 sq. ft	Yes
3	Family Room	18'7" x 27'5"	508 sq. ft	Yes
4	Bath	7'1" x 10'2"	72 sq. ft	Yes
5	Hall	18'9" x 8'3"	154 sq. ft	Yes

Home data report

3140 Wild Dunes Path,Stevensville,MI,US



Room dimensions

Floor 2

Total:1145sqft

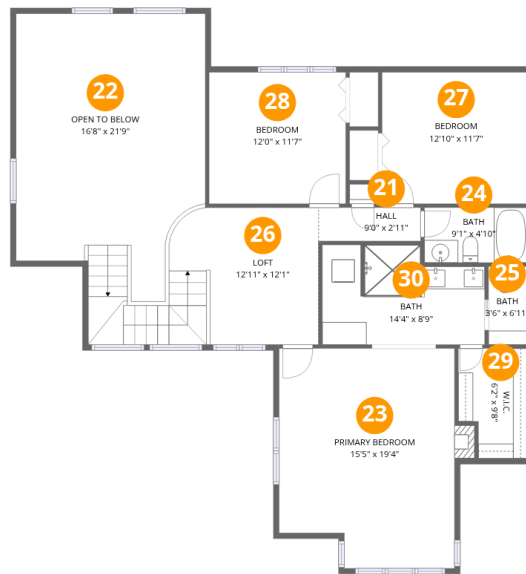
Excluded: 1307sqft

#		Dimensions	sqft	Counted as living area
6	Living Room	18'7" x 29'2"	541 sq. ft	Yes
7	Balcony	6'0" x 7'1"	42 sq. ft	No
8	Entry	5'9" x 5'4"	31 sq. ft	Yes
9	Dining Area	11'9" x 11'5"	135 sq. ft	Yes
10	Deck	19'3" x 10'0"	193 sq. ft	No
11	Kitchen	14'9" x 15'8"	231 sq. ft	Yes
12	Foyer	7'10" x 8'2"	64 sq. ft	Yes
13	Garage	21'11" x 26'9"	586 sq. ft	No
14	Breakfast Nook	11'5" x 7'9"	88 sq. ft	Yes
15	Pantry	5'10" x 5'0"	29 sq. ft	Yes
16	Deck	5'11" x 35'0"	207 sq. ft	No

Home data report

3140 Wild Dunes Path,Stevensville,MI,US

#		Dimensions	sqft	Counted as living area
17	Deck	14'2" x 14'3"	202 sq. ft	No
18	Covered Deck	12'5" x 5'8"	71 sq. ft	No
19	Hall	14'3" x 3'5"	49 sq. ft	Yes
20	Bath	5'0" x 5'0"	25 sq. ft	Yes



Room dimensions

Floor 3

Total:1117sqft

Excluded: 353sqft

#		Dimensions	sqft	Counted as living area
21	Hall	9'0" x 2'11"	26 sq. ft	Yes
22	Open To Below	16'8" x 21'9"	362 sq. ft	No
23	Primary Bedroom	15'5" x 19'4"	298 sq. ft	Yes
24	Bath	9'1" x 4'10"	44 sq. ft	Yes
25	Bath	3'6" x 6'11"	24 sq. ft	Yes
26	Loft	12'11" x 12'1"	156 sq. ft	Yes
27	Bedroom	12'10" x 11'7"	148 sq. ft	Yes
28	Bedroom	12'0" x 11'7"	139 sq. ft	Yes
29	W.I.C.	6'2" x 9'8"	59 sq. ft	Yes
30	Bath	14'4" x 8'9"	126 sq. ft	Yes

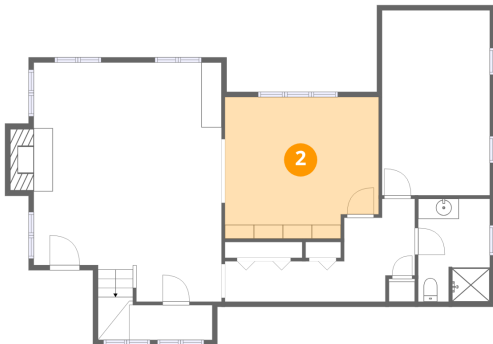
1 Floor 1 - Theatre Room



Dimensions: 10'8" x 18'3"
Area: 195 sq. ft
Counted as living area: Yes

Heated: Yes
Finished: Yes
Enclosed: Yes
Contiguous: Yes
Permitted: Yes
Wet space: No
Addition: No
Conversion: No

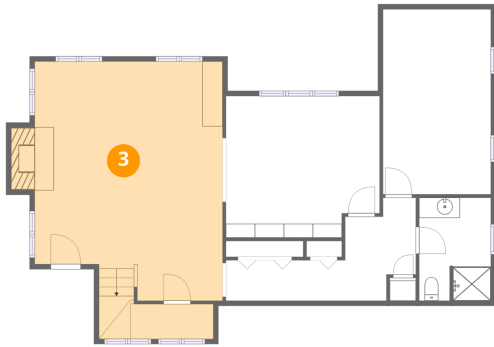
2 Floor 1 - Office



Dimensions: 15'2" x 14'0"
Area: 212 sq. ft
Counted as living area: Yes

Heated: Yes
Finished: Yes
Enclosed: Yes
Contiguous: Yes
Permitted: Yes
Wet space: No
Addition: No
Conversion: No

3 Floor 1 - Family Room



Dimensions: 18'7" x 27'5"
Area: 508 sq. ft
Counted as living area: Yes

Heated: Yes
Finished: Yes
Enclosed: Yes
Contiguous: Yes
Permitted: Yes
Wet space: No
Addition: No
Conversion: No

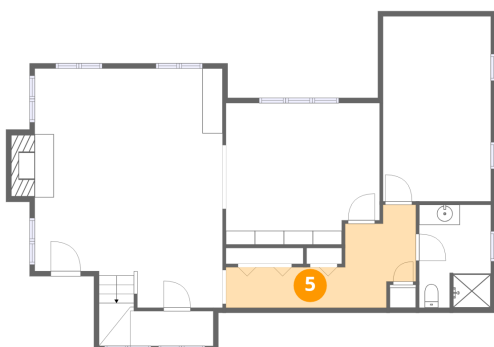
4 Floor 1 - Bath



Dimensions: 7'1" x 10'2"
Area: 72 sq. ft
Counted as living area: Yes

Heated: Yes
Finished: Yes
Enclosed: Yes
Contiguous: Yes
Permitted: Yes
Wet space: Yes
Addition: No
Conversion: No

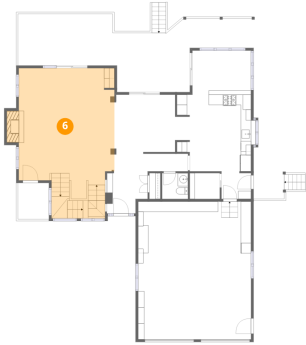
5 Floor 1 - Hall



Dimensions: 18'9" x 8'3"
Area: 154 sq. ft
Counted as living area: Yes

Heated: Yes
Finished: Yes
Enclosed: Yes
Contiguous: Yes
Permitted: Yes
Wet space: No
Addition: No
Conversion: No

6 Floor 2 - Living Room



Dimensions: 18'7" x 29'2"
Area: 541 sq. ft
Counted as living area: Yes

Heated: Yes
Finished: Yes
Enclosed: Yes
Contiguous: Yes
Permitted: Yes
Wet space: No
Addition: No
Conversion: No

7 Floor 2 - Balcony



Dimensions: 6'0" x 7'1"
Area: 42 sq. ft
Counted as living area: No

Heated: No
Finished: No
Enclosed: No
Contiguous: Yes
Permitted: Yes
Wet space: No
Addition: No
Conversion: No

8 Floor 2 - Entry



Dimensions: 5'9" x 5'4"
Area: 31 sq. ft
Counted as living area: Yes

Heated: Yes
Finished: Yes
Enclosed: Yes
Contiguous: Yes
Permitted: Yes
Wet space: No
Addition: No
Conversion: No

9 Floor 2 - Dining Area



Dimensions: 11'9" x 11'5"
Area: 135 sq. ft
Counted as living area: Yes

Heated: Yes
Finished: Yes
Enclosed: Yes
Contiguous: Yes
Permitted: Yes
Wet space: No
Addition: No
Conversion: No

10 Floor 2 - Deck



Dimensions: 19'3" x 10'0"
Area: 193 sq. ft
Counted as living area: No

Heated: No
Finished: No
Enclosed: No
Contiguous: Yes
Permitted: Yes
Wet space: No
Addition: No
Conversion: No

11 Floor 2 - Kitchen



Dimensions: 14'9" x 15'8"
Area: 231 sq. ft
Counted as living area: Yes

Heated: Yes
Finished: Yes
Enclosed: Yes
Contiguous: Yes
Permitted: Yes
Wet space: No
Addition: No
Conversion: No

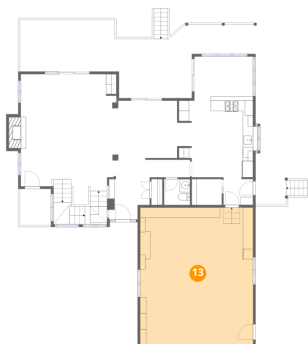
12 Floor 2 - Foyer



Dimensions: 7'10" x 8'2"
Area: 64 sq. ft
Counted as living area: Yes

Heated: Yes
Finished: Yes
Enclosed: Yes
Contiguous: Yes
Permitted: Yes
Wet space: No
Addition: No
Conversion: No

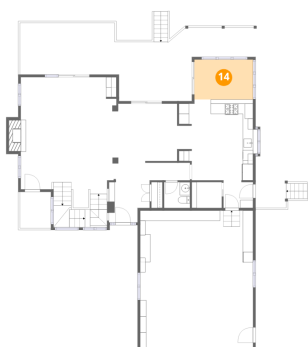
13 Floor 2 - Garage



Dimensions: 21'11" x 26'9"
Area: 586 sq. ft
Counted as living area: No

Heated: No
Finished: No
Enclosed: Yes
Contiguous: Yes
Permitted: Yes
Wet space: No
Addition: No
Conversion: No

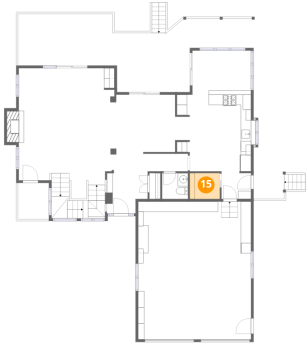
14 Floor 2 - Breakfast Nook



Dimensions: 11'5" x 7'9"
Area: 88 sq. ft
Counted as living area: Yes

Heated: Yes
Finished: Yes
Enclosed: Yes
Contiguous: Yes
Permitted: Yes
Wet space: No
Addition: No
Conversion: No

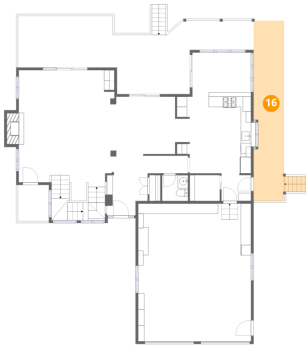
15 Floor 2 - Pantry



Dimensions: 5'10" x 5'0"
Area: 29 sq. ft
Counted as living area: Yes

Heated: Yes
Finished: Yes
Enclosed: Yes
Contiguous: Yes
Permitted: Yes
Wet space: No
Addition: No
Conversion: No

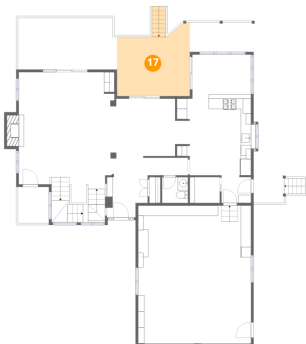
16 Floor 2 - Deck



Dimensions: 5'11" x 35'0"
Area: 207 sq. ft
Counted as living area: No

Heated: No
Finished: No
Enclosed: No
Contiguous: Yes
Permitted: Yes
Wet space: No
Addition: No
Conversion: No

17 Floor 2 - Deck



Dimensions: 14'2" x 14'3"
Area: 202 sq. ft
Counted as living area: No

Heated: No
Finished: No
Enclosed: No
Contiguous: Yes
Permitted: Yes
Wet space: No
Addition: No
Conversion: No

18 Floor 2 - Covered Deck



Dimensions: 12'5" x 5'8"
Area: 71 sq. ft
Counted as living area: No

Heated: No
Finished: No
Enclosed: No
Contiguous: Yes
Permitted: Yes
Wet space: No
Addition: No
Conversion: No

19 Floor 2 - Hall



Dimensions: 14'3" x 3'5"
Area: 49 sq. ft
Counted as living area: Yes

Heated: Yes
Finished: Yes
Enclosed: Yes
Contiguous: Yes
Permitted: Yes
Wet space: No
Addition: No
Conversion: No

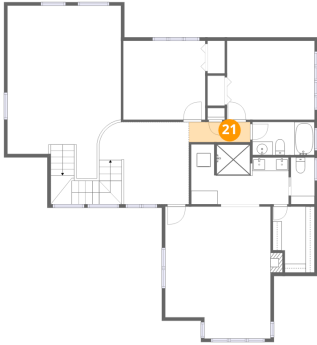
20 Floor 2 - Bath



Dimensions: 5'0" x 5'0"
Area: 25 sq. ft
Counted as living area: Yes

Heated: Yes
Finished: Yes
Enclosed: Yes
Contiguous: Yes
Permitted: Yes
Wet space: Yes
Addition: No
Conversion: No

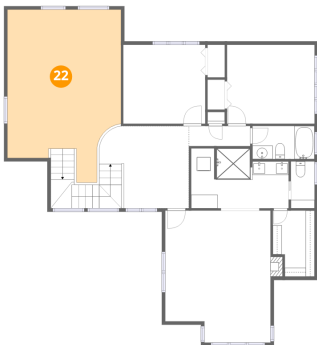
21 Floor 3 - Hall



Dimensions: 9'0" x 2'11"
Area: 26 sq. ft
Counted as living area: Yes

Heated: Yes
Finished: Yes
Enclosed: Yes
Contiguous: Yes
Permitted: Yes
Wet space: No
Addition: No
Conversion: No

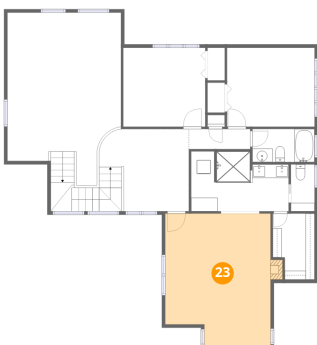
22 Floor 3 - Open To Below



Dimensions: 16'8" x 21'9"
Area: 362 sq. ft
Counted as living area: No

Heated: No
Finished: No
Enclosed: No
Contiguous: Yes
Permitted: No
Wet space: No
Addition: No
Conversion: No

23 Floor 3 - Primary Bedroom



Dimensions: 15'5" x 19'4"
Area: 298 sq. ft
Counted as living area: Yes

Heated: Yes
Finished: Yes
Enclosed: Yes
Contiguous: Yes
Permitted: Yes
Wet space: No
Addition: No
Conversion: No

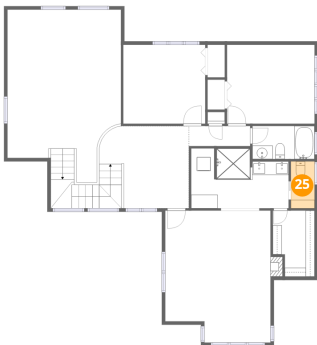
24 Floor 3 - Bath



Dimensions: 9'1" x 4'10"
Area: 44 sq. ft
Counted as living area: Yes

Heated: Yes
Finished: Yes
Enclosed: Yes
Contiguous: Yes
Permitted: Yes
Wet space: Yes
Addition: No
Conversion: No

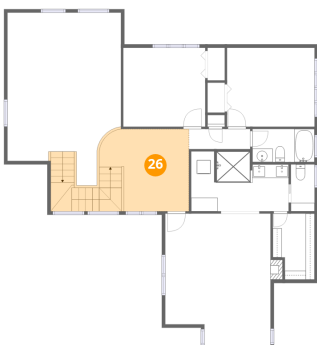
25 Floor 3 - Bath



Dimensions: 3'6" x 6'11"
Area: 24 sq. ft
Counted as living area: Yes

Heated: Yes
Finished: Yes
Enclosed: Yes
Contiguous: Yes
Permitted: Yes
Wet space: Yes
Addition: No
Conversion: No

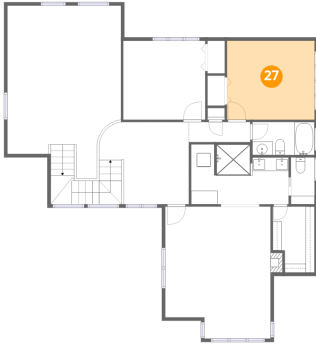
26 Floor 3 - Loft



Dimensions: 12'11" x 12'1"
Area: 156 sq. ft
Counted as living area: Yes

Heated: Yes
Finished: Yes
Enclosed: Yes
Contiguous: Yes
Permitted: Yes
Wet space: No
Addition: No
Conversion: No

27 Floor 3 - Bedroom



Dimensions: 12'10" x 11'7"
Area: 148 sq. ft
Counted as living area: Yes

Heated: Yes
Finished: Yes
Enclosed: Yes
Contiguous: Yes
Permitted: Yes
Wet space: No
Addition: No
Conversion: No

28 Floor 3 - Bedroom



Dimensions: 12'0" x 11'7"
Area: 139 sq. ft
Counted as living area: Yes

Heated: Yes
Finished: Yes
Enclosed: Yes
Contiguous: Yes
Permitted: Yes
Wet space: No
Addition: No
Conversion: No

29 Floor 3 - W.I.C.



Dimensions: 6'2" x 9'8"
Area: 59 sq. ft
Counted as living area: Yes

Heated: Yes
Finished: Yes
Enclosed: Yes
Contiguous: Yes
Permitted: Yes
Wet space: No
Addition: No
Conversion: No

30 Floor 3 - Bath



Dimensions: 14'4" x 8'9"
Area: 126 sq. ft
Counted as living area: Yes

Heated: Yes
Finished: Yes
Enclosed: Yes
Contiguous: Yes
Permitted: Yes
Wet space: Yes
Addition: No
Conversion: No