

## Home data report

6630 Hill Road, Sodus, Wayne County, New York, United States, 14551



**Total Area: 2244 sq. ft**

Basement: 0 sq. ft, 1st Floor: 729 sq. ft, 2nd Floor: 715 sq. ft, 3rd Floor: 800 sq. ft

Excluded: Basement 585 sq. ft, Fireplace 10 sq. ft, Garage 465 sq. ft, Walls: 265 sq. ft

## Property summary


 **4** Floors

 **4** Bedrooms

 **1** Bathrooms

Home data report

**6630 Hill Road, Sodus, Wayne County, New York, United States,  
14551**

 **2**  
Half baths

 **1**  
Garages

Home data report

6630 Hill Road, Sodus, Wayne County, New York, United States, 14551



## Room dimensions

Floor 1 Below grade

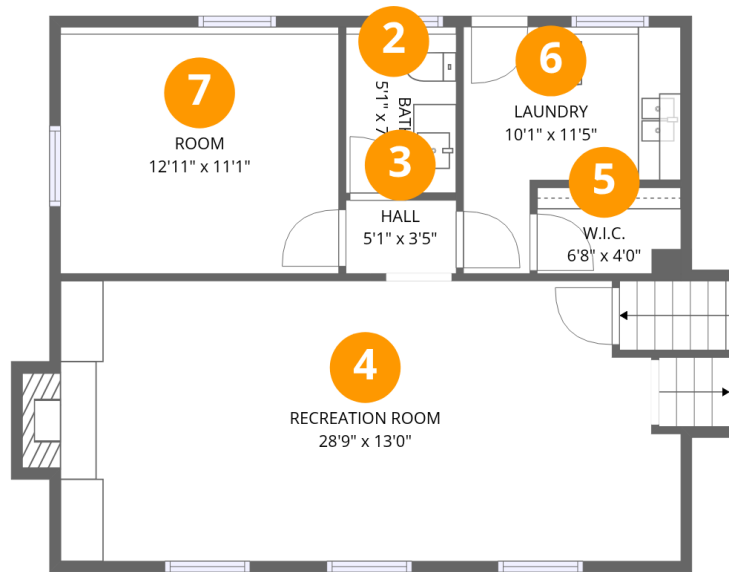
Total:0sqft

Excluded: 585sqft

#		Dimensions	sqft	Counted as living area
1	Basement	22'6" x 26'6"	596 sq. ft	No

Home data report

6630 Hill Road, Sodus, Wayne County, New York, United States, 14551



## Room dimensions

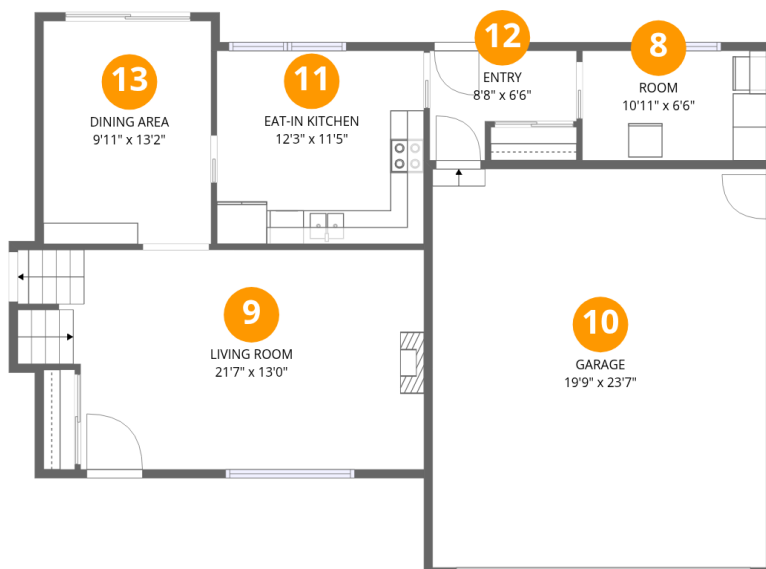
Floor 2

Total:729sqft Excluded: 10sqft

#		Dimensions	sqft	Counted as living area
2	Bath	5'1" x 7'4"	37 sq. ft	Yes
3	Hall	5'1" x 3'5"	17 sq. ft	Yes
4	Recreation Room	28'9" x 13'0"	373 sq. ft	Yes
5	W.I.C.	6'8" x 4'0"	26 sq. ft	Yes
6	Laundry	10'1" x 11'5"	115 sq. ft	Yes
7	Room	12'11" x 11'1"	143 sq. ft	Yes

## Home data report

6630 Hill Road, Sodus, Wayne County, New York, United States, 14551



## Room dimensions

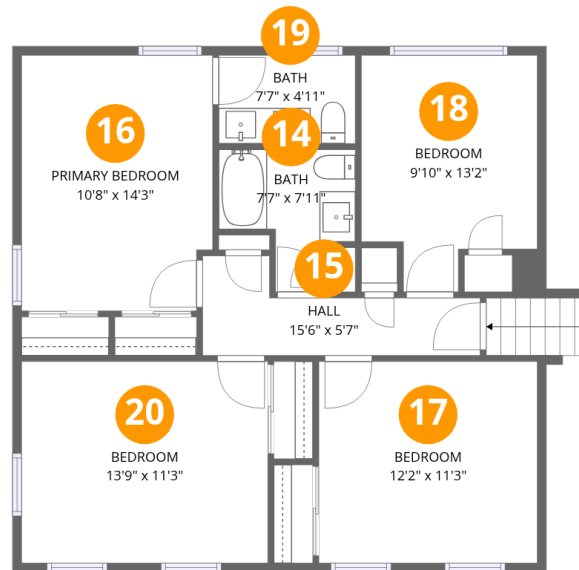
Floor 3

Total:715sqft Excluded: 465sqft

#		Dimensions	sqft	Counted as living area
8	Room	10'11" x 6'6"	70 sq. ft	Yes
9	Living Room	21'7" x 13'0"	280 sq. ft	Yes
10	Garage	19'9" x 23'7"	465 sq. ft	No
11	Eat-in Kitchen	12'3" x 11'5"	140 sq. ft	Yes
12	Entry	8'8" x 6'6"	56 sq. ft	Yes
13	Dining Area	9'11" x 13'2"	131 sq. ft	Yes

## Home data report

6630 Hill Road, Sodus, Wayne County, New York, United States, 14551



## Room dimensions

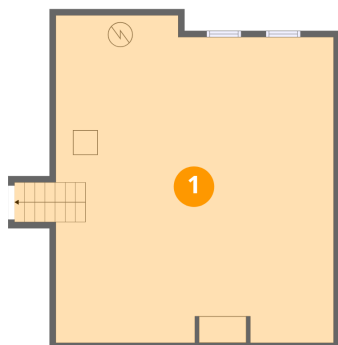
Floor 4

Total:800sqft

Excluded: 0sqft

#		Dimensions	sqft	Counted as living area
14	Bath	7'7" x 7'11"	60 sq. ft	Yes
15	Hall	15'6" x 5'7"	86 sq. ft	Yes
16	Primary Bedroom	10'8" x 14'3"	152 sq. ft	Yes
17	Bedroom	12'2" x 11'3"	137 sq. ft	Yes
18	Bedroom	9'10" x 13'2"	129 sq. ft	Yes
19	Bath	7'7" x 4'11"	37 sq. ft	Yes
20	Bedroom	13'9" x 11'3"	154 sq. ft	Yes

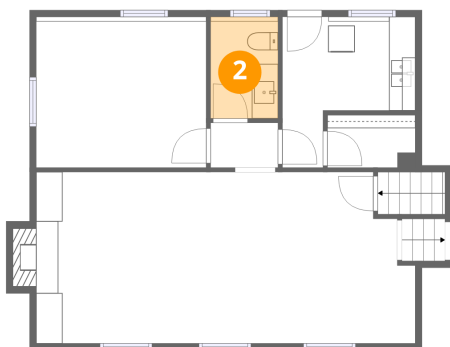
## 1 Floor 1 - Basement



Dimensions: 22'6" x 26'6"  
Area: 596 sq. ft  
Counted as living area: No

Heated: Yes  
Finished: No  
Enclosed: Yes  
Contiguous: Yes  
Permitted: Yes  
Wet space: No  
Addition: No  
Conversion: No

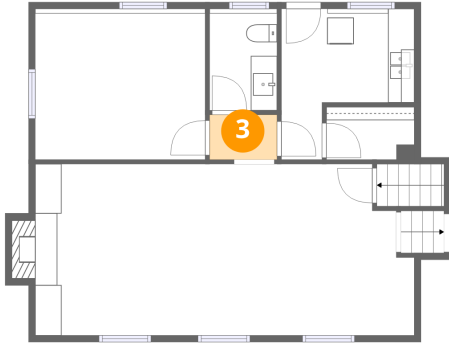
## 2 Floor 2 - Bath



Dimensions: 5'1" x 7'4"  
Area: 37 sq. ft  
Counted as living area: Yes

Heated: Yes  
Finished: Yes  
Enclosed: Yes  
Contiguous: Yes  
Permitted: Yes  
Wet space: Yes  
Addition: No  
Conversion: No

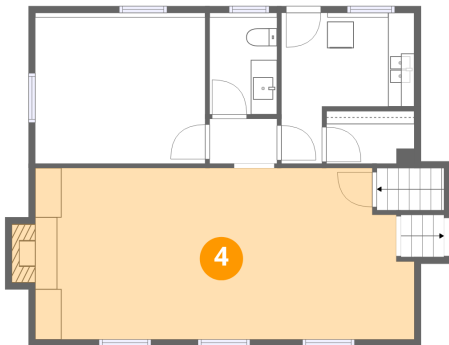
**3** Floor 2 - Hall



Dimensions: 5'1" x 3'5"  
Area: 17 sq. ft  
Counted as living area: Yes

Heated: Yes  
Finished: Yes  
Enclosed: Yes  
Contiguous: Yes  
Permitted: Yes  
Wet space: No  
Addition: No  
Conversion: No

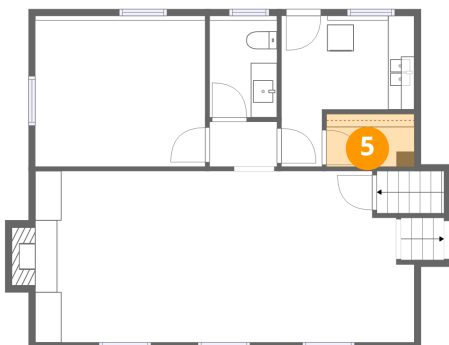
**4** Floor 2 - Recreation Room



Dimensions: 28'9" x 13'0"  
Area: 373 sq. ft  
Counted as living area: Yes

Heated: Yes  
Finished: Yes  
Enclosed: Yes  
Contiguous: Yes  
Permitted: Yes  
Wet space: No  
Addition: No  
Conversion: No

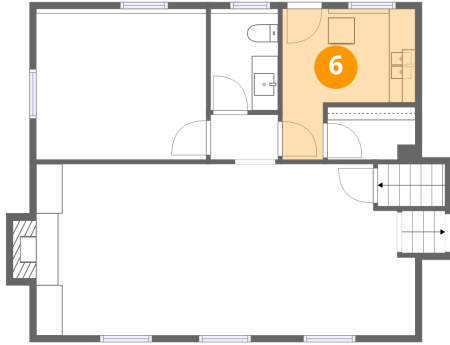
**5** Floor 2 - W.I.C.



Dimensions: 6'8" x 4'0"  
Area: 26 sq. ft  
Counted as living area: Yes

Heated: Yes  
Finished: Yes  
Enclosed: Yes  
Contiguous: Yes  
Permitted: Yes  
Wet space: No  
Addition: No  
Conversion: No

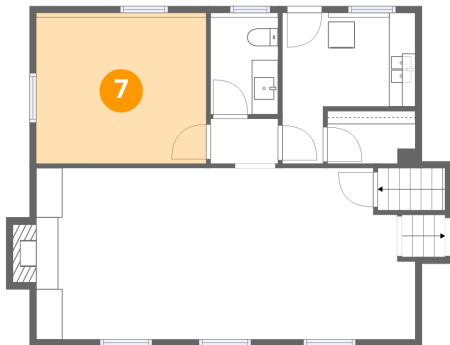
### 6 Floor 2 - Laundry



Dimensions: 10'1" x 11'5"  
Area: 115 sq. ft  
Counted as living area: Yes

Heated: Yes  
Finished: Yes  
Enclosed: Yes  
Contiguous: Yes  
Permitted: Yes  
Wet space: No  
Addition: No  
Conversion: No

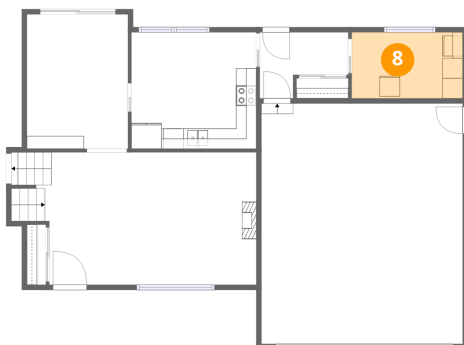
### 7 Floor 2 - Room



Dimensions: 12'11" x 11'1"  
Area: 143 sq. ft  
Counted as living area: Yes

Heated: Yes  
Finished: Yes  
Enclosed: Yes  
Contiguous: Yes  
Permitted: Yes  
Wet space: No  
Addition: No  
Conversion: No

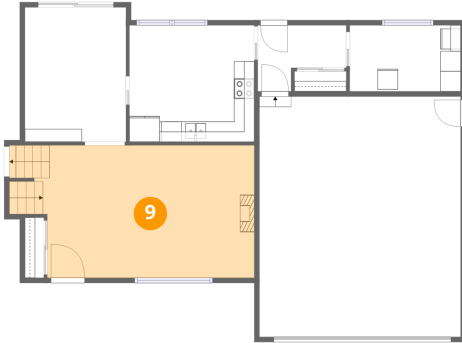
### 8 Floor 3 - Room



Dimensions: 10'11" x 6'6"  
Area: 70 sq. ft  
Counted as living area: Yes

Heated: Yes  
Finished: Yes  
Enclosed: Yes  
Contiguous: Yes  
Permitted: Yes  
Wet space: No  
Addition: No  
Conversion: No

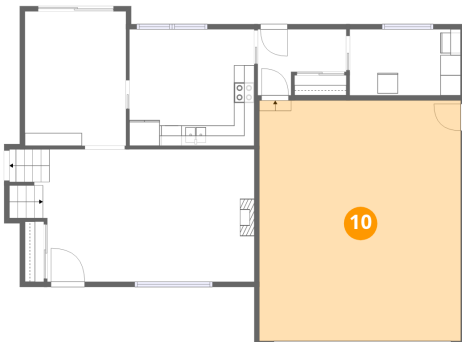
**9** Floor 3 - Living Room



Dimensions: 21'7" x 13'0"  
Area: 280 sq. ft  
Counted as living area: Yes

Heated: Yes  
Finished: Yes  
Enclosed: Yes  
Contiguous: Yes  
Permitted: Yes  
Wet space: No  
Addition: No  
Conversion: No

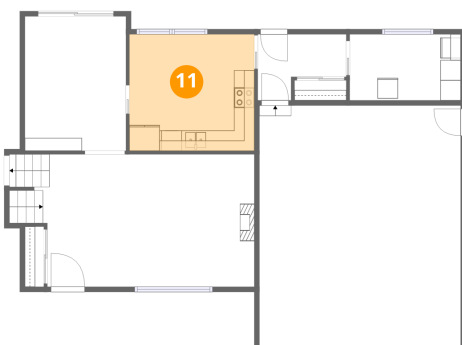
**10** Floor 3 - Garage



Dimensions: 19'9" x 23'7"  
Area: 465 sq. ft  
Counted as living area: No

Heated: No  
Finished: No  
Enclosed: Yes  
Contiguous: Yes  
Permitted: Yes  
Wet space: No  
Addition: No  
Conversion: No

**11** Floor 3 - Eat-in Kitchen



Dimensions: 12'3" x 11'5"  
Area: 140 sq. ft  
Counted as living area: Yes

Heated: Yes  
Finished: Yes  
Enclosed: Yes  
Contiguous: Yes  
Permitted: Yes  
Wet space: No  
Addition: No  
Conversion: No

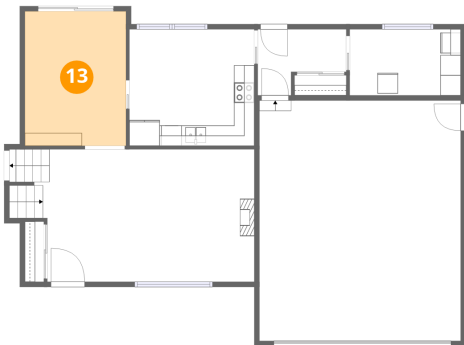
### 12 Floor 3 - Entry



Dimensions: 8'8" x 6'6"  
Area: 56 sq. ft  
Counted as living area: Yes

Heated: Yes  
Finished: Yes  
Enclosed: Yes  
Contiguous: Yes  
Permitted: Yes  
Wet space: No  
Addition: No  
Conversion: No

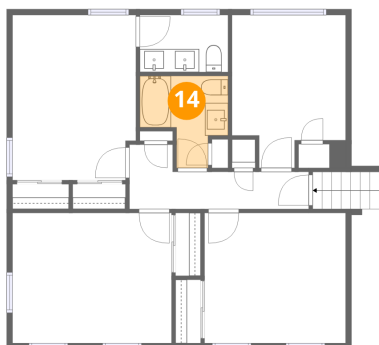
### 13 Floor 3 - Dining Area



Dimensions: 9'11" x 13'2"  
Area: 131 sq. ft  
Counted as living area: Yes

Heated: Yes  
Finished: Yes  
Enclosed: Yes  
Contiguous: Yes  
Permitted: Yes  
Wet space: No  
Addition: No  
Conversion: No

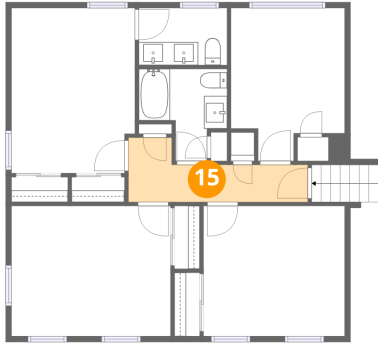
### 14 Floor 4 - Bath



Dimensions: 7'7" x 7'11"  
Area: 60 sq. ft  
Counted as living area: Yes

Heated: Yes  
Finished: Yes  
Enclosed: Yes  
Contiguous: Yes  
Permitted: Yes  
Wet space: Yes  
Addition: No  
Conversion: No

**15** Floor 4 - Hall



Dimensions: 15'6" x 5'7"  
Area: 86 sq. ft  
Counted as living area: Yes

Heated: Yes  
Finished: Yes  
Enclosed: Yes  
Contiguous: Yes  
Permitted: Yes  
Wet space: No  
Addition: No  
Conversion: No

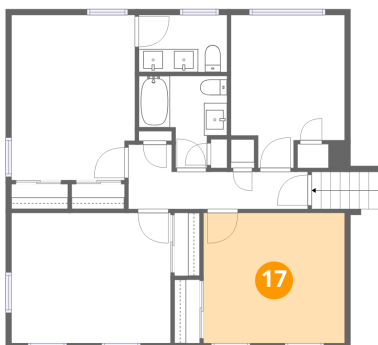
**16** Floor 4 - Primary Bedroom



Dimensions: 10'8" x 14'3"  
Area: 152 sq. ft  
Counted as living area: Yes

Heated: Yes  
Finished: Yes  
Enclosed: Yes  
Contiguous: Yes  
Permitted: Yes  
Wet space: No  
Addition: No  
Conversion: No

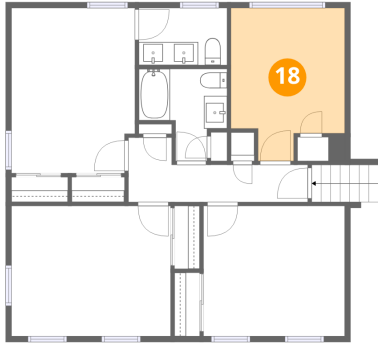
**17** Floor 4 - Bedroom



Dimensions: 12'2" x 11'3"  
Area: 137 sq. ft  
Counted as living area: Yes

Heated: Yes  
Finished: Yes  
Enclosed: Yes  
Contiguous: Yes  
Permitted: Yes  
Wet space: No  
Addition: No  
Conversion: No

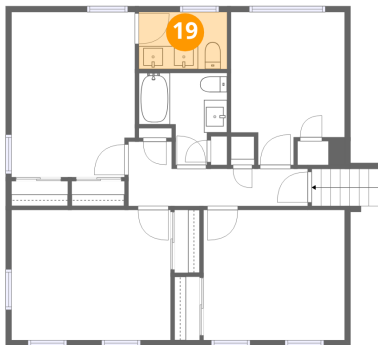
**18** Floor 4 - Bedroom



Dimensions: 9'10" x 13'2"  
Area: 129 sq. ft  
Counted as living area: Yes

Heated: Yes  
Finished: Yes  
Enclosed: Yes  
Contiguous: Yes  
Permitted: Yes  
Wet space: No  
Addition: No  
Conversion: No

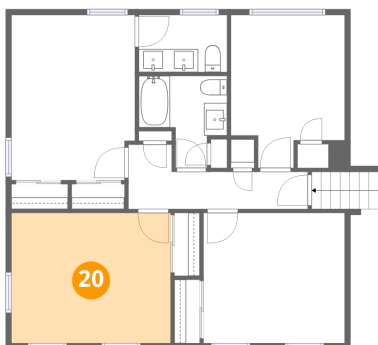
**19** Floor 4 - Bath



Dimensions: 7'7" x 4'11"  
Area: 37 sq. ft  
Counted as living area: Yes

Heated: Yes  
Finished: Yes  
Enclosed: Yes  
Contiguous: Yes  
Permitted: Yes  
Wet space: Yes  
Addition: No  
Conversion: No

**20** Floor 4 - Bedroom



Dimensions: 13'9" x 11'3"  
Area: 154 sq. ft  
Counted as living area: Yes

Heated: Yes  
Finished: Yes  
Enclosed: Yes  
Contiguous: Yes  
Permitted: Yes  
Wet space: No  
Addition: No  
Conversion: No