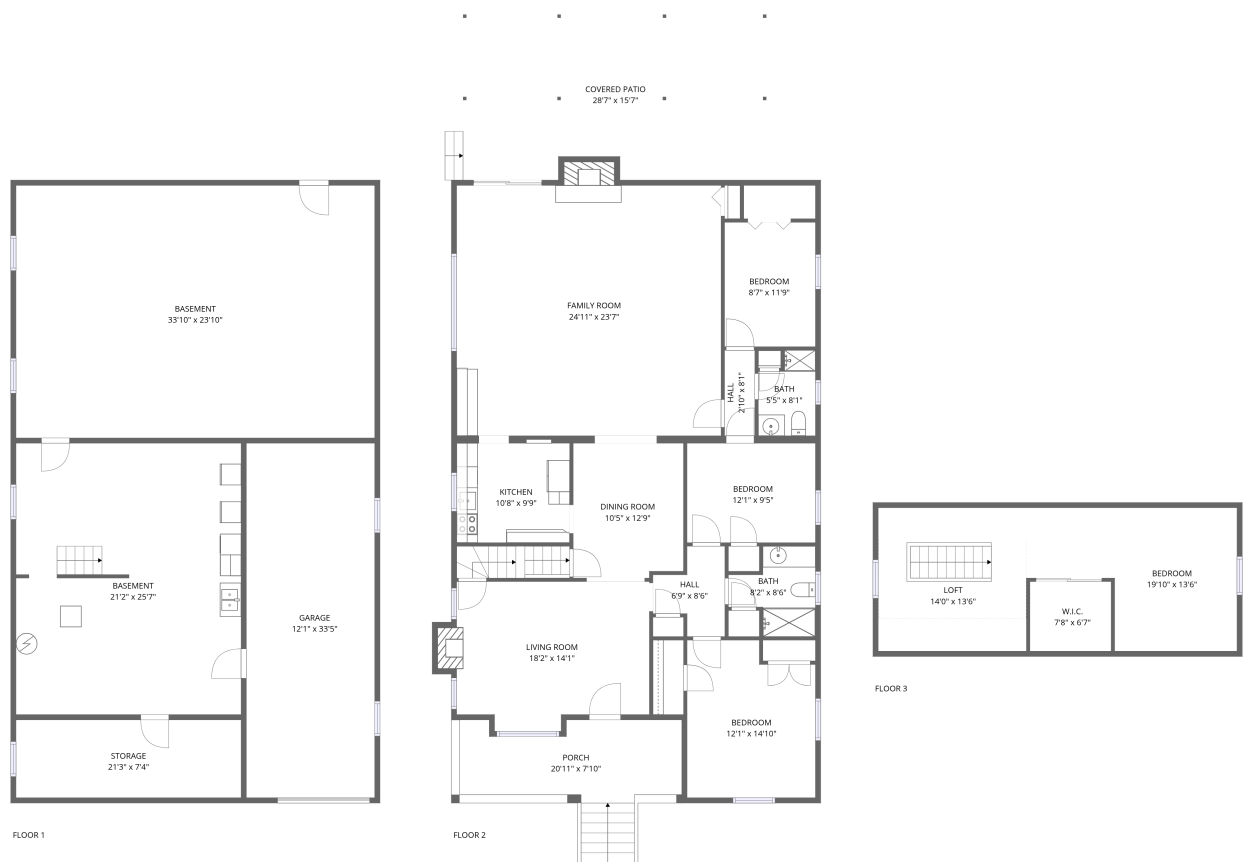


Home report

143 Elwood Street Northwest, North Hills, Hollins, Roanoke,
Roanoke County, Virginia, United States, 24019

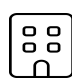


Total Area: 2051 sq. ft

Floor 1: 0 sq. ft, Floor 2: 1797 sq. ft, Floor 3: 254 sq. ft

Excluded: Storage 166 sq. ft, Garage 404 sq. ft, Basement 1359 sq. ft, Porch 140 sq. ft, Covered patio 434 sq. ft, Fireplace 22 sq. ft, Low ceiling 204 sq. ft, Walls: 253 sq. ft

Property summary

 **3** Floors

 **4** Bedrooms

 **2** Bathrooms

 **1** Garages

143 Elwood Street Northwest, North Hills, Hollins, Roanoke,
Roanoke County, Virginia, United States, 24019



Room dimensions

Floor 1 Total:0sqft Excluded: 1929sqft

| # | | Max Dimensions | sqft | Included |
|---|----------|-----------------|------------|----------|
| 1 | Storage | 21'3" x 7'4" | 156 sq. ft | No |
| 2 | Basement | 33'10" x 23'10" | 805 sq. ft | No |
| 3 | Basement | 21'2" x 25'7" | 543 sq. ft | No |
| 4 | Garage | 12'1" x 33'5" | 404 sq. ft | No |

Home report

143 Elwood Street Northwest, North Hills, Hollins, Roanoke,
Roanoke County, Virginia, United States, 24019



Room dimensions

Floor 2Total:1797sqft Excluded: 596sqft

| # | | Max Dimensions | sqft | Included |
|----|---------------|----------------|------------|----------|
| 5 | Hall | 2'10" x 8'1" | 23 sq. ft | Yes |
| 6 | Covered Patio | 28'7" x 15'7" | 434 sq. ft | No |
| 7 | Living Room | 18'2" x 14'1" | 245 sq. ft | Yes |
| 8 | Kitchen | 10'8" x 9'9" | 101 sq. ft | Yes |
| 9 | Bath | 5'5" x 8'1" | 38 sq. ft | Yes |
| 10 | Bedroom | 12'1" x 9'5" | 114 sq. ft | Yes |
| 11 | Bedroom | 8'7" x 11'9" | 100 sq. ft | Yes |
| 12 | Family Room | 24'11" x 23'7" | 599 sq. ft | Yes |
| 13 | Bath | 8'2" x 8'6" | 52 sq. ft | Yes |
| 14 | Porch | 20'11" x 7'10" | 140 sq. ft | No |
| 15 | Bedroom | 12'1" x 14'10" | 168 sq. ft | Yes |

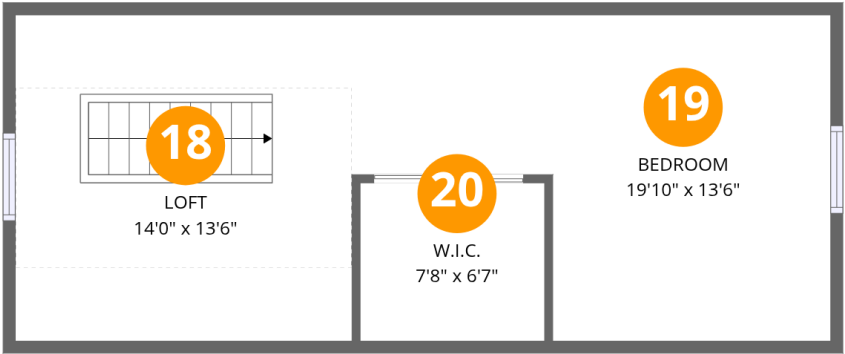
Home report

143 Elwood Street Northwest, North Hills, Hollins, Roanoke,
Roanoke County, Virginia, United States, 24019

| # | | Max Dimensions | sqft | Included |
|----|-------------|----------------|------------|----------|
| 16 | Dining Room | 10'5" x 12'9" | 130 sq. ft | Yes |
| 17 | Hall | 6'9" x 8'6" | 42 sq. ft | Yes |

Home report

143 Elwood Street Northwest, North Hills, Hollins, Roanoke,
Roanoke County, Virginia, United States, 24019



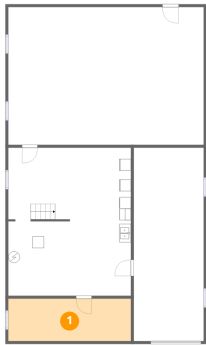
Room dimensions

Floor 3 Total:254sqft Excluded: 204sqft

| # | | Max Dimensions | sqft | Included |
|----|---------|----------------|------------|----------|
| 18 | Loft | 14'0" x 13'6" | 105 sq. ft | Yes |
| 19 | Bedroom | 19'10" x 13'6" | 117 sq. ft | Yes |
| 20 | W.I.C. | 7'8" x 6'7" | 27 sq. ft | Yes |

143 Elwood Street Northwest, North Hills, Hollins, Roanoke,
Roanoke County, Virginia, United States, 24019

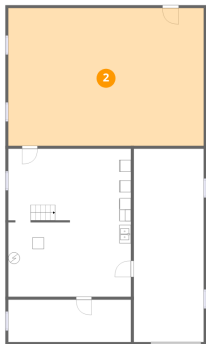
1 Floor 1 - Storage



Max Dimensions: 21'3" x 7'4"
Calculated Area: 156 sq. ft
Included: No

Heated: No
Finished: No
Enclosed: No
Contiguous: Yes
Permitted: Yes
Wet space: No
Addition: No
Conversion: No

2 Floor 1 - Basement



Max Dimensions: 33'10" x 23'10"
Calculated Area: 805 sq. ft
Included: No

Heated: Yes
Finished: No
Enclosed: Yes
Contiguous: Yes
Permitted: Yes
Wet space: No
Addition: No
Conversion: No

143 Elwood Street Northwest, North Hills, Hollins, Roanoke,
Roanoke County, Virginia, United States, 24019

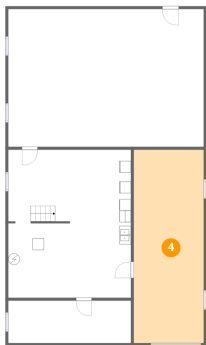
3 Floor 1 - Basement



Max Dimensions: 21'2" x 25'7"
Calculated Area: 543 sq. ft
Included: No

Heated: Yes
Finished: No
Enclosed: Yes
Contiguous: Yes
Permitted: Yes
Wet space: No
Addition: No
Conversion: No

4 Floor 1 - Garage



Max Dimensions: 12'1" x 33'5"
Calculated Area: 404 sq. ft
Included: No

Heated: No
Finished: No
Enclosed: Yes
Contiguous: Yes
Permitted: Yes
Wet space: No
Addition: No
Conversion: No

5 Floor 2 - Hall



Max Dimensions: 2'10" x 8'1"
Calculated Area: 23 sq. ft
Included: Yes

Heated: Yes
Finished: Yes
Enclosed: Yes
Contiguous: Yes
Permitted: Yes
Wet space: No
Addition: No
Conversion: No

143 Elwood Street Northwest, North Hills, Hollins, Roanoke,
Roanoke County, Virginia, United States, 24019

6 Floor 2 - Covered Patio



Max Dimensions: 28'7" x 15'7"
Calculated Area: 434 sq. ft
Included: No

Heated: No
Finished: No
Enclosed: No
Contiguous: Yes
Permitted: Yes
Wet space: No
Addition: No
Conversion: No

7 Floor 2 - Living Room



Max Dimensions: 18'2" x 14'1"
Calculated Area: 245 sq. ft
Included: Yes

Heated: Yes
Finished: Yes
Enclosed: Yes
Contiguous: Yes
Permitted: Yes
Wet space: No
Addition: No
Conversion: No

8 Floor 2 - Kitchen



Max Dimensions: 10'8" x 9'9"
Calculated Area: 101 sq. ft
Included: Yes

Heated: Yes
Finished: Yes
Enclosed: Yes
Contiguous: Yes
Permitted: Yes
Wet space: No
Addition: No
Conversion: No

143 Elwood Street Northwest, North Hills, Hollins, Roanoke,
Roanoke County, Virginia, United States, 24019

9 Floor 2 - Bath



Max Dimensions: 5'5" x 8'1"
Calculated Area: 38 sq. ft
Included: Yes

Heated: Yes
Finished: Yes
Enclosed: Yes
Contiguous: Yes
Permitted: Yes
Wet space: Yes
Addition: No
Conversion: No

10 Floor 2 - Bedroom



Max Dimensions: 12'1" x 9'5"
Calculated Area: 114 sq. ft
Included: Yes

Heated: Yes
Finished: Yes
Enclosed: Yes
Contiguous: Yes
Permitted: Yes
Wet space: No
Addition: No
Conversion: No

11 Floor 2 - Bedroom



Max Dimensions: 8'7" x 11'9"
Calculated Area: 100 sq. ft
Included: Yes

Heated: Yes
Finished: Yes
Enclosed: Yes
Contiguous: Yes
Permitted: Yes
Wet space: No
Addition: No
Conversion: No

143 Elwood Street Northwest, North Hills, Hollins, Roanoke,
Roanoke County, Virginia, United States, 24019

12 Floor 2 - Family Room



Max Dimensions: 24'11" x 23'7"
Calculated Area: 599 sq. ft
Included: Yes

Heated: Yes
Finished: Yes
Enclosed: Yes
Contiguous: Yes
Permitted: Yes
Wet space: No
Addition: No
Conversion: No

13 Floor 2 - Bath



Max Dimensions: 8'2" x 8'6"
Calculated Area: 52 sq. ft
Included: Yes

Heated: Yes
Finished: Yes
Enclosed: Yes
Contiguous: Yes
Permitted: Yes
Wet space: Yes
Addition: No
Conversion: No

14 Floor 2 - Porch



Max Dimensions: 20'11" x 7'10"
Calculated Area: 140 sq. ft
Included: No

Heated: No
Finished: No
Enclosed: No
Contiguous: Yes
Permitted: Yes
Wet space: No
Addition: No
Conversion: No

143 Elwood Street Northwest, North Hills, Hollins, Roanoke,
Roanoke County, Virginia, United States, 24019

15 Floor 2 - Bedroom



Max Dimensions: 12'1" x 14'10"
Calculated Area: 168 sq. ft
Included: Yes

Heated: Yes
Finished: Yes
Enclosed: Yes
Contiguous: Yes
Permitted: Yes
Wet space: No
Addition: No
Conversion: No

16 Floor 2 - Dining Room



Max Dimensions: 10'5" x 12'9"
Calculated Area: 130 sq. ft
Included: Yes

Heated: Yes
Finished: Yes
Enclosed: Yes
Contiguous: Yes
Permitted: Yes
Wet space: No
Addition: No
Conversion: No

17 Floor 2 - Hall



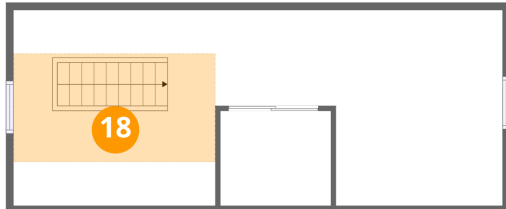
Max Dimensions: 6'9" x 8'6"
Calculated Area: 42 sq. ft
Included: Yes

Heated: Yes
Finished: Yes
Enclosed: Yes
Contiguous: Yes
Permitted: Yes
Wet space: No
Addition: No
Conversion: No

Home report

143 Elwood Street Northwest, North Hills, Hollins, Roanoke,
Roanoke County, Virginia, United States, 24019

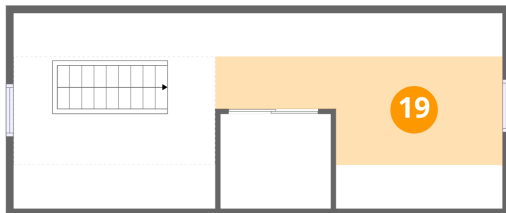
18 Floor 3 - Loft



Max Dimensions: 14'0" x 13'6"
Calculated Area: 105 sq. ft
Included: Yes

Heated: Yes
Finished: Yes
Enclosed: Yes
Contiguous: Yes
Permitted: Yes
Wet space: No
Addition: No
Conversion: No

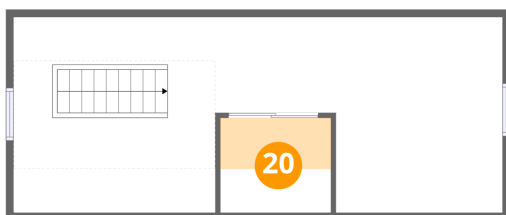
19 Floor 3 - Bedroom



Max Dimensions: 19'10" x 13'6"
Calculated Area: 117 sq. ft
Included: Yes

Heated: Yes
Finished: Yes
Enclosed: Yes
Contiguous: Yes
Permitted: Yes
Wet space: No
Addition: No
Conversion: No

20 Floor 3 - W.I.C.



Max Dimensions: 7'8" x 6'7"
Calculated Area: 27 sq. ft
Included: Yes

Heated: Yes
Finished: Yes
Enclosed: Yes
Contiguous: Yes
Permitted: Yes
Wet space: No
Addition: No
Conversion: No