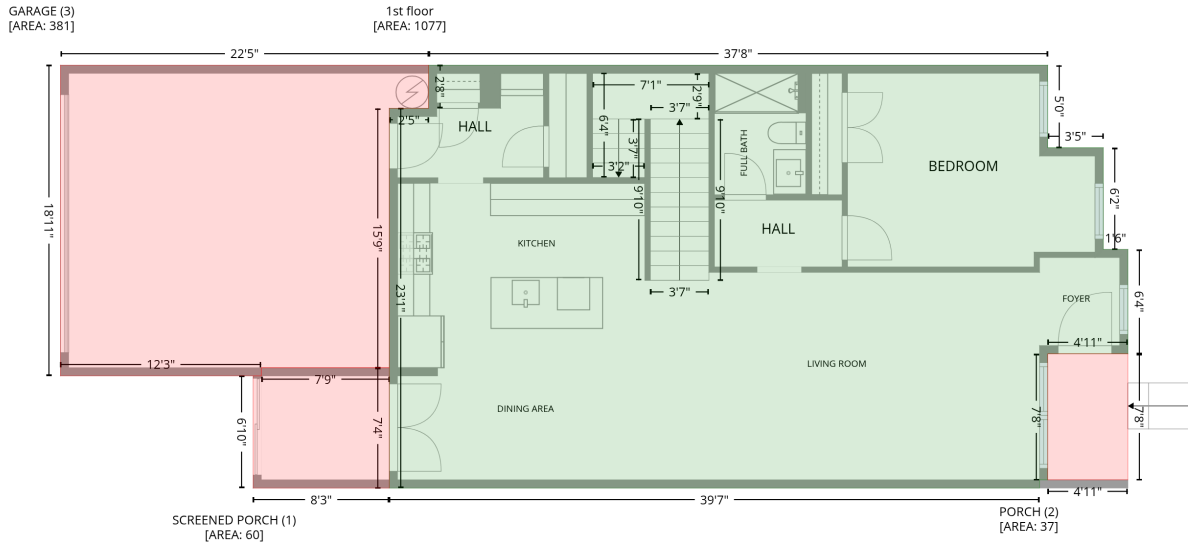


1125 Treetop Meadow Lane, Wake Forest, Wake County, North Carolina, United States, 27587

Gross Living Area: 2529 sq. ft

Level 1

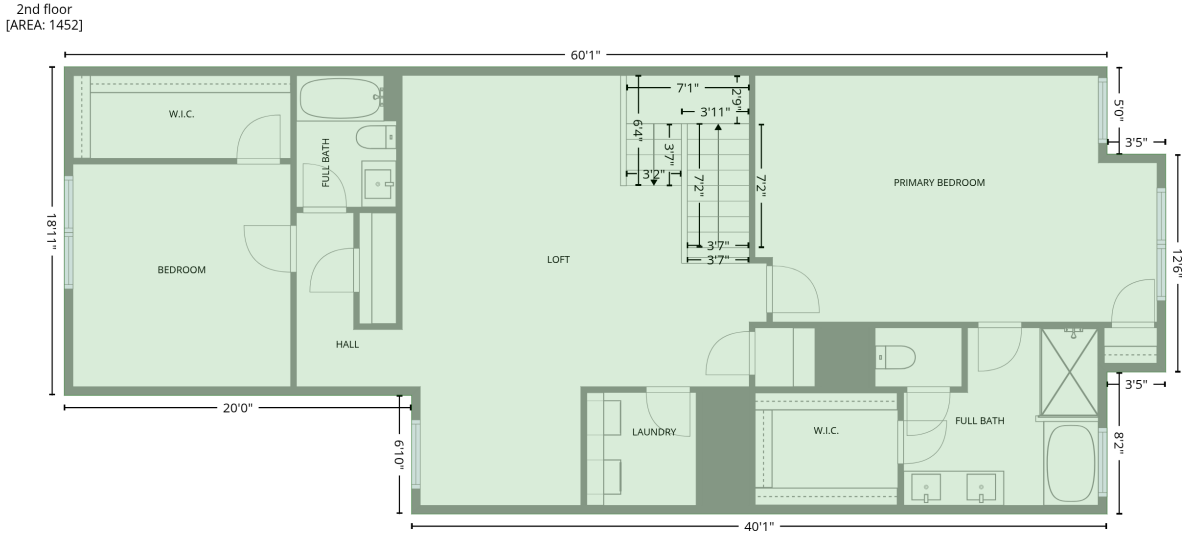


Space	Area (sq. ft)	Calculation <small>Coordinate Polygon Area Algorithm using inches</small>
1st floor (Living area)	1077	$-\left((555.1 + 555.1) * (195.1 - 255.5) + (555.1 + 595.6) * (255.5 - 255.5) + (595.6 + 595.6) * (255.5 - 329.7) + (595.6 + 613.6) * (329.7 - 329.7) + (613.6 + 613.6) * (329.7 - 406) + (613.6 + 555.1) * (406 - 406) + (555.1 + 555.1) * (406 - 498) + (555.1 + 549.1) * (498 - 498) + (549.1 + 549.1) * (498 - 504) + (549.1 + 74.1) * (504 - 504) + (74.1 + 74.1) * (504 - 226.7) + (74.1 + 102.9) * (226.7 - 226.7) + (102.9 + 102.9) * (226.7 - 195.1) + (102.9 + 555.1) * (195.1 - 195.1)\right) * 0.5 * 0.00694$
SCREENED PORCH (1) (Non-living area)	60	$-\left((74.1 + 74.1) * (416.1 - 504) + (74.1 + -25.3) * (504 - 504) + (-25.3 + -25.3) * (504 - 422.1) + (-25.3 + -19.3) * (422.1 - 422.1) + (-19.3 + -19.3) * (422.1 - 416.1) + (-19.3 + 74.1) * (416.1 - 416.1)\right) * 0.5 * 0.00694$
PORCH (Non-living area)	37	$-\left((613.6 + 613.6) * (406 - 498) + (613.6 + 555.1) * (498 - 498) + (555.1 + 555.1) * (498 - 406) + (555.1 + 613.6) * (406 - 406)\right) * 0.5 * 0.00694$
GARAGE (Non-living area)	381	$-\left((102.9 + 102.9) * (195.1 - 226.7) + (102.9 + 74.1) * (226.7 - 226.7) + (74.1 + 74.1) * (226.7 - 416.1) + (74.1 + -19.3) * (416.1 - 416.1) + (-19.3 + -19.3) * (416.1 - 422.1) + (-19.3 + -166) * (422.1 - 422.1) + (-166 + -166) * (422.1 - 195.1) + (-166 + 102.9) * (195.1 - 195.1)\right) * 0.5 * 0.00694$

1125 Treetop Meadow Lane, Wake Forest, Wake County, North Carolina, United States, 27587

Gross Living Area: 2529 sq. ft

Level 2



Space	Area (sq. ft)	Calculation <small>Coordinate Polygon Area Algorithm using inches</small>
2nd floor (Living area)	1452	$ \begin{aligned} & -((555.1 + 555.1) * (195.1 - 255.5) + (555.1 + 595.6) * (255.5 - 255.5) + (595.6 + 595.6) * (255.5 - 406) \\ & + (595.6 + 555.1) * (406 - 406) + (555.1 + 555.1) * (406 - 504) + (555.1 + 74.1) * (504 - 504) \\ & + (74.1 + 74.1) * (504 - 422.1) + (74.1 + -166) * (422.1 - 422.1) + (-166 + -166) * (422.1 - 195.1) + \\ & (-166 + 555.1) * (195.1 - 195.1)) * 0.5 * 0.00694 \end{aligned} $