

## Home data report

# 18 Chesterfield Rd, Brampton, ON, CA



**Total Area: 1851 sq. ft**


Basement: 327 sq. ft, 1st Floor: 867 sq. ft, 2nd Floor: 657 sq. ft

Excluded: Basement 264 sq. ft, Garage 187 sq. ft, Porch 201 sq. ft, Fireplace 16 sq. ft,

Walls: 196 sq. ft

## Property summary

 **3** Floors

 **4** Bedrooms

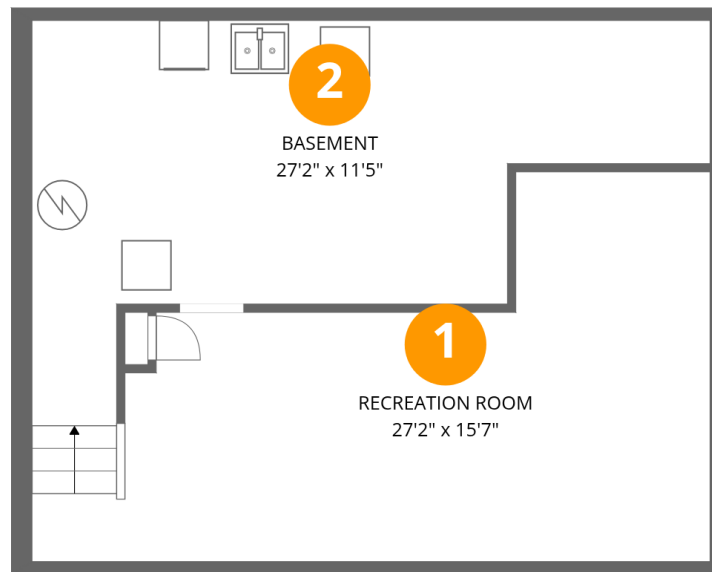
 **1** Bathrooms

Home data report

# 18 Chesterfield Rd, Brampton, ON, CA

 **1**  
Half baths

 **1**  
Garages



## Room dimensions

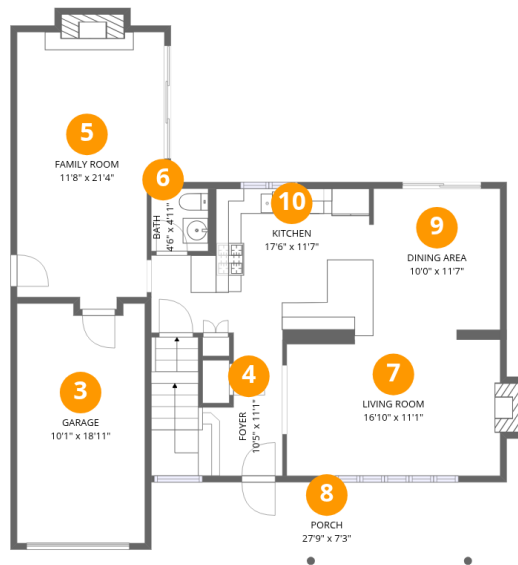
Floor 1 Below grade

Total: 327 sqft

Excluded: 264 sqft

#		Dimensions	sqft	Counted as living area
1	Recreation Room	27'2" x 15'7"	313 sq. ft	Yes
2	Basement	27'2" x 11'5"	264 sq. ft	No

# 18 Chesterfield Rd, Brampton, ON, CA



## Room dimensions

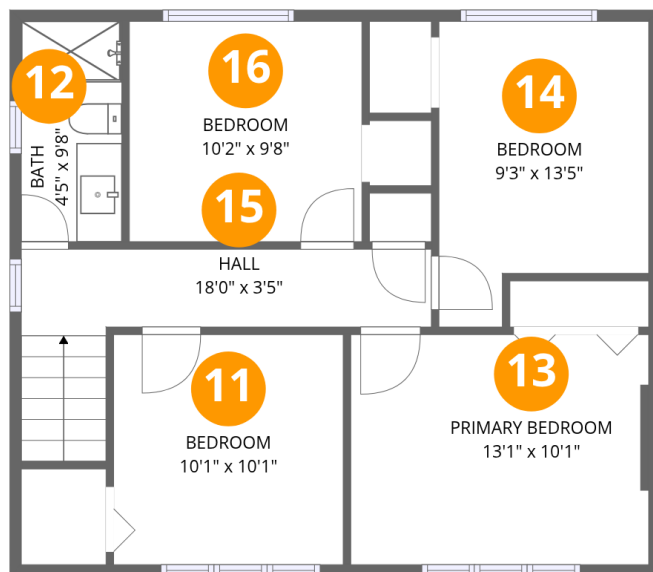
Floor 2

Total:867sqft

Excluded: 404sqft

#		Dimensions	sqft	Counted as living area
3	Garage	10'1" x 18'11"	187 sq. ft	No
4	Foyer	10'5" x 11'1"	98 sq. ft	Yes
5	Family Room	11'8" x 21'4"	241 sq. ft	Yes
6	Bath	4'6" x 4'11"	22 sq. ft	Yes
7	Living Room	16'10" x 11'1"	191 sq. ft	Yes
8	Porch	27'9" x 7'3"	201 sq. ft	No
9	Dining Area	10'0" x 11'7"	116 sq. ft	Yes
10	Kitchen	17'6" x 11'7"	174 sq. ft	Yes

# 18 Chesterfield Rd, Brampton, ON, CA



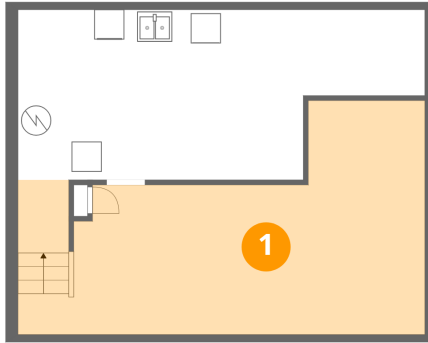
## Room dimensions

Floor 3

Total:657sqft Excluded: 0sqft

#		Dimensions	sqft	Counted as living area
11	Bedroom	10'1" x 10'1"	102 sq. ft	Yes
12	Bath	4'5" x 9'8"	43 sq. ft	Yes
13	Primary Bedroom	13'1" x 10'1"	132 sq. ft	Yes
14	Bedroom	9'3" x 13'5"	108 sq. ft	Yes
15	Hall	18'0" x 3'5"	83 sq. ft	Yes
16	Bedroom	10'2" x 9'8"	99 sq. ft	Yes

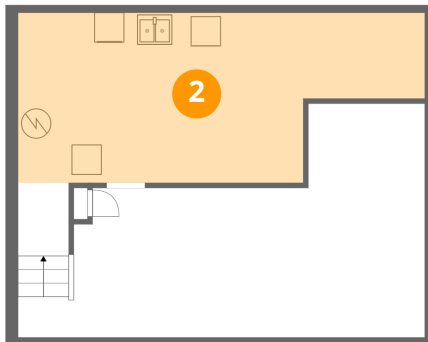
## 1 Floor 1 - Recreation Room



Dimensions: 27'2" x 15'7"  
Area: 313 sq. ft  
Counted as living area: No

Heated: Yes  
Finished: Yes  
Enclosed: Yes  
Contiguous: No  
Permitted: Yes  
Wet space: No  
Addition: No  
Conversion: No

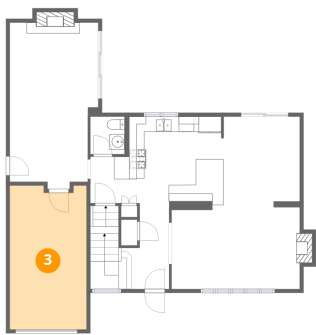
## 2 Floor 1 - Basement



Dimensions: 27'2" x 11'5"  
Area: 264 sq. ft  
Counted as living area: No

Heated: Yes  
Finished: No  
Enclosed: Yes  
Contiguous: Yes  
Permitted: Yes  
Wet space: No  
Addition: No  
Conversion: No

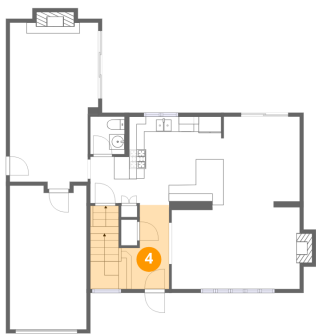
### 3 Floor 2 - Garage



Dimensions: 10'1" x 18'11"  
Area: 187 sq. ft  
Counted as living area: No

Heated: No  
Finished: No  
Enclosed: Yes  
Contiguous: Yes  
Permitted: Yes  
Wet space: No  
Addition: No  
Conversion: No

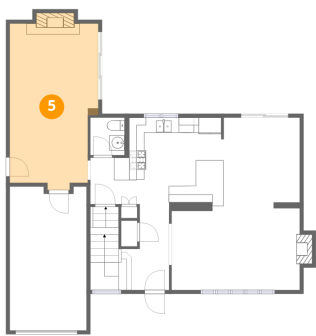
### 4 Floor 2 - Foyer



Dimensions: 10'5" x 11'1"  
Area: 98 sq. ft  
Counted as living area: Yes

Heated: Yes  
Finished: Yes  
Enclosed: Yes  
Contiguous: Yes  
Permitted: Yes  
Wet space: No  
Addition: No  
Conversion: No

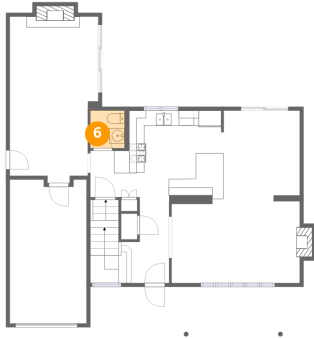
### 5 Floor 2 - Family Room



Dimensions: 11'8" x 21'4"  
Area: 241 sq. ft  
Counted as living area: Yes

Heated: Yes  
Finished: Yes  
Enclosed: Yes  
Contiguous: Yes  
Permitted: Yes  
Wet space: No  
Addition: No  
Conversion: No

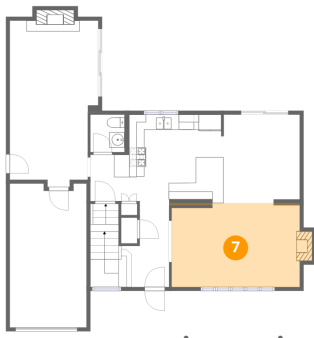
## 6 Floor 2 - Bath



Dimensions: 4'6" x 4'11"  
Area: 22 sq. ft  
Counted as living area: Yes

Heated: Yes  
Finished: Yes  
Enclosed: Yes  
Contiguous: Yes  
Permitted: Yes  
Wet space: Yes  
Addition: No  
Conversion: No

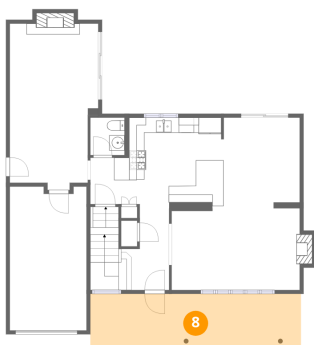
## 7 Floor 2 - Living Room



Dimensions: 16'10" x 11'1"  
Area: 191 sq. ft  
Counted as living area: Yes

Heated: Yes  
Finished: Yes  
Enclosed: Yes  
Contiguous: Yes  
Permitted: Yes  
Wet space: No  
Addition: No  
Conversion: No

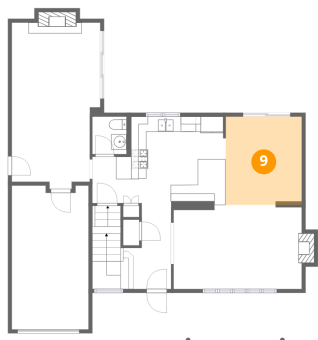
## 8 Floor 2 - Porch



Dimensions: 27'9" x 7'3"  
Area: 201 sq. ft  
Counted as living area: No

Heated: No  
Finished: No  
Enclosed: No  
Contiguous: Yes  
Permitted: Yes  
Wet space: No  
Addition: No  
Conversion: No

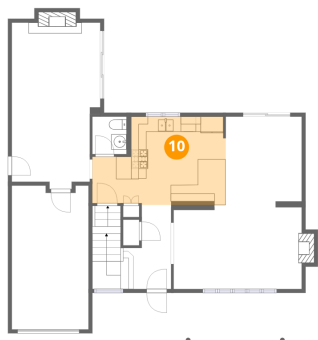
### 9 Floor 2 - Dining Area



Dimensions: 10'0" x 11'7"  
Area: 116 sq. ft  
Counted as living area: Yes

Heated: Yes  
Finished: Yes  
Enclosed: Yes  
Contiguous: Yes  
Permitted: Yes  
Wet space: No  
Addition: No  
Conversion: No

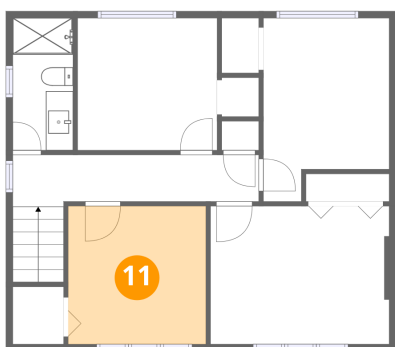
### 10 Floor 2 - Kitchen



Dimensions: 17'6" x 11'7"  
Area: 174 sq. ft  
Counted as living area: Yes

Heated: Yes  
Finished: Yes  
Enclosed: Yes  
Contiguous: Yes  
Permitted: Yes  
Wet space: No  
Addition: No  
Conversion: No

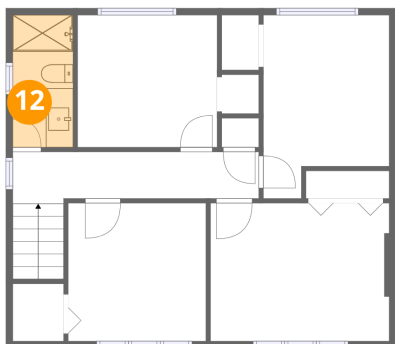
### 11 Floor 3 - Bedroom



Dimensions: 10'1" x 10'1"  
Area: 102 sq. ft  
Counted as living area: Yes

Heated: Yes  
Finished: Yes  
Enclosed: Yes  
Contiguous: Yes  
Permitted: Yes  
Wet space: No  
Addition: No  
Conversion: No

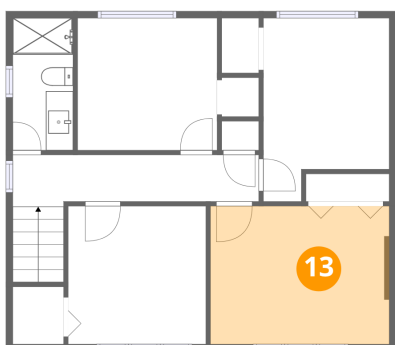
### 12 Floor 3 - Bath



Dimensions: 4'5" x 9'8"  
Area: 43 sq. ft  
Counted as living area: Yes

Heated: Yes  
Finished: Yes  
Enclosed: Yes  
Contiguous: Yes  
Permitted: Yes  
Wet space: Yes  
Addition: No  
Conversion: No

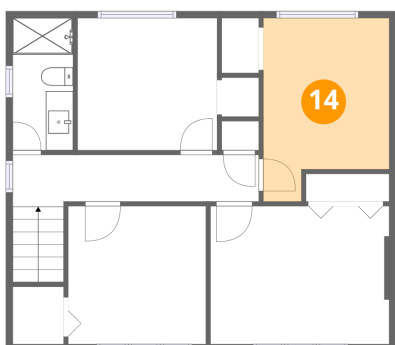
### 13 Floor 3 - Primary Bedroom



Dimensions: 13'1" x 10'1"  
Area: 132 sq. ft  
Counted as living area: Yes

Heated: Yes  
Finished: Yes  
Enclosed: Yes  
Contiguous: Yes  
Permitted: Yes  
Wet space: No  
Addition: No  
Conversion: No

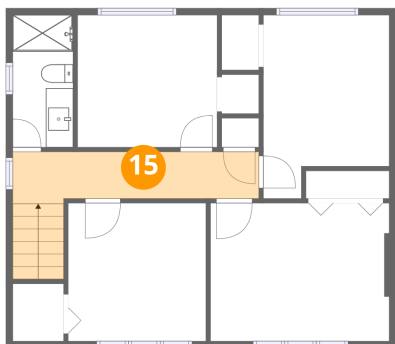
### 14 Floor 3 - Bedroom



Dimensions: 9'3" x 13'5"  
Area: 108 sq. ft  
Counted as living area: Yes

Heated: Yes  
Finished: Yes  
Enclosed: Yes  
Contiguous: Yes  
Permitted: Yes  
Wet space: No  
Addition: No  
Conversion: No

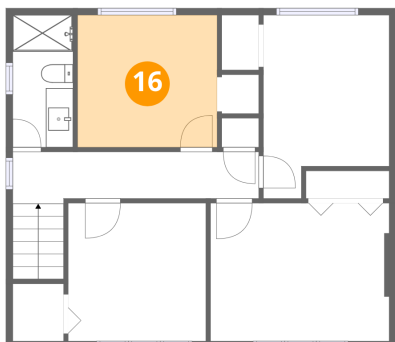
**15** Floor 3 - Hall



Dimensions: 18'0" x 3'5"  
Area: 83 sq. ft  
Counted as living area: Yes

Heated: Yes  
Finished: Yes  
Enclosed: Yes  
Contiguous: Yes  
Permitted: Yes  
Wet space: No  
Addition: No  
Conversion: No

**16** Floor 3 - Bedroom



Dimensions: 10'2" x 9'8"  
Area: 99 sq. ft  
Counted as living area: Yes

Heated: Yes  
Finished: Yes  
Enclosed: Yes  
Contiguous: Yes  
Permitted: Yes  
Wet space: No  
Addition: No  
Conversion: No