

9129 Linslade Way, Wake Forest, Wake County, North Carolina, United States, 27587

Gross Living Area: 3020 sq. ft

Level 1



Space	Area (sq. ft)	Calculation
1st floor (Living area)	1308	Coordinate Polygon Area Algorithm using inches $-((413.1 + 413.1) * (166 - 172) + (413.1 + 419.1) * (172 - 172) + (419.1 + 419.1) * (172 - 251.4) + (419.1 + 593.3) * (251.4 - 251.4) + (593.3 + 593.3) * (251.4 - 705.7) + (593.3 + 415.2) * (705.7 - 705.7) + (415.2 + 415.2) * (705.7 - 682.7) + (415.2 + 352.6) * (682.7 - 682.7) + (352.6 + 352.6) * (682.7 - 705.5) + (352.6 + 210.9) * (705.5 - 705.5) + (210.9 + 210.9) * (705.5 - 201) + (210.9 + 254.9) * (201 - 201) + (254.9 + 254.9) * (201 - 166) + (254.9 + 413.1) * (166 - 166)) * 0.5 * 0.00694$

9129 Linslade Way, Wake Forest, Wake County, North Carolina, United States, 27587

Gross Living Area: 3020 sq. ft

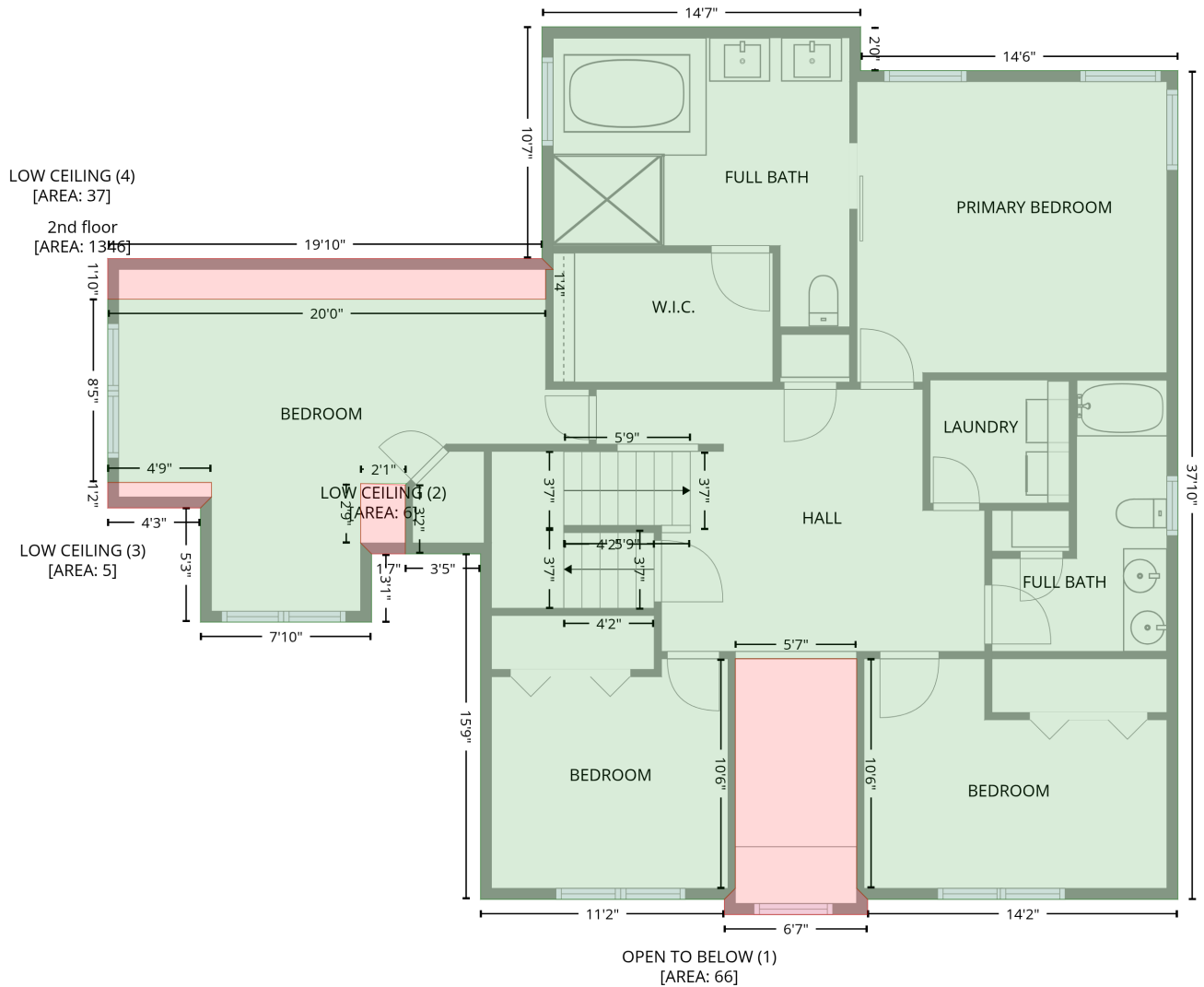
Level 1

Space	Area (sq. ft)	Calculation <small>Coordinate Polygon Area Algorithm using inches</small>
SCREENED PORCH (Non-living area)	243	$-\left((593.3 + 593.3) * (44.8 - 251.4) + (593.3 + 540.2) * (251.4 - 251.4) + (540.2 + 540.2) * (251.4 - 224.7) + (540.2 + 473.9) * (224.7 - 224.7) + (473.9 + 473.9) * (224.7 - 251.4) + (473.9 + 419.1) * (251.4 - 251.4) + (419.1 + 419.1) * (251.4 - 172) + (419.1 + 413.1) * (172 - 172) + (413.1 + 413.1) * (172 - 44.8) + (413.1 + 593.3) * (44.8 - 44.8)\right) * 0.5 * 0.00694$
PORCH (Non-living area)	225	$-\left((415.2 + 415.2) * (682.7 - 705.7) + (415.2 + 593.3) * (705.7 - 705.7) + (593.3 + 593.3) * (705.7 - 786.7) + (593.3 + 211) * (786.7 - 786.7) + (211 + 210.9) * (786.7 - 705.5) + (210.9 + 352.6) * (705.5 - 705.5) + (352.6 + 352.6) * (705.5 - 682.7) + (352.6 + 415.2) * (682.7 - 682.7)\right) * 0.5 * 0.00694$
DECK (Non-living area)	133	$-\left((413.1 + 412.8) * (44.8 - 166) + (412.8 + 254.9) * (166 - 166) + (254.9 + 254.9) * (166 - 44.8) + (254.9 + 413.1) * (44.8 - 44.8)\right) * 0.5 * 0.00694$
GARAGE (Non-living area)	537	$-\left((210.9 + 210.9) * (253.3 - 631.6) + (210.9 + 6.4) * (631.6 - 631.6) + (6.4 + 6.4) * (631.6 - 253.3) + (6.4 + 210.9) * (253.3 - 253.3)\right) * 0.5 * 0.00694$
FIREPLACE (Non-living area)	12	$-\left((540.2 + 540.2) * (224.7 - 251.4) + (540.2 + 473.9) * (251.4 - 251.4) + (473.9 + 473.9) * (251.4 - 224.7) + (473.9 + 540.2) * (224.7 - 224.7)\right) * 0.5 * 0.00694$

9129 Linslade Way, Wake Forest, Wake County, North Carolina, United States, 27587

Gross Living Area: 3020 sq. ft

Level 2



Space	Area (sq. ft)	Calculation <small>Coordinate Polygon Area Algorithm using inches</small>
2nd floor (Living area)	1346	$ \begin{aligned} & -((419.4 + 419.4) * (227.2 - 251.2) + (419.4 + 593.3) * (251.2 - 251.2) + (593.3 + 593.3) * (251.2 - 705.5) \\ & + (593.3 + 423.2) * (705.5 - 705.5) + (423.2 + 417.2) * (705.5 - 699.5) + (417.2 + 417.2) * (699.5 - 573.6) \\ & + (417.2 + 350.6) * (573.6 - 573.6) + (350.6 + 350.6) * (573.6 - 699.5) + (350.6 + 344.6) * (699.5 - 705.5) \\ & + (344.6 + 210.9) * (705.5 - 705.5) + (210.9 + 210.9) * (705.5 - 516.1) + (210.9 + 169.7) * (516.1 - 516.1) \\ & + (169.7 + 169.7) * (516.1 - 478.4) + (169.7 + 170.5) * (478.4 - 477.6) + (170.5 + 145.2) * (477.6 - 477.6) \\ & + (145.2 + 145.2) * (477.6 - 510.1) + (145.2 + 151.2) * (510.1 - 516.1) + (151.2 + 151.2) * (516.1 - 553.5) \\ & + (151.2 + 57.4) * (553.5 - 553.5) + (57.4 + 57.4) * (553.5 - 490.9) + (57.4 + 63.4) * (490.9 - 484.9) \\ & + (63.4 + 63.4) * (484.9 - 477) + (63.4 + 6.5) * (477 - 477) + (6.5 + 6.5) * (477 - 376.5) \\ & + (6.5 + 246.7) * (376.5 - 376.5) + (246.7 + 246.7) * (376.5 - 360.2) \\ & + (246.7 + 250.7) * (360.2 - 360.2) + (250.7 + 244.7) * (360.2 - 354.2) \\ & + (244.7 + 244.7) * (354.2 - 227.2) + (244.7 + 419.4) * (227.2 - 227.2) * 0.5 * 0.00694 \end{aligned} $

9129 Linslade Way, Wake Forest, Wake County, North Carolina, United States, 27587

Gross Living Area: 3020 sq. ft

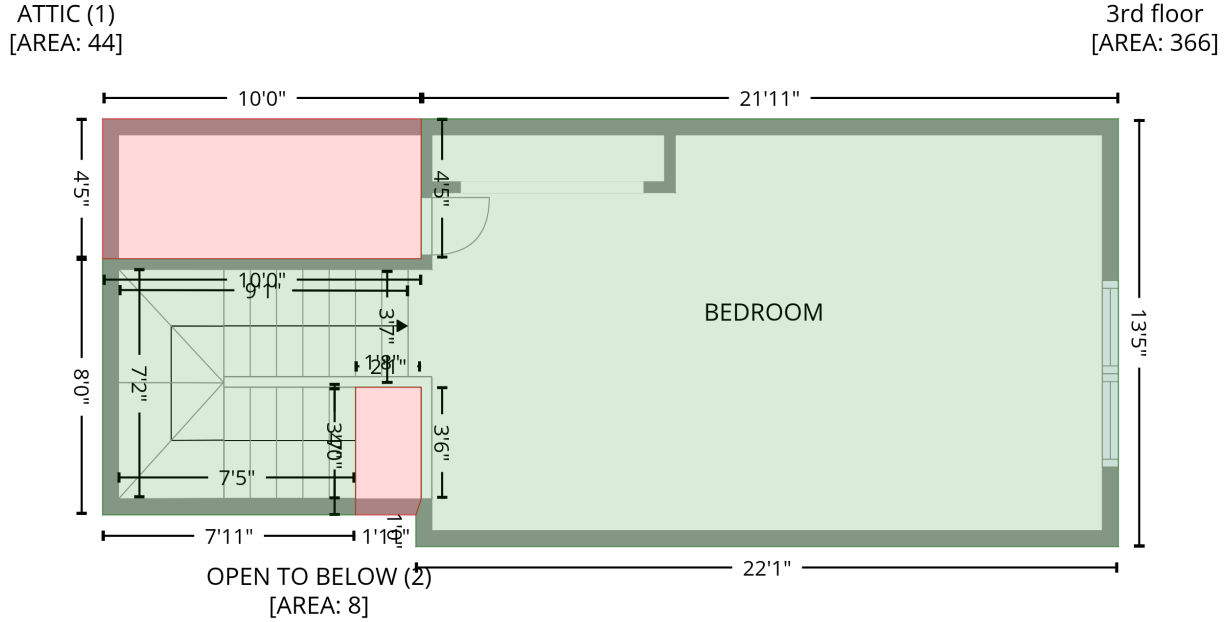
Level 2

Space	Area (sq. ft)	Calculation <small>Coordinate Polygon Area Algorithm using inches</small>
OPEN TO BELOW (Non-living area)	66	$-\left((417.2 + 417.2) * (573.6 - 699.5) + (417.2 + 423.2) * (699.5 - 705.5) + (423.2 + 423.2) * (705.5 - 713.9) + (423.2 + 344.6) * (713.9 - 713.9) + (344.6 + 344.6) * (713.9 - 705.5) + (344.6 + 350.6) * (705.5 - 699.5) + (350.6 + 350.6) * (699.5 - 573.6) + (350.6 + 417.2) * (573.6 - 573.6)\right) * 0.5 * 0.00694$
LOW CEILING (Non-living area)	6	$-\left((145.2 + 169.7) * (477.6 - 478.3) + (169.7 + 169.7) * (478.3 - 516.1) + (169.7 + 151.2) * (516.1 - 516.1) + (151.2 + 145.2) * (516.1 - 510.1) + (145.2 + 145.2) * (510.1 - 477.6)\right) * 0.5 * 0.00694$
LOW CEILING (Non-living area)	5	$-\left((63.4 + 63.4) * (477 - 484.9) + (63.4 + 57.4) * (484.9 - 490.9) + (57.4 + 6.5) * (490.9 - 490.9) + (6.5 + 6.5) * (490.9 - 477) + (6.5 + 63.4) * (477 - 477)\right) * 0.5 * 0.00694$
LOW CEILING (Non-living area)	37	$-\left((244.7 + 250.7) * (354.2 - 360.2) + (250.7 + 246.7) * (360.2 - 360.2) + (246.7 + 246.7) * (360.2 - 376.5) + (246.7 + 6.5) * (376.5 - 376.5) + (6.5 + 6.5) * (376.5 - 354.2) + (6.5 + 244.7) * (354.2 - 354.2)\right) * 0.5 * 0.00694$

9129 Linslade Way, Wake Forest, Wake County, North Carolina, United States, 27587

Gross Living Area: 3020 sq. ft

Level 3



Space	Area (sq. ft)	Calculation <small>Coordinate Polygon Area Algorithm using inches</small>
3rd floor (Living area)	366	$-\left((593.4 + 593.4) * (403.4 - 564.5) + (593.4 + 328.9) * (564.5 - 564.5) + (328.9 + 328.9) * (564.5 - 552.6) + (328.9 + 330.9) * (552.6 - 546.6) + (330.9 + 330.9) * (546.6 - 504.5) + (330.9 + 306.2) * (504.5 - 504.5) + (306.2 + 306.2) * (504.5 - 552.6) + (306.2 + 210.9) * (552.6 - 552.6) + (210.9 + 210.9) * (552.6 - 456.1) + (210.9 + 330.9) * (456.1 - 456.1) + (330.9 + 330.9) * (456.1 - 403.4) + (330.9 + 593.4) * (403.4 - 403.4)\right) * 0.5 * 0.00694$
ATTIC (Non-living area)	44	$-\left((330.9 + 330.9) * (403.4 - 456.1) + (330.9 + 210.9) * (456.1 - 456.1) + (210.9 + 210.9) * (456.1 - 403.4) + (210.9 + 330.9) * (403.4 - 403.4)\right) * 0.5 * 0.00694$
OPEN TO BELOW (Non-living area)	8	$-\left((330.9 + 330.9) * (504.5 - 546.6) + (330.9 + 328.9) * (546.6 - 552.6) + (328.9 + 306.2) * (552.6 - 552.6) + (306.2 + 306.2) * (552.6 - 504.5) + (306.2 + 330.9) * (504.5 - 504.5)\right) * 0.5 * 0.00694$