

Home report

1057 Eaffa Lane, Vinton, Bedford County, Virginia, United States, 24179




Total Area: 944 sq. ft

Floor 1: 944 sq. ft

Excluded: Porch 223 sq. ft, Deck 537 sq. ft, Fireplace 11 sq. ft, Walls: 63 sq. ft

Property summary

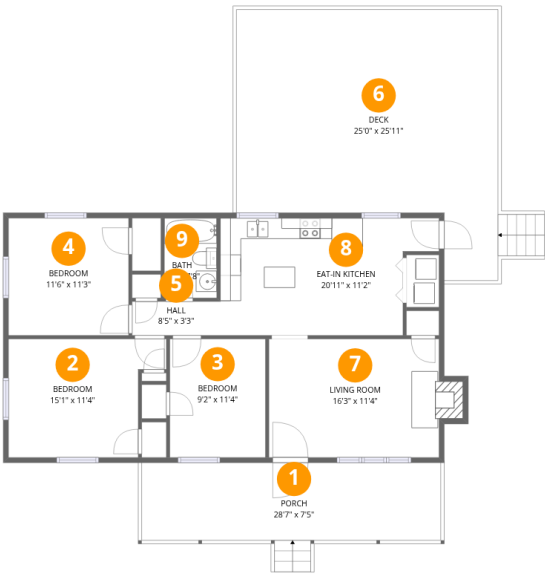
 1 Floors

 3 Bedrooms

 1 Bathrooms

Home report

1057 Eaffa Lane, Vinton, Bedford County, Virginia, United States, 24179



Room dimensions

Floor 1 Total:944sqft Excluded: 771sqft

#		Max Dimensions	sqft	Included
1	Porch	28'7" x 7'5"	223 sq. ft	No
2	Bedroom	15'1" x 11'4"	148 sq. ft	Yes
3	Bedroom	9'2" x 11'4"	104 sq. ft	Yes
4	Bedroom	11'6" x 11'3"	129 sq. ft	Yes
5	Hall	8'5" x 3'3"	27 sq. ft	Yes
6	Deck	25'0" x 25'11"	537 sq. ft	No
7	Living Room	16'3" x 11'4"	193 sq. ft	Yes
8	Eat-in Kitchen	20'11" x 11'2"	207 sq. ft	Yes
9	Bath	5'0" x 7'8"	38 sq. ft	Yes

1 Floor 1 - Porch



Max Dimensions: 28'7" x 7'5"
Calculated Area: 223 sq. ft
Included: No

Heated: No
Finished: No
Enclosed: No
Contiguous: Yes
Permitted: Yes
Wet space: No
Addition: No
Conversion: No

2 Floor 1 - Bedroom



Max Dimensions: 15'1" x 11'4"
Calculated Area: 148 sq. ft
Included: Yes

Heated: Yes
Finished: Yes
Enclosed: Yes
Contiguous: Yes
Permitted: Yes
Wet space: No
Addition: No
Conversion: No

3 Floor 1 - Bedroom



Max Dimensions: 9'2" x 11'4"
Calculated Area: 104 sq. ft
Included: Yes

Heated: Yes
Finished: Yes
Enclosed: Yes
Contiguous: Yes
Permitted: Yes
Wet space: No
Addition: No
Conversion: No

4 Floor 1 - Bedroom



Max Dimensions: 11'6" x 11'3"
Calculated Area: 129 sq. ft
Included: Yes

Heated: Yes
Finished: Yes
Enclosed: Yes
Contiguous: Yes
Permitted: Yes
Wet space: No
Addition: No
Conversion: No

5 Floor 1 - Hall

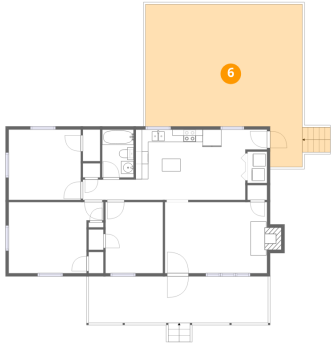


Max Dimensions: 8'5" x 3'3"
Calculated Area: 27 sq. ft
Included: Yes

Heated: Yes
Finished: Yes
Enclosed: Yes
Contiguous: Yes
Permitted: Yes
Wet space: No
Addition: No
Conversion: No

1057 Eaffa Lane, Vinton, Bedford County, Virginia, United States, 24179

6 Floor 1 - Deck



Max Dimensions: 25'0" x 25'11"
Calculated Area: 537 sq. ft
Included: No

Heated: No
Finished: No
Enclosed: No
Contiguous: Yes
Permitted: Yes
Wet space: No
Addition: No
Conversion: No

7 Floor 1 - Living Room



Max Dimensions: 16'3" x 11'4"
Calculated Area: 193 sq. ft
Included: Yes

Heated: Yes
Finished: Yes
Enclosed: Yes
Contiguous: Yes
Permitted: Yes
Wet space: No
Addition: No
Conversion: No

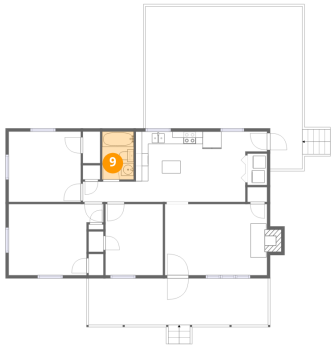
8 Floor 1 - Eat-in Kitchen



Max Dimensions: 20'11" x 11'2"
Calculated Area: 207 sq. ft
Included: Yes

Heated: Yes
Finished: Yes
Enclosed: Yes
Contiguous: Yes
Permitted: Yes
Wet space: No
Addition: No
Conversion: No

9 Floor 1 - Bath



Max Dimensions: 5'0" x 7'8"
Calculated Area: 38 sq. ft
Included: Yes

Heated: Yes
Finished: Yes
Enclosed: Yes
Contiguous: Yes
Permitted: Yes
Wet space: Yes
Addition: No
Conversion: No