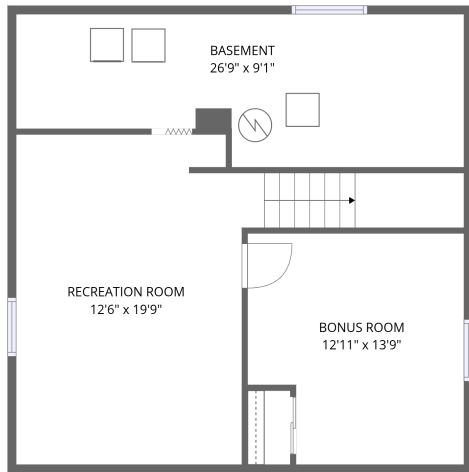
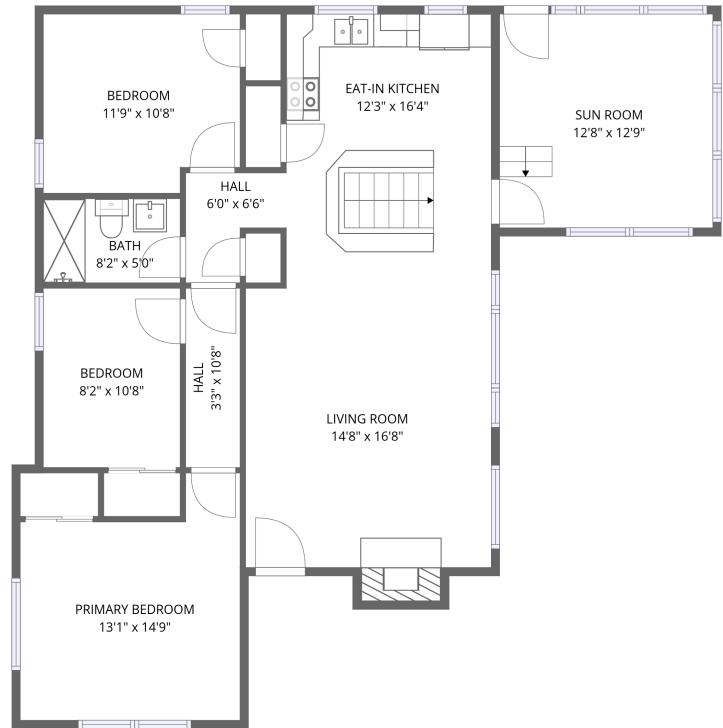


# Home data report

## 1828 Bond St, Niles, MI, US



Basement



1st floor


**Total Area: 1680 sq. ft**

Basement: 504 sq. ft, 1st Floor: 1176 sq. ft

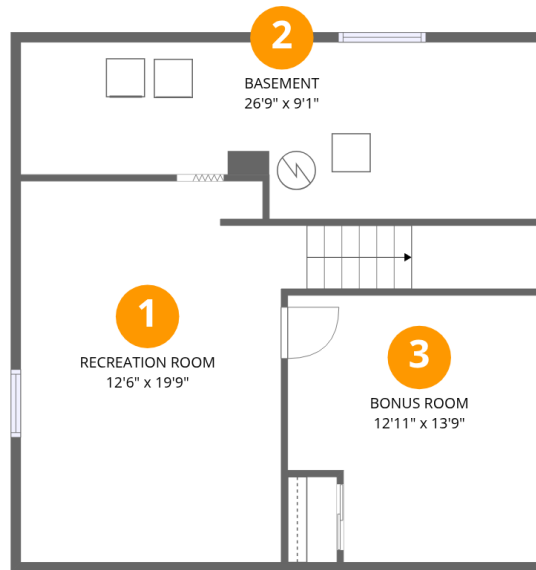
Excluded: Basement 215 sq. ft, Fireplace 12 sq. ft, Walls: 142 sq. ft

### Property summary

 **2** Floors

 **3** Bedrooms

 **1** Bathrooms



## Room dimensions

Floor 1 Below grade

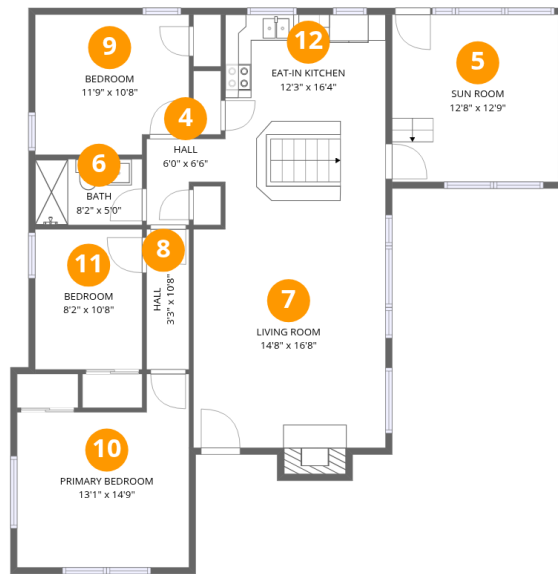
Total:504sqft

Excluded: 215sqft

#		Dimensions	sqft	Counted as living area
1	Recreation Room	12'6" x 19'9"	306 sq. ft	Yes
2	Basement	26'9" x 9'1"	215 sq. ft	No
3	Bonus Room	12'11" x 13'9"	165 sq. ft	Yes

# Home data report

## 1828 Bond St, Niles, MI, US



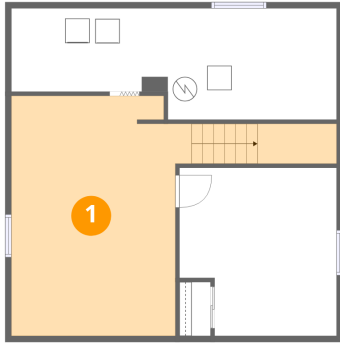
### Room dimensions

Floor 2

Total: 1176 sqft Excluded: 12 sqft

#		Dimensions	sqft	Counted as living area
4	Hall	6'0" x 6'6"	30 sq. ft	Yes
5	Sun Room	12'8" x 12'9"	162 sq. ft	Yes
6	Bath	8'2" x 5'0"	41 sq. ft	Yes
7	Living Room	14'8" x 16'8"	254 sq. ft	Yes
8	Hall	3'3" x 10'8"	35 sq. ft	Yes
9	Bedroom	11'9" x 10'8"	120 sq. ft	Yes
10	Primary Bedroom	13'1" x 14'9"	165 sq. ft	Yes
11	Bedroom	8'2" x 10'8"	87 sq. ft	Yes
12	Eat-in Kitchen	12'3" x 16'4"	200 sq. ft	Yes

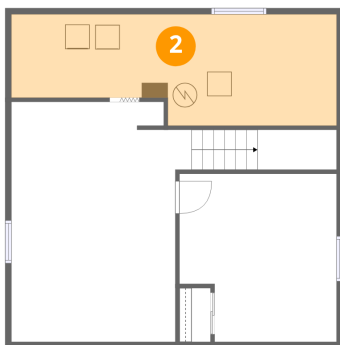
## 1 Floor 1 - Recreation Room



Dimensions: 12'6" x 19'9"  
Area: 306 sq. ft  
Counted as living area: Yes

Heated: Yes  
Finished: Yes  
Enclosed: Yes  
Contiguous: Yes  
Permitted: Yes  
Wet space: No  
Addition: No  
Conversion: No

## 2 Floor 1 - Basement



Dimensions: 26'9" x 9'1"  
Area: 215 sq. ft  
Counted as living area: No

Heated: Yes  
Finished: No  
Enclosed: Yes  
Contiguous: Yes  
Permitted: Yes  
Wet space: No  
Addition: No  
Conversion: No

### 3 Floor 1 - Bonus Room



Dimensions: 12'11" x 13'9"  
Area: 165 sq. ft  
Counted as living area: Yes

Heated: Yes  
Finished: Yes  
Enclosed: Yes  
Contiguous: Yes  
Permitted: Yes  
Wet space: No  
Addition: No  
Conversion: No

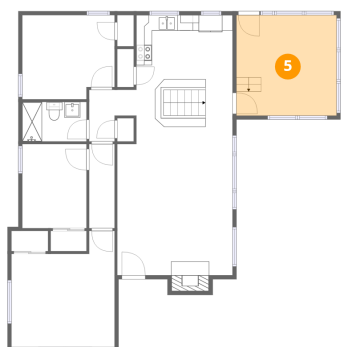
### 4 Floor 2 - Hall



Dimensions: 6'0" x 6'6"  
Area: 30 sq. ft  
Counted as living area: Yes

Heated: Yes  
Finished: Yes  
Enclosed: Yes  
Contiguous: Yes  
Permitted: Yes  
Wet space: No  
Addition: No  
Conversion: No

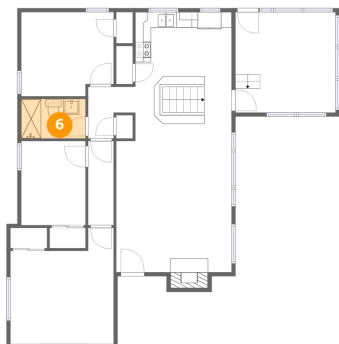
### 5 Floor 2 - Sun Room



Dimensions: 12'8" x 12'9"  
Area: 162 sq. ft  
Counted as living area: Yes

Heated: Yes  
Finished: Yes  
Enclosed: Yes  
Contiguous: Yes  
Permitted: Yes  
Wet space: No  
Addition: No  
Conversion: No

## 6 Floor 2 - Bath



Dimensions: 8'2" x 5'0"  
Area: 41 sq. ft  
Counted as living area: Yes

Heated: Yes  
Finished: Yes  
Enclosed: Yes  
Contiguous: Yes  
Permitted: Yes  
Wet space: Yes  
Addition: No  
Conversion: No

## 7 Floor 2 - Living Room



Dimensions: 14'8" x 16'8"  
Area: 254 sq. ft  
Counted as living area: Yes

Heated: Yes  
Finished: Yes  
Enclosed: Yes  
Contiguous: Yes  
Permitted: Yes  
Wet space: No  
Addition: No  
Conversion: No

## 8 Floor 2 - Hall



Dimensions: 3'3" x 10'8"  
Area: 35 sq. ft  
Counted as living area: Yes

Heated: Yes  
Finished: Yes  
Enclosed: Yes  
Contiguous: Yes  
Permitted: Yes  
Wet space: No  
Addition: No  
Conversion: No

### 9 Floor 2 - Bedroom



Dimensions: 11'9" x 10'8"  
Area: 120 sq. ft  
Counted as living area: Yes

Heated: Yes  
Finished: Yes  
Enclosed: Yes  
Contiguous: Yes  
Permitted: Yes  
Wet space: No  
Addition: No  
Conversion: No

### 10 Floor 2 - Primary Bedroom



Dimensions: 13'1" x 14'9"  
Area: 165 sq. ft  
Counted as living area: Yes

Heated: Yes  
Finished: Yes  
Enclosed: Yes  
Contiguous: Yes  
Permitted: Yes  
Wet space: No  
Addition: No  
Conversion: No

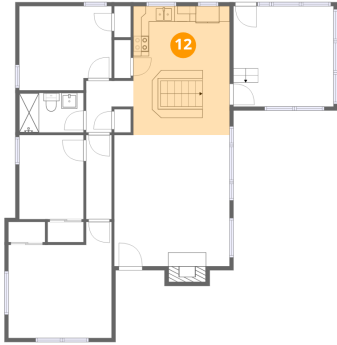
### 11 Floor 2 - Bedroom



Dimensions: 8'2" x 10'8"  
Area: 87 sq. ft  
Counted as living area: Yes

Heated: Yes  
Finished: Yes  
Enclosed: Yes  
Contiguous: Yes  
Permitted: Yes  
Wet space: No  
Addition: No  
Conversion: No

**12** Floor 2 - Eat-in Kitchen



Dimensions: 12'3" x 16'4"  
Area: 200 sq. ft  
Counted as living area: Yes

Heated: Yes  
Finished: Yes  
Enclosed: Yes  
Contiguous: Yes  
Permitted: Yes  
Wet space: No  
Addition: No  
Conversion: No