

Home data report

8902 Woodlawn Drive, Pecan Plantation, Granbury, Hood County, Texas, United States, 76049

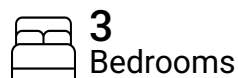


Total Area: 2080 sq. ft

1st Floor: 2080 sq. ft

Excluded: Garage 486 sq. ft, Walls: 168 sq. ft

Property summary



Scan captured on Sat, 11 Apr 2026 15:43:27 GMT

FLOOR PLAN CREATED BY CUBICASA APP. MEASUREMENTS DEEMED HIGHLY RELIABLE BUT NOT GUARANTEED.

Home data report

8902 Woodlawn Drive, Pecan Plantation, Granbury, Hood County, Texas, United States, 76049



Room dimensions

Floor 1

Total:2080sqft Excluded: 486sqft

#		Dimensions	sqft	Counted as living area
1	Primary Bath	9'2" x 12'7"	115 sq. ft	Yes
2	Foyer	6'8" x 7'7"	50 sq. ft	Yes
3	Bath	3'6" x 2'9"	10 sq. ft	Yes
4	Primary Bedroom	13'9" x 13'2"	182 sq. ft	Yes
5	Bath	9'8" x 8'0"	77 sq. ft	Yes
6	Laundry	6'9" x 6'2"	42 sq. ft	Yes
7	Garage	21'2" x 23'0"	486 sq. ft	No
8	W.I.C.	9'3" x 4'10"	45 sq. ft	Yes
9	Sitting Room	11'11" x 7'10"	93 sq. ft	Yes
10	Dining Area	11'4" x 16'6"	186 sq. ft	Yes
11	Living Room	18'5" x 19'8"	362 sq. ft	Yes

Scan captured on Sat, 11 Apr 2026 15:43:27 GMT

FLOOR PLAN CREATED BY CUBICASA APP. MEASUREMENTS DEEMED HIGHLY RELIABLE BUT NOT GUARANTEED.

Home data report

**8902 Woodlawn Drive, Pecan Plantation, Granbury, Hood
County, Texas, United States, 76049**

#		Dimensions	sqft	Counted as living area
12	Hall	17'11" x 8'0"	143 sq. ft	Yes
13	Sun Room	11'5" x 13'10"	157 sq. ft	Yes
14	Bedroom	10'5" x 15'1"	157 sq. ft	Yes
15	Pantry	4'9" x 2'10"	14 sq. ft	Yes
16	W.I.C.	6'10" x 3'4"	23 sq. ft	Yes
17	Bedroom	9'9" x 12'0"	118 sq. ft	Yes
18	Breakfast Nook	12'2" x 11'11"	145 sq. ft	Yes
19	Kitchen	11'4" x 13'9"	155 sq. ft	Yes

8902 Woodlawn Drive, Pecan Plantation, Granbury, Hood
County, Texas, United States, 76049

1 Floor 1 - Primary Bath



Dimensions: 9'2" x 12'7"
Area: 115 sq. ft
Counted as living area: Yes

Heated: Yes
Finished: Yes
Enclosed: Yes
Contiguous: Yes
Permitted: Yes
Wet space: Yes
Addition: No
Conversion: No

2 Floor 1 - Foyer



Dimensions: 6'8" x 7'7"
Area: 50 sq. ft
Counted as living area: Yes

Heated: Yes
Finished: Yes
Enclosed: Yes
Contiguous: Yes
Permitted: Yes
Wet space: No
Addition: No
Conversion: No

8902 Woodlawn Drive, Pecan Plantation, Granbury, Hood County, Texas, United States, 76049

3 Floor 1 - Bath



Dimensions: 3'6" x 2'9"
Area: 10 sq. ft
Counted as living area: Yes

Heated: Yes
Finished: Yes
Enclosed: Yes
Contiguous: Yes
Permitted: Yes
Wet space: Yes
Addition: No
Conversion: No

4 Floor 1 - Primary Bedroom



Dimensions: 13'9" x 13'2"
Area: 182 sq. ft
Counted as living area: Yes

Heated: Yes
Finished: Yes
Enclosed: Yes
Contiguous: Yes
Permitted: Yes
Wet space: No
Addition: No
Conversion: No

5 Floor 1 - Bath



Dimensions: 9'8" x 8'0"
Area: 77 sq. ft
Counted as living area: Yes

Heated: Yes
Finished: Yes
Enclosed: Yes
Contiguous: Yes
Permitted: Yes
Wet space: Yes
Addition: No
Conversion: No

8902 Woodlawn Drive, Pecan Plantation, Granbury, Hood County, Texas, United States, 76049

6 Floor 1 - Laundry



Dimensions: 6'9" x 6'2"
Area: 42 sq. ft
Counted as living area: Yes

Heated: Yes
Finished: Yes
Enclosed: Yes
Contiguous: Yes
Permitted: Yes
Wet space: No
Addition: No
Conversion: No

7 Floor 1 - Garage



Dimensions: 21'2" x 23'0"
Area: 486 sq. ft
Counted as living area: No

Heated: No
Finished: No
Enclosed: Yes
Contiguous: Yes
Permitted: Yes
Wet space: No
Addition: No
Conversion: No

8 Floor 1 - W.I.C.



Dimensions: 9'3" x 4'10"
Area: 45 sq. ft
Counted as living area: Yes

Heated: Yes
Finished: Yes
Enclosed: Yes
Contiguous: Yes
Permitted: Yes
Wet space: No
Addition: No
Conversion: No

8902 Woodlawn Drive, Pecan Plantation, Granbury, Hood County, Texas, United States, 76049

9 Floor 1 - Sitting Room



Dimensions: 11'11" x 7'10"
Area: 93 sq. ft
Counted as living area: Yes

Heated: Yes
Finished: Yes
Enclosed: Yes
Contiguous: Yes
Permitted: Yes
Wet space: No
Addition: No
Conversion: No

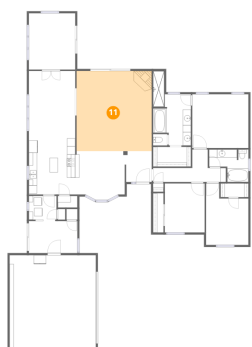
10 Floor 1 - Dining Area



Dimensions: 11'4" x 16'6"
Area: 186 sq. ft
Counted as living area: Yes

Heated: Yes
Finished: Yes
Enclosed: Yes
Contiguous: Yes
Permitted: Yes
Wet space: No
Addition: No
Conversion: No

11 Floor 1 - Living Room



Dimensions: 18'5" x 19'8"
Area: 362 sq. ft
Counted as living area: Yes

Heated: Yes
Finished: Yes
Enclosed: Yes
Contiguous: Yes
Permitted: Yes
Wet space: No
Addition: No
Conversion: No

8902 Woodlawn Drive, Pecan Plantation, Granbury, Hood County, Texas, United States, 76049

12 Floor 1 - Hall



Dimensions: 17'11" x 8'0"
Area: 143 sq. ft
Counted as living area: Yes

Heated: Yes
Finished: Yes
Enclosed: Yes
Contiguous: Yes
Permitted: Yes
Wet space: No
Addition: No
Conversion: No

13 Floor 1 - Sun Room



Dimensions: 11'5" x 13'10"
Area: 157 sq. ft
Counted as living area: Yes

Heated: Yes
Finished: Yes
Enclosed: Yes
Contiguous: Yes
Permitted: Yes
Wet space: No
Addition: No
Conversion: No

14 Floor 1 - Bedroom



Dimensions: 10'5" x 15'1"
Area: 157 sq. ft
Counted as living area: Yes

Heated: Yes
Finished: Yes
Enclosed: Yes
Contiguous: Yes
Permitted: Yes
Wet space: No
Addition: No
Conversion: No

8902 Woodlawn Drive, Pecan Plantation, Granbury, Hood County, Texas, United States, 76049

15 Floor 1 - Pantry



Dimensions: 4'9" x 2'10"
Area: 14 sq. ft
Counted as living area: Yes

Heated: Yes
Finished: Yes
Enclosed: Yes
Contiguous: Yes
Permitted: Yes
Wet space: No
Addition: No
Conversion: No

16 Floor 1 - W.I.C.



Dimensions: 6'10" x 3'4"
Area: 23 sq. ft
Counted as living area: Yes

Heated: Yes
Finished: Yes
Enclosed: Yes
Contiguous: Yes
Permitted: Yes
Wet space: No
Addition: No
Conversion: No

17 Floor 1 - Bedroom



Dimensions: 9'9" x 12'0"
Area: 118 sq. ft
Counted as living area: Yes

Heated: Yes
Finished: Yes
Enclosed: Yes
Contiguous: Yes
Permitted: Yes
Wet space: No
Addition: No
Conversion: No

8902 Woodlawn Drive, Pecan Plantation, Granbury, Hood
County, Texas, United States, 76049

18 Floor 1 - Breakfast Nook



Dimensions: 12'2" x 11'11"
Area: 145 sq. ft
Counted as living area: Yes

Heated: Yes
Finished: Yes
Enclosed: Yes
Contiguous: Yes
Permitted: Yes
Wet space: No
Addition: No
Conversion: No

19 Floor 1 - Kitchen



Dimensions: 11'4" x 13'9"
Area: 155 sq. ft
Counted as living area: Yes

Heated: Yes
Finished: Yes
Enclosed: Yes
Contiguous: Yes
Permitted: Yes
Wet space: No
Addition: No
Conversion: No