

67 Fieldstream Chase, Bracebridge, ON, CA



Total Area: 1430 sq. ft

Basement: 0 sq. ft, 1st Floor: 636 sq. ft, 2nd Floor: 794 sq. ft

Excluded: Basement 625 sq. ft, Garage 378 sq. ft, Porch 76 sq. ft, Deck 39 sq. ft, Walls: 206 sq. ft

Property summary

 **3** Floors

 **3** Bedrooms

 **2** Bathrooms

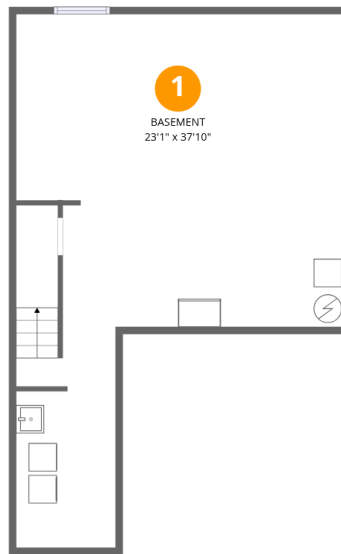
Home data report

67 Fieldstream Chase, Bracebridge, ON, CA

 **1**
Half baths

 **1**
Garages

67 Fieldstream Chase, Bracebridge, ON, CA



Room dimensions

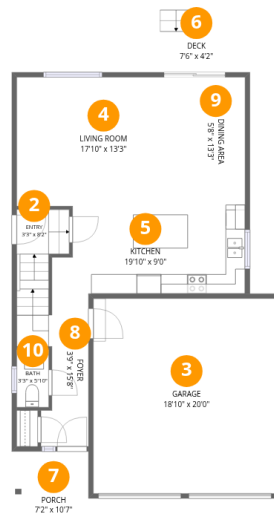
Floor 1 Below grade

Total: 0sqft

Excluded: 625sqft

#		Dimensions	sqft	Counted as living area
1	Basement	23'1" x 37'10"	619 sq. ft	No

67 Fieldstream Chase, Bracebridge, ON, CA



Room dimensions

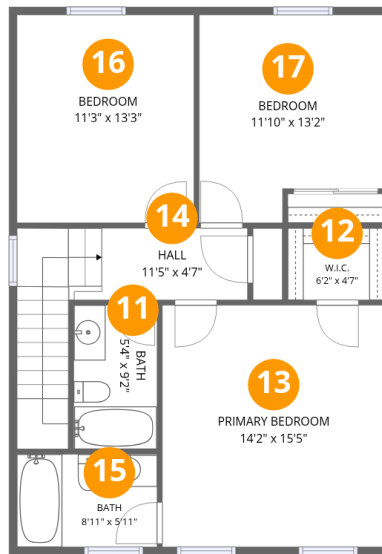
Floor 2

Total: 636 sqft

Excluded: 493 sqft

#		Dimensions	sqft	Counted as living area
2	Entry	3'3" x 8'2"	62 sq. ft	Yes
3	Garage	18'10" x 20'0"	378 sq. ft	No
4	Living Room	17'10" x 13'3"	236 sq. ft	Yes
5	Kitchen	19'10" x 9'0"	167 sq. ft	Yes
6	Deck	7'6" x 4'2"	39 sq. ft	No
7	Porch	7'2" x 10'7"	76 sq. ft	No
8	Foyer	3'9" x 15'8"	58 sq. ft	Yes
9	Dining Area	5'8" x 13'3"	75 sq. ft	Yes
10	Bath	3'3" x 5'10"	19 sq. ft	Yes

67 Fieldstream Chase, Bracebridge, ON, CA



Room dimensions

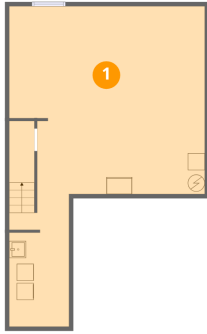
Floor 3

Total: 794 sqft

Excluded: 0 sqft

#		Dimensions	sqft	Counted as living area
11	Bath	5'4" x 9'2"	49 sq. ft	Yes
12	W.I.C.	6'2" x 4'7"	28 sq. ft	Yes
13	Primary Bedroom	14'2" x 15'5"	218 sq. ft	Yes
14	Hall	11'5" x 4'7"	98 sq. ft	Yes
15	Bath	8'11" x 5'11"	53 sq. ft	Yes
16	Bedroom	11'3" x 13'3"	149 sq. ft	Yes
17	Bedroom	11'10" x 13'2"	142 sq. ft	Yes

1 Floor 1 - Basement



Dimensions: 23'1" x 37'10"
Area: 619 sq. ft
Counted as living area: No

Heated: Yes
Finished: No
Enclosed: Yes
Contiguous: Yes
Permitted: Yes
Wet space: No
Addition: No
Conversion: No

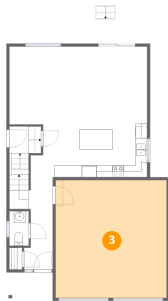
2 Floor 2 - Entry



Dimensions: 3'3" x 8'2"
Area: 62 sq. ft
Counted as living area: Yes

Heated: Yes
Finished: Yes
Enclosed: Yes
Contiguous: Yes
Permitted: Yes
Wet space: No
Addition: No
Conversion: No

3 Floor 2 - Garage



Dimensions: 18'10" x 20'0"
Area: 378 sq. ft
Counted as living area: No

Heated: No
Finished: No
Enclosed: Yes
Contiguous: Yes
Permitted: Yes
Wet space: No
Addition: No
Conversion: No

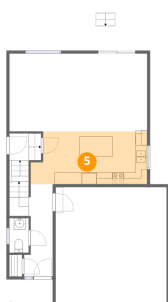
4 Floor 2 - Living Room



Dimensions: 17'10" x 13'3"
Area: 236 sq. ft
Counted as living area: Yes

Heated: Yes
Finished: Yes
Enclosed: Yes
Contiguous: Yes
Permitted: Yes
Wet space: No
Addition: No
Conversion: No

5 Floor 2 - Kitchen



Dimensions: 19'10" x 9'0"
Area: 167 sq. ft
Counted as living area: Yes

Heated: Yes
Finished: Yes
Enclosed: Yes
Contiguous: Yes
Permitted: Yes
Wet space: No
Addition: No
Conversion: No

6 Floor 2 - Deck



Dimensions: 7'6" x 4'2"
Area: 39 sq. ft
Counted as living area: No

Heated: No
Finished: No
Enclosed: No
Contiguous: Yes
Permitted: Yes
Wet space: No
Addition: No
Conversion: No

7 Floor 2 - Porch



Dimensions: 7'2" x 10'7"
Area: 76 sq. ft
Counted as living area: No

Heated: No
Finished: No
Enclosed: No
Contiguous: Yes
Permitted: Yes
Wet space: No
Addition: No
Conversion: No

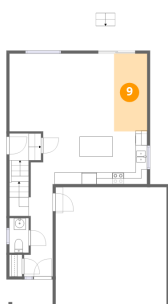
8 Floor 2 - Foyer



Dimensions: 3'9" x 15'8"
Area: 58 sq. ft
Counted as living area: Yes

Heated: Yes
Finished: Yes
Enclosed: Yes
Contiguous: Yes
Permitted: Yes
Wet space: No
Addition: No
Conversion: No

9 Floor 2 - Dining Area



Dimensions: 5'8" x 13'3"
Area: 75 sq. ft
Counted as living area: Yes

Heated: Yes
Finished: Yes
Enclosed: Yes
Contiguous: Yes
Permitted: Yes
Wet space: No
Addition: No
Conversion: No

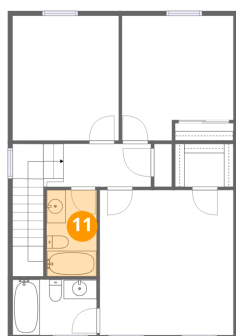
10 Floor 2 - Bath



Dimensions: 3'3" x 5'10"
Area: 19 sq. ft
Counted as living area: Yes

Heated: Yes
Finished: Yes
Enclosed: Yes
Contiguous: Yes
Permitted: Yes
Wet space: Yes
Addition: No
Conversion: No

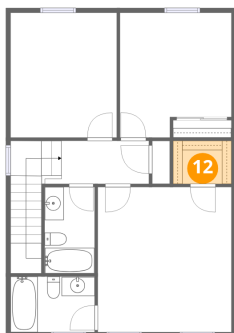
11 Floor 3 - Bath



Dimensions: 5'4" x 9'2"
Area: 49 sq. ft
Counted as living area: Yes

Heated: Yes
Finished: Yes
Enclosed: Yes
Contiguous: Yes
Permitted: Yes
Wet space: Yes
Addition: No
Conversion: No

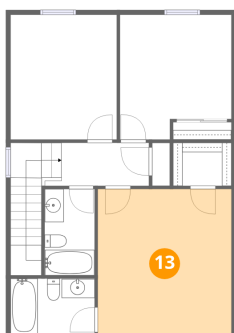
12 Floor 3 - W.I.C.



Dimensions: 6'2" x 4'7"
Area: 28 sq. ft
Counted as living area: Yes

Heated: Yes
Finished: Yes
Enclosed: Yes
Contiguous: Yes
Permitted: Yes
Wet space: No
Addition: No
Conversion: No

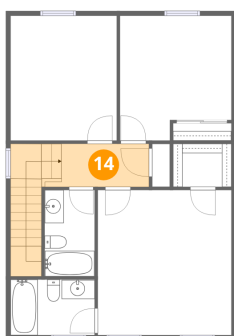
13 Floor 3 - Primary Bedroom



Dimensions: 14'2" x 15'5"
Area: 218 sq. ft
Counted as living area: Yes

Heated: Yes
Finished: Yes
Enclosed: Yes
Contiguous: Yes
Permitted: Yes
Wet space: No
Addition: No
Conversion: No

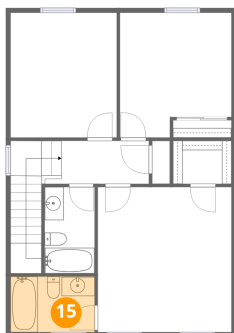
14 Floor 3 - Hall



Dimensions: 11'5" x 4'7"
Area: 98 sq. ft
Counted as living area: Yes

Heated: Yes
Finished: Yes
Enclosed: Yes
Contiguous: Yes
Permitted: Yes
Wet space: No
Addition: No
Conversion: No

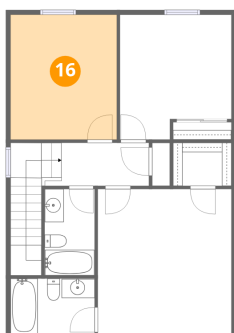
15 Floor 3 - Bath



Dimensions: 8'11" x 5'11"
Area: 53 sq. ft
Counted as living area: Yes

Heated: Yes
Finished: Yes
Enclosed: Yes
Contiguous: Yes
Permitted: Yes
Wet space: Yes
Addition: No
Conversion: No

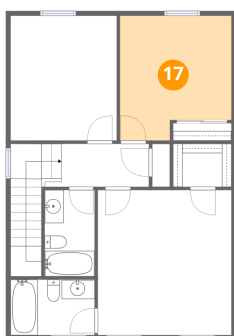
16 Floor 3 - Bedroom



Dimensions: 11'3" x 13'3"
Area: 149 sq. ft
Counted as living area: Yes

Heated: Yes
Finished: Yes
Enclosed: Yes
Contiguous: Yes
Permitted: Yes
Wet space: No
Addition: No
Conversion: No

17 Floor 3 - Bedroom



Dimensions: 11'10" x 13'2"
Area: 142 sq. ft
Counted as living area: Yes

Heated: Yes
Finished: Yes
Enclosed: Yes
Contiguous: Yes
Permitted: Yes
Wet space: No
Addition: No
Conversion: No