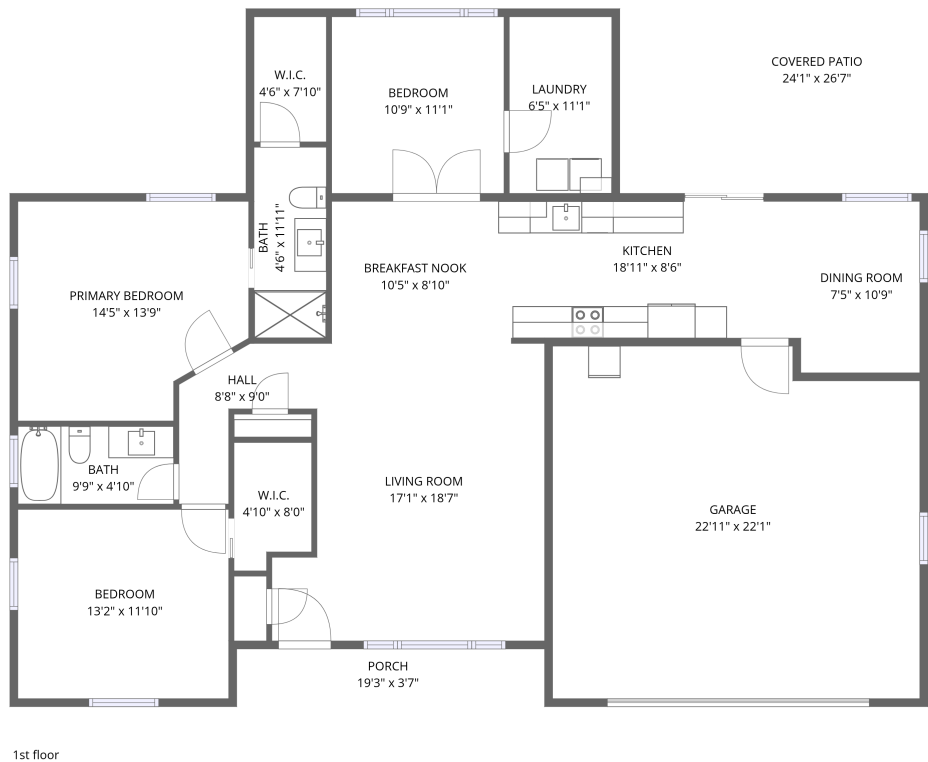


Home data report

5532 Berlin Drive, Miller's Bayou, Port Richey, Pasco County, Florida, United States, 34668



Total Area: 1428 sq. ft

1st Floor: 1428 sq. ft

Excluded: Porch 69 sq. ft, Covered patio 465 sq. ft, Garage 489 sq. ft, Walls: 126 sq. ft

Property summary

 **1** Floors

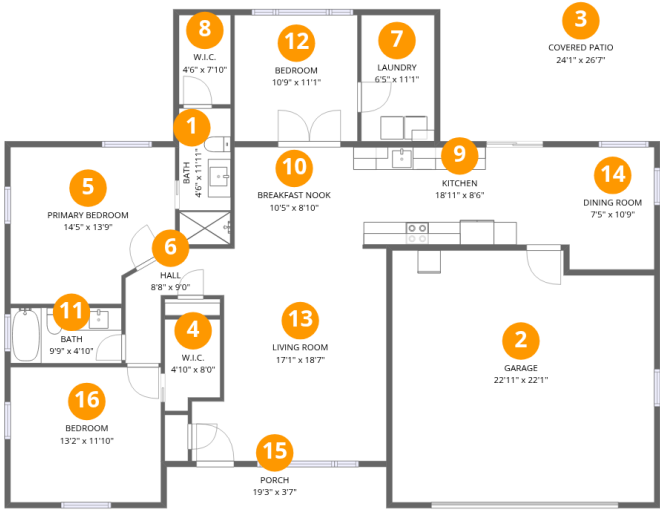
 **3** Bedrooms

 **2** Bathrooms

 **1** Garages

Home data report

5532 Berlin Drive, Miller's Bayou, Port Richey, Pasco County, Florida, United States, 34668



Room dimensions

Floor 1 Total:1428sqft Excluded: 1023sqft

#		Dimensions	sqft	Counted as living area
1	Bath	4'6" x 11'11"	54 sq. ft	Yes
2	Garage	22'11" x 22'1"	506 sq. ft	No
3	Covered Patio	24'1" x 26'7"	641 sq. ft	No
4	W.I.C.	4'10" x 8'0"	39 sq. ft	Yes
5	Primary Bedroom	14'5" x 13'9"	198 sq. ft	Yes
6	Hall	8'8" x 9'0"	78 sq. ft	Yes
7	Laundry	6'5" x 11'1"	71 sq. ft	Yes
8	W.I.C.	4'6" x 7'10"	35 sq. ft	Yes
9	Kitchen	18'11" x 8'6"	161 sq. ft	Yes
10	Breakfast Nook	10'5" x 8'10"	92 sq. ft	Yes
11	Bath	9'9" x 4'10"	47 sq. ft	Yes

Home data report

**5532 Berlin Drive, Miller's Bayou, Port Richey, Pasco County,
Florida, United States, 34668**

#		Dimensions	sqft	Counted as living area
12	Bedroom	10'9" x 11'1"	119 sq. ft	Yes
13	Living Room	17'1" x 18'7"	317 sq. ft	Yes
14	Dining Room	7'5" x 10'9"	80 sq. ft	Yes
15	Porch	19'3" x 3'7"	69 sq. ft	No
16	Bedroom	13'2" x 11'10"	156 sq. ft	Yes

5532 Berlin Drive, Miller's Bayou, Port Richey, Pasco County,
Florida, United States, 34668

1 Floor 1 - Bath



Dimensions: 4'6" x 11'11"
Area: 54 sq. ft
Counted as living area: Yes

Heated: Yes
Finished: Yes
Enclosed: Yes
Contiguous: Yes
Permitted: Yes
Wet space: Yes
Addition: No
Conversion: No

2 Floor 1 - Garage



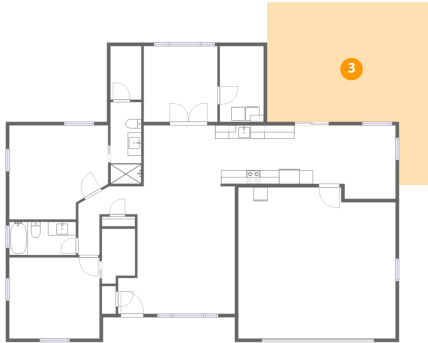
Dimensions: 22'11" x 22'1"
Area: 506 sq. ft
Counted as living area: No

Heated: No
Finished: No
Enclosed: Yes
Contiguous: Yes
Permitted: Yes
Wet space: No
Addition: No
Conversion: No

Home data report

5532 Berlin Drive, Miller's Bayou, Port Richey, Pasco County,
Florida, United States, 34668

3 Floor 1 - Covered Patio



Dimensions: 24'1" x 26'7"
Area: 641 sq. ft
Counted as living area: No

Heated: No
Finished: No
Enclosed: No
Contiguous: No
Permitted: Yes
Wet space: No
Addition: No
Conversion: No

4 Floor 1 - W.I.C.



Dimensions: 4'10" x 8'0"
Area: 39 sq. ft
Counted as living area: Yes

Heated: Yes
Finished: Yes
Enclosed: Yes
Contiguous: Yes
Permitted: Yes
Wet space: No
Addition: No
Conversion: No

5 Floor 1 - Primary Bedroom



Dimensions: 14'5" x 13'9"
Area: 198 sq. ft
Counted as living area: Yes

Heated: Yes
Finished: Yes
Enclosed: Yes
Contiguous: Yes
Permitted: Yes
Wet space: No
Addition: No
Conversion: No

Home data report

5532 Berlin Drive, Miller's Bayou, Port Richey, Pasco County,
Florida, United States, 34668

6 Floor 1 - Hall



Dimensions: 8'8" x 9'0"
Area: 78 sq. ft
Counted as living area: Yes

Heated: Yes
Finished: Yes
Enclosed: Yes
Contiguous: Yes
Permitted: Yes
Wet space: No
Addition: No
Conversion: No

7 Floor 1 - Laundry



Dimensions: 6'5" x 11'1"
Area: 71 sq. ft
Counted as living area: Yes

Heated: Yes
Finished: Yes
Enclosed: Yes
Contiguous: Yes
Permitted: Yes
Wet space: No
Addition: No
Conversion: No

8 Floor 1 - W.I.C.



Dimensions: 4'6" x 7'10"
Area: 35 sq. ft
Counted as living area: Yes

Heated: Yes
Finished: Yes
Enclosed: Yes
Contiguous: Yes
Permitted: Yes
Wet space: No
Addition: No
Conversion: No

5532 Berlin Drive, Miller's Bayou, Port Richey, Pasco County,
Florida, United States, 34668

9 Floor 1 - Kitchen



Dimensions: 18'11" x 8'6"
Area: 161 sq. ft
Counted as living area: Yes

Heated: Yes
Finished: Yes
Enclosed: Yes
Contiguous: Yes
Permitted: Yes
Wet space: No
Addition: No
Conversion: No

10 Floor 1 - Breakfast Nook



Dimensions: 10'5" x 8'10"
Area: 92 sq. ft
Counted as living area: Yes

Heated: Yes
Finished: Yes
Enclosed: Yes
Contiguous: Yes
Permitted: Yes
Wet space: No
Addition: No
Conversion: No

11 Floor 1 - Bath



Dimensions: 9'9" x 4'10"
Area: 47 sq. ft
Counted as living area: Yes

Heated: Yes
Finished: Yes
Enclosed: Yes
Contiguous: Yes
Permitted: Yes
Wet space: Yes
Addition: No
Conversion: No

Home data report

5532 Berlin Drive, Miller's Bayou, Port Richey, Pasco County,
Florida, United States, 34668

12 Floor 1 - Bedroom



Dimensions: 10'9" x 11'1"
Area: 119 sq. ft
Counted as living area: Yes

Heated: Yes
Finished: Yes
Enclosed: Yes
Contiguous: Yes
Permitted: Yes
Wet space: No
Addition: No
Conversion: No

13 Floor 1 - Living Room



Dimensions: 17'1" x 18'7"
Area: 317 sq. ft
Counted as living area: Yes

Heated: Yes
Finished: Yes
Enclosed: Yes
Contiguous: Yes
Permitted: Yes
Wet space: No
Addition: No
Conversion: No

14 Floor 1 - Dining Room



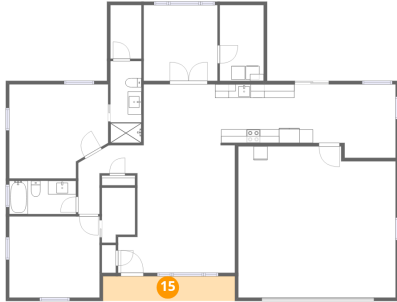
Dimensions: 7'5" x 10'9"
Area: 80 sq. ft
Counted as living area: Yes

Heated: Yes
Finished: Yes
Enclosed: Yes
Contiguous: Yes
Permitted: Yes
Wet space: No
Addition: No
Conversion: No

Home data report

**5532 Berlin Drive, Miller's Bayou, Port Richey, Pasco County,
Florida, United States, 34668**

15 Floor 1 - Porch



Dimensions: 19'3" x 3'7"
Area: 69 sq. ft
Counted as living area: No

Heated: No
Finished: No
Enclosed: No
Contiguous: Yes
Permitted: Yes
Wet space: No
Addition: No
Conversion: No

16 Floor 1 - Bedroom



Dimensions: 13'2" x 11'10"
Area: 156 sq. ft
Counted as living area: Yes

Heated: Yes
Finished: Yes
Enclosed: Yes
Contiguous: Yes
Permitted: Yes
Wet space: No
Addition: No
Conversion: No