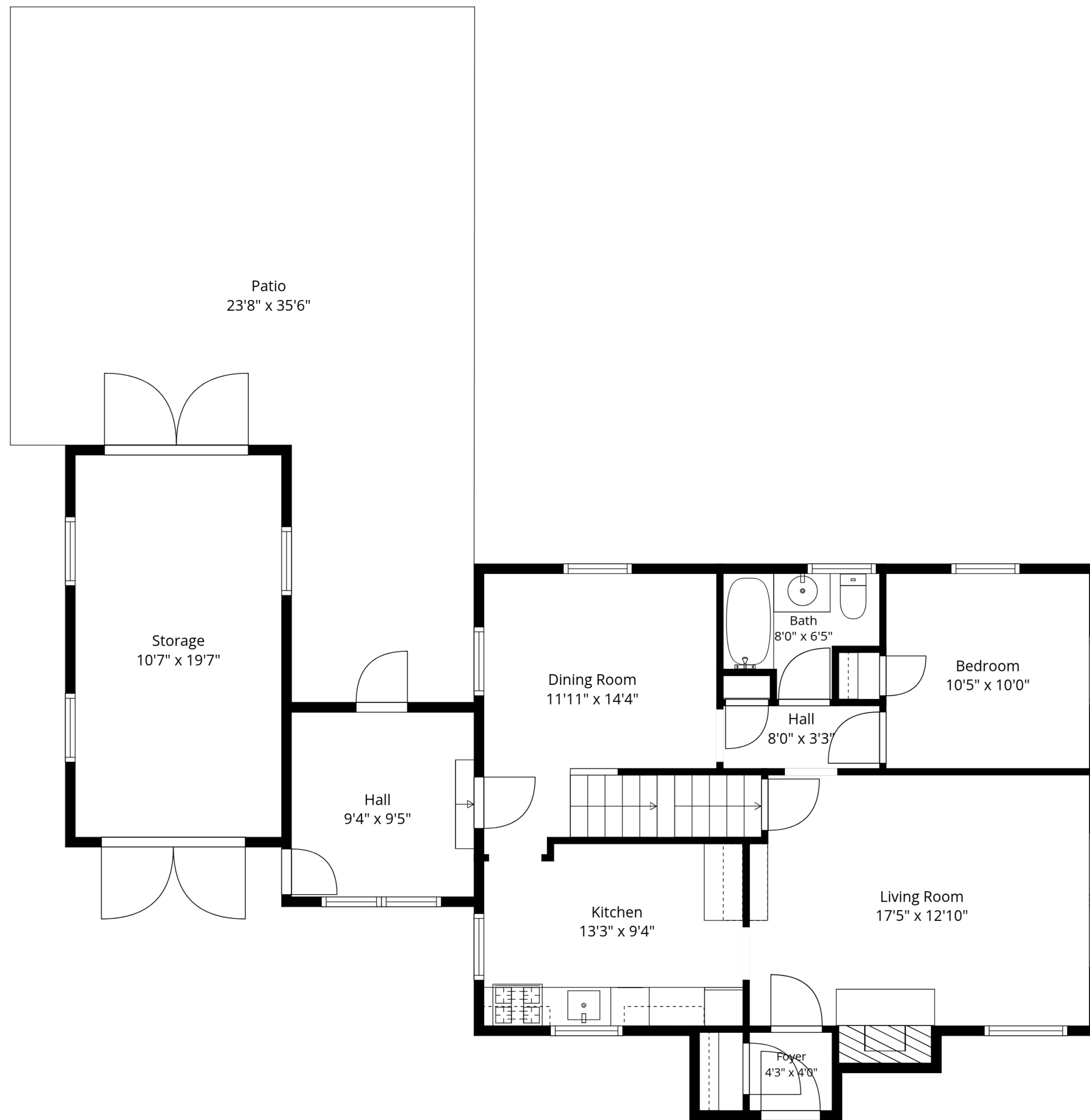


Basement
31'0" x 23'1"

TOTAL: 1690 sq. ft

Basement: 0 sq. ft, 1st floor: 851 sq. ft, 2nd floor: 839 sq. ft

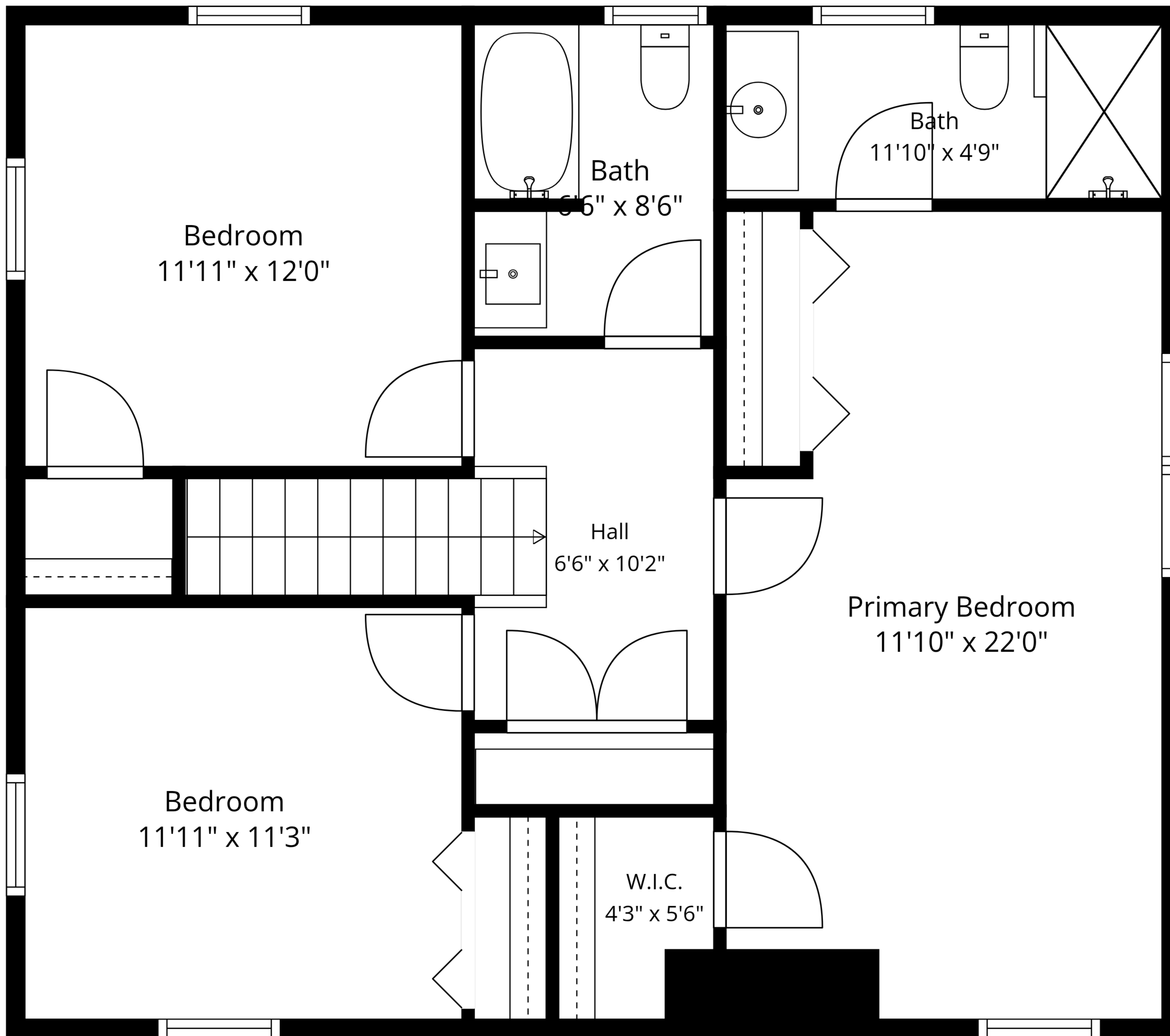
EXCLUDED AREAS: BASEMENT: 716 sq. ft, STORAGE: 206 sq. ft, PATIO: 655 sq. ft,
WALLS: 208 sq. ft



TOTAL: 1690 sq. ft

Basement: 0 sq. ft, 1st floor: 851 sq. ft, 2nd floor: 839 sq. ft

EXCLUDED AREAS: BASEMENT: 716 sq. ft, STORAGE: 206 sq. ft, PATIO: 655 sq. ft,
WALLS: 208 sq. ft

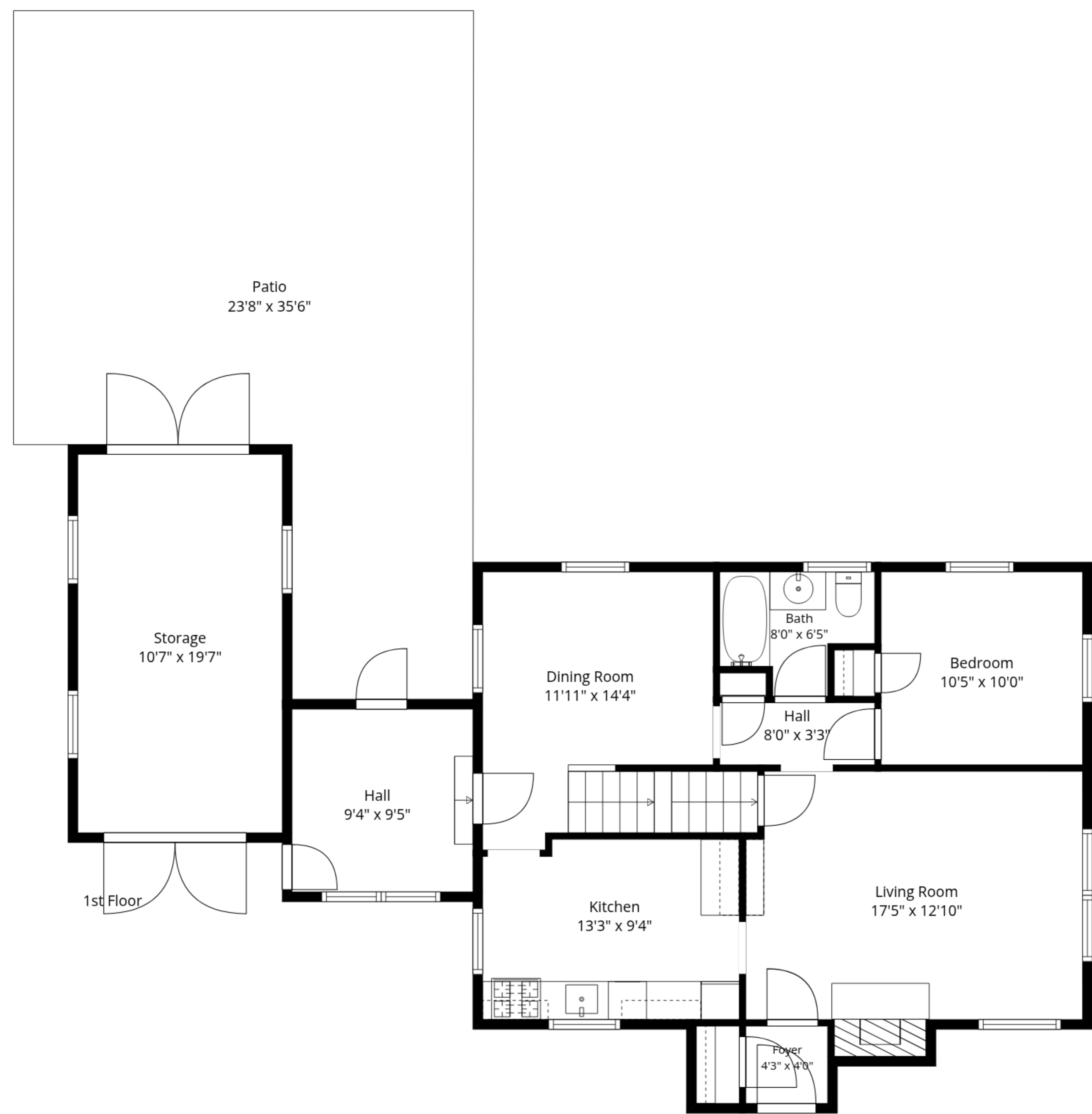


TOTAL: 1690 sq. ft

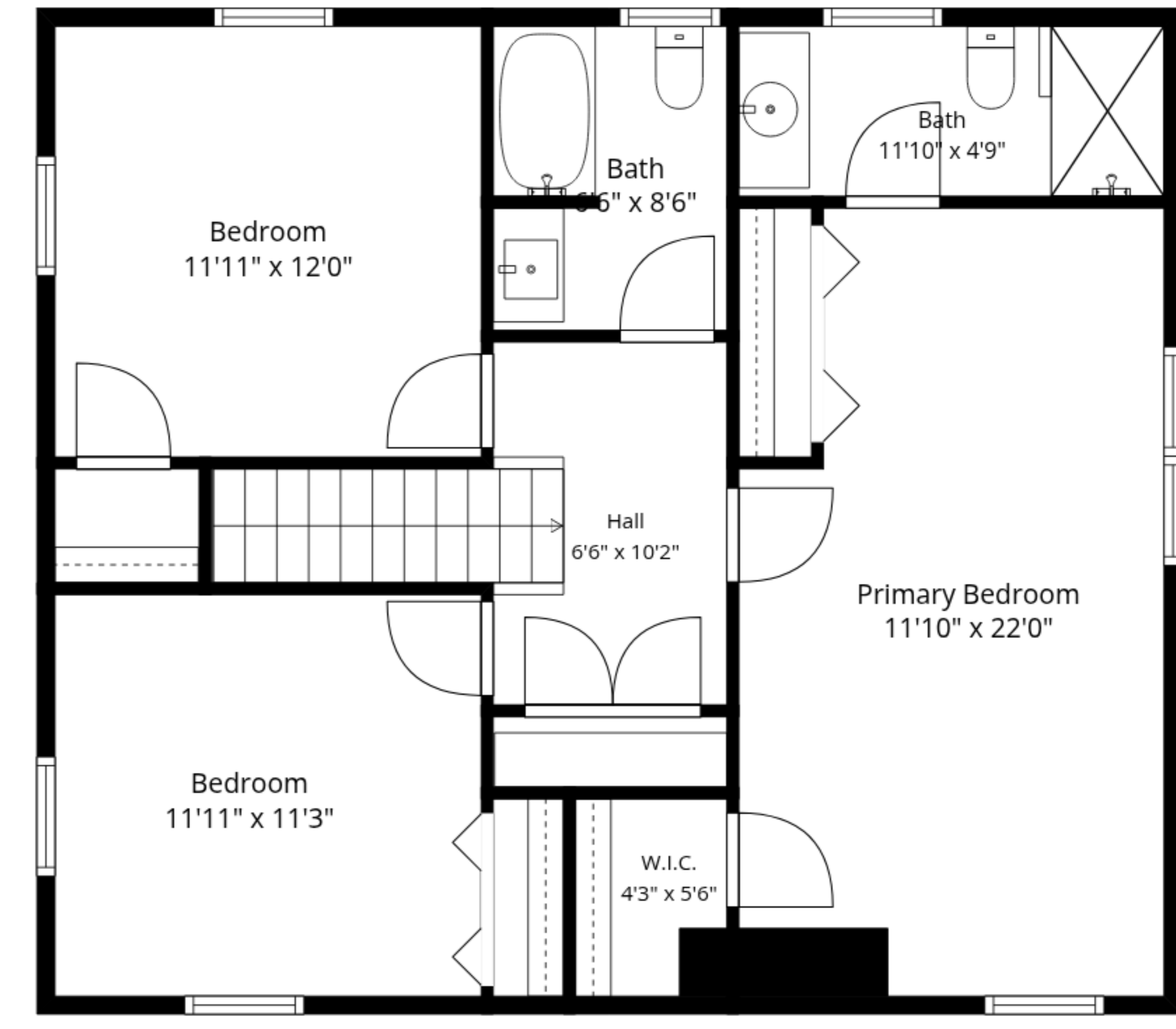
Basement: 0 sq. ft, 1st floor: 851 sq. ft, 2nd floor: 839 sq. ft

EXCLUDED AREAS: BASEMENT: 716 sq. ft, STORAGE: 206 sq. ft, PATIO: 655 sq. ft,

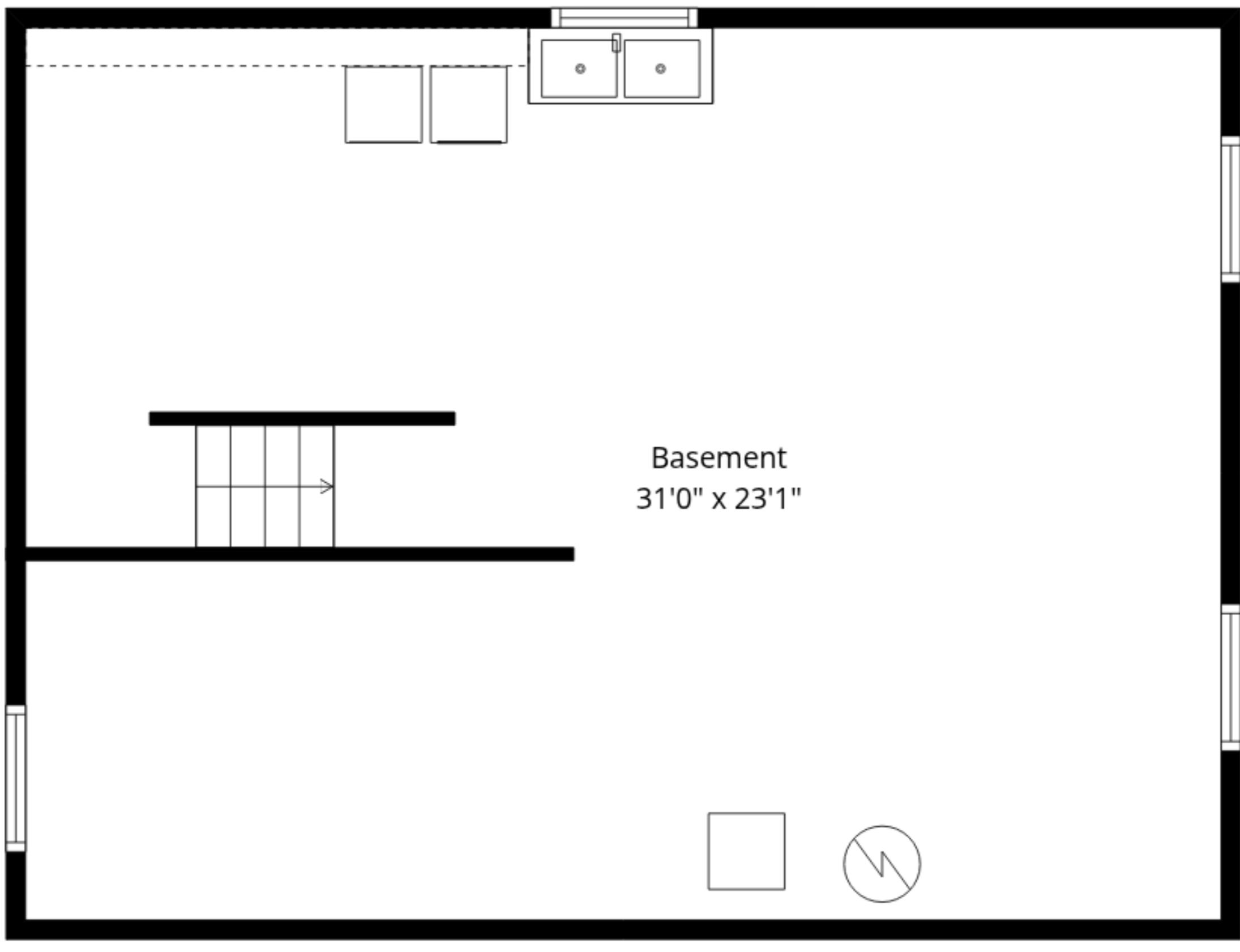
WALLS: 208 sq. ft



1st Floor



2nd Floor



Basement

TOTAL: 1690 sq. ft
 Basement: 0 sq. ft, 1st floor: 851 sq. ft, 2nd floor: 839 sq. ft
 EXCLUDED AREAS: BASEMENT: 716 sq. ft, STORAGE: 206 sq. ft, PATIO: 655 sq. ft,
 WALLS: 208 sq. ft

Measurements Are Approximate - Deemed Highly Reliable But Not Guaranteed