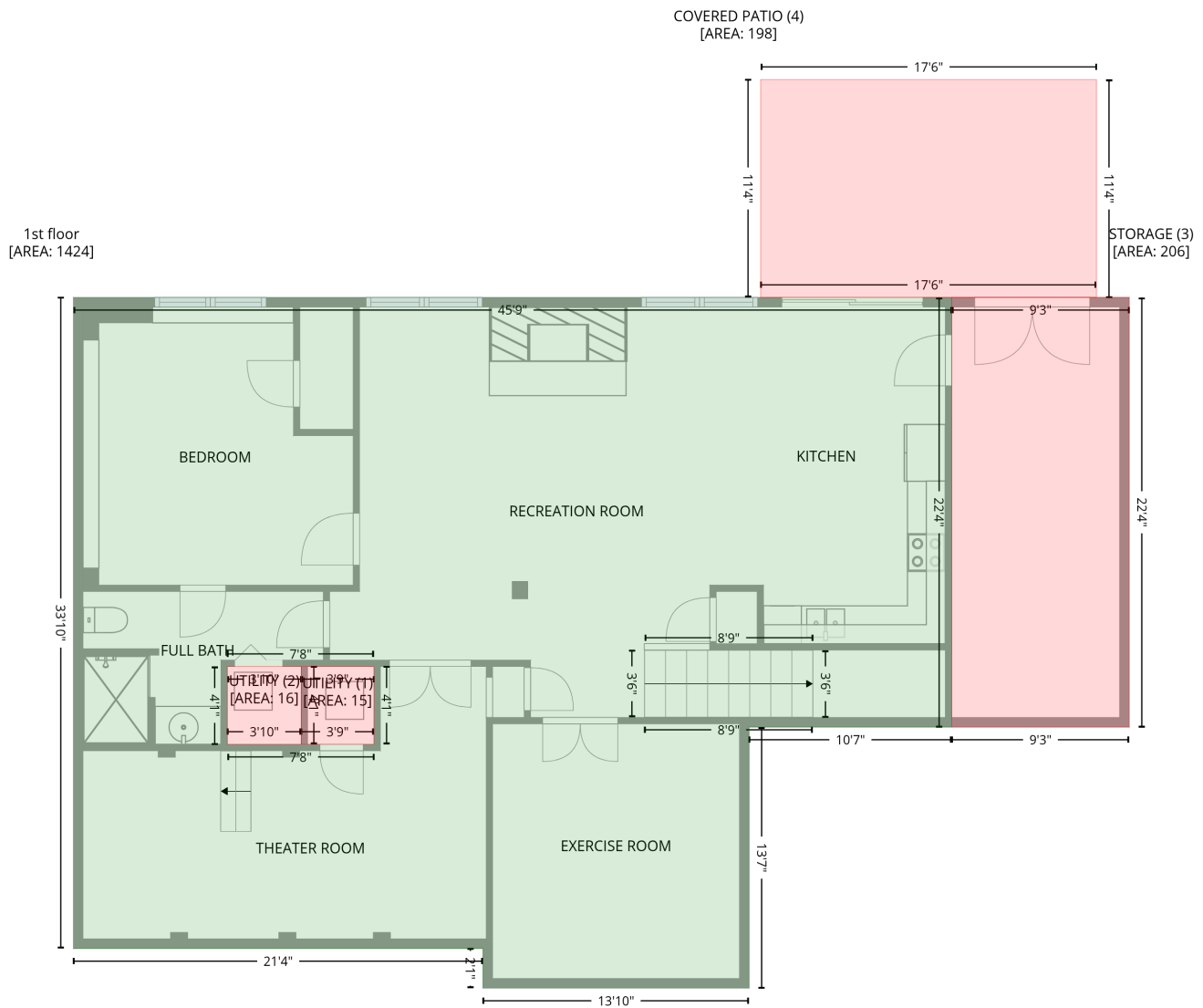


20101, Coachmans Wood Lane, Cornelius, NC, US, Coachmans Wood Lane

Gross Living Area: 4853 sq. ft

Level 1



Space	Area (sq. ft)	Calculation <small>Coordinate Polygon Area Algorithm using inches</small>
1st floor (Living area)	1424	$-\left((605.2 + 605.2) * (168.3 - 436.5) + (605.2 + 478.6) * (436.5 - 436.5) + (478.6 + 478.6) * (436.5 - 599.5) + (478.6 + 312.4) * (599.5 - 599.5) + (312.4 + 312.4) * (599.5 - 574.8) + (312.4 + 56.7) * (574.8 - 574.8) + (56.7 + 56.7) * (574.8 - 168.3) + (56.7 + 605.2) * (168.3 - 168.3)\right) * 0.5 + 0.00694 - \left((244.3 + 152.8) * (398.7 - 398.7) + (152.8 + 152.8) * (398.7 - 447.3) + (152.8 + 244.3) * (447.3 - 447.3) + (244.3 + 244.3) * (447.3 - 398.7)\right) * 0.5 + 0.00694$
UTILITY (Non-living area)	15	$-\left((244.3 + 244.3) * (398.7 - 447.3) + (244.3 + 198.9) * (447.3 - 447.3) + (198.9 + 198.9) * (447.3 - 398.7) + (198.9 + 244.3) * (398.7 - 398.7)\right) * 0.5 + 0.00694$
UTILITY (Non-living area)	16	$-\left((198.9 + 198.9) * (398.7 - 447.3) + (198.9 + 152.8) * (447.3 - 447.3) + (152.8 + 152.8) * (447.3 - 398.7) + (152.8 + 198.9) * (398.7 - 398.7)\right) * 0.5 + 0.00694$

20101,Coachmans Wood Lane,Cornelius,NC,US, Coachmans Wood Lane

Gross Living Area: 4853 sq. ft

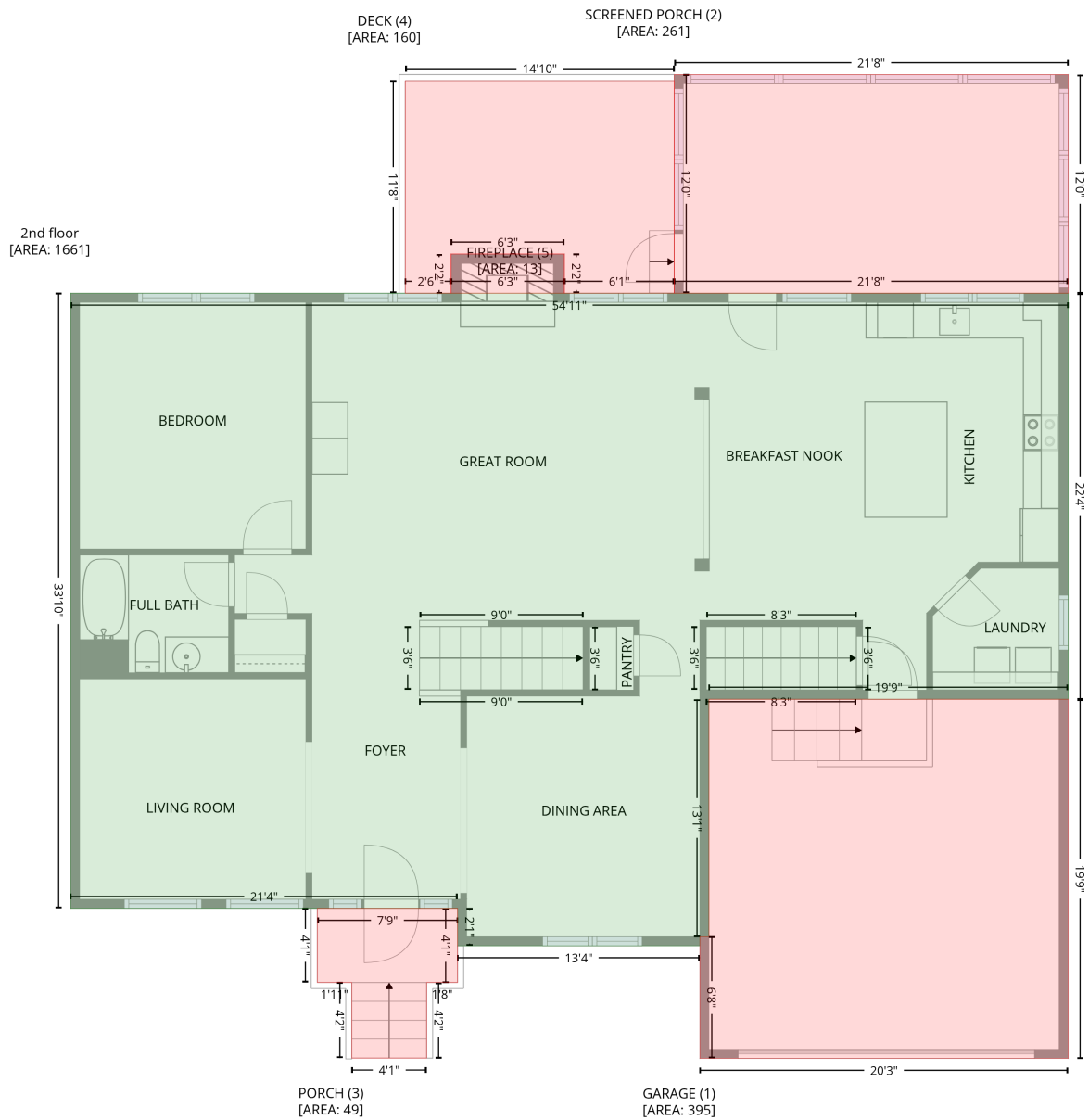
Level 1

Space	Area (sq. ft)	Calculation <small>Coordinate Polygon Area Algorithm using inches</small>
STORAGE (Non-living area)	206	$-\left((716 + 716) * (168.3 - 436.5) + (716 + 605.2) * (436.5 - 436.5) + (605.2 + 605.2) * (436.5 - 168.3) + (605.2 + 716) * (168.3 - 168.3)\right) * 0.5 * 0.00694$
COVERED PATIO (Non-living area)	198	$-\left((695.5 + 695.5) * (32.2 - 168.3) + (695.5 + 485.8) * (168.3 - 168.3) + (485.8 + 485.8) * (168.3 - 32.2) + (485.8 + 695.5) * (32.2 - 32.2)\right) * 0.5 * 0.00694$

20101, Coachmans Wood Lane, Cornelius, NC, US, Coachmans Wood Lane

Gross Living Area: 4853 sq. ft

Level 2



Space	Area (sq. ft)	Calculation
2nd floor (Living area)	1661	Coordinate Polygon Area Algorithm using inches $-\left((716 + 716) * (168.3 - 436.5) + (716 + 478.6) * (436.5 - 436.5) + (478.6 + 478.6) * (436.5 - 593.5) + (478.6 + 472.6) * (593.5 - 593.5) + (472.6 + 472.6) * (593.5 - 599.5) + (472.6 + 312.4) * (599.5 - 599.5) + (312.4 + 312.4) * (599.5 - 574.8) + (312.4 + 56.7) * (574.8 - 574.8) + (56.7 + 56.7) * (574.8 - 168.3) + (56.7 + 716) * (168.3 - 168.3)\right) * 0.5 * 0.00694$
GARAGE (Non-living area)	395	$-\left((716 + 716) * (436.5 - 673.9) + (716 + 472.6) * (673.9 - 673.9) + (472.6 + 472.6) * (673.9 - 593.5) + (472.6 + 478.6) * (593.5 - 593.5) + (478.6 + 478.6) * (593.5 - 436.5) + (478.6 + 716) * (436.5 - 436.5)\right) * 0.5 * 0.00694$

20101,Coachmans Wood Lane,Cornelius,NC,US, Coachmans Wood Lane

Gross Living Area: 4853 sq. ft

Level 2

Space	Area (sq. ft)	Calculation <small>Coordinate Polygon Area Algorithm using inches</small>
SCREENED PORCH (Non-living area)	261	$-\left((716 + 716) * (23.8 - 168.3) + (716 + 455.6) * (168.3 - 168.3) + (455.6 + 455.6) * (168.3 - 23.8) + (455.6 + 716) * (23.8 - 23.8)\right) * 0.5 * 0.00694$
PORCH (Non-living area)	49	$-\left((312.4 + 312.4) * (574.8 - 623.7) + (312.4 + 292) * (623.7 - 623.7) + (292 + 292) * (623.7 - 673.7) + (292 + 242.5) * (673.7 - 673.7) + (242.5 + 242.5) * (673.7 - 623.7) + (242.5 + 219.7) * (623.7 - 623.7) + (219.7 + 219.7) * (623.7 - 574.8) + (219.7 + 312.4) * (574.8 - 574.8)\right) * 0.5 * 0.00694$
DECK (Non-living area)	160	$-\left((455.6 + 455.6) * (27.8 - 168.3) + (455.6 + 383) * (168.3 - 168.3) + (383 + 383) * (168.3 - 142.4) + (383 + 308.1) * (142.4 - 142.4) + (308.1 + 308.1) * (142.4 - 168.3) + (308.1 + 277.8) * (168.3 - 168.3) + (277.8 + 277.8) * (168.3 - 27.8) + (277.8 + 455.6) * (27.8 - 27.8)\right) * 0.5 * 0.00694$
FIREPLACE (Non-living area)	13	$-\left((383 + 383) * (142.4 - 168.3) + (383 + 308.1) * (168.3 - 168.3) + (308.1 + 308.1) * (168.3 - 142.4) + (308.1 + 383) * (142.4 - 142.4)\right) * 0.5 * 0.00694$

20101, Coachmans Wood Lane, Cornelius, NC, US, Coachmans Wood Lane

Gross Living Area: 4853 sq. ft

Level 3



Space	Area (sq. ft)	Calculation <small>Coordinate Polygon Area Algorithm using inches</small>
3rd floor (Living area)	1768	$-((216.2 + 216.2) * (168.3 - 331.5) + (216.2 + 470.9) * (331.5 - 331.5) + (470.9 + 470.9) * (331.5 - 168.3) + (470.9 + 716) * (168.3 - 168.3) + (716 + 716) * (168.3 - 674.3) + (716 + 472.6) * (674.3 - 674.3) + (472.6 + 472.6) * (674.3 - 599.5) + (472.6 + 312.4) * (599.5 - 599.5) + (312.4 + 312.4) * (599.5 - 574.8) + (312.4 + 56.7) * (574.8 - 574.8) + (56.7 + 56.7) * (574.8 - 168.3) + (56.7 + 216.2) * (168.3 - 168.3)) * 0.5 * 0.00694$
OPEN TO BELOW (Non-living area)	289	$-((470.9 + 470.9) * (168.3 - 331.5) + (470.9 + 216.2) * (331.5 - 331.5) + (216.2 + 216.2) * (331.5 - 168.3) + (216.2 + 470.9) * (168.3 - 168.3)) * 0.5 * 0.00694$