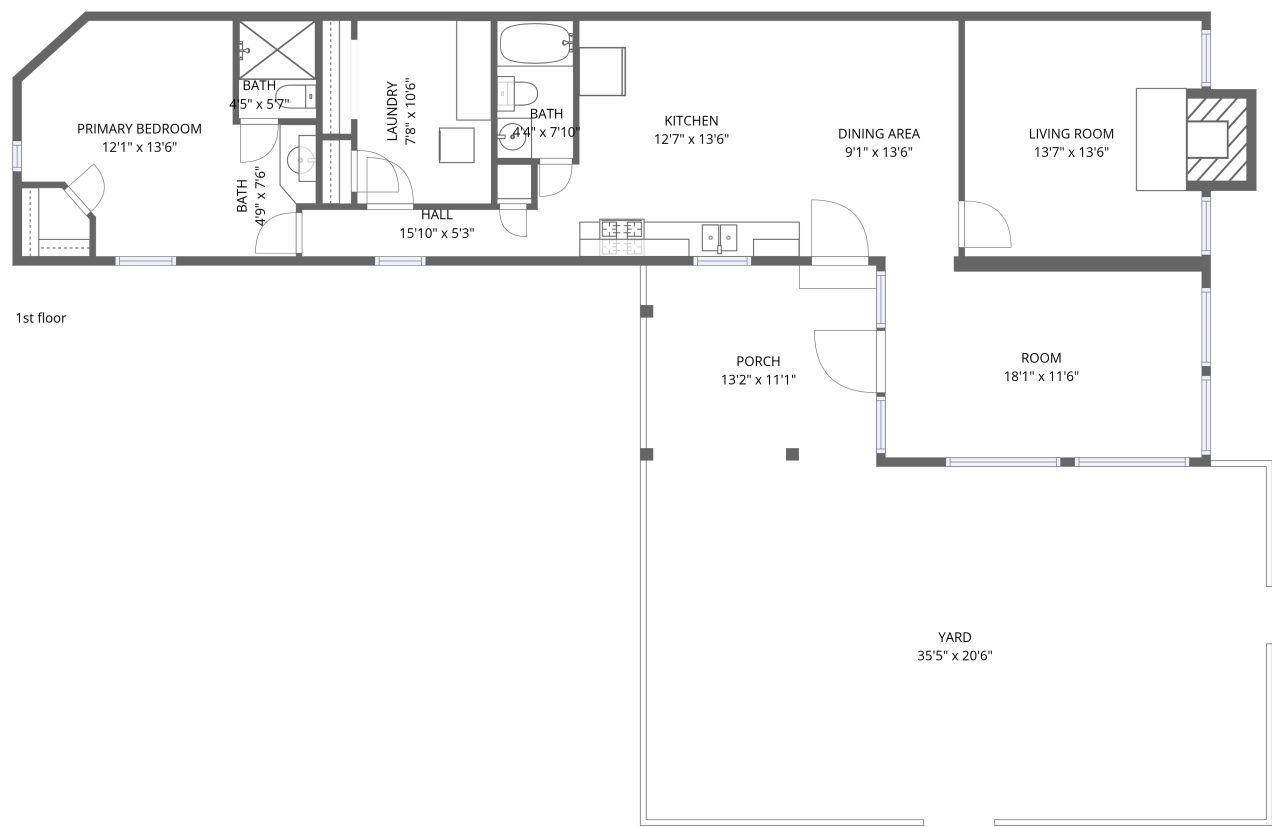


104 Guthrie Lane, Taos, Taos County, New Mexico, United States, 87571, A



Total Area: 1101 sq. ft


1st Floor: 1101 sq. ft

Excluded: Porch 147 sq. ft, Undefined 10 sq. ft, Fireplace 15 sq. ft, Walls: 89 sq. ft

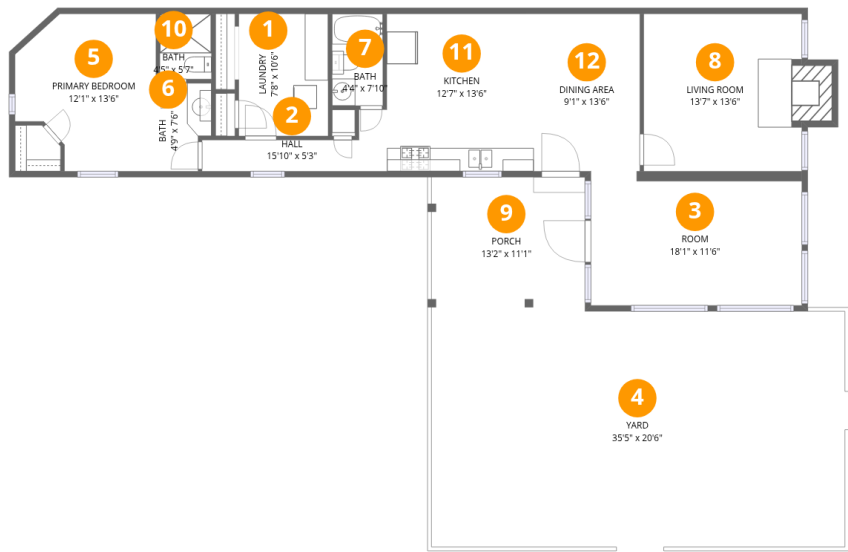
Property summary

 1 Floors

 1 Bedrooms

 2 Bathrooms

104 Guthrie Lane, Taos, Taos County, New Mexico, United States, 87571, A



Room dimensions

Floor 1 Total:1101sqft   Excluded: 172sqft

#		Dimensions	sqft	Counted as living area
1	Laundry	7'8" x 10'6"	80 sq. ft	Yes
2	Hall	15'10" x 5'3"	83 sq. ft	Yes
3	Room	18'1" x 11'6"	207 sq. ft	Yes
4	Yard	35'5" x 20'6"	725 sq. ft	No
5	Primary Bedroom	12'1" x 13'6"	163 sq. ft	Yes
6	Bath	4'9" x 7'6"	36 sq. ft	Yes
7	Bath	4'4" x 7'10"	34 sq. ft	Yes
8	Living Room	13'7" x 13'6"	182 sq. ft	Yes
9	Porch	13'2" x 11'1"	146 sq. ft	No
10	Bath	4'5" x 5'7"	25 sq. ft	Yes
11	Kitchen	12'7" x 13'6"	169 sq. ft	Yes

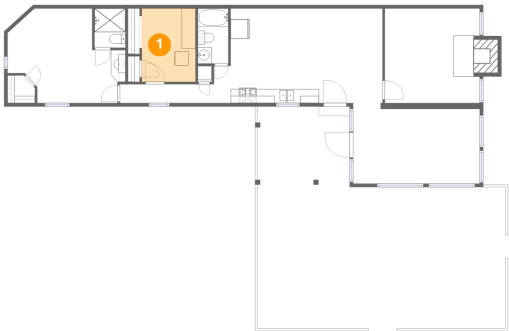
Home data report

104 Guthrie Lane, Taos, Taos County, New Mexico, United States, 87571, A

#		Dimensions	sqft	Counted as living area
12	Dining Area	9'1" x 13'6"	123 sq. ft	Yes

104 Guthrie Lane, Taos, Taos County, New Mexico, United States, 87571, A

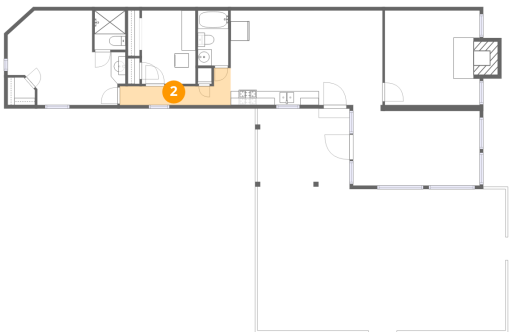
1 Floor 1 - Laundry



Dimensions: 7'8" x 10'6"  
Area: 80 sq. ft  
Counted as living area: Yes

Heated: Yes  
Finished: Yes  
Enclosed: Yes  
Contiguous: Yes  
Permitted: Yes  
Wet space: No  
Addition: No  
Conversion: No

2 Floor 1 - Hall



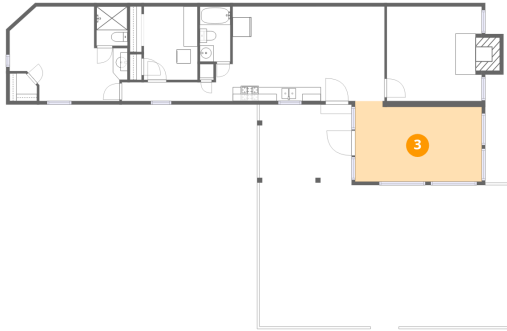
Dimensions: 15'10" x 5'3"  
Area: 83 sq. ft  
Counted as living area: Yes

Heated: Yes  
Finished: Yes  
Enclosed: Yes  
Contiguous: Yes  
Permitted: Yes  
Wet space: No  
Addition: No  
Conversion: No

## Home data report

104 Guthrie Lane, Taos, Taos County, New Mexico, United States, 87571, A

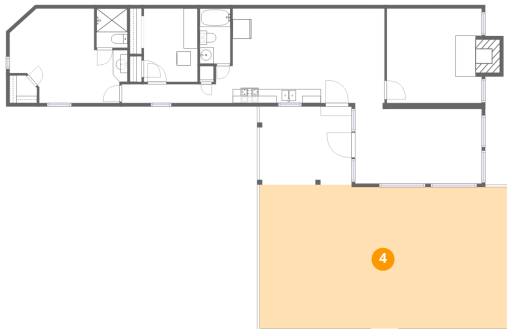
### 3 Floor 1 - Room



Dimensions: 18'1" x 11'6"  
Area: 207 sq. ft  
Counted as living area: Yes

Heated: Yes  
Finished: Yes  
Enclosed: Yes  
Contiguous: Yes  
Permitted: Yes  
Wet space: No  
Addition: No  
Conversion: No

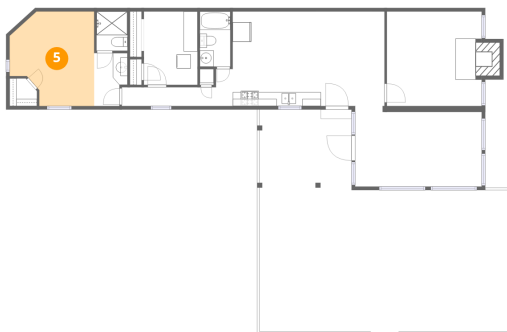
### 4 Floor 1 - Yard



Dimensions: 35'5" x 20'6"  
Area: 725 sq. ft  
Counted as living area: No

Heated: No  
Finished: No  
Enclosed: No  
Contiguous: Yes  
Permitted: No  
Wet space: No  
Addition: No  
Conversion: No

### 5 Floor 1 - Primary Bedroom



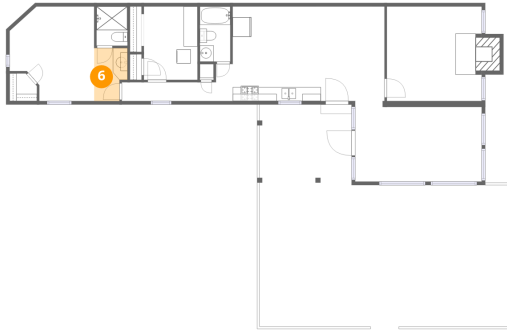
Dimensions: 12'1" x 13'6"  
Area: 163 sq. ft  
Counted as living area: Yes

Heated: Yes  
Finished: Yes  
Enclosed: Yes  
Contiguous: Yes  
Permitted: Yes  
Wet space: No  
Addition: No  
Conversion: No

## Home data report

104 Guthrie Lane, Taos, Taos County, New Mexico, United States, 87571, A

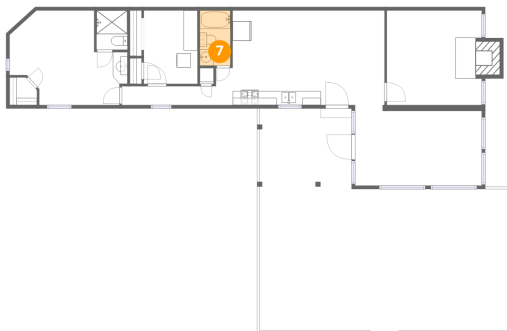
### 6 Floor 1 - Bath



Dimensions: 4'9" x 7'6"  
Area: 36 sq. ft  
Counted as living area: Yes

Heated: Yes  
Finished: Yes  
Enclosed: Yes  
Contiguous: Yes  
Permitted: Yes  
Wet space: Yes  
Addition: No  
Conversion: No

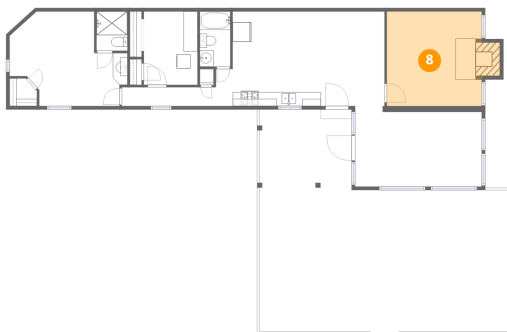
### 7 Floor 1 - Bath



Dimensions: 4'4" x 7'10"  
Area: 34 sq. ft  
Counted as living area: Yes

Heated: Yes  
Finished: Yes  
Enclosed: Yes  
Contiguous: Yes  
Permitted: Yes  
Wet space: Yes  
Addition: No  
Conversion: No

### 8 Floor 1 - Living Room



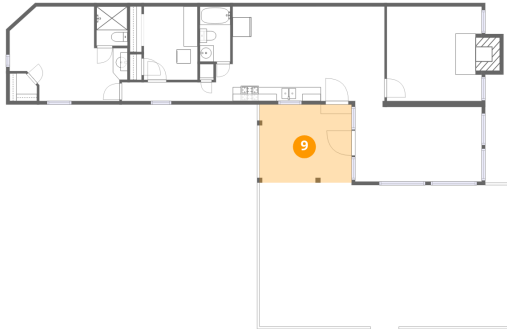
Dimensions: 13'7" x 13'6"  
Area: 182 sq. ft  
Counted as living area: Yes

Heated: Yes  
Finished: Yes  
Enclosed: Yes  
Contiguous: Yes  
Permitted: Yes  
Wet space: No  
Addition: No  
Conversion: No

## Home data report

104 Guthrie Lane, Taos, Taos County, New Mexico, United States, 87571, A

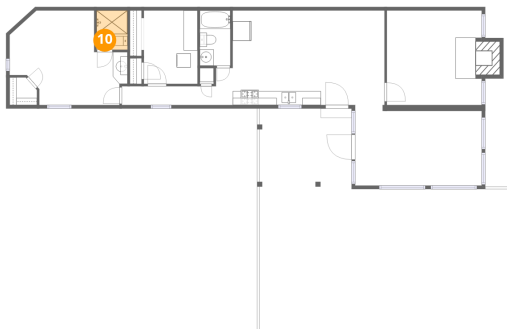
### 9 Floor 1 - Porch



Dimensions: 13'2" x 11'1"  
Area: 146 sq. ft  
Counted as living area: No

Heated: No  
Finished: No  
Enclosed: No  
Contiguous: Yes  
Permitted: Yes  
Wet space: No  
Addition: No  
Conversion: No

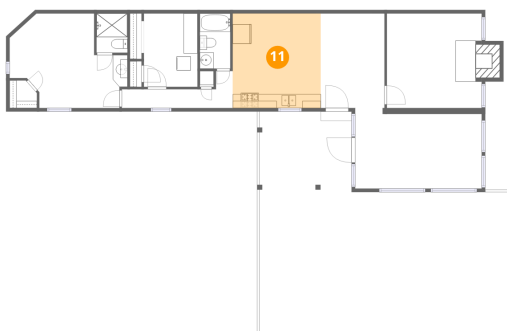
### 10 Floor 1 - Bath



Dimensions: 4'5" x 5'7"  
Area: 25 sq. ft  
Counted as living area: Yes

Heated: Yes  
Finished: Yes  
Enclosed: Yes  
Contiguous: Yes  
Permitted: Yes  
Wet space: Yes  
Addition: No  
Conversion: No

### 11 Floor 1 - Kitchen



Dimensions: 12'7" x 13'6"  
Area: 169 sq. ft  
Counted as living area: Yes

Heated: Yes  
Finished: Yes  
Enclosed: Yes  
Contiguous: Yes  
Permitted: Yes  
Wet space: No  
Addition: No  
Conversion: No

104 Guthrie Lane, Taos, Taos County, New Mexico, United States, 87571, A

12 Floor 1 - Dining Area



Dimensions: 9'1" x 13'6"  
Area: 123 sq. ft  
Counted as living area: Yes

Heated: Yes  
Finished: Yes  
Enclosed: Yes  
Contiguous: Yes  
Permitted: Yes  
Wet space: No  
Addition: No  
Conversion: No