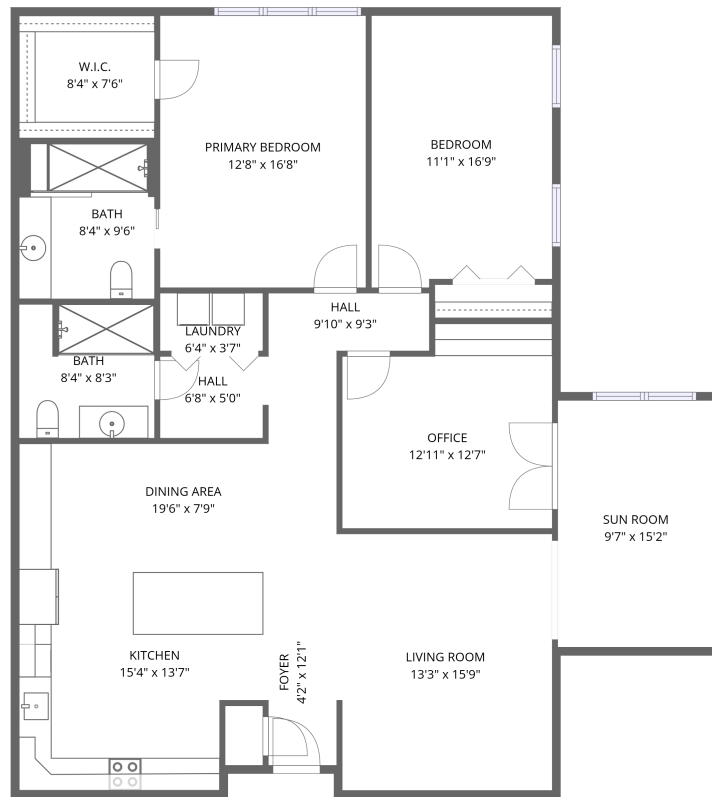


Home data report

**2208 South Jefferson Street, South Roanoke, Roanoke,
Roanoke city, Virginia, United States, 24014, 210**



MAIN LEVEL

Total Area: 1700 sq. ft

1st Floor: 1700 sq. ft

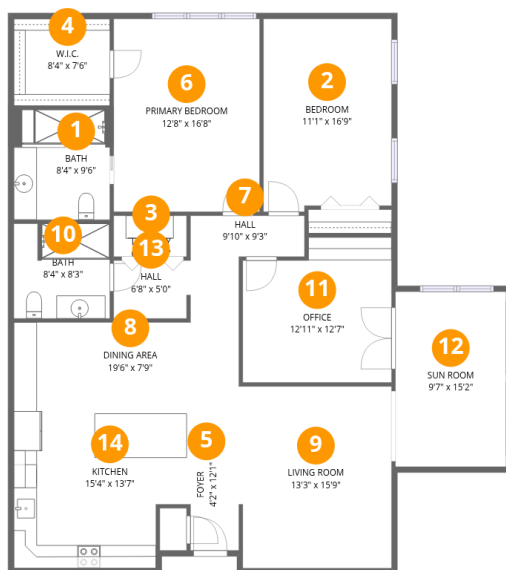
Excluded: Walls: 0 sq. ft

Property summary



Home data report

2208 South Jefferson Street, South Roanoke, Roanoke,
Roanoke city, Virginia, United States, 24014, 210



Room dimensions

Floor 1

Total:1700sqft Excluded: 0sqft

#		Dimensions	sqft	Counted as living area
1	Bath	8'4" x 9'6"	79 sq. ft	Yes
2	Bedroom	11'1" x 16'9"	186 sq. ft	Yes
3	Laundry	6'4" x 3'7"	22 sq. ft	Yes
4	W.I.C.	8'4" x 7'6"	63 sq. ft	Yes
5	Foyer	4'2" x 12'1"	51 sq. ft	Yes
6	Primary Bedroom	12'8" x 16'8"	211 sq. ft	Yes
7	Hall	9'10" x 9'3"	91 sq. ft	Yes
8	Dining Area	19'6" x 7'9"	151 sq. ft	Yes
9	Living Room	13'3" x 15'9"	209 sq. ft	Yes
10	Bath	8'4" x 8'3"	69 sq. ft	Yes
11	Office	12'11" x 12'7"	163 sq. ft	Yes

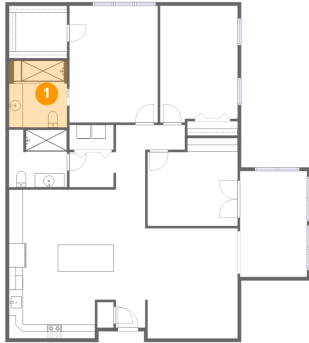
Home data report

**2208 South Jefferson Street, South Roanoke, Roanoke,
Roanoke city, Virginia, United States, 24014, 210**

#		Dimensions	sqft	Counted as living area
12	Sun Room	9'7" x 15'2"	146 sq. ft	Yes
13	Hall	6'8" x 5'0"	33 sq. ft	Yes
14	Kitchen	15'4" x 13'7"	208 sq. ft	Yes

2208 South Jefferson Street, South Roanoke, Roanoke,
Roanoke city, Virginia, United States, 24014, 210

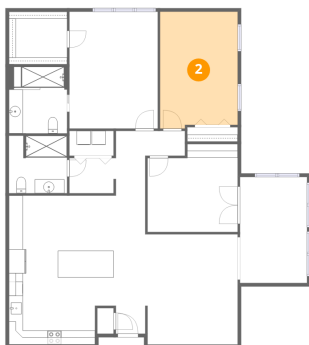
1 Floor 1 - Bath



Dimensions: 8'4" x 9'6"
Area: 79 sq. ft
Counted as living area: Yes

Heated: Yes
Finished: Yes
Enclosed: Yes
Contiguous: Yes
Permitted: Yes
Wet space: Yes
Addition: No
Conversion: No

2 Floor 1 - Bedroom

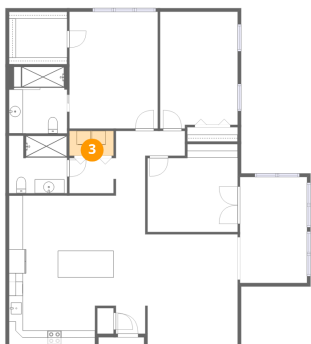


Dimensions: 11'1" x 16'9"
Area: 186 sq. ft
Counted as living area: Yes

Heated: Yes
Finished: Yes
Enclosed: Yes
Contiguous: Yes
Permitted: Yes
Wet space: No
Addition: No
Conversion: No

2208 South Jefferson Street, South Roanoke, Roanoke,
Roanoke city, Virginia, United States, 24014, 210

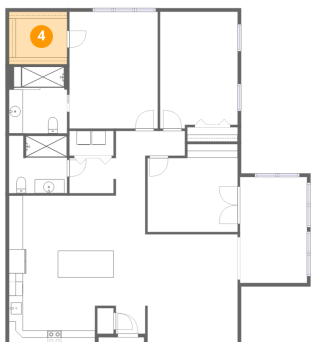
3 Floor 1 - Laundry



Dimensions: 6'4" x 3'7"
Area: 22 sq. ft
Counted as living area: Yes

Heated: Yes
Finished: Yes
Enclosed: Yes
Contiguous: Yes
Permitted: Yes
Wet space: No
Addition: No
Conversion: No

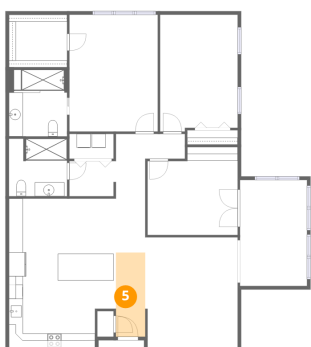
4 Floor 1 - W.I.C.



Dimensions: 8'4" x 7'6"
Area: 63 sq. ft
Counted as living area: Yes

Heated: Yes
Finished: Yes
Enclosed: Yes
Contiguous: Yes
Permitted: Yes
Wet space: No
Addition: No
Conversion: No

5 Floor 1 - Foyer

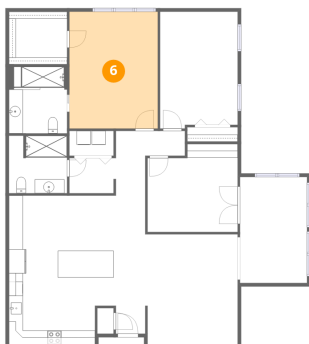


Dimensions: 4'2" x 12'1"
Area: 51 sq. ft
Counted as living area: Yes

Heated: Yes
Finished: Yes
Enclosed: Yes
Contiguous: Yes
Permitted: Yes
Wet space: No
Addition: No
Conversion: No

2208 South Jefferson Street, South Roanoke, Roanoke,
Roanoke city, Virginia, United States, 24014, 210

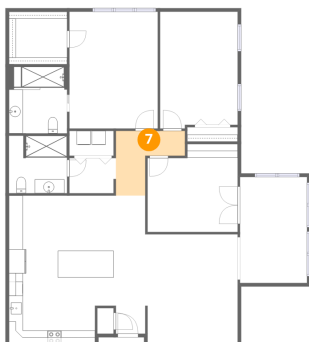
6 Floor 1 - Primary Bedroom



Dimensions: 12'8" x 16'8"
Area: 211 sq. ft
Counted as living area: Yes

Heated: Yes
Finished: Yes
Enclosed: Yes
Contiguous: Yes
Permitted: Yes
Wet space: No
Addition: No
Conversion: No

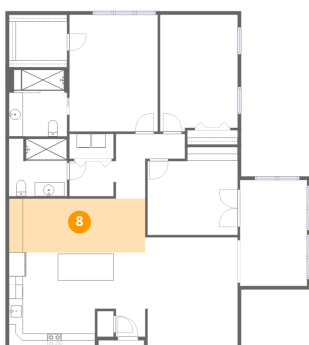
7 Floor 1 - Hall



Dimensions: 9'10" x 9'3"
Area: 91 sq. ft
Counted as living area: Yes

Heated: Yes
Finished: Yes
Enclosed: Yes
Contiguous: Yes
Permitted: Yes
Wet space: No
Addition: No
Conversion: No

8 Floor 1 - Dining Area

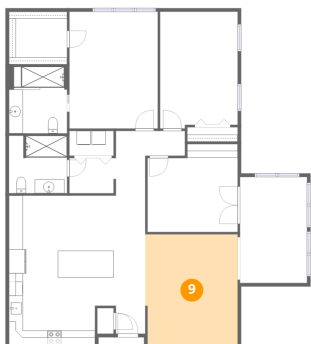


Dimensions: 19'6" x 7'9"
Area: 151 sq. ft
Counted as living area: Yes

Heated: Yes
Finished: Yes
Enclosed: Yes
Contiguous: Yes
Permitted: Yes
Wet space: No
Addition: No
Conversion: No

2208 South Jefferson Street, South Roanoke, Roanoke,
Roanoke city, Virginia, United States, 24014, 210

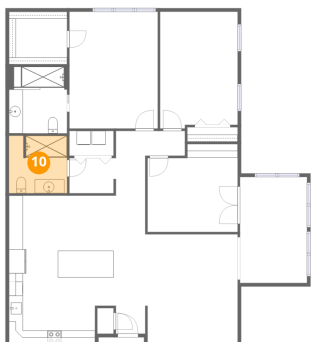
9 Floor 1 - Living Room



Dimensions: 13'3" x 15'9"
Area: 209 sq. ft
Counted as living area: Yes

Heated: Yes
Finished: Yes
Enclosed: Yes
Contiguous: Yes
Permitted: Yes
Wet space: No
Addition: No
Conversion: No

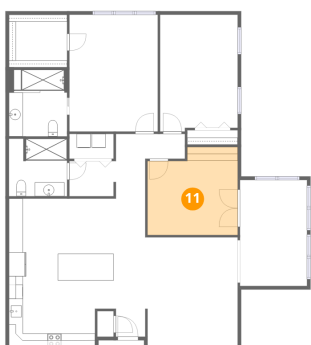
10 Floor 1 - Bath



Dimensions: 8'4" x 8'3"
Area: 69 sq. ft
Counted as living area: Yes

Heated: Yes
Finished: Yes
Enclosed: Yes
Contiguous: Yes
Permitted: Yes
Wet space: Yes
Addition: No
Conversion: No

11 Floor 1 - Office

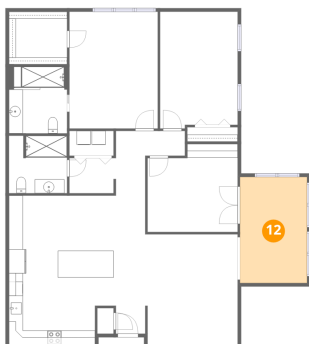


Dimensions: 12'11" x 12'7"
Area: 163 sq. ft
Counted as living area: Yes

Heated: Yes
Finished: Yes
Enclosed: Yes
Contiguous: Yes
Permitted: Yes
Wet space: No
Addition: No
Conversion: No

2208 South Jefferson Street, South Roanoke, Roanoke,
Roanoke city, Virginia, United States, 24014, 210

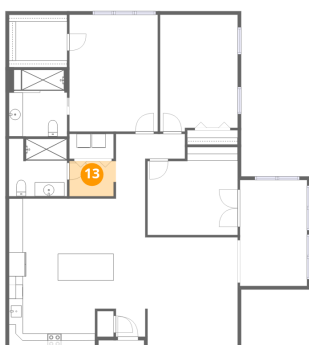
12 Floor 1 - Sun Room



Dimensions: 9'7" x 15'2"
Area: 146 sq. ft
Counted as living area: Yes

Heated: Yes
Finished: Yes
Enclosed: Yes
Contiguous: Yes
Permitted: Yes
Wet space: No
Addition: No
Conversion: No

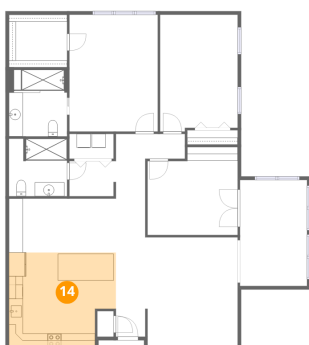
13 Floor 1 - Hall



Dimensions: 6'8" x 5'0"
Area: 33 sq. ft
Counted as living area: Yes

Heated: Yes
Finished: Yes
Enclosed: Yes
Contiguous: Yes
Permitted: Yes
Wet space: No
Addition: No
Conversion: No

14 Floor 1 - Kitchen



Dimensions: 15'4" x 13'7"
Area: 208 sq. ft
Counted as living area: Yes

Heated: Yes
Finished: Yes
Enclosed: Yes
Contiguous: Yes
Permitted: Yes
Wet space: No
Addition: No
Conversion: No