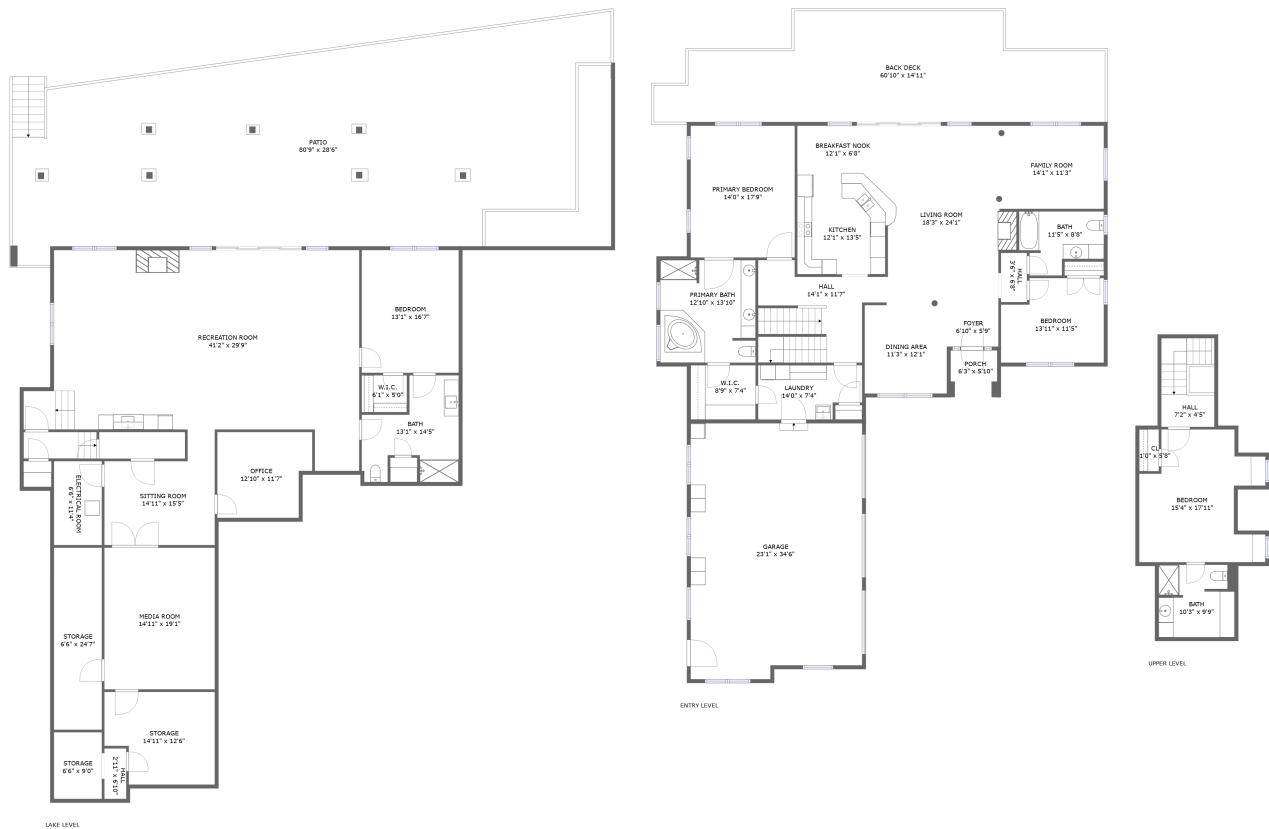


Home report

325 Bull Run Trail, Penhook, Franklin County, Virginia, United States, 24137



Total Area: 5132 sq. ft

Floor 1: 2706 sq. ft, Floor 2: 2046 sq. ft, Floor 3: 380 sq. ft

Excluded: Patio 2117 sq. ft, Garage 775 sq. ft, Porch 37 sq. ft, Back deck 714 sq. ft, Low ceiling 74 sq. ft, Walls: 370 sq. ft

Property summary

3 Floors

4 Bedrooms

4 Bathrooms

1 Garages

325 Bull Run Trail, Penhook, Franklin County, Virginia, United States, 24137



Room dimensions

Floor 1 Total:2706sqft Excluded: 2117sqft

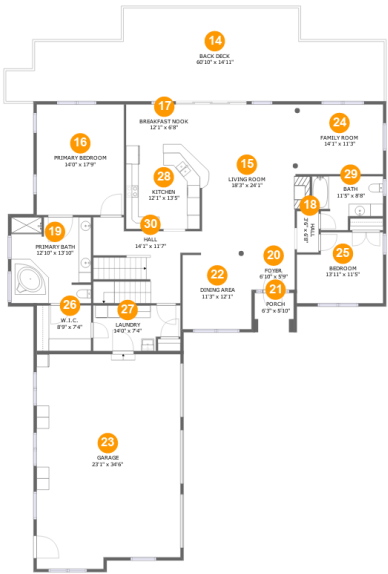
#		Max Dimensions	sqft	Included
1	W.I.C.	6'1" x 5'0"	30 sq. ft	Yes
2	Hall	2'11" x 6'10"	20 sq. ft	Yes
3	Bedroom	13'1" x 16'7"	217 sq. ft	Yes
4	Patio	80'9" x 28'6"	2117 sq. ft	No
5	Media Room	14'11" x 19'1"	285 sq. ft	Yes
6	Electrical Room	6'6" x 11'4"	73 sq. ft	Yes
7	Bath	13'1" x 14'5"	138 sq. ft	Yes
8	Recreation Room	41'2" x 29'9"	1052 sq. ft	Yes
9	Storage	6'6" x 24'7"	159 sq. ft	Yes
10	Sitting Room	14'11" x 15'5"	184 sq. ft	Yes
11	Storage	14'11" x 12'6"	169 sq. ft	Yes

Home report

325 Bull Run Trail, Penhook, Franklin County, Virginia, United States, 24137

#		Max Dimensions	sqft	Included
12	Office	12'10" x 11'7"	137 sq. ft	Yes
13	Storage	6'6" x 9'0"	58 sq. ft	Yes

325 Bull Run Trail, Penhook, Franklin County, Virginia, United States, 24137



Room dimensions

Floor 2 Total:2046sqft Excluded: 1526sqft

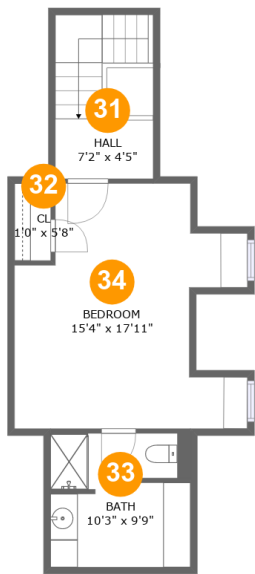
#		Max Dimensions	sqft	Included
14	Back Deck	60'10" x 14'11"	714 sq. ft	No
15	Living Room	18'3" x 24'1"	386 sq. ft	Yes
16	Primary Bedroom	14'0" x 17'9"	250 sq. ft	Yes
17	Breakfast Nook	12'1" x 6'8"	81 sq. ft	Yes
18	Hall	3'6" x 6'8"	23 sq. ft	Yes
19	Primary Bath	12'10" x 13'10"	176 sq. ft	Yes
20	Foyer	6'10" x 5'9"	39 sq. ft	Yes
21	Porch	6'3" x 5'10"	37 sq. ft	No
22	Dining Area	11'3" x 12'1"	134 sq. ft	Yes
23	Garage	23'1" x 34'6"	775 sq. ft	No
24	Family Room	14'1" x 11'3"	158 sq. ft	Yes

Home report

325 Bull Run Trail, Penhook, Franklin County, Virginia, United States, 24137

#		Max Dimensions	sqft	Included
25	Bedroom	13'11" x 11'5"	145 sq. ft	Yes
26	W.I.C.	8'9" x 7'4"	64 sq. ft	Yes
27	Laundry	14'0" x 7'4"	94 sq. ft	Yes
28	Kitchen	12'1" x 13'5"	161 sq. ft	Yes
29	Bath	11'5" x 8'8"	81 sq. ft	Yes
30	Hall	14'1" x 11'7"	169 sq. ft	Yes

325 Bull Run Trail, Penhook, Franklin County, Virginia, United States, 24137



Room dimensions

Floor 3 Total:380sqft Excluded: 74sqft

#		Max Dimensions	sqft	Included
31	Hall	7'2" x 4'5"	86 sq. ft	Yes
32	Cl	1'0" x 5'8"	6 sq. ft	Yes
33	Bath	10'3" x 9'9"	71 sq. ft	Yes
34	Bedroom	15'4" x 17'11"	206 sq. ft	Yes

325 Bull Run Trail, Penhook, Franklin County, Virginia, United States, 24137

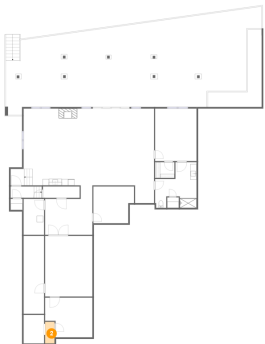
1 Floor 1 - W.I.C.



Max Dimensions: 6'1" x 5'0"
Calculated Area: 30 sq. ft
Included: Yes

Heated: Yes
Finished: Yes
Enclosed: Yes
Contiguous: Yes
Permitted: Yes
Wet space: No
Addition: No
Conversion: No

2 Floor 1 - Hall

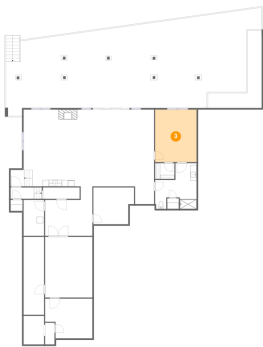


Max Dimensions: 2'11" x 6'10"
Calculated Area: 20 sq. ft
Included: No

Heated: Yes
Finished: Yes
Enclosed: Yes
Contiguous: No
Permitted: Yes
Wet space: No
Addition: No
Conversion: No

325 Bull Run Trail, Penhook, Franklin County, Virginia, United States, 24137

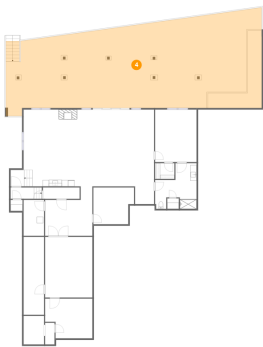
3 Floor 1 - Bedroom



Max Dimensions: 13'1" x 16'7"
Calculated Area: 217 sq. ft
Included: Yes

Heated: Yes
Finished: Yes
Enclosed: Yes
Contiguous: Yes
Permitted: Yes
Wet space: No
Addition: No
Conversion: No

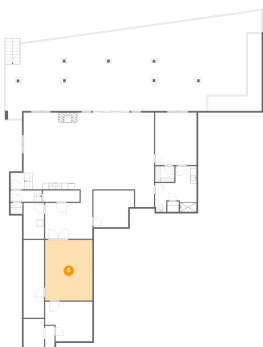
4 Floor 1 - Patio



Max Dimensions: 80'9" x 28'6"
Calculated Area: 2117 sq. ft
Included: No

Heated: No
Finished: Yes
Enclosed: No
Contiguous: Yes
Permitted: Yes
Wet space: No
Addition: No
Conversion: No

5 Floor 1 - Media Room



Max Dimensions: 14'11" x 19'1"
Calculated Area: 285 sq. ft
Included: Yes

Heated: Yes
Finished: Yes
Enclosed: Yes
Contiguous: Yes
Permitted: Yes
Wet space: No
Addition: No
Conversion: No

325 Bull Run Trail, Penhook, Franklin County, Virginia, United States, 24137

6 Floor 1 - Electrical Room



Max Dimensions: 6'6" x 11'4"
Calculated Area: 73 sq. ft
Included: Yes

Heated: Yes
Finished: Yes
Enclosed: Yes
Contiguous: Yes
Permitted: Yes
Wet space: No
Addition: No
Conversion: No

7 Floor 1 - Bath



Max Dimensions: 13'1" x 14'5"
Calculated Area: 138 sq. ft
Included: Yes

Heated: Yes
Finished: Yes
Enclosed: Yes
Contiguous: Yes
Permitted: Yes
Wet space: Yes
Addition: No
Conversion: No

8 Floor 1 - Recreation Room



Max Dimensions: 41'2" x 29'9"
Calculated Area: 1052 sq. ft
Included: Yes

Heated: Yes
Finished: Yes
Enclosed: Yes
Contiguous: Yes
Permitted: Yes
Wet space: No
Addition: No
Conversion: No

325 Bull Run Trail, Penhook, Franklin County, Virginia, United States, 24137

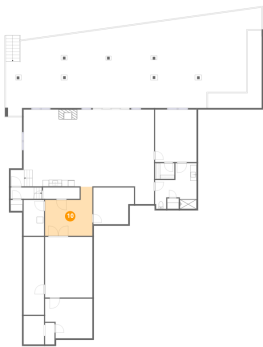
9 Floor 1 - Storage



Max Dimensions: 6'6" x 24'7"
Calculated Area: 159 sq. ft
Included: Yes

Heated: Yes
Finished: Yes
Enclosed: Yes
Contiguous: Yes
Permitted: Yes
Wet space: No
Addition: No
Conversion: No

10 Floor 1 - Sitting Room



Max Dimensions: 14'11" x 15'5"
Calculated Area: 184 sq. ft
Included: Yes

Heated: Yes
Finished: Yes
Enclosed: Yes
Contiguous: Yes
Permitted: Yes
Wet space: No
Addition: No
Conversion: No

11 Floor 1 - Storage

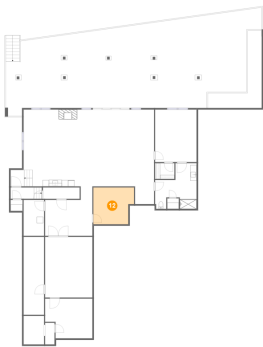


Max Dimensions: 14'11" x 12'6"
Calculated Area: 169 sq. ft
Included: Yes

Heated: Yes
Finished: Yes
Enclosed: Yes
Contiguous: Yes
Permitted: Yes
Wet space: No
Addition: No
Conversion: No

325 Bull Run Trail, Penhook, Franklin County, Virginia, United States, 24137

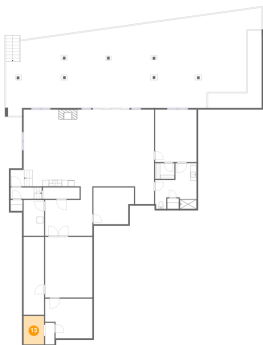
12 Floor 1 - Office



Max Dimensions: 12'10" x 11'7"
Calculated Area: 137 sq. ft
Included: Yes

Heated: Yes
Finished: Yes
Enclosed: Yes
Contiguous: Yes
Permitted: Yes
Wet space: No
Addition: No
Conversion: No

13 Floor 1 - Storage



Max Dimensions: 6'6" x 9'0"
Calculated Area: 58 sq. ft
Included: No

Heated: Yes
Finished: Yes
Enclosed: Yes
Contiguous: No
Permitted: Yes
Wet space: No
Addition: No
Conversion: No

14 Floor 2 - Back Deck



Max Dimensions: 60'10" x 14'11"
Calculated Area: 714 sq. ft
Included: No

Heated: No
Finished: Yes
Enclosed: No
Contiguous: No
Permitted: Yes
Wet space: No
Addition: No
Conversion: No

325 Bull Run Trail, Penhook, Franklin County, Virginia, United States, 24137

15 Floor 2 - Living Room



Max Dimensions: 18'3" x 24'1"
Calculated Area: 386 sq. ft
Included: Yes

Heated: Yes
Finished: Yes
Enclosed: Yes
Contiguous: Yes
Permitted: Yes
Wet space: No
Addition: No
Conversion: No

16 Floor 2 - Primary Bedroom



Max Dimensions: 14'0" x 17'9"
Calculated Area: 250 sq. ft
Included: Yes

Heated: Yes
Finished: Yes
Enclosed: Yes
Contiguous: Yes
Permitted: Yes
Wet space: No
Addition: No
Conversion: No

17 Floor 2 - Breakfast Nook



Max Dimensions: 12'1" x 6'8"
Calculated Area: 81 sq. ft
Included: Yes

Heated: Yes
Finished: Yes
Enclosed: Yes
Contiguous: Yes
Permitted: Yes
Wet space: No
Addition: No
Conversion: No

325 Bull Run Trail, Penhook, Franklin County, Virginia, United States, 24137

18 Floor 2 - Hall



Max Dimensions: 3'6" x 6'8"
Calculated Area: 23 sq. ft
Included: Yes

Heated: Yes
Finished: Yes
Enclosed: Yes
Contiguous: Yes
Permitted: Yes
Wet space: No
Addition: No
Conversion: No

19 Floor 2 - Primary Bath



Max Dimensions: 12'10" x 13'10"
Calculated Area: 176 sq. ft
Included: Yes

Heated: Yes
Finished: Yes
Enclosed: Yes
Contiguous: Yes
Permitted: Yes
Wet space: Yes
Addition: No
Conversion: No

20 Floor 2 - Foyer



Max Dimensions: 6'10" x 5'9"
Calculated Area: 39 sq. ft
Included: Yes

Heated: Yes
Finished: Yes
Enclosed: Yes
Contiguous: Yes
Permitted: Yes
Wet space: No
Addition: No
Conversion: No

325 Bull Run Trail, Penhook, Franklin County, Virginia, United States, 24137

21 Floor 2 - Porch



Max Dimensions: 6'3" x 5'10"
Calculated Area: 37 sq. ft
Included: No

Heated: No
Finished: Yes
Enclosed: No
Contiguous: Yes
Permitted: Yes
Wet space: No
Addition: No
Conversion: No

22 Floor 2 - Dining Area



Max Dimensions: 11'3" x 12'1"
Calculated Area: 134 sq. ft
Included: Yes

Heated: Yes
Finished: Yes
Enclosed: Yes
Contiguous: Yes
Permitted: Yes
Wet space: No
Addition: No
Conversion: No

23 Floor 2 - Garage

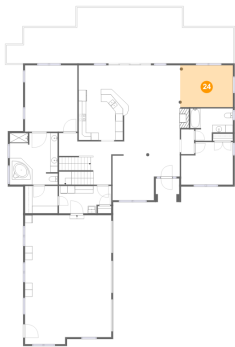


Max Dimensions: 23'1" x 34'6"
Calculated Area: 775 sq. ft
Included: No

Heated: No
Finished: No
Enclosed: Yes
Contiguous: Yes
Permitted: Yes
Wet space: No
Addition: No
Conversion: No

325 Bull Run Trail, Penhook, Franklin County, Virginia, United States, 24137

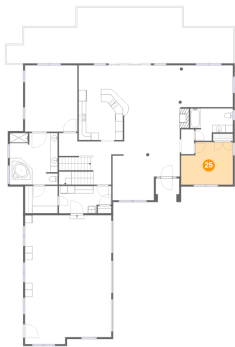
24 Floor 2 - Family Room



Max Dimensions: 14'1" x 11'3"
Calculated Area: 158 sq. ft
Included: Yes

Heated: Yes
Finished: Yes
Enclosed: Yes
Contiguous: Yes
Permitted: Yes
Wet space: No
Addition: No
Conversion: No

25 Floor 2 - Bedroom



Max Dimensions: 13'11" x 11'5"
Calculated Area: 145 sq. ft
Included: Yes

Heated: Yes
Finished: Yes
Enclosed: Yes
Contiguous: Yes
Permitted: Yes
Wet space: No
Addition: No
Conversion: No

26 Floor 2 - W.I.C.



Max Dimensions: 8'9" x 7'4"
Calculated Area: 64 sq. ft
Included: Yes

Heated: Yes
Finished: Yes
Enclosed: Yes
Contiguous: Yes
Permitted: Yes
Wet space: No
Addition: No
Conversion: No

325 Bull Run Trail, Penhook, Franklin County, Virginia, United States, 24137

27 Floor 2 - Laundry



Max Dimensions: 14'0" x 7'4"
Calculated Area: 94 sq. ft
Included: Yes

Heated: Yes
Finished: Yes
Enclosed: Yes
Contiguous: Yes
Permitted: Yes
Wet space: No
Addition: No
Conversion: No

28 Floor 2 - Kitchen



Max Dimensions: 12'1" x 13'5"
Calculated Area: 161 sq. ft
Included: Yes

Heated: Yes
Finished: Yes
Enclosed: Yes
Contiguous: Yes
Permitted: Yes
Wet space: No
Addition: No
Conversion: No

29 Floor 2 - Bath



Max Dimensions: 11'5" x 8'8"
Calculated Area: 81 sq. ft
Included: Yes

Heated: Yes
Finished: Yes
Enclosed: Yes
Contiguous: Yes
Permitted: Yes
Wet space: Yes
Addition: No
Conversion: No

325 Bull Run Trail, Penhook, Franklin County, Virginia, United States, 24137

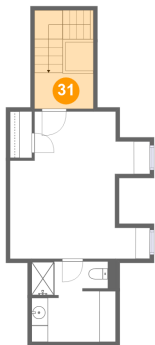
30 Floor 2 - Hall



Max Dimensions: 14'1" x 11'7"
Calculated Area: 169 sq. ft
Included: Yes

Heated: Yes
Finished: Yes
Enclosed: Yes
Contiguous: Yes
Permitted: Yes
Wet space: No
Addition: No
Conversion: No

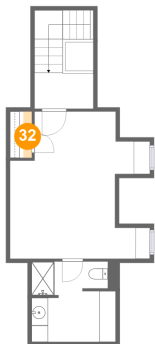
31 Floor 3 - Hall



Max Dimensions: 7'2" x 4'5"
Calculated Area: 86 sq. ft
Included: Yes

Heated: Yes
Finished: Yes
Enclosed: Yes
Contiguous: Yes
Permitted: Yes
Wet space: No
Addition: No
Conversion: No

32 Floor 3 - Cl

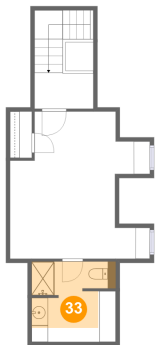


Max Dimensions: 1'0" x 5'8"
Calculated Area: 6 sq. ft
Included: Yes

Heated: Yes
Finished: Yes
Enclosed: Yes
Contiguous: Yes
Permitted: Yes
Wet space: No
Addition: No
Conversion: No

325 Bull Run Trail, Penhook, Franklin County, Virginia, United States, 24137

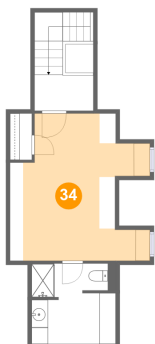
33 Floor 3 - Bath



Max Dimensions: 10'3" x 9'9"
Calculated Area: 71 sq. ft
Included: Yes

Heated: Yes
Finished: Yes
Enclosed: Yes
Contiguous: Yes
Permitted: Yes
Wet space: Yes
Addition: No
Conversion: No

34 Floor 3 - Bedroom



Max Dimensions: 15'4" x 17'11"
Calculated Area: 206 sq. ft
Included: Yes

Heated: Yes
Finished: Yes
Enclosed: Yes
Contiguous: Yes
Permitted: Yes
Wet space: No
Addition: No
Conversion: No