

## Home data report

**2410 Cornwallis Avenue Southeast, Roanoke, Virginia 24014, United States**



**Total Area: 3061 sq. ft**

Basement: 0 sq. ft, 1st Floor: 1547 sq. ft, 2nd Floor: 1396 sq. ft, 3rd Floor: 118 sq. ft

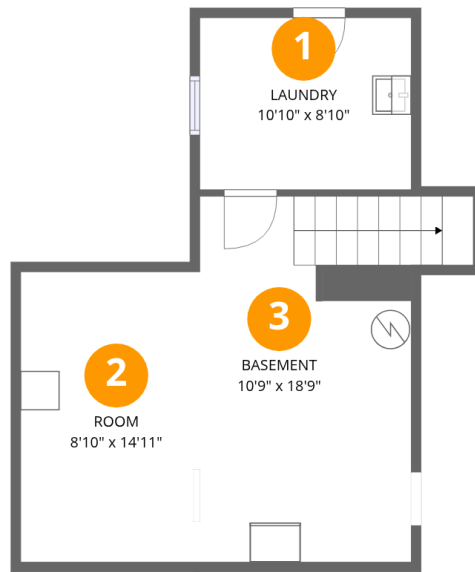
Excluded: Room 132 sq. ft, Laundry 99 sq. ft, Basement 215 sq. ft, Sunroom 107 sq. ft, Patio 520 sq. ft, Fireplace 10 sq. ft, Low ceiling 433 sq. ft, Walls: 275 sq. ft

## Property summary



Home data report

2410 Cornwallis Avenue Southeast, Roanoke, Virginia 24014,  
United States



## Room dimensions

Floor 1 Below grade

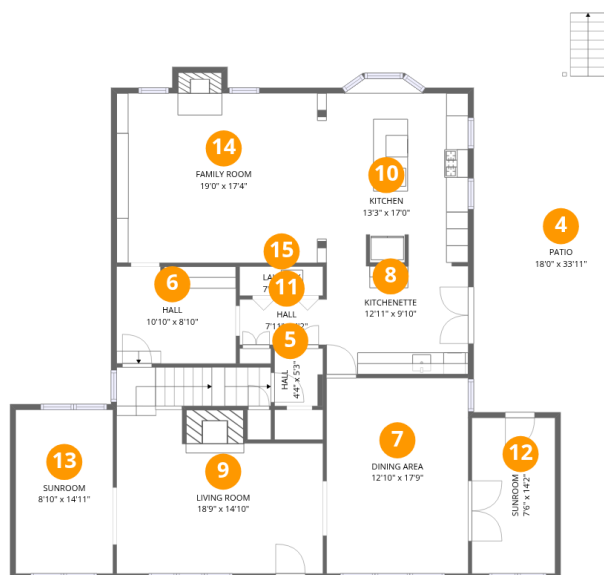
Total:0sqft

Excluded: 446sqft

#		Dimensions	sqft	Counted as living area
1	Laundry	10'10" x 8'10"	96 sq. ft	No
2	Room	8'10" x 14'11"	132 sq. ft	No
3	Basement	10'9" x 18'9"	213 sq. ft	No

Home data report

2410 Cornwallis Avenue Southeast, Roanoke, Virginia 24014, United States



Room dimensions

Floor 2

Total:1547sqft

Excluded: 637sqft

#		Dimensions	sqft	Counted as living area
4	Patio	18'0" x 33'11"	520 sq. ft	No
5	Hall	4'4" x 5'3"	23 sq. ft	Yes
6	Hall	10'10" x 8'10"	95 sq. ft	Yes
7	Dining Area	12'10" x 17'9"	229 sq. ft	Yes
8	Kitchenette	12'11" x 9'10"	127 sq. ft	Yes
9	Living Room	18'9" x 14'10"	289 sq. ft	Yes
10	Kitchen	13'3" x 17'0"	212 sq. ft	Yes
11	Hall	7'11" x 4'2"	33 sq. ft	Yes
12	Sunroom	7'6" x 14'2"	107 sq. ft	No
13	Sunroom	8'10" x 14'11"	132 sq. ft	Yes
14	Family Room	19'0" x 17'4"	296 sq. ft	Yes

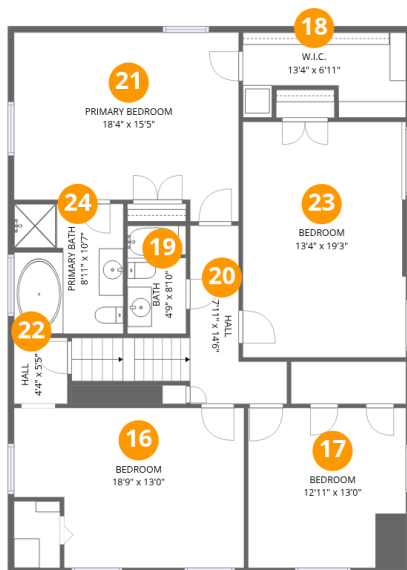
Home data report

**2410 Cornwallis Avenue Southeast, Roanoke, Virginia 24014,  
United States**

#		Dimensions	sqft	Counted as living area
15	Laundry	7'7" x 2'8"	20 sq. ft	Yes

## Home data report

2410 Cornwallis Avenue Southeast, Roanoke, Virginia 24014, United States



## Room dimensions

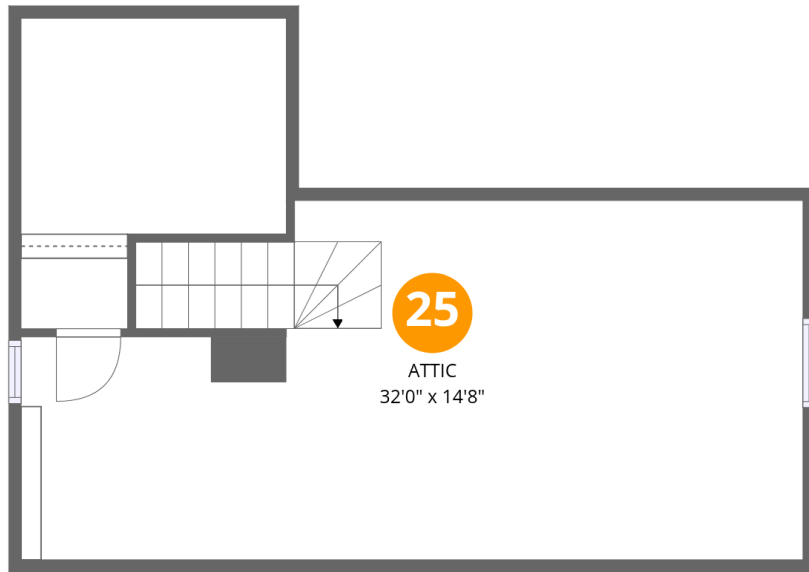
Floor 3

Total:1396sqft Excluded: 0sqft

#		Dimensions	sqft	Counted as living area
16	Bedroom	18'9" x 13'0"	221 sq. ft	Yes
17	Bedroom	12'11" x 13'0"	168 sq. ft	Yes
18	W.I.C.	13'4" x 6'11"	78 sq. ft	Yes
19	Bath	4'9" x 8'10"	42 sq. ft	Yes
20	Hall	7'11" x 14'6"	105 sq. ft	Yes
21	Primary Bedroom	18'4" x 15'5"	257 sq. ft	Yes
22	Hall	4'4" x 5'5"	23 sq. ft	Yes
23	Bedroom	13'4" x 19'3"	256 sq. ft	Yes
24	Primary Bath	8'11" x 10'7"	93 sq. ft	Yes

Home data report

**2410 Cornwallis Avenue Southeast, Roanoke, Virginia 24014,  
United States**



## Room dimensions

Floor 4

Total:118sqft

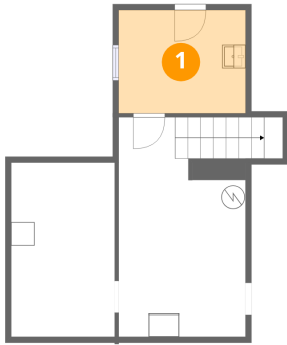
Excluded: 433sqft

#		Dimensions	sqft	Counted as living area
25	Attic	32'0" x 14'8"	239 sq. ft	No

2410 Cornwallis Avenue Southeast, Roanoke, Virginia 24014,  
United States

1 Floor 1 - Laundry

---

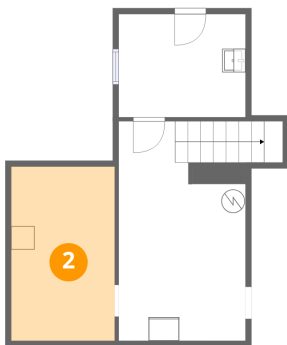


Dimensions: 10'10" x 8'10"  
Area: 96 sq. ft  
Counted as living area: No

Heated: Yes  
Finished: No  
Enclosed: Yes  
Contiguous: Yes  
Permitted: Yes  
Wet space: No  
Addition: No  
Conversion: No

2 Floor 1 - Room

---

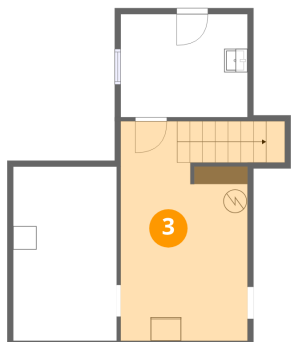


Dimensions: 8'10" x 14'11"  
Area: 132 sq. ft  
Counted as living area: No

Heated: Yes  
Finished: No  
Enclosed: Yes  
Contiguous: Yes  
Permitted: Yes  
Wet space: No  
Addition: No  
Conversion: No

# 2410 Cornwallis Avenue Southeast, Roanoke, Virginia 24014, United States

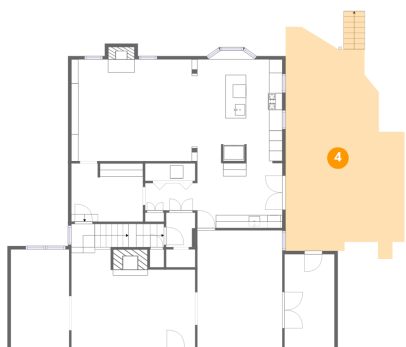
## 3 Floor 1 - Basement



Dimensions: 10'9" x 18'9"  
Area: 213 sq. ft  
Counted as living area: No

Heated: Yes  
Finished: No  
Enclosed: Yes  
Contiguous: Yes  
Permitted: Yes  
Wet space: No  
Addition: No  
Conversion: No

## 4 Floor 2 - Patio



Dimensions: 18'0" x 33'11"  
Area: 520 sq. ft  
Counted as living area: No

Heated: No  
Finished: No  
Enclosed: No  
Contiguous: Yes  
Permitted: Yes  
Wet space: No  
Addition: No  
Conversion: No

## 5 Floor 2 - Hall



Dimensions: 4'4" x 5'3"  
Area: 23 sq. ft  
Counted as living area: Yes

Heated: Yes  
Finished: Yes  
Enclosed: Yes  
Contiguous: Yes  
Permitted: Yes  
Wet space: No  
Addition: No  
Conversion: No

# 2410 Cornwallis Avenue Southeast, Roanoke, Virginia 24014, United States

## 6 Floor 2 - Hall



Dimensions: 10'10" x 8'10"  
Area: 95 sq. ft  
Counted as living area: Yes

Heated: Yes  
Finished: Yes  
Enclosed: Yes  
Contiguous: Yes  
Permitted: Yes  
Wet space: No  
Addition: No  
Conversion: No

## 7 Floor 2 - Dining Area



Dimensions: 12'10" x 17'9"  
Area: 229 sq. ft  
Counted as living area: Yes

Heated: Yes  
Finished: Yes  
Enclosed: Yes  
Contiguous: Yes  
Permitted: Yes  
Wet space: No  
Addition: No  
Conversion: No

## 8 Floor 2 - Kitchenette



Dimensions: 12'11" x 9'10"  
Area: 127 sq. ft  
Counted as living area: Yes

Heated: Yes  
Finished: Yes  
Enclosed: Yes  
Contiguous: Yes  
Permitted: Yes  
Wet space: No  
Addition: No  
Conversion: No

# 2410 Cornwallis Avenue Southeast, Roanoke, Virginia 24014, United States

## 9 Floor 2 - Living Room



Dimensions: 18'9" x 14'10"  
Area: 289 sq. ft  
Counted as living area: Yes

Heated: Yes  
Finished: Yes  
Enclosed: Yes  
Contiguous: Yes  
Permitted: Yes  
Wet space: No  
Addition: No  
Conversion: No

## 10 Floor 2 - Kitchen



Dimensions: 13'3" x 17'0"  
Area: 212 sq. ft  
Counted as living area: Yes

Heated: Yes  
Finished: Yes  
Enclosed: Yes  
Contiguous: Yes  
Permitted: Yes  
Wet space: No  
Addition: No  
Conversion: No

## 11 Floor 2 - Hall



Dimensions: 7'11" x 4'2"  
Area: 33 sq. ft  
Counted as living area: Yes

Heated: Yes  
Finished: Yes  
Enclosed: Yes  
Contiguous: Yes  
Permitted: Yes  
Wet space: No  
Addition: No  
Conversion: No

2410 Cornwallis Avenue Southeast, Roanoke, Virginia 24014,  
United States

**12** Floor 2 - Sunroom



Dimensions: 7'6" x 14'2"  
Area: 107 sq. ft  
Counted as living area: No

Heated: No  
Finished: No  
Enclosed: No  
Contiguous: Yes  
Permitted: Yes  
Wet space: No  
Addition: No  
Conversion: No

**13** Floor 2 - Sunroom



Dimensions: 8'10" x 14'11"  
Area: 132 sq. ft  
Counted as living area: No

Heated: Yes  
Finished: Yes  
Enclosed: Yes  
Contiguous: No  
Permitted: Yes  
Wet space: No  
Addition: No  
Conversion: No

**14** Floor 2 - Family Room



Dimensions: 19'0" x 17'4"  
Area: 296 sq. ft  
Counted as living area: Yes

Heated: Yes  
Finished: Yes  
Enclosed: Yes  
Contiguous: Yes  
Permitted: Yes  
Wet space: No  
Addition: No  
Conversion: No

2410 Cornwallis Avenue Southeast, Roanoke, Virginia 24014, United States

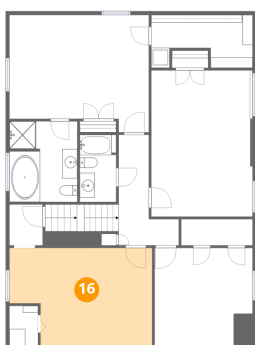
15 Floor 2 - Laundry



Dimensions: 7'7" x 2'8"  
Area: 20 sq. ft  
Counted as living area: Yes

Heated: Yes  
Finished: Yes  
Enclosed: Yes  
Contiguous: Yes  
Permitted: Yes  
Wet space: No  
Addition: No  
Conversion: No

16 Floor 3 - Bedroom



Dimensions: 18'9" x 13'0"  
Area: 221 sq. ft  
Counted as living area: Yes

Heated: Yes  
Finished: Yes  
Enclosed: Yes  
Contiguous: Yes  
Permitted: Yes  
Wet space: No  
Addition: No  
Conversion: No

17 Floor 3 - Bedroom

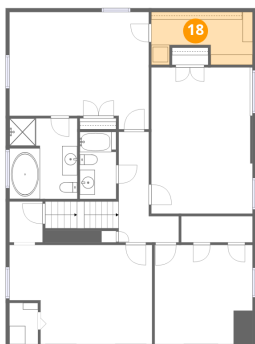


Dimensions: 12'11" x 13'0"  
Area: 168 sq. ft  
Counted as living area: Yes

Heated: Yes  
Finished: Yes  
Enclosed: Yes  
Contiguous: Yes  
Permitted: Yes  
Wet space: No  
Addition: No  
Conversion: No

2410 Cornwallis Avenue Southeast, Roanoke, Virginia 24014, United States

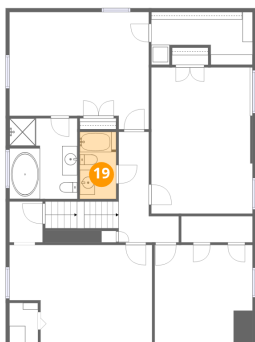
**18** Floor 3 - W.I.C.



Dimensions: 13'4" x 6'11"  
Area: 78 sq. ft  
Counted as living area: Yes

Heated: Yes  
Finished: Yes  
Enclosed: Yes  
Contiguous: Yes  
Permitted: Yes  
Wet space: No  
Addition: No  
Conversion: No

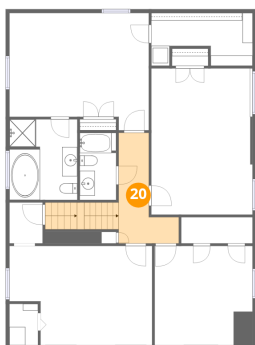
**19** Floor 3 - Bath



Dimensions: 4'9" x 8'10"  
Area: 42 sq. ft  
Counted as living area: Yes

Heated: Yes  
Finished: Yes  
Enclosed: Yes  
Contiguous: Yes  
Permitted: Yes  
Wet space: Yes  
Addition: No  
Conversion: No

**20** Floor 3 - Hall



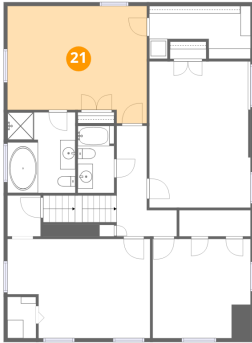
Dimensions: 7'11" x 14'6"  
Area: 105 sq. ft  
Counted as living area: Yes

Heated: Yes  
Finished: Yes  
Enclosed: Yes  
Contiguous: Yes  
Permitted: Yes  
Wet space: No  
Addition: No  
Conversion: No

2410 Cornwallis Avenue Southeast, Roanoke, Virginia 24014,  
United States

**21** Floor 3 - Primary Bedroom

---

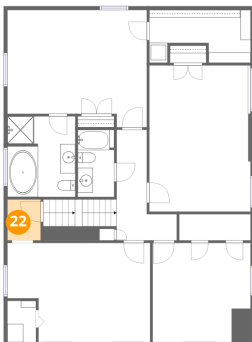


Dimensions: 18'4" x 15'5"  
Area: 257 sq. ft  
Counted as living area: Yes

Heated: Yes  
Finished: Yes  
Enclosed: Yes  
Contiguous: Yes  
Permitted: Yes  
Wet space: No  
Addition: No  
Conversion: No

**22** Floor 3 - Hall

---



Dimensions: 4'4" x 5'5"  
Area: 23 sq. ft  
Counted as living area: Yes

Heated: Yes  
Finished: Yes  
Enclosed: Yes  
Contiguous: Yes  
Permitted: Yes  
Wet space: No  
Addition: No  
Conversion: No

**23** Floor 3 - Bedroom

---

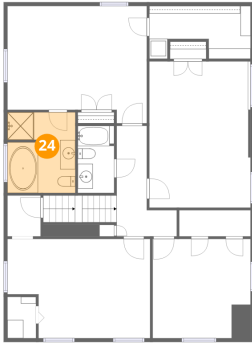


Dimensions: 13'4" x 19'3"  
Area: 256 sq. ft  
Counted as living area: Yes

Heated: Yes  
Finished: Yes  
Enclosed: Yes  
Contiguous: Yes  
Permitted: Yes  
Wet space: No  
Addition: No  
Conversion: No

2410 Cornwallis Avenue Southeast, Roanoke, Virginia 24014,  
United States

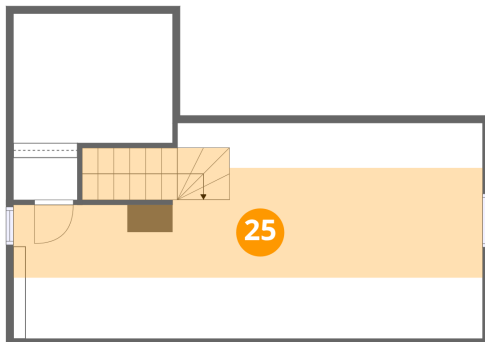
**24** Floor 3 - Primary Bath



Dimensions: 8'11" x 10'7"  
Area: 93 sq. ft  
Counted as living area: Yes

Heated: Yes  
Finished: Yes  
Enclosed: Yes  
Contiguous: Yes  
Permitted: Yes  
Wet space: Yes  
Addition: No  
Conversion: No

**25** Floor 4 - Attic



Dimensions: 32'0" x 14'8"  
Area: 239 sq. ft  
Counted as living area: No

Heated: No  
Finished: No  
Enclosed: Yes  
Contiguous: Yes  
Permitted: Yes  
Wet space: No  
Addition: No  
Conversion: No