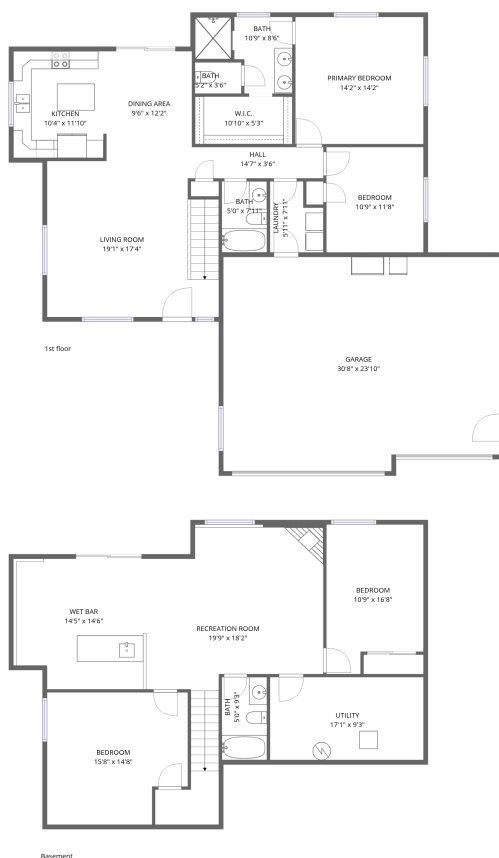


Home data report

13558 Frontier Loop, Piedmont, SD, US



Total Area: 2270 sq. ft

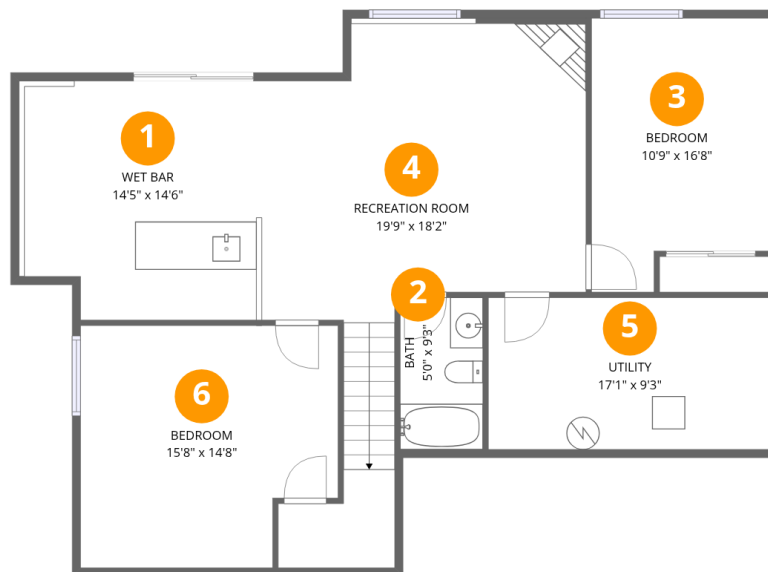
Basement: 1056 sq. ft, 1st Floor: 1214 sq. ft

Excluded: Utility 157 sq. ft, Garage 709 sq. ft, Walls: 200 sq. ft

Property summary



13558 Frontier Loop, Piedmont, SD, US



Room dimensions

Floor 1 Below grade

Total: 1056 sqft

Excluded: 157 sqft

#		Dimensions	sqft	Counted as living area
1	Wet Bar	14'5" x 14'6"	204 sq. ft	Yes
2	Bath	5'0" x 9'3"	46 sq. ft	Yes
3	Bedroom	10'9" x 16'8"	162 sq. ft	Yes
4	Recreation Room	19'9" x 18'2"	383 sq. ft	Yes
5	Utility	17'1" x 9'3"	157 sq. ft	No
6	Bedroom	15'8" x 14'8"	213 sq. ft	Yes

Home data report

13558 Frontier Loop,Piedmont,SD,US



Room dimensions

Floor 2

Total:1214sqft Excluded: 709sqft

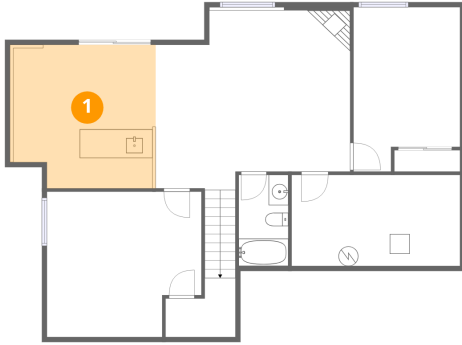
#		Dimensions	sqft	Counted as living area
7	Bath	5'2" x 3'6"	18 sq. ft	Yes
8	W.I.C.	10'10" x 5'3"	57 sq. ft	Yes
9	Dining Area	9'6" x 12'2"	116 sq. ft	Yes
10	Bedroom	10'9" x 11'8"	126 sq. ft	Yes
11	Living Room	19'1" x 17'4"	317 sq. ft	Yes
12	Hall	14'7" x 3'6"	51 sq. ft	Yes
13	Bath	5'0" x 7'11"	40 sq. ft	Yes
14	Bath	10'9" x 8'6"	71 sq. ft	Yes
15	Laundry	5'11" x 7'11"	40 sq. ft	Yes
16	Kitchen	10'4" x 11'10"	122 sq. ft	Yes
17	Garage	30'8" x 23'10"	709 sq. ft	No

Home data report

13558 Frontier Loop,Piedmont,SD,US

#		Dimensions	sqft	Counted as living area
18	Primary Bedroom	14'2" x 14'2"	201 sq. ft	Yes

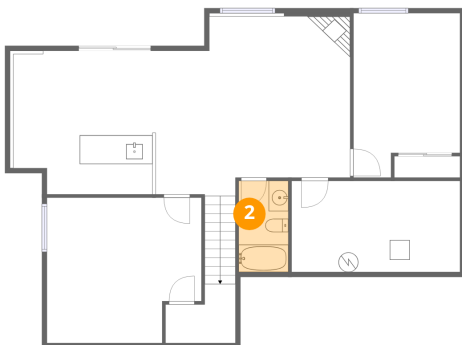
1 Floor 1 - Wet Bar



Dimensions: 14'5" x 14'6"
Area: 204 sq. ft
Counted as living area: Yes

Heated: Yes
Finished: Yes
Enclosed: Yes
Contiguous: Yes
Permitted: Yes
Wet space: No
Addition: No
Conversion: No

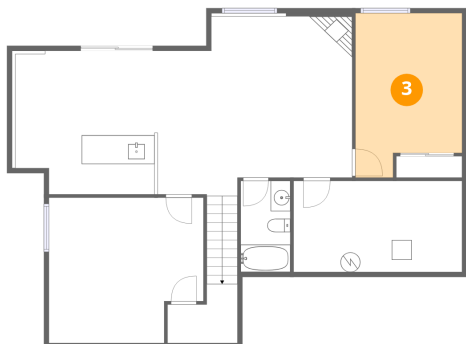
2 Floor 1 - Bath



Dimensions: 5'0" x 9'3"
Area: 46 sq. ft
Counted as living area: Yes

Heated: Yes
Finished: Yes
Enclosed: Yes
Contiguous: Yes
Permitted: Yes
Wet space: Yes
Addition: No
Conversion: No

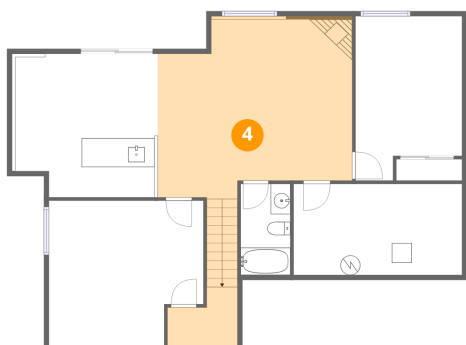
3 Floor 1 - Bedroom



Dimensions: 10'9" x 16'8"
Area: 162 sq. ft
Counted as living area: Yes

Heated: Yes
Finished: Yes
Enclosed: Yes
Contiguous: Yes
Permitted: Yes
Wet space: No
Addition: No
Conversion: No

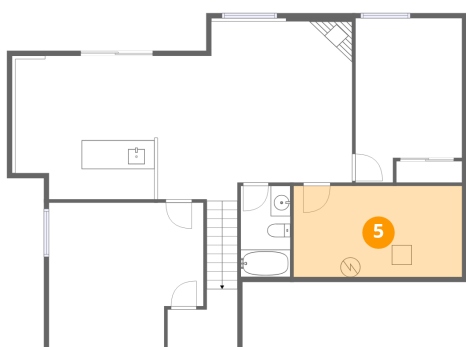
4 Floor 1 - Recreation Room



Dimensions: 19'9" x 18'2"
Area: 383 sq. ft
Counted as living area: Yes

Heated: Yes
Finished: Yes
Enclosed: Yes
Contiguous: Yes
Permitted: Yes
Wet space: No
Addition: No
Conversion: No

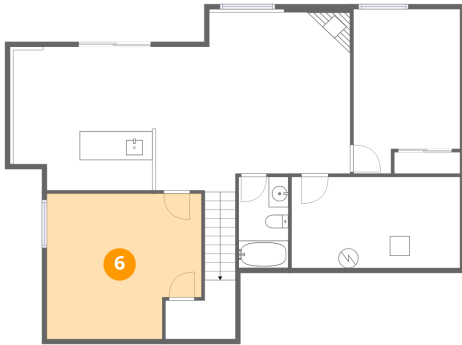
5 Floor 1 - Utility



Dimensions: 17'1" x 9'3"
Area: 157 sq. ft
Counted as living area: No

Heated: Yes
Finished: No
Enclosed: Yes
Contiguous: Yes
Permitted: Yes
Wet space: No
Addition: No
Conversion: No

6 Floor 1 - Bedroom



Dimensions: 15'8" x 14'8"
Area: 213 sq. ft
Counted as living area: Yes

Heated: Yes
Finished: Yes
Enclosed: Yes
Contiguous: Yes
Permitted: Yes
Wet space: No
Addition: No
Conversion: No

7 Floor 2 - Bath



Dimensions: 5'2" x 3'6"
Area: 18 sq. ft
Counted as living area: Yes

Heated: Yes
Finished: Yes
Enclosed: Yes
Contiguous: Yes
Permitted: Yes
Wet space: Yes
Addition: No
Conversion: No

8 Floor 2 - W.I.C.



Dimensions: 10'10" x 5'3"
Area: 57 sq. ft
Counted as living area: Yes

Heated: Yes
Finished: Yes
Enclosed: Yes
Contiguous: Yes
Permitted: Yes
Wet space: No
Addition: No
Conversion: No

9 Floor 2 - Dining Area



Dimensions: 9'6" x 12'2"
Area: 116 sq. ft
Counted as living area: Yes

Heated: Yes
Finished: Yes
Enclosed: Yes
Contiguous: Yes
Permitted: Yes
Wet space: No
Addition: No
Conversion: No

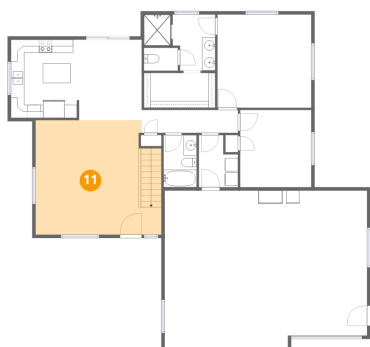
10 Floor 2 - Bedroom



Dimensions: 10'9" x 11'8"
Area: 126 sq. ft
Counted as living area: Yes

Heated: Yes
Finished: Yes
Enclosed: Yes
Contiguous: Yes
Permitted: Yes
Wet space: No
Addition: No
Conversion: No

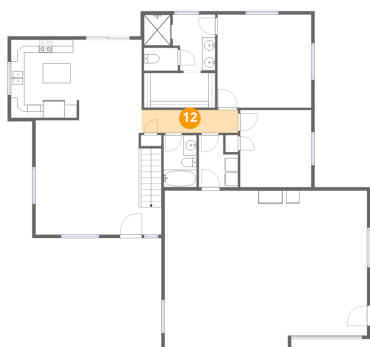
11 Floor 2 - Living Room



Dimensions: 19'1" x 17'4"
Area: 317 sq. ft
Counted as living area: Yes

Heated: Yes
Finished: Yes
Enclosed: Yes
Contiguous: Yes
Permitted: Yes
Wet space: No
Addition: No
Conversion: No

12 Floor 2 - Hall



Dimensions: 14'7" x 3'6"
Area: 51 sq. ft
Counted as living area: Yes

Heated: Yes
Finished: Yes
Enclosed: Yes
Contiguous: Yes
Permitted: Yes
Wet space: No
Addition: No
Conversion: No

13 Floor 2 - Bath



Dimensions: 5'0" x 7'11"
Area: 40 sq. ft
Counted as living area: Yes

Heated: Yes
Finished: Yes
Enclosed: Yes
Contiguous: Yes
Permitted: Yes
Wet space: Yes
Addition: No
Conversion: No

14 Floor 2 - Bath



Dimensions: 10'9" x 8'6"
Area: 71 sq. ft
Counted as living area: Yes

Heated: Yes
Finished: Yes
Enclosed: Yes
Contiguous: Yes
Permitted: Yes
Wet space: Yes
Addition: No
Conversion: No

15 Floor 2 - Laundry



Dimensions: 5'11" x 7'11"
Area: 40 sq. ft
Counted as living area: Yes

Heated: Yes
Finished: Yes
Enclosed: Yes
Contiguous: Yes
Permitted: Yes
Wet space: No
Addition: No
Conversion: No

16 Floor 2 - Kitchen



Dimensions: 10'4" x 11'10"
Area: 122 sq. ft
Counted as living area: Yes

Heated: Yes
Finished: Yes
Enclosed: Yes
Contiguous: Yes
Permitted: Yes
Wet space: No
Addition: No
Conversion: No

17 Floor 2 - Garage



Dimensions: 30'8" x 23'10"
Area: 709 sq. ft
Counted as living area: No

Heated: No
Finished: No
Enclosed: Yes
Contiguous: Yes
Permitted: Yes
Wet space: No
Addition: No
Conversion: No

18 Floor 2 - Primary Bedroom



Dimensions: 14'2" x 14'2"
Area: 201 sq. ft
Counted as living area: Yes

Heated: Yes
Finished: Yes
Enclosed: Yes
Contiguous: Yes
Permitted: Yes
Wet space: No
Addition: No
Conversion: No