

Home data report

3652 Locust St, Denver, CO, US



Total Area: 1586 sq. ft

Basement: 783 sq. ft, 1st Floor: 803 sq. ft

Excluded: Utility 20 sq. ft, Garage 550 sq. ft, Patio 902 sq. ft, Walls: 171 sq. ft

Property summary

 **2** Floors

 **5** Bedrooms

 **2** Bathrooms

 **1** Garages



Room dimensions

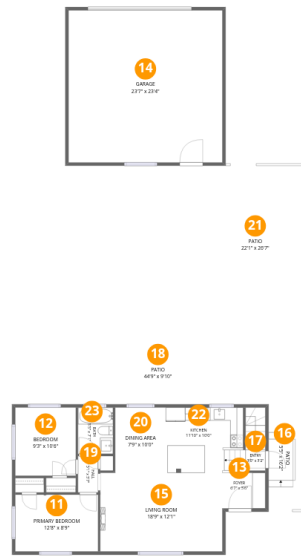
Floor 1 Below grade

Total: 783sqft Excluded: 20sqft

#		Dimensions	sqft	Counted as living area
1	Hall	6'5" x 3'9"	23 sq. ft	Yes
2	Bedroom	11'7" x 11'3"	131 sq. ft	Yes
3	W.I.C.	4'5" x 5'6"	24 sq. ft	Yes
4	Utility	4'7" x 4'4"	20 sq. ft	No
5	Recreation Room	21'8" x 11'3"	216 sq. ft	Yes
6	Bedroom	9'10" x 10'6"	103 sq. ft	Yes
7	Hall	4'11" x 10'10"	61 sq. ft	Yes
8	Bath	4'9" x 6'8"	32 sq. ft	Yes
9	Bedroom	9'11" x 10'6"	83 sq. ft	Yes
10	Laundry	4'7" x 5'10"	27 sq. ft	Yes

Home data report

3652 Locust St, Denver, CO, US



Room dimensions

Floor 2

Total: 803sqft

Excluded: 1452sqft

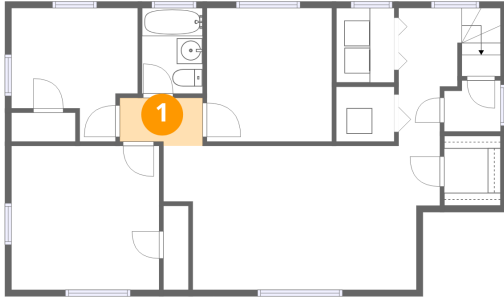
#		Dimensions	sqft	Counted as living area
11	Primary Bedroom	12'8" x 8'9"	111 sq. ft	Yes
12	Bedroom	9'3" x 10'6"	97 sq. ft	Yes
13	Foyer	6'7" x 5'6"	36 sq. ft	Yes
14	Garage	23'7" x 23'4"	550 sq. ft	No
15	Living Room	18'9" x 12'1"	226 sq. ft	Yes
16	Patio	5'5" x 16'2"	87 sq. ft	No
17	Entry	3'0" x 3'2"	31 sq. ft	Yes
18	Patio	44'9" x 9'10"	443 sq. ft	No
19	Hall	3'1" x 5'7"	17 sq. ft	Yes
20	Dining Area	7'9" x 10'0"	78 sq. ft	Yes
21	Patio	22'1" x 26'7"	372 sq. ft	No

Home data report

3652 Locust St,Denver,CO,US

#		Dimensions	sqft	Counted as living area
22	Kitchen	11'10" x 10'0"	119 sq. ft	Yes
23	Bath	5'5" x 7'1"	38 sq. ft	Yes

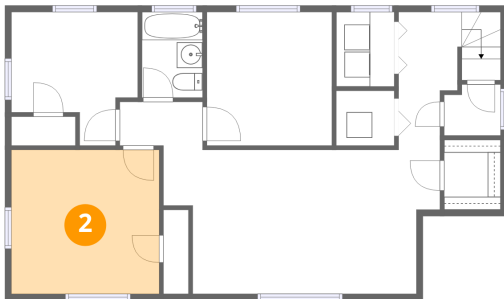
1 Floor 1 - Hall



Dimensions: 6'5" x 3'9"
Area: 23 sq. ft
Counted as living area: Yes

Heated: Yes
Finished: Yes
Enclosed: Yes
Contiguous: Yes
Permitted: Yes
Wet space: No
Addition: No
Conversion: No

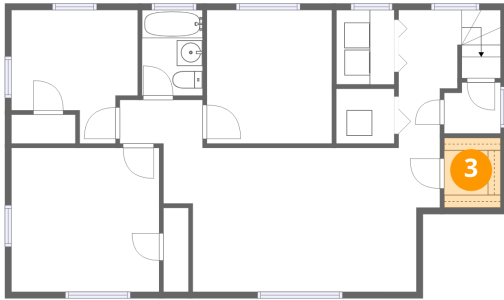
2 Floor 1 - Bedroom



Dimensions: 11'7" x 11'3"
Area: 131 sq. ft
Counted as living area: Yes

Heated: Yes
Finished: Yes
Enclosed: Yes
Contiguous: Yes
Permitted: Yes
Wet space: No
Addition: No
Conversion: No

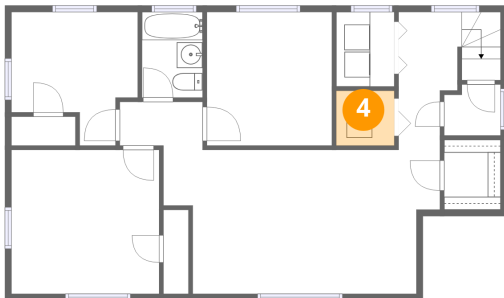
3 Floor 1 - W.I.C.



Dimensions: 4'5" x 5'6"
Area: 24 sq. ft
Counted as living area: Yes

Heated: Yes
Finished: Yes
Enclosed: Yes
Contiguous: Yes
Permitted: Yes
Wet space: No
Addition: No
Conversion: No

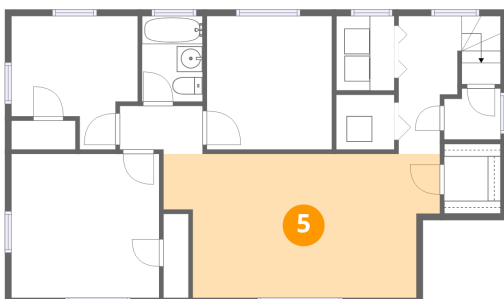
4 Floor 1 - Utility



Dimensions: 4'7" x 4'4"
Area: 20 sq. ft
Counted as living area: No

Heated: Yes
Finished: No
Enclosed: Yes
Contiguous: Yes
Permitted: Yes
Wet space: No
Addition: No
Conversion: No

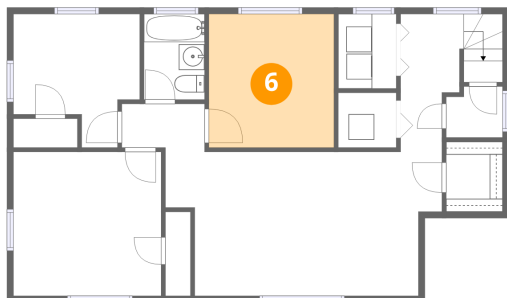
5 Floor 1 - Recreation Room



Dimensions: 21'8" x 11'3"
Area: 216 sq. ft
Counted as living area: Yes

Heated: Yes
Finished: Yes
Enclosed: Yes
Contiguous: Yes
Permitted: Yes
Wet space: No
Addition: No
Conversion: No

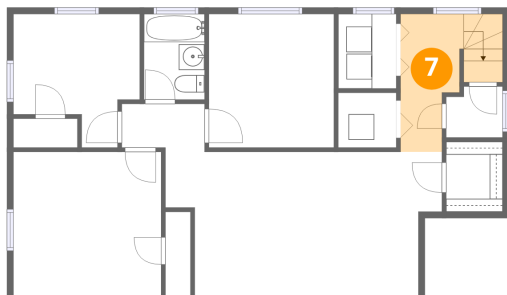
6 Floor 1 - Bedroom



Dimensions: 9'10" x 10'6"
Area: 103 sq. ft
Counted as living area: Yes

Heated: Yes
Finished: Yes
Enclosed: Yes
Contiguous: Yes
Permitted: Yes
Wet space: No
Addition: No
Conversion: No

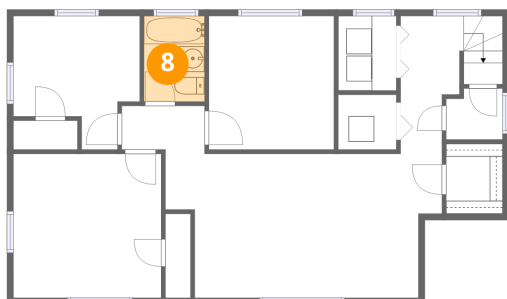
7 Floor 1 - Hall



Dimensions: 4'11" x 10'10"
Area: 61 sq. ft
Counted as living area: Yes

Heated: Yes
Finished: Yes
Enclosed: Yes
Contiguous: Yes
Permitted: Yes
Wet space: No
Addition: No
Conversion: No

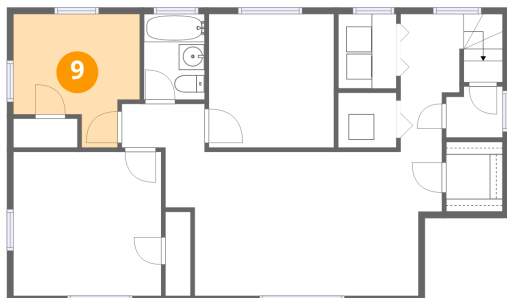
8 Floor 1 - Bath



Dimensions: 4'9" x 6'8"
Area: 32 sq. ft
Counted as living area: Yes

Heated: Yes
Finished: Yes
Enclosed: Yes
Contiguous: Yes
Permitted: Yes
Wet space: Yes
Addition: No
Conversion: No

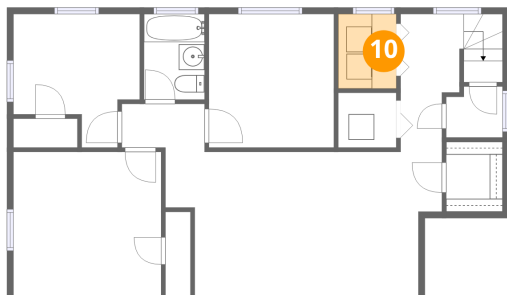
9 Floor 1 - Bedroom



Dimensions: 9'11" x 10'6"
Area: 83 sq. ft
Counted as living area: Yes

Heated: Yes
Finished: Yes
Enclosed: Yes
Contiguous: Yes
Permitted: Yes
Wet space: No
Addition: No
Conversion: No

10 Floor 1 - Laundry



Dimensions: 4'7" x 5'10"
Area: 27 sq. ft
Counted as living area: Yes

Heated: Yes
Finished: Yes
Enclosed: Yes
Contiguous: Yes
Permitted: Yes
Wet space: No
Addition: No
Conversion: No

11 Floor 2 - Primary Bedroom



Dimensions: 12'8" x 8'9"
Area: 111 sq. ft
Counted as living area: Yes

Heated: Yes
Finished: Yes
Enclosed: Yes
Contiguous: Yes
Permitted: Yes
Wet space: No
Addition: No
Conversion: No

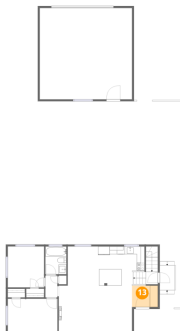
12 Floor 2 - Bedroom



Dimensions: 9'3" x 10'6"
Area: 97 sq. ft
Counted as living area: Yes

Heated: Yes
Finished: Yes
Enclosed: Yes
Contiguous: Yes
Permitted: Yes
Wet space: No
Addition: No
Conversion: No

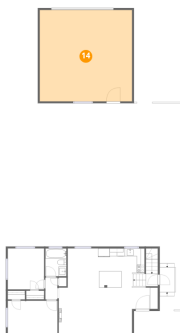
13 Floor 2 - Foyer



Dimensions: 6'7" x 5'6"
Area: 36 sq. ft
Counted as living area: Yes

Heated: Yes
Finished: Yes
Enclosed: Yes
Contiguous: Yes
Permitted: Yes
Wet space: No
Addition: No
Conversion: No

14 Floor 2 - Garage



Dimensions: 23'7" x 23'4"
Area: 550 sq. ft
Counted as living area: No

Heated: No
Finished: No
Enclosed: Yes
Contiguous: Yes
Permitted: Yes
Wet space: No
Addition: No
Conversion: No

15 Floor 2 - Living Room



Dimensions: 18'9" x 12'1"
Area: 226 sq. ft
Counted as living area: Yes

Heated: Yes
Finished: Yes
Enclosed: Yes
Contiguous: Yes
Permitted: Yes
Wet space: No
Addition: No
Conversion: No

16 Floor 2 - Patio



Dimensions: 5'5" x 16'2"
Area: 87 sq. ft
Counted as living area: No

Heated: No
Finished: No
Enclosed: No
Contiguous: Yes
Permitted: Yes
Wet space: No
Addition: No
Conversion: No

17 Floor 2 - Entry



Dimensions: 3'0" x 3'2"
Area: 31 sq. ft
Counted as living area: Yes

Heated: Yes
Finished: Yes
Enclosed: Yes
Contiguous: Yes
Permitted: Yes
Wet space: No
Addition: No
Conversion: No

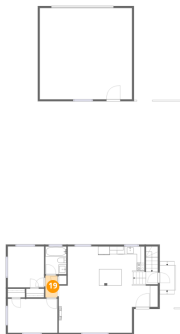
18 Floor 2 - Patio



Dimensions: 44'9" x 9'10"
Area: 443 sq. ft
Counted as living area: No

Heated: No
Finished: No
Enclosed: No
Contiguous: Yes
Permitted: Yes
Wet space: No
Addition: No
Conversion: No

19 Floor 2 - Hall



Dimensions: 3'1" x 5'7"
Area: 17 sq. ft
Counted as living area: Yes

Heated: Yes
Finished: Yes
Enclosed: Yes
Contiguous: Yes
Permitted: Yes
Wet space: No
Addition: No
Conversion: No

20 Floor 2 - Dining Area



Dimensions: 7'9" x 10'0"
Area: 78 sq. ft
Counted as living area: Yes

Heated: Yes
Finished: Yes
Enclosed: Yes
Contiguous: Yes
Permitted: Yes
Wet space: No
Addition: No
Conversion: No

21 Floor 2 - Patio



Dimensions: 22'1" x 26'7"
Area: 372 sq. ft
Counted as living area: No

Heated: No
Finished: No
Enclosed: No
Contiguous: Yes
Permitted: Yes
Wet space: No
Addition: No
Conversion: No

22 Floor 2 - Kitchen



Dimensions: 11'10" x 10'0"
Area: 119 sq. ft
Counted as living area: Yes

Heated: Yes
Finished: Yes
Enclosed: Yes
Contiguous: Yes
Permitted: Yes
Wet space: No
Addition: No
Conversion: No

23 Floor 2 - Bath



Dimensions: 5'5" x 7'1"
Area: 38 sq. ft
Counted as living area: Yes

Heated: Yes
Finished: Yes
Enclosed: Yes
Contiguous: Yes
Permitted: Yes
Wet space: Yes
Addition: No
Conversion: No