

# Home data report

## 2995 Moonfire Way, Castle Rock, CO, US



**Total Area: 2454 sq. ft**

Basement: 0 sq. ft, 1st Floor: 1034 sq. ft, 2nd Floor: 1420 sq. ft

Excluded: Storage 276 sq. ft, Basement 744 sq. ft, Garage 416 sq. ft, Patio 220 sq. ft, Walls: 251 sq. ft

### Property summary

 **3** Floors

 **4** Bedrooms

 **2** Bathrooms

Home data report

## 2995 Moonfire Way, Castle Rock, CO, US

 **1**  
Half baths

 **1**  
Garages



## Room dimensions

Floor 1 Below grade

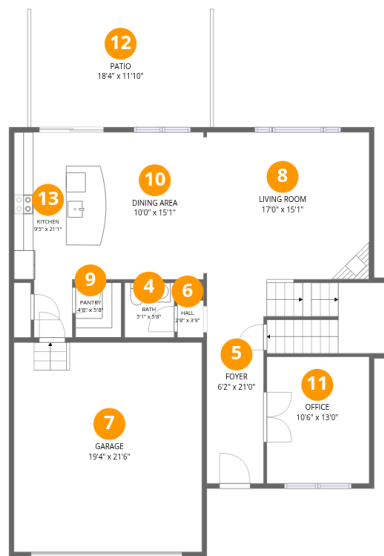
Total: 0sqft

Excluded: 1020sqft

#		Dimensions	sqft	Counted as living area
1	Storage	10'9" x 7'3"	49 sq. ft	No
2	Basement	36'6" x 22'9"	742 sq. ft	No
3	Storage	16'8" x 13'0"	217 sq. ft	No

# Home data report

## 2995 Moonfire Way, Castle Rock, CO, US



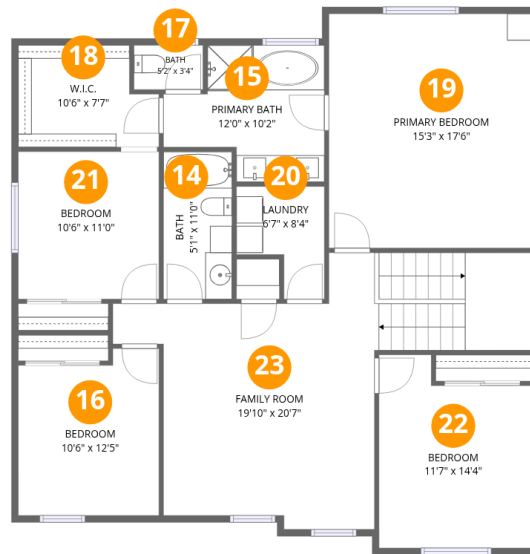
### Room dimensions

Floor 2

Total:1034sqft

Excluded: 636sqft

#		Dimensions	sqft	Counted as living area
4	Bath	5'1" x 5'8"	29 sq. ft	Yes
5	Foyer	6'2" x 21'0"	213 sq. ft	Yes
6	Hall	2'8" x 3'9"	15 sq. ft	Yes
7	Garage	19'4" x 21'6"	416 sq. ft	No
8	Living Room	17'0" x 15'1"	257 sq. ft	Yes
9	Pantry	4'8" x 5'8"	27 sq. ft	Yes
10	Dining Area	10'0" x 15'1"	152 sq. ft	Yes
11	Office	10'6" x 13'0"	137 sq. ft	Yes
12	Patio	18'4" x 11'10"	220 sq. ft	No
13	Kitchen	9'5" x 21'1"	166 sq. ft	Yes



## Room dimensions

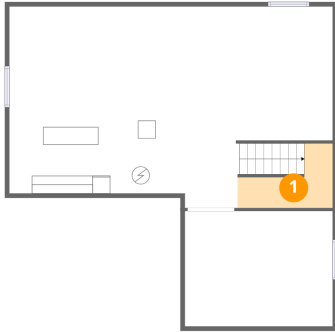
Floor 3

Total: 1420 sqft

Excluded: 0 sqft

#		Dimensions	sqft	Counted as living area
14	Bath	5'1" x 11'0"	56 sq. ft	Yes
15	Primary Bath	12'0" x 10'2"	96 sq. ft	Yes
16	Bedroom	10'6" x 12'5"	122 sq. ft	Yes
17	Bath	5'2" x 3'4"	17 sq. ft	Yes
18	W.I.C.	10'6" x 7'7"	72 sq. ft	Yes
19	Primary Bedroom	15'3" x 17'6"	267 sq. ft	Yes
20	Laundry	6'7" x 8'4"	43 sq. ft	Yes
21	Bedroom	10'6" x 11'0"	115 sq. ft	Yes
22	Bedroom	11'7" x 14'4"	149 sq. ft	Yes
23	Family Room	19'10" x 20'7"	366 sq. ft	Yes

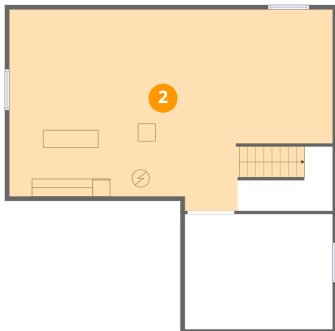
## 1 Floor 1 - Storage



Dimensions: 10'9" x 7'3"  
Area: 49 sq. ft  
Counted as living area: No

Heated: No  
Finished: No  
Enclosed: No  
Contiguous: Yes  
Permitted: Yes  
Wet space: No  
Addition: No  
Conversion: No

## 2 Floor 1 - Basement



Dimensions: 36'6" x 22'9"  
Area: 742 sq. ft  
Counted as living area: No

Heated: Yes  
Finished: No  
Enclosed: Yes  
Contiguous: Yes  
Permitted: Yes  
Wet space: No  
Addition: No  
Conversion: No

### 3 Floor 1 - Storage



Dimensions: 16'8" x 13'0"  
Area: 217 sq. ft  
Counted as living area: No

Heated: No  
Finished: No  
Enclosed: No  
Contiguous: Yes  
Permitted: Yes  
Wet space: No  
Addition: No  
Conversion: No

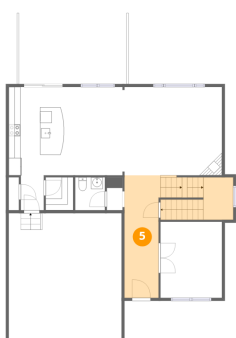
### 4 Floor 2 - Bath



Dimensions: 5'1" x 5'8"  
Area: 29 sq. ft  
Counted as living area: Yes

Heated: Yes  
Finished: Yes  
Enclosed: Yes  
Contiguous: Yes  
Permitted: Yes  
Wet space: Yes  
Addition: No  
Conversion: No

### 5 Floor 2 - Foyer



Dimensions: 6'2" x 21'0"  
Area: 213 sq. ft  
Counted as living area: Yes

Heated: Yes  
Finished: Yes  
Enclosed: Yes  
Contiguous: Yes  
Permitted: Yes  
Wet space: No  
Addition: No  
Conversion: No

## 6 Floor 2 - Hall



Dimensions: 2'8" x 3'9"  
Area: 15 sq. ft  
Counted as living area: Yes

Heated: Yes  
Finished: Yes  
Enclosed: Yes  
Contiguous: Yes  
Permitted: Yes  
Wet space: No  
Addition: No  
Conversion: No

## 7 Floor 2 - Garage



Dimensions: 19'4" x 21'6"  
Area: 416 sq. ft  
Counted as living area: No

Heated: No  
Finished: No  
Enclosed: Yes  
Contiguous: Yes  
Permitted: Yes  
Wet space: No  
Addition: No  
Conversion: No

## 8 Floor 2 - Living Room



Dimensions: 17'0" x 15'1"  
Area: 257 sq. ft  
Counted as living area: Yes

Heated: Yes  
Finished: Yes  
Enclosed: Yes  
Contiguous: Yes  
Permitted: Yes  
Wet space: No  
Addition: No  
Conversion: No

### 9 Floor 2 - Pantry



Dimensions: 4'8" x 5'8"  
Area: 27 sq. ft  
Counted as living area: Yes

Heated: Yes  
Finished: Yes  
Enclosed: Yes  
Contiguous: Yes  
Permitted: Yes  
Wet space: No  
Addition: No  
Conversion: No

### 10 Floor 2 - Dining Area



Dimensions: 10'0" x 15'1"  
Area: 152 sq. ft  
Counted as living area: Yes

Heated: Yes  
Finished: Yes  
Enclosed: Yes  
Contiguous: Yes  
Permitted: Yes  
Wet space: No  
Addition: No  
Conversion: No

### 11 Floor 2 - Office



Dimensions: 10'6" x 13'0"  
Area: 137 sq. ft  
Counted as living area: Yes

Heated: Yes  
Finished: Yes  
Enclosed: Yes  
Contiguous: Yes  
Permitted: Yes  
Wet space: No  
Addition: No  
Conversion: No

## 12 Floor 2 - Patio



Dimensions: 18'4" x 11'10"  
Area: 220 sq. ft  
Counted as living area: No

Heated: No  
Finished: No  
Enclosed: No  
Contiguous: Yes  
Permitted: Yes  
Wet space: No  
Addition: No  
Conversion: No

## 13 Floor 2 - Kitchen



Dimensions: 9'5" x 21'1"  
Area: 166 sq. ft  
Counted as living area: Yes

Heated: Yes  
Finished: Yes  
Enclosed: Yes  
Contiguous: Yes  
Permitted: Yes  
Wet space: No  
Addition: No  
Conversion: No

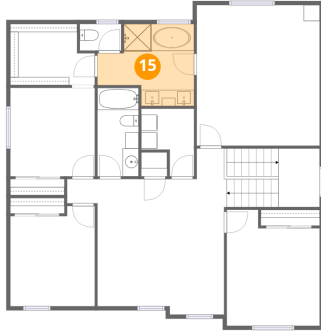
## 14 Floor 3 - Bath



Dimensions: 5'1" x 11'0"  
Area: 56 sq. ft  
Counted as living area: Yes

Heated: Yes  
Finished: Yes  
Enclosed: Yes  
Contiguous: Yes  
Permitted: Yes  
Wet space: Yes  
Addition: No  
Conversion: No

### 15 Floor 3 - Primary Bath



Dimensions: 12'0" x 10'2"  
Area: 96 sq. ft  
Counted as living area: Yes

Heated: Yes  
Finished: Yes  
Enclosed: Yes  
Contiguous: Yes  
Permitted: Yes  
Wet space: Yes  
Addition: No  
Conversion: No

### 16 Floor 3 - Bedroom



Dimensions: 10'6" x 12'5"  
Area: 122 sq. ft  
Counted as living area: Yes

Heated: Yes  
Finished: Yes  
Enclosed: Yes  
Contiguous: Yes  
Permitted: Yes  
Wet space: No  
Addition: No  
Conversion: No

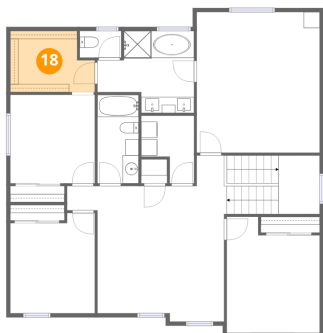
### 17 Floor 3 - Bath



Dimensions: 5'2" x 3'4"  
Area: 17 sq. ft  
Counted as living area: Yes

Heated: Yes  
Finished: Yes  
Enclosed: Yes  
Contiguous: Yes  
Permitted: Yes  
Wet space: Yes  
Addition: No  
Conversion: No

**18** Floor 3 - W.I.C.



Dimensions: 10'6" x 7'7"  
Area: 72 sq. ft  
Counted as living area: Yes

Heated: Yes  
Finished: Yes  
Enclosed: Yes  
Contiguous: Yes  
Permitted: Yes  
Wet space: No  
Addition: No  
Conversion: No

**19** Floor 3 - Primary Bedroom



Dimensions: 15'3" x 17'6"  
Area: 267 sq. ft  
Counted as living area: Yes

Heated: Yes  
Finished: Yes  
Enclosed: Yes  
Contiguous: Yes  
Permitted: Yes  
Wet space: No  
Addition: No  
Conversion: No

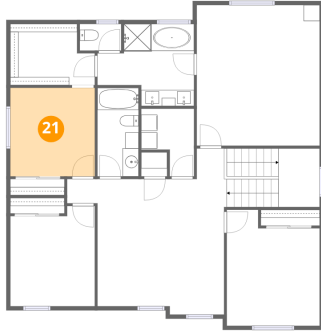
**20** Floor 3 - Laundry



Dimensions: 6'7" x 8'4"  
Area: 43 sq. ft  
Counted as living area: Yes

Heated: Yes  
Finished: Yes  
Enclosed: Yes  
Contiguous: Yes  
Permitted: Yes  
Wet space: No  
Addition: No  
Conversion: No

### 21 Floor 3 - Bedroom



Dimensions: 10'6" x 11'0"  
Area: 115 sq. ft  
Counted as living area: Yes

Heated: Yes  
Finished: Yes  
Enclosed: Yes  
Contiguous: Yes  
Permitted: Yes  
Wet space: No  
Addition: No  
Conversion: No

### 22 Floor 3 - Bedroom



Dimensions: 11'7" x 14'4"  
Area: 149 sq. ft  
Counted as living area: Yes

Heated: Yes  
Finished: Yes  
Enclosed: Yes  
Contiguous: Yes  
Permitted: Yes  
Wet space: No  
Addition: No  
Conversion: No

### 23 Floor 3 - Family Room



Dimensions: 19'10" x 20'7"  
Area: 366 sq. ft  
Counted as living area: Yes

Heated: Yes  
Finished: Yes  
Enclosed: Yes  
Contiguous: Yes  
Permitted: Yes  
Wet space: No  
Addition: No  
Conversion: No