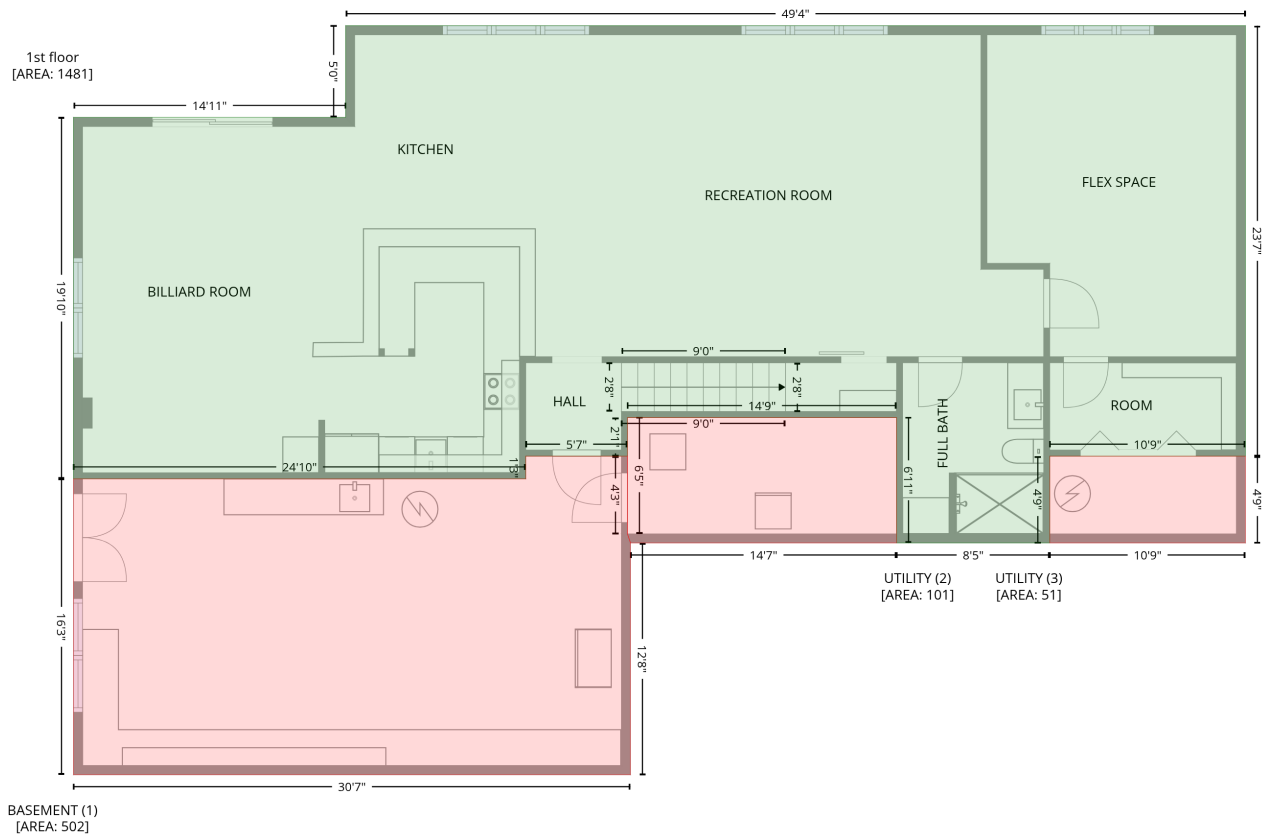


119 Farley Ln, Troutman, NC, US

Gross Living Area: 4800 sq. ft

Level 1

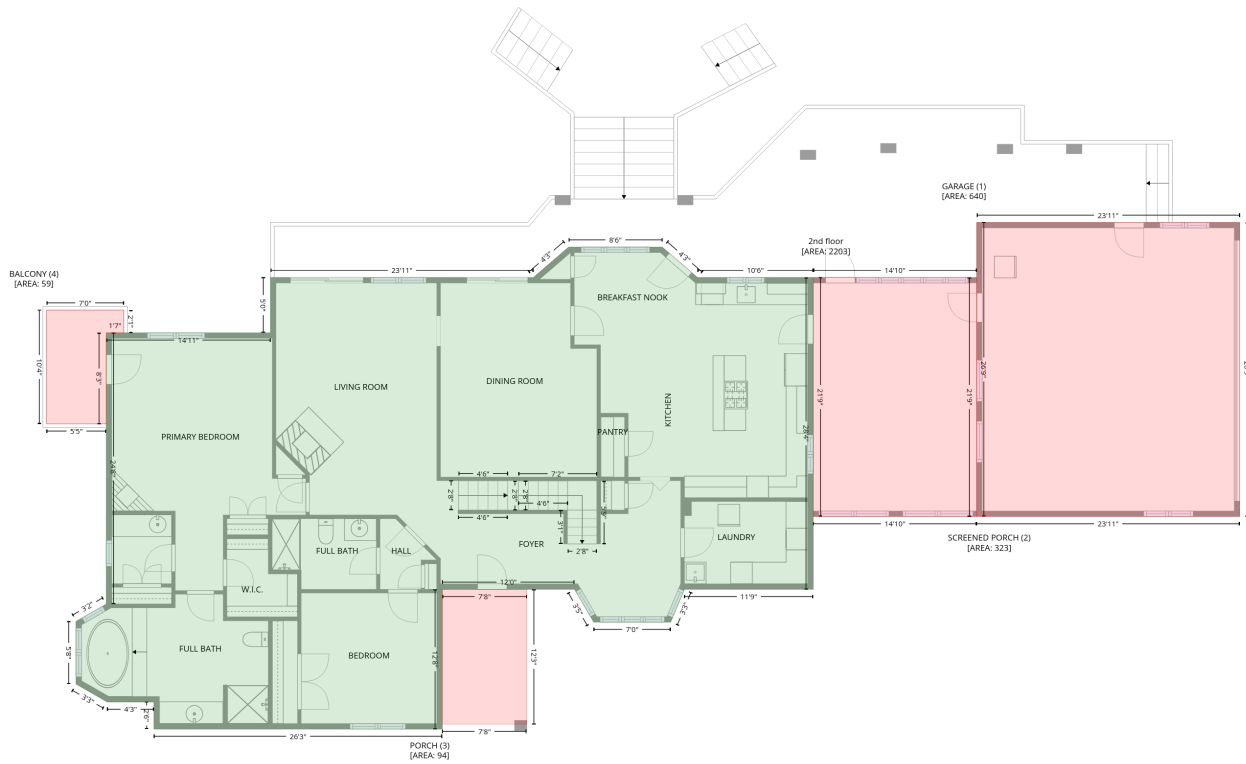


Space	Area (sq. ft)	Calculation
1st floor (Living area)	1481	$-\left((832.1 + 832.1) * (361.4 - 644.5) + (832.1 + 703.3) * (644.5 - 644.5) + (703.3 + 703.3) * (644.5 - 701.7) + (703.3 + 602.4) * (701.7 - 701.7) + (602.4 + 602.4) * (701.7 - 619.2) + (602.4 + 425.3) * (619.2 - 619.2) + (425.3 + 425.3) * (619.2 - 644.5) + (425.3 + 358.4) * (644.5 - 644.5) + (358.4 + 358.4) * (644.5 - 659.5) + (358.4 + 60.7) * (659.5 - 659.5) + (60.7 + 60.7) * (659.5 - 421.7) + (60.7 + 239.8) * (421.7 - 421.7) + (239.8 + 239.8) * (421.7 - 361.4) + (239.8 + 832.1) * (361.4 - 361.4)\right) * 0.5 * 0.00694$
BASEMENT (Non-living area)	502	$-\left((425.3 + 425.3) * (644.5 - 695.7) + (425.3 + 427.3) * (695.7 - 701.7) + (427.3 + 427.3) * (701.7 - 854.1) + (427.3 + 60.7) * (854.1 - 854.1) + (60.7 + 60.7) * (854.1 - 659.5) + (60.7 + 358.4) * (659.5 - 659.5) + (358.4 + 358.4) * (659.5 - 644.5) + (358.4 + 425.3) * (644.5 - 644.5)\right) * 0.5 * 0.00694$
UTILITY (Non-living area)	101	$-\left((602.4 + 602.4) * (619.2 - 701.7) + (602.4 + 427.3) * (701.7 - 701.7) + (427.3 + 425.3) * (701.7 - 695.7) + (425.3 + 425.3) * (695.7 - 619.2) + (425.3 + 602.4) * (619.2 - 619.2)\right) * 0.5 * 0.00694$
UTILITY (Non-living area)	51	$-\left((832.1 + 832.1) * (644.5 - 701.7) + (832.1 + 703.3) * (701.7 - 701.7) + (703.3 + 703.3) * (701.7 - 644.5) + (703.3 + 832.1) * (644.5 - 644.5)\right) * 0.5 * 0.00694$

119 Farley Ln, Troutman, NC, US

Gross Living Area: 4800 sq. ft

Level 2

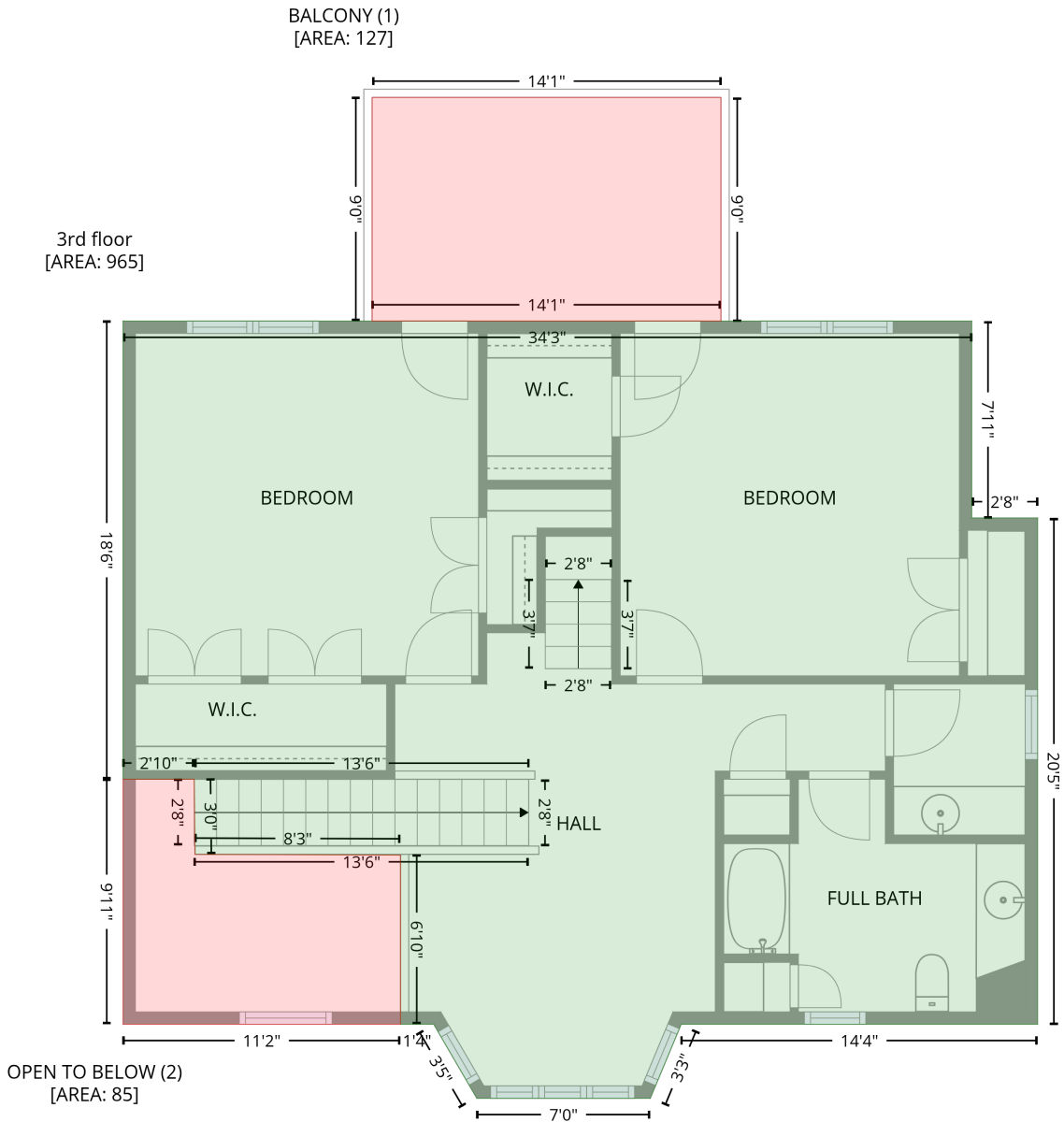


Space	Area (sq. ft)	Calculation
2nd floor (Living area)	2203	Coordinate Polygon Area Algorithm using inches $-((667.4 + 705.8) * (328.2 - 361.4) + (705.8 + 832.2) * (361.4 - 361.4) + (832.2 + 832.2) * (361.4 - 701.6) + (832.2 + 691.5) * (701.6 - 701.6) + (691.5 + 676.6) * (701.6 - 737.5) + (676.6 + 592.6) * (737.5 - 737.5) + (592.6 + 571.7) * (737.5 - 701.6) + (571.7 + 427.4) * (701.6 - 701.6) + (427.4 + 427.4) * (701.6 - 854.1) + (427.4 + 112.8) * (854.1 - 854.1) + (112.8 + 112.8) * (854.1 - 824.6) + (112.8 + 61.8) * (824.6 - 824.6) + (61.8 + 27.7) * (824.6 - 805) + (27.7 + 27.7) * (805 - 736.7) + (27.7 + 60.8) * (736.7 - 717.8) + (60.8 + 60.8) * (717.8 - 421.7) + (60.8 + 239.9) * (421.7 - 421.7) + (239.9 + 239.9) * (421.7 - 361.4) + (239.9 + 526.8) * (361.4 - 361.4) + (526.8 + 565.1) * (361.4 - 328.2) + (565.1 + 667.4) * (328.2 - 328.2)) * 0.5 * 0.00694$
GARAGE (Non-living area)	640	$-((1297.5 + 1297.5) * (301.3 - 622.2) + (1297.5 + 1010.4) * (622.2 - 622.2) + (1010.4 + 1010.4) * (622.2 - 301.3) + (1010.4 + 1297.5) * (301.3 - 301.3)) * 0.5 * 0.00694$
SCREENED PORCH (Non-living area)	323	$-((1010.4 + 1010.4) * (361.4 - 622.2) + (1010.4 + 832.2) * (622.2 - 622.2) + (832.2 + 832.2) * (622.2 - 361.4) + (832.2 + 1010.4) * (361.4 - 361.4)) * 0.5 * 0.00694$
PORCH (Non-living area)	94	$-((519.5 + 519.5) * (701.6 - 848.7) + (519.5 + 427.4) * (848.7 - 848.7) + (427.4 + 427.4) * (848.7 - 701.6) + (427.4 + 519.5) * (701.6 - 701.6)) * 0.5 * 0.00694$
BALCONY (Non-living area)	59	$-((79.9 + 79.9) * (397 - 421.7) + (79.9 + 60.8) * (421.7 - 421.7) + (60.8 + 60.8) * (421.7 - 521.1) + (60.8 + -4.3) * (521.1 - 521.1) + (-4.3 + -4.3) * (521.1 - 397) + (-4.3 + 79.9) * (397 - 397)) * 0.5 * 0.00694$

119 Farley Ln, Troutman, NC, US

Gross Living Area: 4800 sq. ft

Level 3



Space	Area (sq. ft)	Calculation
3rd floor (Living area)	965	Coordinate Polygon Area Algorithm using inches $-((832.1 + 832.1) * (361.4 - 456.7) + (832.1 + 864) * (456.7 - 456.7) + (864 + 864) * (456.7 - 701.6) + (864 + 691.5) * (701.6 - 701.6) + (691.5 + 676.6) * (701.6 - 737.5) + (676.6 + 592.6) * (737.5 - 737.5) + (592.6 + 571.7) * (737.5 - 701.6) + (571.7 + 555.7) * (701.6 - 701.6) + (555.7 + 555.7) * (701.6 - 619.8) + (555.7 + 456.2) * (619.8 - 619.4) + (456.2 + 455.9) * (619.4 - 583.1) + (455.9 + 421.4) * (583.1 - 583.1) + (421.4 + 421.4) * (583.1 - 361.4) + (421.4 + 832.1) * (361.4 - 361.4)) * 0.5 * 0.00694$

119 Farley Ln, Troutman, NC, US

Gross Living Area: 4800 sq. ft

Level 3

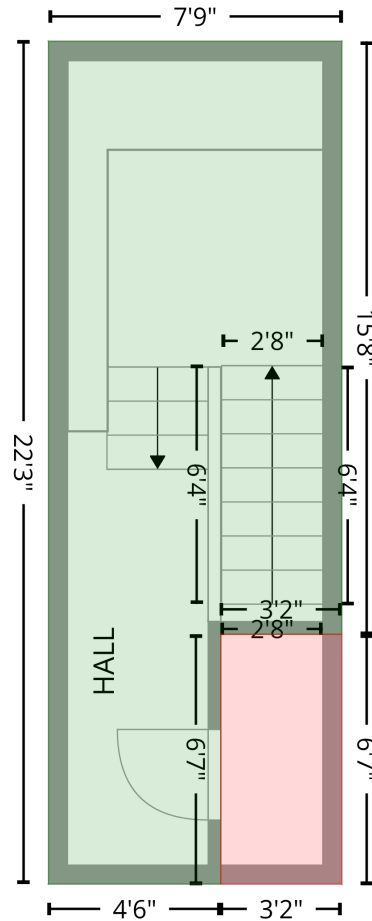
Space	Area (sq. ft)	Calculation <small>Coordinate Polygon Area Algorithm using inches</small>
BALCONY (Non-living area)	127	$-\left((710.8 + 710.8) * (253.2 - 361.4) + (710.8 + 541.9) * (361.4 - 361.4) + (541.9 + 541.9) * (361.4 - 253.2) + (541.9 + 710.8) * (253.2 - 253.2)\right) * 0.5 * 0.00694$
OPEN TO BELOW (Non-living area)	85	$-\left((455.9 + 456.2) * (583.1 - 619.4) + (456.2 + 555.7) * (619.4 - 619.8) + (555.7 + 555.7) * (619.8 - 701.6) + (555.7 + 421.4) * (701.6 - 701.6) + (421.4 + 421.4) * (701.6 - 583.1) + (421.4 + 455.9) * (583.1 - 583.1)\right) * 0.5 * 0.00694$

119 Farley Ln, Troutman, NC, US

Gross Living Area: 4800 sq. ft

Level 4

4th floor
[AREA: 151]



UNDEFINED (1)
[AREA: 21]

Space	Area (sq. ft)	Calculation <small>Coordinate Polygon Area Algorithm using inches</small>
4th floor (Living area)	151	$-((664 + 664) * (361.4 - 549.3) + (664 + 625.8) * (549.3 - 549.3) + (625.8 + 625.8) * (549.3 - 628.4) + (625.8 + 571.3) * (628.4 - 628.4) + (571.3 + 571.3) * (628.4 - 361.4) + (571.3 + 664) * (361.4 - 361.4)) * 0.5 * 0.00694$
UNDEFINED (Non-living area)	21	$-((664 + 664) * (549.3 - 628.4) + (664 + 625.8) * (628.4 - 628.4) + (625.8 + 625.8) * (628.4 - 549.3) + (625.8 + 664) * (549.3 - 549.3)) * 0.5 * 0.00694$