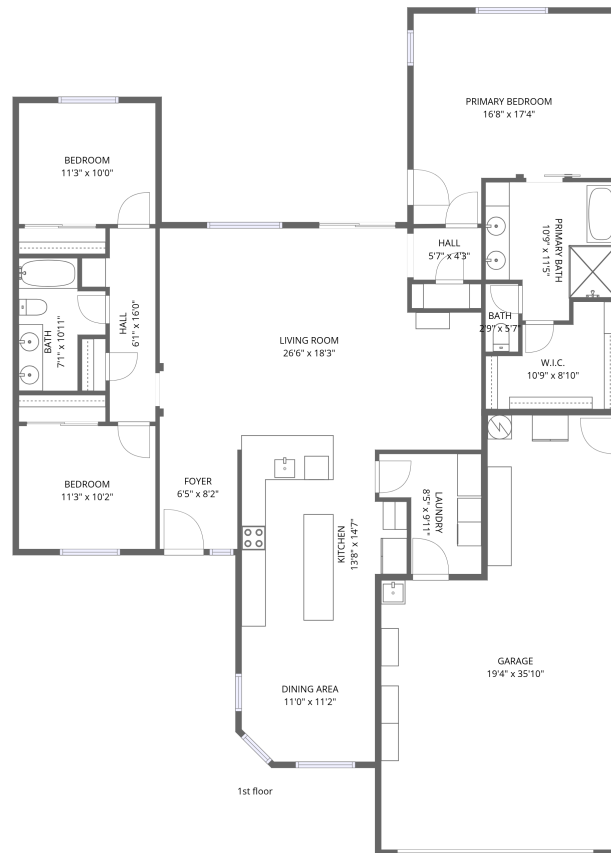


Home data report

1311 S Canyon Oaks Way, Chandler, AZ, US



Total Area: 1796 sq. ft

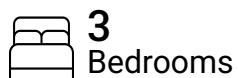
1st Floor: 1796 sq. ft

Excluded: Garage 575 sq. ft, Walls: 153 sq. ft

Property summary



1
Floors



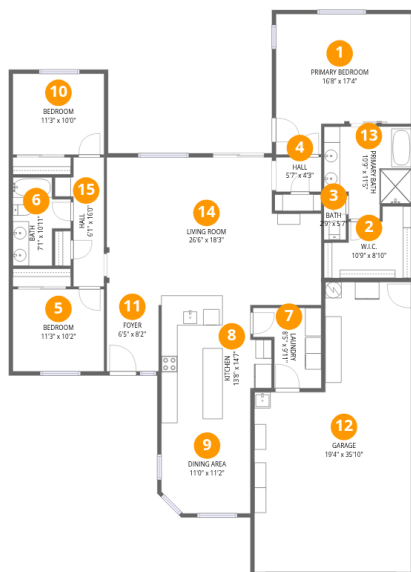
3
Bedrooms



2
Bathrooms



1
Garages



Room dimensions

Floor 1

Total: 1796sqft Excluded: 575sqft

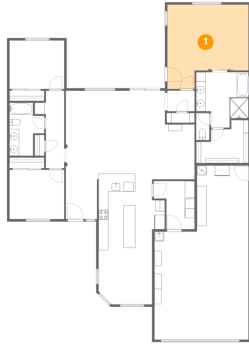
#		Dimensions	sqft	Counted as living area
1	Primary Bedroom	16'8" x 17'4"	289 sq. ft	Yes
2	W.I.C.	10'9" x 8'10"	95 sq. ft	Yes
3	Bath	2'9" x 5'7"	15 sq. ft	Yes
4	Hall	5'7" x 4'3"	24 sq. ft	Yes
5	Bedroom	11'3" x 10'2"	115 sq. ft	Yes
6	Bath	7'1" x 10'11"	78 sq. ft	Yes
7	Laundry	8'5" x 9'11"	84 sq. ft	Yes
8	Kitchen	13'8" x 14'7"	198 sq. ft	Yes
9	Dining Area	11'0" x 11'2"	123 sq. ft	Yes
10	Bedroom	11'3" x 10'0"	112 sq. ft	Yes
11	Foyer	6'5" x 8'2"	53 sq. ft	Yes

Home data report

1311 S Canyon Oaks Way,Chandler,AZ,US

#		Dimensions	sqft	Counted as living area
12	Garage	19'4" x 35'10"	694 sq. ft	No
13	Primary Bath	10'9" x 11'5"	123 sq. ft	Yes
14	Living Room	26'6" x 18'3"	484 sq. ft	Yes
15	Hall	6'1" x 16'0"	97 sq. ft	Yes

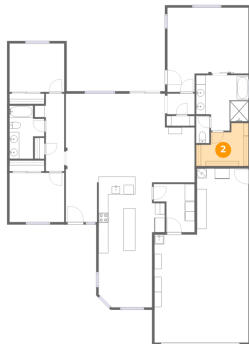
1 Floor 1 - Primary Bedroom



Dimensions: 16'8" x 17'4"
Area: 289 sq. ft
Counted as living area: Yes

Heated: Yes
Finished: Yes
Enclosed: Yes
Contiguous: Yes
Permitted: Yes
Wet space: No
Addition: No
Conversion: No

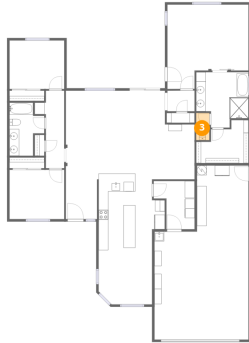
2 Floor 1 - W.I.C.



Dimensions: 10'9" x 8'10"
Area: 95 sq. ft
Counted as living area: Yes

Heated: Yes
Finished: Yes
Enclosed: Yes
Contiguous: Yes
Permitted: Yes
Wet space: No
Addition: No
Conversion: No

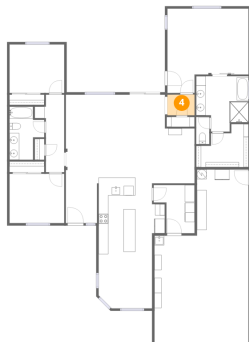
3 Floor 1 - Bath



Dimensions: 2'9" x 5'7"
Area: 15 sq. ft
Counted as living area: Yes

Heated: Yes
Finished: Yes
Enclosed: Yes
Contiguous: Yes
Permitted: Yes
Wet space: Yes
Addition: No
Conversion: No

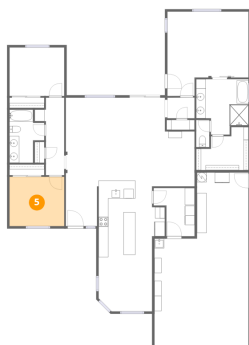
4 Floor 1 - Hall



Dimensions: 5'7" x 4'3"
Area: 24 sq. ft
Counted as living area: Yes

Heated: Yes
Finished: Yes
Enclosed: Yes
Contiguous: Yes
Permitted: Yes
Wet space: No
Addition: No
Conversion: No

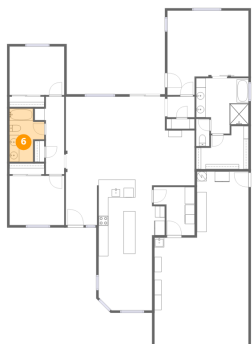
5 Floor 1 - Bedroom



Dimensions: 11'3" x 10'2"
Area: 115 sq. ft
Counted as living area: Yes

Heated: Yes
Finished: Yes
Enclosed: Yes
Contiguous: Yes
Permitted: Yes
Wet space: No
Addition: No
Conversion: No

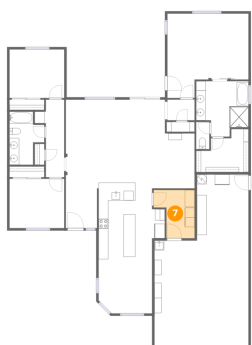
6 Floor 1 - Bath



Dimensions: 7'1" x 10'11"
Area: 78 sq. ft
Counted as living area: Yes

Heated: Yes
Finished: Yes
Enclosed: Yes
Contiguous: Yes
Permitted: Yes
Wet space: Yes
Addition: No
Conversion: No

7 Floor 1 - Laundry



Dimensions: 8'5" x 9'11"
Area: 84 sq. ft
Counted as living area: Yes

Heated: Yes
Finished: Yes
Enclosed: Yes
Contiguous: Yes
Permitted: Yes
Wet space: No
Addition: No
Conversion: No

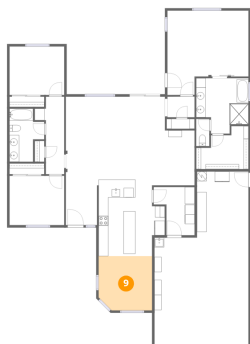
8 Floor 1 - Kitchen



Dimensions: 13'8" x 14'7"
Area: 198 sq. ft
Counted as living area: Yes

Heated: Yes
Finished: Yes
Enclosed: Yes
Contiguous: Yes
Permitted: Yes
Wet space: No
Addition: No
Conversion: No

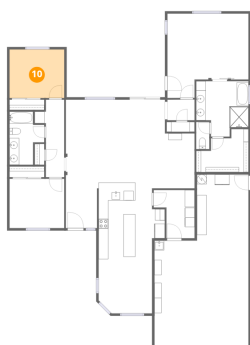
9 Floor 1 - Dining Area



Dimensions: 11'0" x 11'2"
Area: 123 sq. ft
Counted as living area: Yes

Heated: Yes
Finished: Yes
Enclosed: Yes
Contiguous: Yes
Permitted: Yes
Wet space: No
Addition: No
Conversion: No

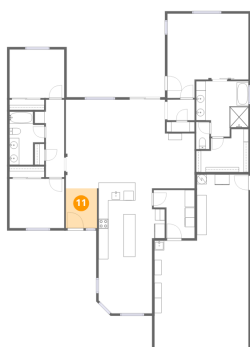
10 Floor 1 - Bedroom



Dimensions: 11'3" x 10'0"
Area: 112 sq. ft
Counted as living area: Yes

Heated: Yes
Finished: Yes
Enclosed: Yes
Contiguous: Yes
Permitted: Yes
Wet space: No
Addition: No
Conversion: No

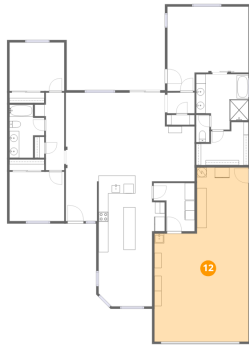
11 Floor 1 - Foyer



Dimensions: 6'5" x 8'2"
Area: 53 sq. ft
Counted as living area: Yes

Heated: Yes
Finished: Yes
Enclosed: Yes
Contiguous: Yes
Permitted: Yes
Wet space: No
Addition: No
Conversion: No

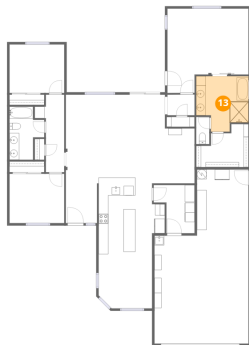
12 Floor 1 - Garage



Dimensions: 19'4" x 35'10"
Area: 694 sq. ft
Counted as living area: No

Heated: No
Finished: No
Enclosed: Yes
Contiguous: Yes
Permitted: Yes
Wet space: No
Addition: No
Conversion: No

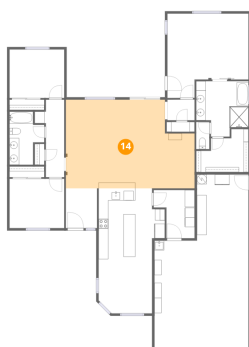
13 Floor 1 - Primary Bath



Dimensions: 10'9" x 11'5"
Area: 123 sq. ft
Counted as living area: Yes

Heated: Yes
Finished: Yes
Enclosed: Yes
Contiguous: Yes
Permitted: Yes
Wet space: Yes
Addition: No
Conversion: No

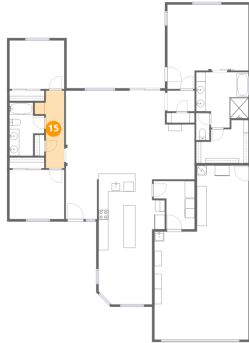
14 Floor 1 - Living Room



Dimensions: 26'6" x 18'3"
Area: 484 sq. ft
Counted as living area: Yes

Heated: Yes
Finished: Yes
Enclosed: Yes
Contiguous: Yes
Permitted: Yes
Wet space: No
Addition: No
Conversion: No

15 Floor 1 - Hall



Dimensions: 6'1" x 16'0"
Area: 97 sq. ft
Counted as living area: Yes

Heated: Yes
Finished: Yes
Enclosed: Yes
Contiguous: Yes
Permitted: Yes
Wet space: No
Addition: No
Conversion: No