

Home data report

35 Glasgow Crescent, Keswick, ON, CA




Total Area: 2020 sq. ft

Basement 2: 578 sq. ft, Basement 1: 106 sq. ft, 1st Floor: 594 sq. ft, 2nd Floor: 742 sq. ft
Excluded: Utility 50 sq. ft, Garage 200 sq. ft, Balcony 78 sq. ft, Walls: 181 sq. ft

Property summary

 **4** Floors

 **4** Bedrooms

 **2** Bathrooms

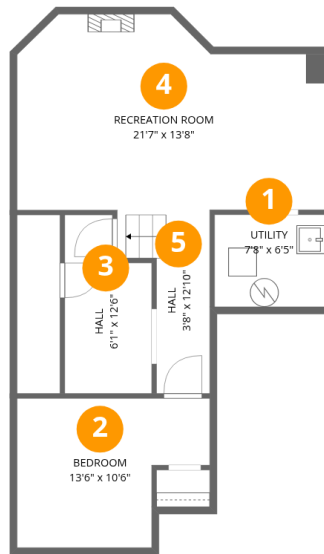
Home data report

35 Glasgow Crescent, Keswick, ON, CA

 **1**
Half baths

 **1**
Garages

35 Glasgow Crescent, Keswick, ON, CA



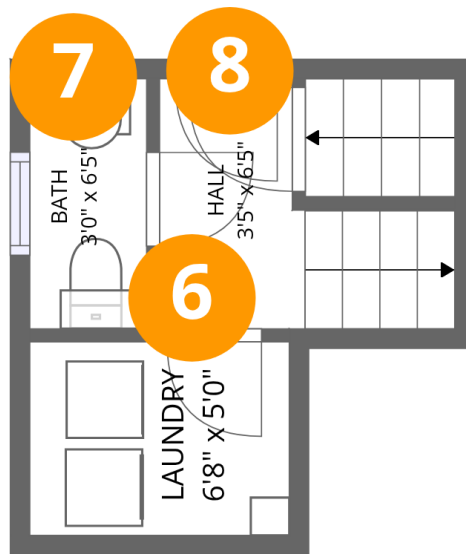
Room dimensions

Floor 1 Below grade

Total:578sqft Excluded: 50sqft

#		Dimensions	sqft	Counted as living area
1	Utility	7'8" x 6'5"	50 sq. ft	No
2	Bedroom	13'6" x 10'6"	118 sq. ft	Yes
3	Hall	6'1" x 12'6"	67 sq. ft	Yes
4	Recreation Room	21'7" x 13'8"	266 sq. ft	Yes
5	Hall	3'8" x 12'10"	57 sq. ft	Yes

35 Glasgow Crescent, Keswick, ON, CA



Room dimensions

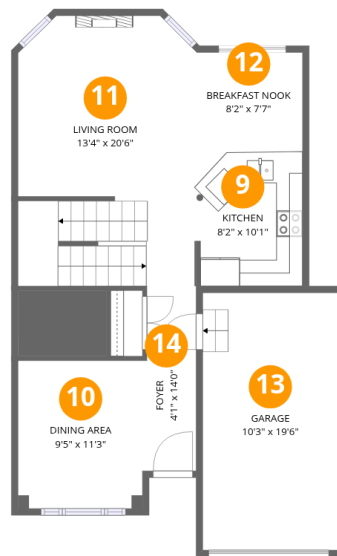
Floor 2 Below grade

Total: 106 sqft

Excluded: 0 sqft

#		Dimensions	sqft	Counted as living area
6	Laundry	6'8" x 5'0"	33 sq. ft	Yes
7	Bath	3'0" x 6'5"	19 sq. ft	Yes
8	Hall	3'5" x 6'5"	49 sq. ft	Yes

35 Glasgow Crescent, Keswick, ON, CA



Room dimensions

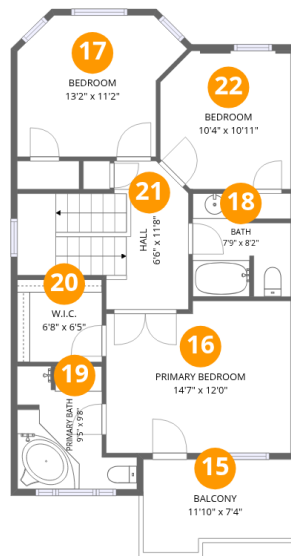
Floor 3

Total: 594sqft

Excluded: 200sqft

#		Dimensions	sqft	Counted as living area
9	Kitchen	8'2" x 10'1"	82 sq. ft	Yes
10	Dining Area	9'5" x 11'3"	106 sq. ft	Yes
11	Living Room	13'4" x 20'6"	264 sq. ft	Yes
12	Breakfast Nook	8'2" x 7'7"	62 sq. ft	Yes
13	Garage	10'3" x 19'6"	200 sq. ft	No
14	Foyer	4'1" x 14'0"	55 sq. ft	Yes

35 Glasgow Crescent, Keswick, ON, CA



Room dimensions

Floor 4

Total: 742sqft Excluded: 78sqft

#		Dimensions	sqft	Counted as living area
15	Balcony	11'10" x 7'4"	78 sq. ft	No
16	Primary Bedroom	14'7" x 12'0"	168 sq. ft	Yes
17	Bedroom	13'2" x 11'2"	124 sq. ft	Yes
18	Bath	7'9" x 8'2"	52 sq. ft	Yes
19	Primary Bath	9'5" x 9'8"	71 sq. ft	Yes
20	W.I.C.	6'8" x 6'5"	43 sq. ft	Yes
21	Hall	6'6" x 11'8"	116 sq. ft	Yes
22	Bedroom	10'4" x 10'11"	107 sq. ft	Yes

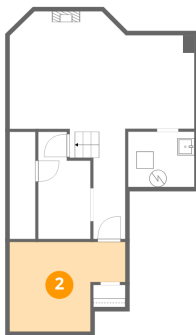
1 Floor 1 - Utility



Dimensions: 7'8" x 6'5"
Area: 50 sq. ft
Counted as living area: No

Heated: Yes
Finished: No
Enclosed: Yes
Contiguous: Yes
Permitted: Yes
Wet space: No
Addition: No
Conversion: No

2 Floor 1 - Bedroom



Dimensions: 13'6" x 10'6"
Area: 118 sq. ft
Counted as living area: Yes

Heated: Yes
Finished: Yes
Enclosed: Yes
Contiguous: Yes
Permitted: Yes
Wet space: No
Addition: No
Conversion: No

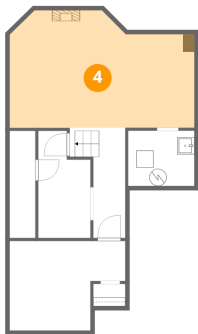
3 Floor 1 - Hall



Dimensions: 6'1" x 12'6"
Area: 67 sq. ft
Counted as living area: Yes

Heated: Yes
Finished: Yes
Enclosed: Yes
Contiguous: Yes
Permitted: Yes
Wet space: No
Addition: No
Conversion: No

4 Floor 1 - Recreation Room



Dimensions: 21'7" x 13'8"
Area: 266 sq. ft
Counted as living area: Yes

Heated: Yes
Finished: Yes
Enclosed: Yes
Contiguous: Yes
Permitted: Yes
Wet space: No
Addition: No
Conversion: No

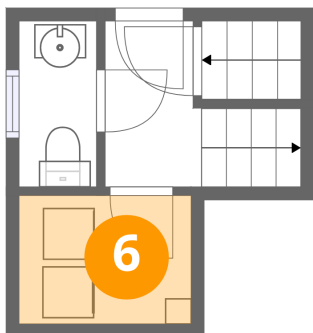
5 Floor 1 - Hall



Dimensions: 3'8" x 12'10"
Area: 57 sq. ft
Counted as living area: Yes

Heated: Yes
Finished: Yes
Enclosed: Yes
Contiguous: Yes
Permitted: Yes
Wet space: No
Addition: No
Conversion: No

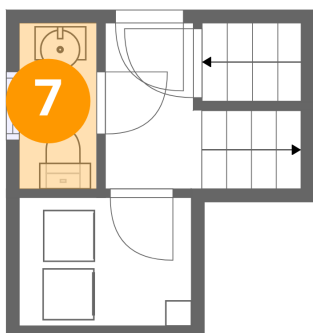
6 Floor 2 - Laundry



Dimensions: 6'8" x 5'0"
Area: 33 sq. ft
Counted as living area: Yes

Heated: Yes
Finished: Yes
Enclosed: Yes
Contiguous: Yes
Permitted: Yes
Wet space: No
Addition: No
Conversion: No

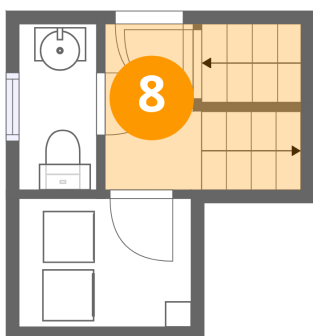
7 Floor 2 - Bath



Dimensions: 3'0" x 6'5"
Area: 19 sq. ft
Counted as living area: Yes

Heated: Yes
Finished: Yes
Enclosed: Yes
Contiguous: Yes
Permitted: Yes
Wet space: Yes
Addition: No
Conversion: No

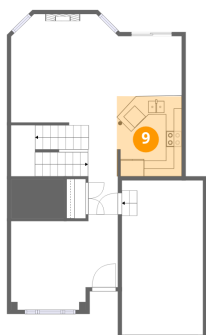
8 Floor 2 - Hall



Dimensions: 3'5" x 6'5"
Area: 49 sq. ft
Counted as living area: Yes

Heated: Yes
Finished: Yes
Enclosed: Yes
Contiguous: Yes
Permitted: Yes
Wet space: No
Addition: No
Conversion: No

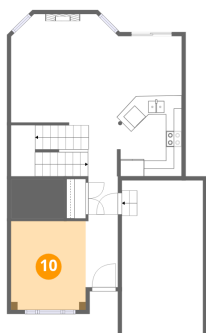
9 Floor 3 - Kitchen



Dimensions: 8'2" x 10'1"
Area: 82 sq. ft
Counted as living area: Yes

Heated: Yes
Finished: Yes
Enclosed: Yes
Contiguous: Yes
Permitted: Yes
Wet space: No
Addition: No
Conversion: No

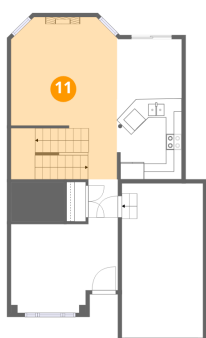
10 Floor 3 - Dining Area



Dimensions: 9'5" x 11'3"
Area: 106 sq. ft
Counted as living area: Yes

Heated: Yes
Finished: Yes
Enclosed: Yes
Contiguous: Yes
Permitted: Yes
Wet space: No
Addition: No
Conversion: No

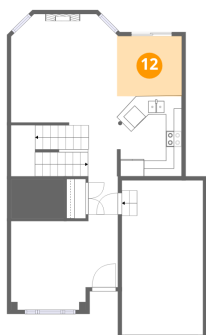
11 Floor 3 - Living Room



Dimensions: 13'4" x 20'6"
Area: 264 sq. ft
Counted as living area: Yes

Heated: Yes
Finished: Yes
Enclosed: Yes
Contiguous: Yes
Permitted: Yes
Wet space: No
Addition: No
Conversion: No

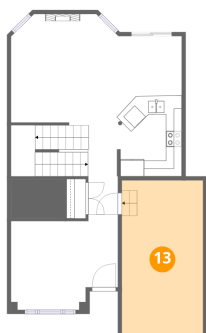
12 Floor 3 - Breakfast Nook



Dimensions: 8'2" x 7'7"
Area: 62 sq. ft
Counted as living area: Yes

Heated: Yes
Finished: Yes
Enclosed: Yes
Contiguous: Yes
Permitted: Yes
Wet space: No
Addition: No
Conversion: No

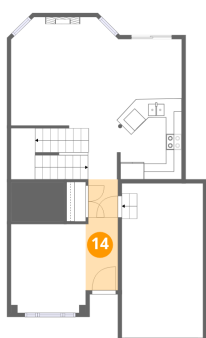
13 Floor 3 - Garage



Dimensions: 10'3" x 19'6"
Area: 200 sq. ft
Counted as living area: No

Heated: No
Finished: No
Enclosed: Yes
Contiguous: Yes
Permitted: Yes
Wet space: No
Addition: No
Conversion: No

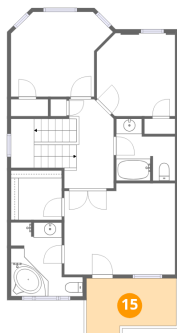
14 Floor 3 - Foyer



Dimensions: 4'1" x 14'0"
Area: 55 sq. ft
Counted as living area: Yes

Heated: Yes
Finished: Yes
Enclosed: Yes
Contiguous: Yes
Permitted: Yes
Wet space: No
Addition: No
Conversion: No

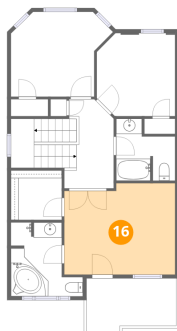
15 Floor 4 - Balcony



Dimensions: 11'10" x 7'4"
Area: 78 sq. ft
Counted as living area: No

Heated: No
Finished: No
Enclosed: No
Contiguous: Yes
Permitted: Yes
Wet space: No
Addition: No
Conversion: No

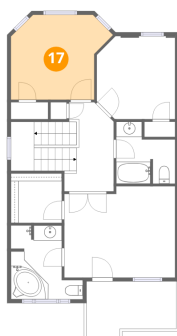
16 Floor 4 - Primary Bedroom



Dimensions: 14'7" x 12'0"
Area: 168 sq. ft
Counted as living area: Yes

Heated: Yes
Finished: Yes
Enclosed: Yes
Contiguous: Yes
Permitted: Yes
Wet space: No
Addition: No
Conversion: No

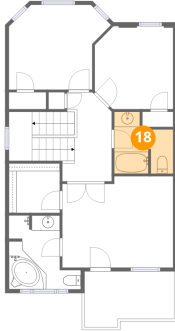
17 Floor 4 - Bedroom



Dimensions: 13'2" x 11'2"
Area: 124 sq. ft
Counted as living area: Yes

Heated: Yes
Finished: Yes
Enclosed: Yes
Contiguous: Yes
Permitted: Yes
Wet space: No
Addition: No
Conversion: No

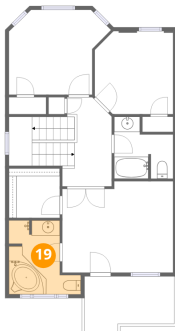
18 Floor 4 - Bath



Dimensions: 7'9" x 8'2"
Area: 52 sq. ft
Counted as living area: Yes

Heated: Yes
Finished: Yes
Enclosed: Yes
Contiguous: Yes
Permitted: Yes
Wet space: Yes
Addition: No
Conversion: No

19 Floor 4 - Primary Bath



Dimensions: 9'5" x 9'8"
Area: 71 sq. ft
Counted as living area: Yes

Heated: Yes
Finished: Yes
Enclosed: Yes
Contiguous: Yes
Permitted: Yes
Wet space: Yes
Addition: No
Conversion: No

20 Floor 4 - W.I.C.



Dimensions: 6'8" x 6'5"
Area: 43 sq. ft
Counted as living area: Yes

Heated: Yes
Finished: Yes
Enclosed: Yes
Contiguous: Yes
Permitted: Yes
Wet space: No
Addition: No
Conversion: No

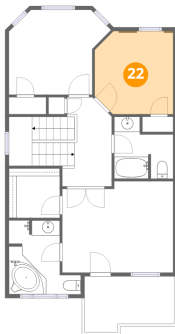
21 Floor 4 - Hall



Dimensions: 6'6" x 11'8"
Area: 116 sq. ft
Counted as living area: Yes

Heated: Yes
Finished: Yes
Enclosed: Yes
Contiguous: Yes
Permitted: Yes
Wet space: No
Addition: No
Conversion: No

22 Floor 4 - Bedroom



Dimensions: 10'4" x 10'11"
Area: 107 sq. ft
Counted as living area: Yes

Heated: Yes
Finished: Yes
Enclosed: Yes
Contiguous: Yes
Permitted: Yes
Wet space: No
Addition: No
Conversion: No