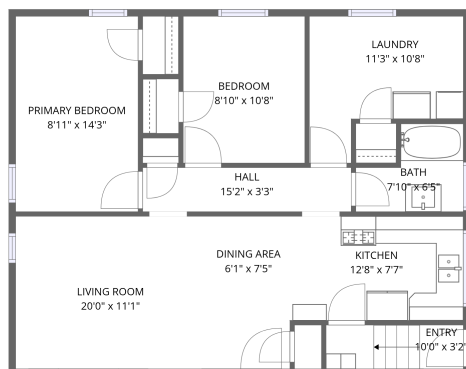
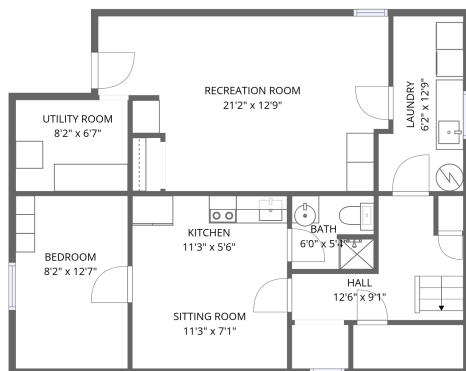


Home data report

# 679 Bellaire St, Peterborough, ON, CA



2nd floor



1st floor

**Total Area: 1583 sq. ft**

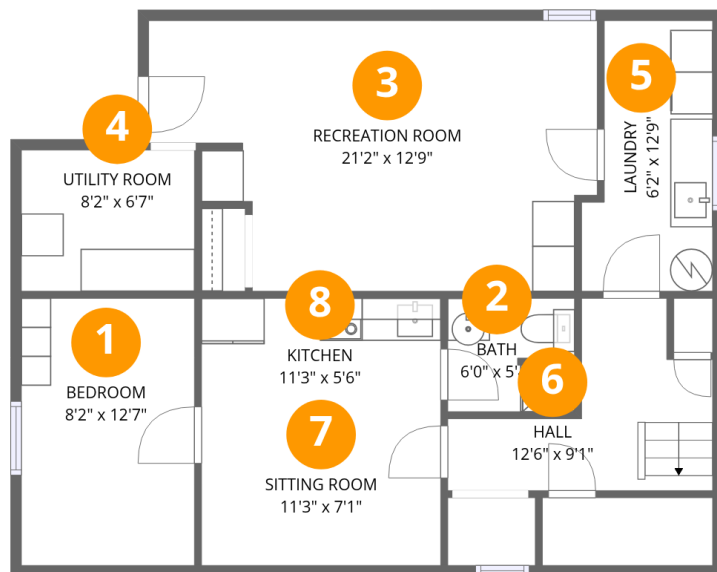
1st Floor: 746 sq. ft, 2nd Floor: 837 sq. ft

Excluded: Utility room 54 sq. ft, Walls: 120 sq. ft

## Property summary



# 679 Bellaire St, Peterborough, ON, CA



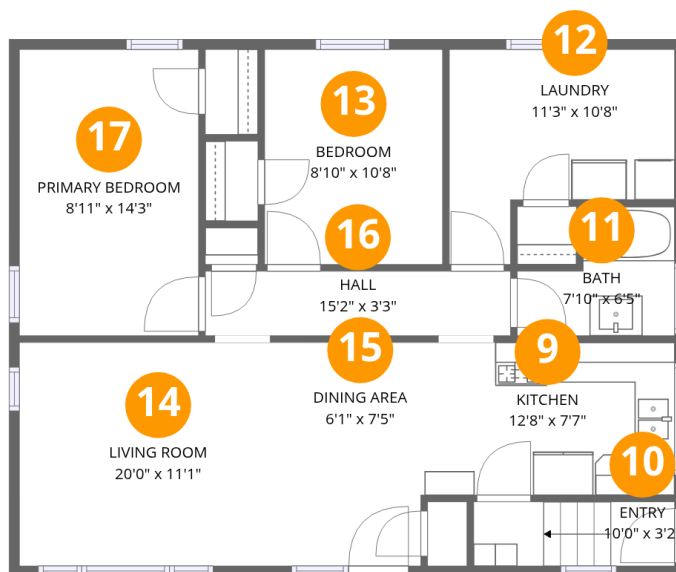
## Room dimensions

Floor 1

Total: 746 sqft Excluded: 54 sqft

#		Dimensions	sqft	Counted as living area
1	Bedroom	8'2" x 12'7"	103 sq. ft	Yes
2	Bath	6'0" x 5'4"	31 sq. ft	Yes
3	Recreation Room	21'2" x 12'9"	237 sq. ft	Yes
4	Utility Room	8'2" x 6'7"	54 sq. ft	No
5	Laundry	6'2" x 12'9"	70 sq. ft	Yes
6	Hall	12'6" x 9'1"	71 sq. ft	Yes
7	Sitting Room	11'3" x 7'1"	80 sq. ft	Yes
8	Kitchen	11'3" x 5'6"	62 sq. ft	Yes

# 679 Bellaire St, Peterborough, ON, CA



## Room dimensions

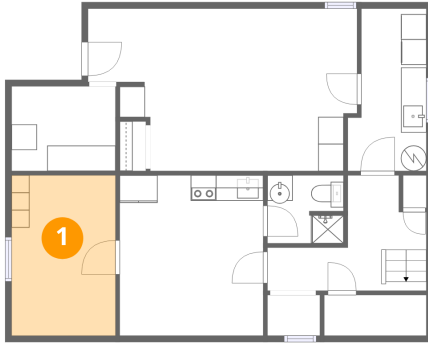
Floor 2

Total: 837 sqft

Excluded: 0 sqft

#		Dimensions	sqft	Counted as living area
9	Kitchen	12'8" x 7'7"	96 sq. ft	Yes
10	Entry	10'0" x 3'2"	32 sq. ft	Yes
11	Bath	7'10" x 6'5"	40 sq. ft	Yes
12	Laundry	11'3" x 10'8"	94 sq. ft	Yes
13	Bedroom	8'10" x 10'8"	95 sq. ft	Yes
14	Living Room	20'0" x 11'1"	177 sq. ft	Yes
15	Dining Area	6'1" x 7'5"	45 sq. ft	Yes
16	Hall	15'2" x 3'3"	49 sq. ft	Yes
17	Primary Bedroom	8'11" x 14'3"	127 sq. ft	Yes

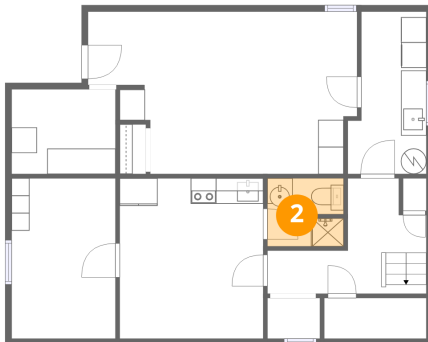
## 1 Floor 1 - Bedroom



Dimensions: 8'2" x 12'7"  
Area: 103 sq. ft  
Counted as living area: Yes

Heated: Yes  
Finished: Yes  
Enclosed: Yes  
Contiguous: Yes  
Permitted: Yes  
Wet space: No  
Addition: No  
Conversion: No

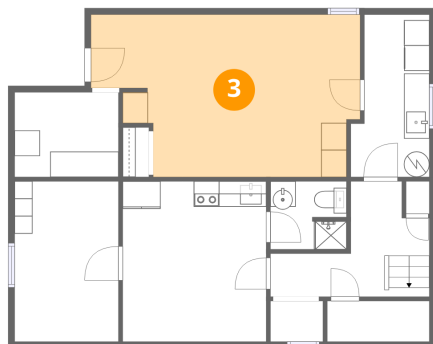
## 2 Floor 1 - Bath



Dimensions: 6'0" x 5'4"  
Area: 31 sq. ft  
Counted as living area: Yes

Heated: Yes  
Finished: Yes  
Enclosed: Yes  
Contiguous: Yes  
Permitted: Yes  
Wet space: Yes  
Addition: No  
Conversion: No

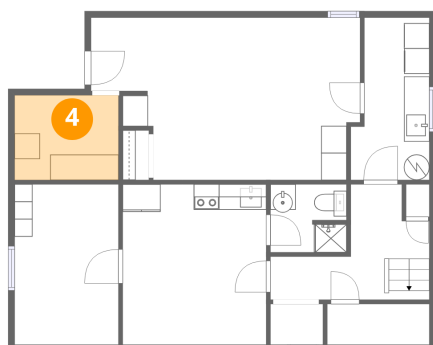
### 3 Floor 1 - Recreation Room



Dimensions: 21'2" x 12'9"  
Area: 237 sq. ft  
Counted as living area: Yes

Heated: Yes  
Finished: Yes  
Enclosed: Yes  
Contiguous: Yes  
Permitted: Yes  
Wet space: No  
Addition: No  
Conversion: No

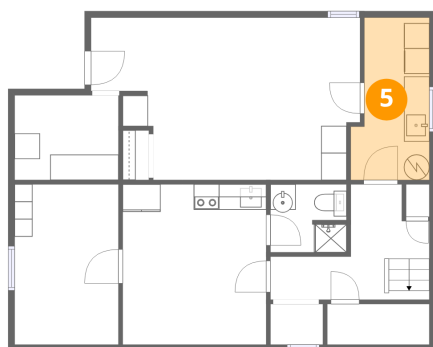
### 4 Floor 1 - Utility Room



Dimensions: 8'2" x 6'7"  
Area: 54 sq. ft  
Counted as living area: No

Heated: Yes  
Finished: No  
Enclosed: Yes  
Contiguous: Yes  
Permitted: Yes  
Wet space: No  
Addition: No  
Conversion: No

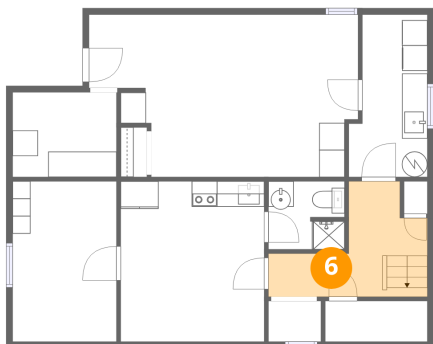
### 5 Floor 1 - Laundry



Dimensions: 6'2" x 12'9"  
Area: 70 sq. ft  
Counted as living area: Yes

Heated: Yes  
Finished: Yes  
Enclosed: Yes  
Contiguous: Yes  
Permitted: Yes  
Wet space: No  
Addition: No  
Conversion: No

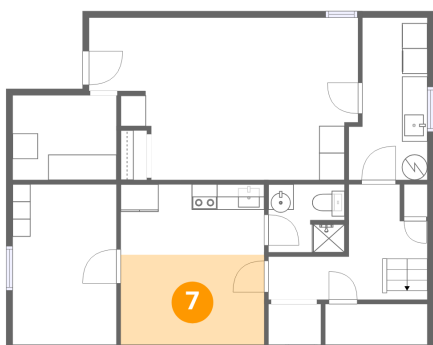
### 6 Floor 1 - Hall



Dimensions: 12'6" x 9'1"  
Area: 71 sq. ft  
Counted as living area: Yes

Heated: Yes  
Finished: Yes  
Enclosed: Yes  
Contiguous: Yes  
Permitted: Yes  
Wet space: No  
Addition: No  
Conversion: No

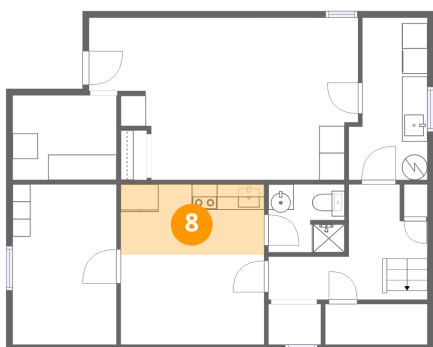
### 7 Floor 1 - Sitting Room



Dimensions: 11'3" x 7'1"  
Area: 80 sq. ft  
Counted as living area: Yes

Heated: Yes  
Finished: Yes  
Enclosed: Yes  
Contiguous: Yes  
Permitted: Yes  
Wet space: No  
Addition: No  
Conversion: No

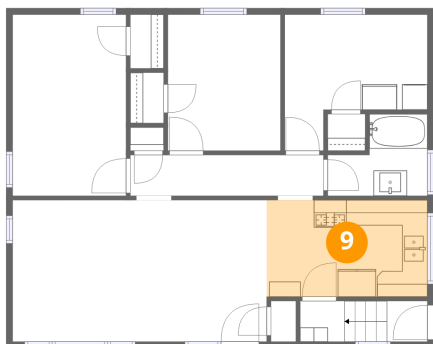
### 8 Floor 1 - Kitchen



Dimensions: 11'3" x 5'6"  
Area: 62 sq. ft  
Counted as living area: Yes

Heated: Yes  
Finished: Yes  
Enclosed: Yes  
Contiguous: Yes  
Permitted: Yes  
Wet space: No  
Addition: No  
Conversion: No

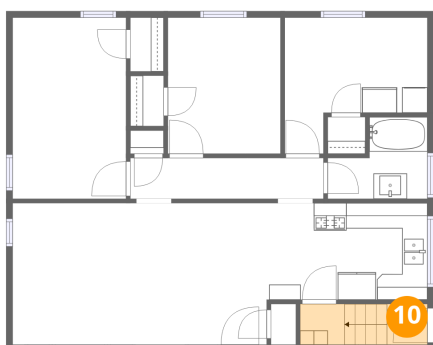
## 9 Floor 2 - Kitchen



Dimensions: 12'8" x 7'7"  
Area: 96 sq. ft  
Counted as living area: Yes

Heated: Yes  
Finished: Yes  
Enclosed: Yes  
Contiguous: Yes  
Permitted: Yes  
Wet space: No  
Addition: No  
Conversion: No

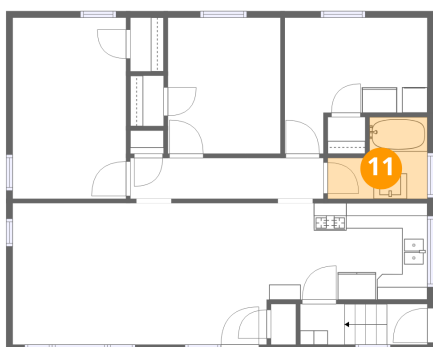
## 10 Floor 2 - Entry



Dimensions: 10'0" x 3'2"  
Area: 32 sq. ft  
Counted as living area: Yes

Heated: Yes  
Finished: Yes  
Enclosed: Yes  
Contiguous: Yes  
Permitted: Yes  
Wet space: No  
Addition: No  
Conversion: No

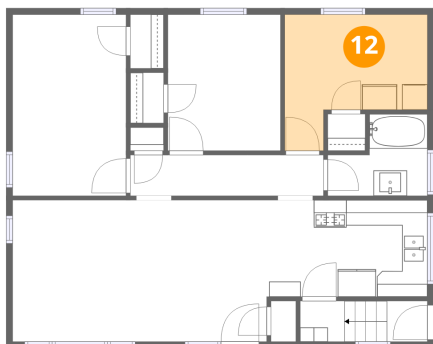
## 11 Floor 2 - Bath



Dimensions: 7'10" x 6'5"  
Area: 40 sq. ft  
Counted as living area: Yes

Heated: Yes  
Finished: Yes  
Enclosed: Yes  
Contiguous: Yes  
Permitted: Yes  
Wet space: Yes  
Addition: No  
Conversion: No

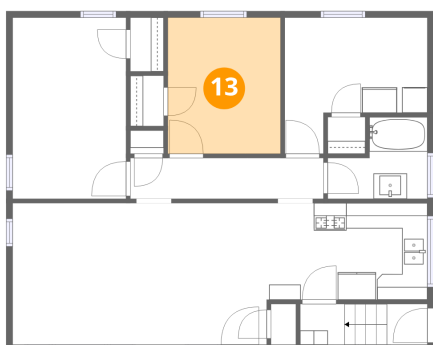
**12** Floor 2 - Laundry



Dimensions: 11'3" x 10'8"  
Area: 94 sq. ft  
Counted as living area: Yes

Heated: Yes  
Finished: Yes  
Enclosed: Yes  
Contiguous: Yes  
Permitted: Yes  
Wet space: No  
Addition: No  
Conversion: No

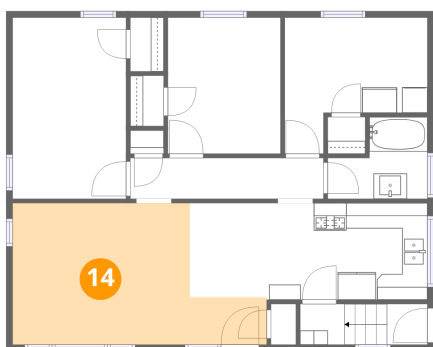
**13** Floor 2 - Bedroom



Dimensions: 8'10" x 10'8"  
Area: 95 sq. ft  
Counted as living area: Yes

Heated: Yes  
Finished: Yes  
Enclosed: Yes  
Contiguous: Yes  
Permitted: Yes  
Wet space: No  
Addition: No  
Conversion: No

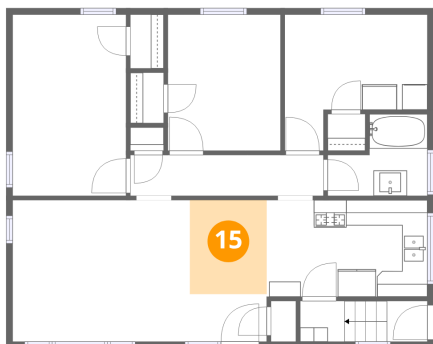
**14** Floor 2 - Living Room



Dimensions: 20'0" x 11'1"  
Area: 177 sq. ft  
Counted as living area: Yes

Heated: Yes  
Finished: Yes  
Enclosed: Yes  
Contiguous: Yes  
Permitted: Yes  
Wet space: No  
Addition: No  
Conversion: No

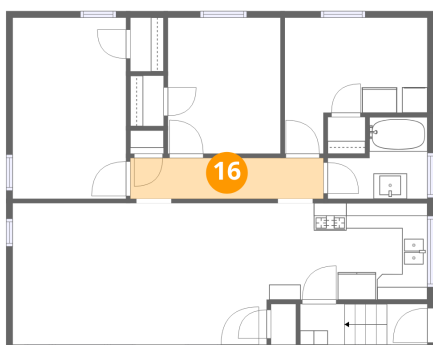
### 15 Floor 2 - Dining Area



Dimensions: 6'1" x 7'5"  
Area: 45 sq. ft  
Counted as living area: Yes

Heated: Yes  
Finished: Yes  
Enclosed: Yes  
Contiguous: Yes  
Permitted: Yes  
Wet space: No  
Addition: No  
Conversion: No

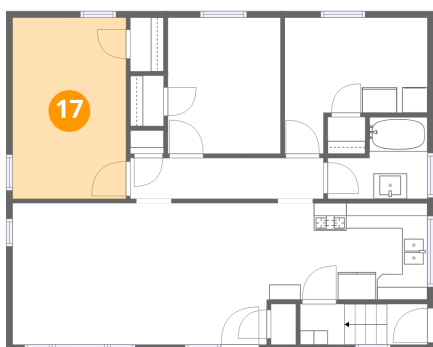
### 16 Floor 2 - Hall



Dimensions: 15'2" x 3'3"  
Area: 49 sq. ft  
Counted as living area: Yes

Heated: Yes  
Finished: Yes  
Enclosed: Yes  
Contiguous: Yes  
Permitted: Yes  
Wet space: No  
Addition: No  
Conversion: No

### 17 Floor 2 - Primary Bedroom



Dimensions: 8'11" x 14'3"  
Area: 127 sq. ft  
Counted as living area: Yes

Heated: Yes  
Finished: Yes  
Enclosed: Yes  
Contiguous: Yes  
Permitted: Yes  
Wet space: No  
Addition: No  
Conversion: No