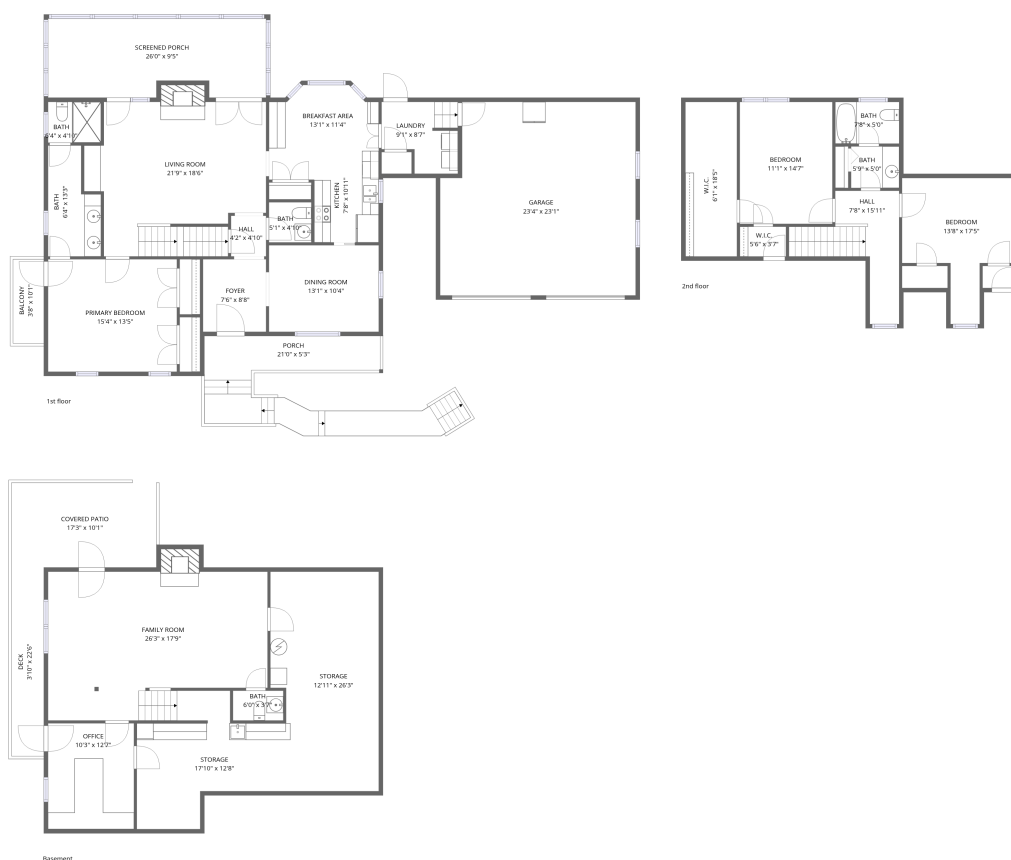


## Home data report

6658 Leffler Lane, Poages Mill Estates, Roanoke, Roanoke County, Virginia, United States, 24018



**Total Area: 2593 sq. ft**

Basement: 625 sq. ft, 1st Floor: 1270 sq. ft, 2nd Floor: 698 sq. ft


Excluded: Storage 495 sq. ft, Covered patio 175 sq. ft, Deck 87 sq. ft, Fireplace 28 sq. ft, Garage 516 sq. ft, Screened porch 233 sq. ft, Porch 102 sq. ft, Balcony 37 sq. ft, Walls: 285 sq. ft

## Property summary



Home data report

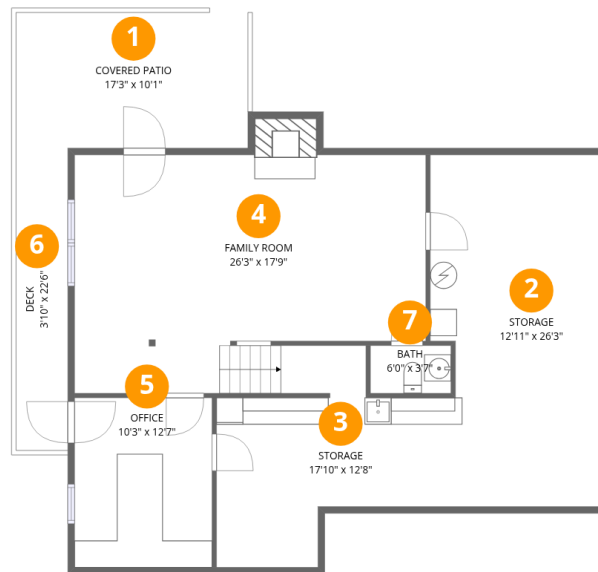
**6658 Leffler Lane, Poages Mill Estates, Roanoke, Roanoke  
County, Virginia, United States, 24018**

 **2**  
Half baths

 **1**  
Garages

## Home data report

6658 Leffler Lane, Poages Mill Estates, Roanoke, Roanoke County, Virginia, United States, 24018



## Room dimensions

Floor 1 Below grade

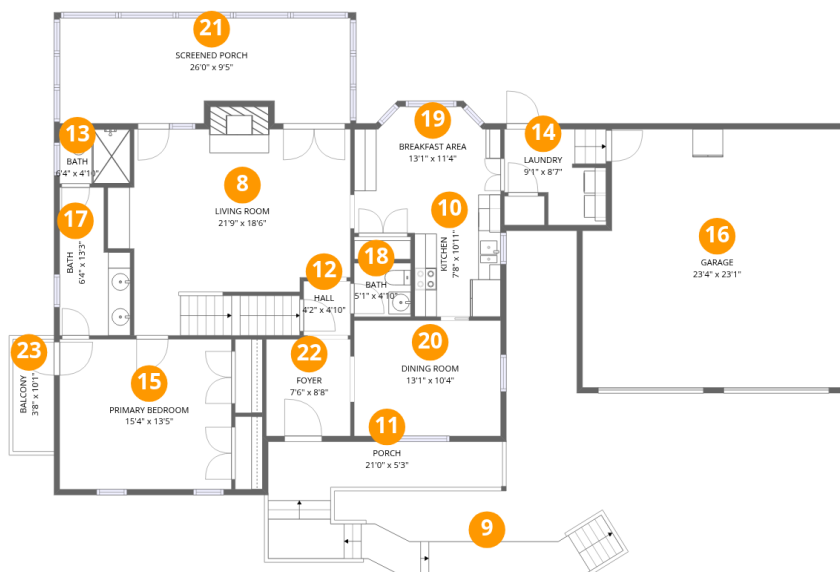
Total:625sqft

Excluded: 772sqft

#		Dimensions	sqft	Counted as living area
1	Covered Patio	17'3" x 10'1"	174 sq. ft	No
2	Storage	12'11" x 26'3"	339 sq. ft	No
3	Storage	17'10" x 12'8"	225 sq. ft	No
4	Family Room	26'3" x 17'9"	465 sq. ft	Yes
5	Office	10'3" x 12'7"	129 sq. ft	Yes
6	Deck	3'10" x 22'6"	86 sq. ft	No
7	Bath	6'0" x 3'7"	21 sq. ft	Yes

## Home data report

6658 Leffler Lane, Poages Mill Estates, Roanoke, Roanoke County, Virginia, United States, 24018



## Room dimensions

Floor 2

Total:1270sqft

Excluded: 901sqft

#		Dimensions	sqft	Counted as living area
8	Living Room	21'9" x 18'6"	401 sq. ft	Yes
9	Walking Path	28'0" x 3'0"	84 sq. ft	No
10	Kitchen	7'8" x 10'11"	84 sq. ft	Yes
11	Porch	21'0" x 5'3"	111 sq. ft	No
12	Hall	4'2" x 4'10"	20 sq. ft	Yes
13	Bath	6'4" x 4'10"	31 sq. ft	Yes
14	Laundry	9'1" x 8'7"	78 sq. ft	Yes
15	Primary Bedroom	15'4" x 13'5"	206 sq. ft	Yes
16	Garage	23'4" x 23'1"	538 sq. ft	No
17	Bath	6'4" x 13'3"	83 sq. ft	Yes
18	Bath	5'1" x 4'10"	24 sq. ft	Yes

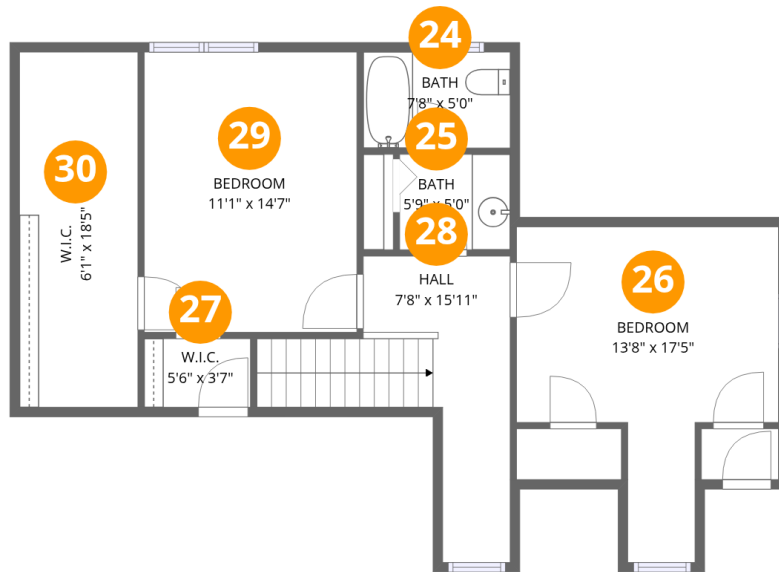
Home data report

**6658 Leffler Lane, Poages Mill Estates, Roanoke, Roanoke County, Virginia, United States, 24018**

#		Dimensions	sqft	Counted as living area
19	Breakfast Area	13'1" x 11'4"	148 sq. ft	Yes
20	Dining Room	13'1" x 10'4"	136 sq. ft	Yes
21	Screened Porch	26'0" x 9'5"	245 sq. ft	No
22	Foyer	7'6" x 8'8"	65 sq. ft	Yes
23	Balcony	3'8" x 10'1"	37 sq. ft	No

Home data report

6658 Leffler Lane, Poages Mill Estates, Roanoke, Roanoke County, Virginia, United States, 24018



## Room dimensions

Floor 3

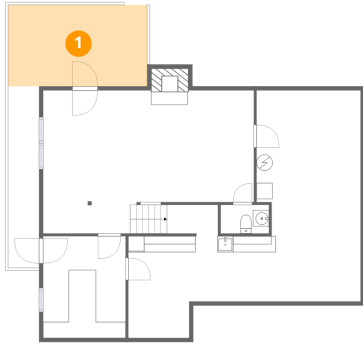
Total:698sqft

Excluded: 0sqft

#		Dimensions	sqft	Counted as living area
24	Bath	7'8" x 5'0"	38 sq. ft	Yes
25	Bath	5'9" x 5'0"	28 sq. ft	Yes
26	Bedroom	13'8" x 17'5"	238 sq. ft	Yes
27	W.I.C.	5'6" x 3'7"	20 sq. ft	Yes
28	Hall	7'8" x 15'11"	122 sq. ft	Yes
29	Bedroom	11'1" x 14'7"	161 sq. ft	Yes
30	W.I.C.	6'1" x 18'5"	112 sq. ft	Yes

# 6658 Leffler Lane, Poages Mill Estates, Roanoke, Roanoke County, Virginia, United States, 24018

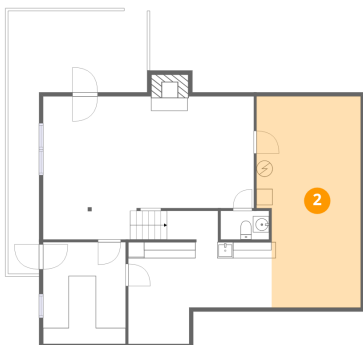
## 1 Floor 1 - Covered Patio



Dimensions: 17'3" x 10'1"  
Area: 174 sq. ft  
Counted as living area: No

Heated: No  
Finished: No  
Enclosed: No  
Contiguous: Yes  
Permitted: Yes  
Wet space: No  
Addition: No  
Conversion: No

## 2 Floor 1 - Storage

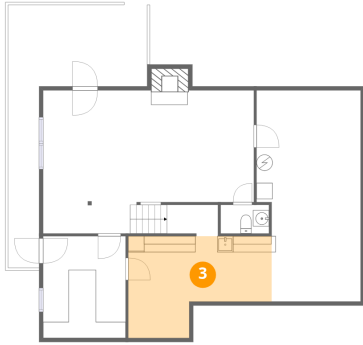


Dimensions: 12'11" x 26'3"  
Area: 339 sq. ft  
Counted as living area: No

Heated: No  
Finished: No  
Enclosed: No  
Contiguous: Yes  
Permitted: Yes  
Wet space: No  
Addition: No  
Conversion: No

6658 Leffler Lane, Poages Mill Estates, Roanoke, Roanoke County, Virginia, United States, 24018

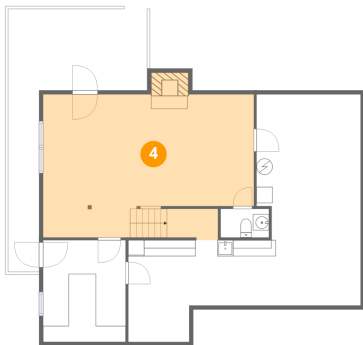
**3** Floor 1 - Storage



Dimensions: 17'10" x 12'8"  
Area: 225 sq. ft  
Counted as living area: No

Heated: No  
Finished: No  
Enclosed: No  
Contiguous: Yes  
Permitted: Yes  
Wet space: No  
Addition: No  
Conversion: No

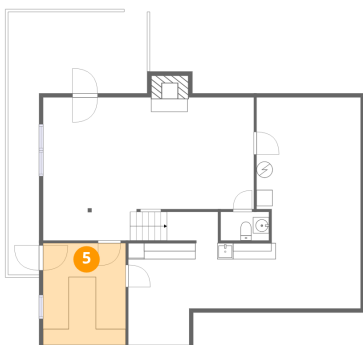
**4** Floor 1 - Family Room



Dimensions: 26'3" x 17'9"  
Area: 465 sq. ft  
Counted as living area: Yes

Heated: Yes  
Finished: Yes  
Enclosed: Yes  
Contiguous: Yes  
Permitted: Yes  
Wet space: No  
Addition: No  
Conversion: No

**5** Floor 1 - Office

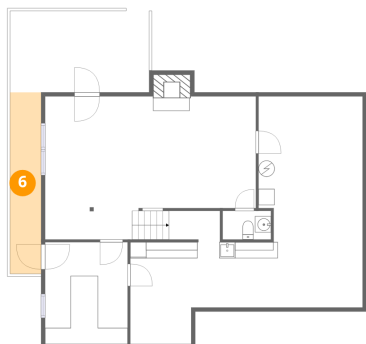


Dimensions: 10'3" x 12'7"  
Area: 129 sq. ft  
Counted as living area: Yes

Heated: Yes  
Finished: Yes  
Enclosed: Yes  
Contiguous: Yes  
Permitted: Yes  
Wet space: No  
Addition: No  
Conversion: No

6658 Leffler Lane, Poages Mill Estates, Roanoke, Roanoke County, Virginia, United States, 24018

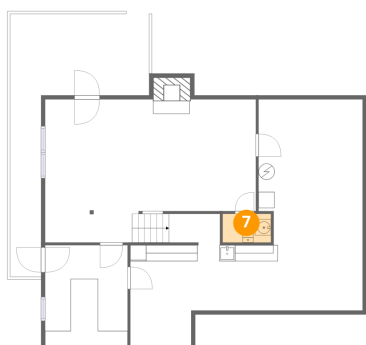
**6** Floor 1 - Deck



Dimensions: 3'10" x 22'6"  
Area: 86 sq. ft  
Counted as living area: No

Heated: No  
Finished: No  
Enclosed: No  
Contiguous: Yes  
Permitted: Yes  
Wet space: No  
Addition: No  
Conversion: No

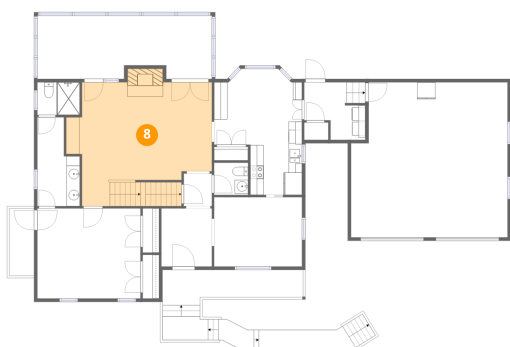
**7** Floor 1 - Bath



Dimensions: 6'0" x 3'7"  
Area: 21 sq. ft  
Counted as living area: Yes

Heated: Yes  
Finished: Yes  
Enclosed: Yes  
Contiguous: Yes  
Permitted: Yes  
Wet space: Yes  
Addition: No  
Conversion: No

**8** Floor 2 - Living Room

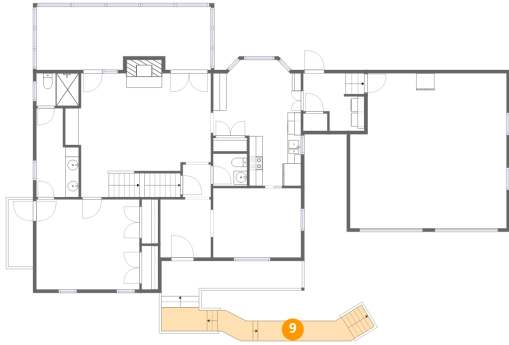


Dimensions: 21'9" x 18'6"  
Area: 401 sq. ft  
Counted as living area: Yes

Heated: Yes  
Finished: Yes  
Enclosed: Yes  
Contiguous: Yes  
Permitted: Yes  
Wet space: No  
Addition: No  
Conversion: No

6658 Leffler Lane, Poages Mill Estates, Roanoke, Roanoke County, Virginia, United States, 24018

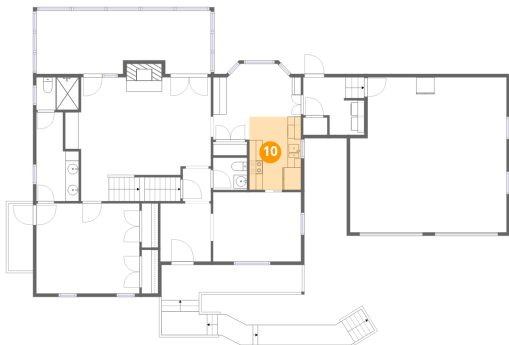
**9** Floor 2 - Walking Path



Dimensions: 28'0" x 3'0"  
Area: 84 sq. ft  
Counted as living area: No

Heated: No  
Finished: No  
Enclosed: No  
Contiguous: Yes  
Permitted: No  
Wet space: No  
Addition: No  
Conversion: No

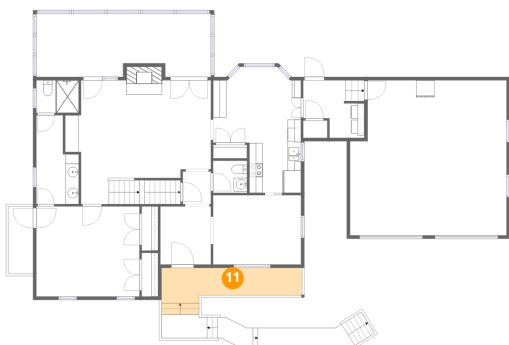
**10** Floor 2 - Kitchen



Dimensions: 7'8" x 10'11"  
Area: 84 sq. ft  
Counted as living area: Yes

Heated: Yes  
Finished: Yes  
Enclosed: Yes  
Contiguous: Yes  
Permitted: Yes  
Wet space: No  
Addition: No  
Conversion: No

**11** Floor 2 - Porch

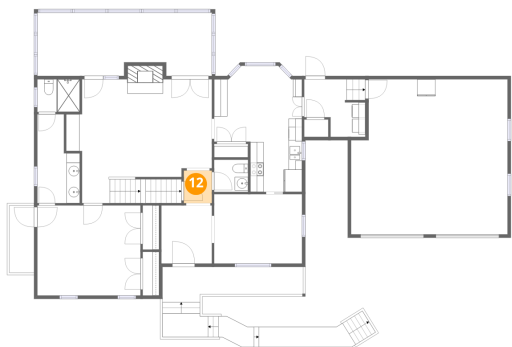


Dimensions: 21'0" x 5'3"  
Area: 111 sq. ft  
Counted as living area: No

Heated: No  
Finished: No  
Enclosed: No  
Contiguous: Yes  
Permitted: Yes  
Wet space: No  
Addition: No  
Conversion: No

6658 Leffler Lane, Poages Mill Estates, Roanoke, Roanoke County, Virginia, United States, 24018

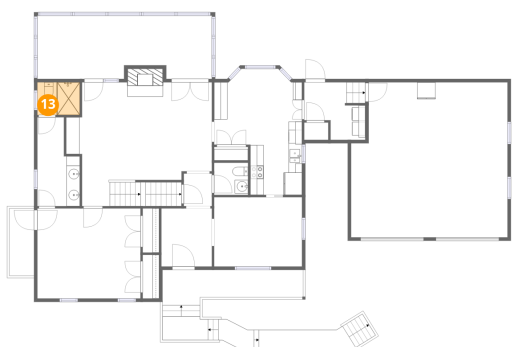
12 Floor 2 - Hall



Dimensions: 4'2" x 4'10"  
Area: 20 sq. ft  
Counted as living area: Yes

Heated: Yes  
Finished: Yes  
Enclosed: Yes  
Contiguous: Yes  
Permitted: Yes  
Wet space: No  
Addition: No  
Conversion: No

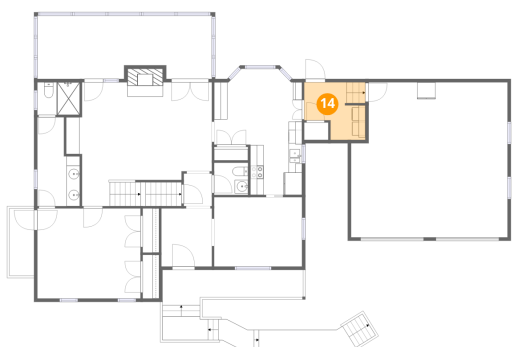
13 Floor 2 - Bath



Dimensions: 6'4" x 4'10"  
Area: 31 sq. ft  
Counted as living area: Yes

Heated: Yes  
Finished: Yes  
Enclosed: Yes  
Contiguous: Yes  
Permitted: Yes  
Wet space: Yes  
Addition: No  
Conversion: No

14 Floor 2 - Laundry



Dimensions: 9'1" x 8'7"  
Area: 78 sq. ft  
Counted as living area: Yes

Heated: Yes  
Finished: Yes  
Enclosed: Yes  
Contiguous: Yes  
Permitted: Yes  
Wet space: No  
Addition: No  
Conversion: No

# 6658 Leffler Lane, Poages Mill Estates, Roanoke, Roanoke County, Virginia, United States, 24018

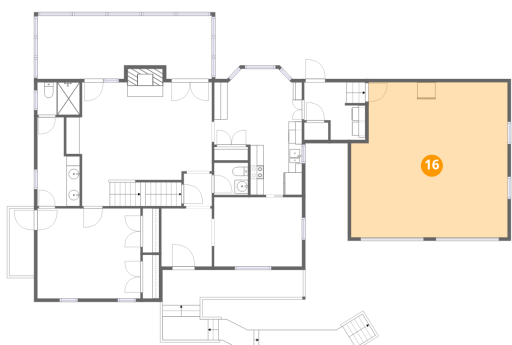
## 15 Floor 2 - Primary Bedroom



Dimensions: 15'4" x 13'5"  
Area: 206 sq. ft  
Counted as living area: Yes

Heated: Yes  
Finished: Yes  
Enclosed: Yes  
Contiguous: Yes  
Permitted: Yes  
Wet space: No  
Addition: No  
Conversion: No

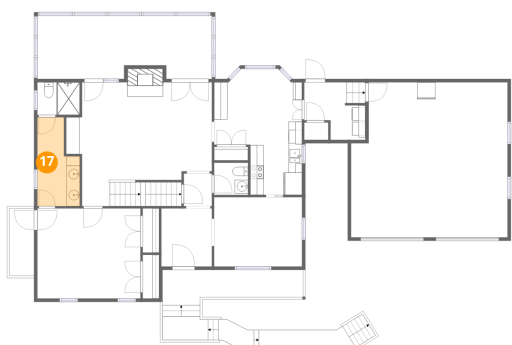
## 16 Floor 2 - Garage



Dimensions: 23'4" x 23'1"  
Area: 538 sq. ft  
Counted as living area: No

Heated: No  
Finished: No  
Enclosed: Yes  
Contiguous: Yes  
Permitted: Yes  
Wet space: No  
Addition: No  
Conversion: No

## 17 Floor 2 - Bath



Dimensions: 6'4" x 13'3"  
Area: 83 sq. ft  
Counted as living area: Yes

Heated: Yes  
Finished: Yes  
Enclosed: Yes  
Contiguous: Yes  
Permitted: Yes  
Wet space: Yes  
Addition: No  
Conversion: No

6658 Leffler Lane, Poages Mill Estates, Roanoke, Roanoke County, Virginia, United States, 24018

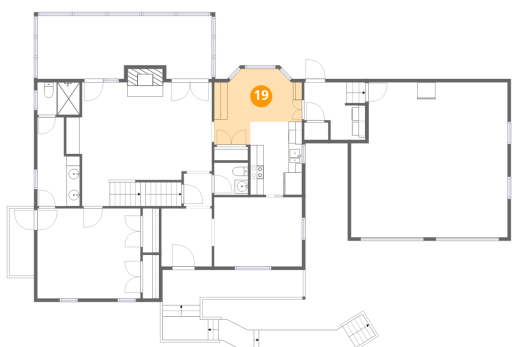
**18** Floor 2 - Bath



Dimensions: 5'1" x 4'10"  
Area: 24 sq. ft  
Counted as living area: Yes

Heated: Yes  
Finished: Yes  
Enclosed: Yes  
Contiguous: Yes  
Permitted: Yes  
Wet space: Yes  
Addition: No  
Conversion: No

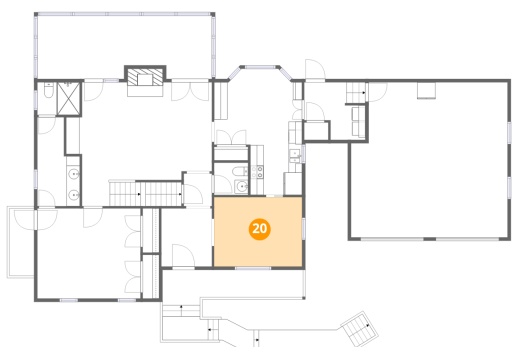
**19** Floor 2 - Breakfast Area



Dimensions: 13'1" x 11'4"  
Area: 148 sq. ft  
Counted as living area: Yes

Heated: Yes  
Finished: Yes  
Enclosed: Yes  
Contiguous: Yes  
Permitted: Yes  
Wet space: No  
Addition: No  
Conversion: No

**20** Floor 2 - Dining Room

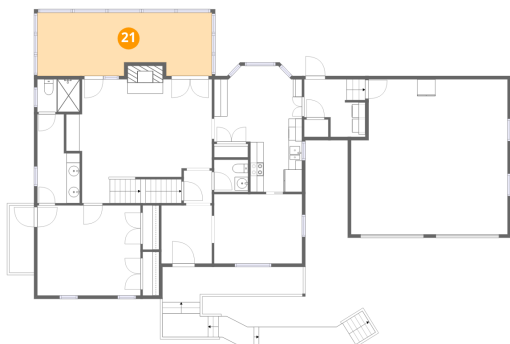


Dimensions: 13'1" x 10'4"  
Area: 136 sq. ft  
Counted as living area: Yes

Heated: Yes  
Finished: Yes  
Enclosed: Yes  
Contiguous: Yes  
Permitted: Yes  
Wet space: No  
Addition: No  
Conversion: No

# 6658 Leffler Lane, Poages Mill Estates, Roanoke, Roanoke County, Virginia, United States, 24018

## 21 Floor 2 - Screened Porch



Dimensions: 26'0" x 9'5"  
Area: 245 sq. ft  
Counted as living area: No

Heated: No  
Finished: No  
Enclosed: No  
Contiguous: Yes  
Permitted: Yes  
Wet space: No  
Addition: No  
Conversion: No

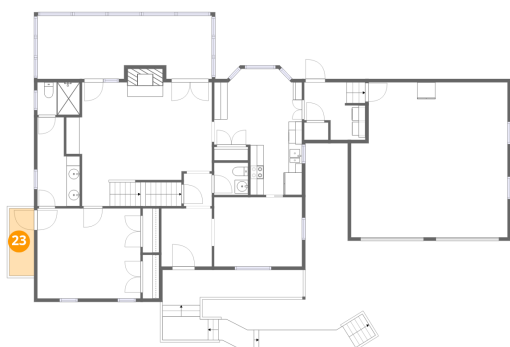
## 22 Floor 2 - Foyer



Dimensions: 7'6" x 8'8"  
Area: 65 sq. ft  
Counted as living area: Yes

Heated: Yes  
Finished: Yes  
Enclosed: Yes  
Contiguous: Yes  
Permitted: Yes  
Wet space: No  
Addition: No  
Conversion: No

## 23 Floor 2 - Balcony

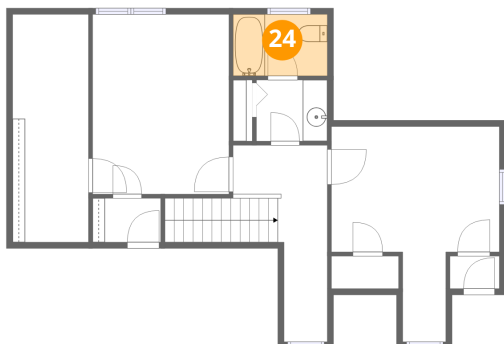


Dimensions: 3'8" x 10'1"  
Area: 37 sq. ft  
Counted as living area: No

Heated: No  
Finished: No  
Enclosed: No  
Contiguous: Yes  
Permitted: Yes  
Wet space: No  
Addition: No  
Conversion: No

6658 Leffler Lane, Poages Mill Estates, Roanoke, Roanoke County, Virginia, United States, 24018

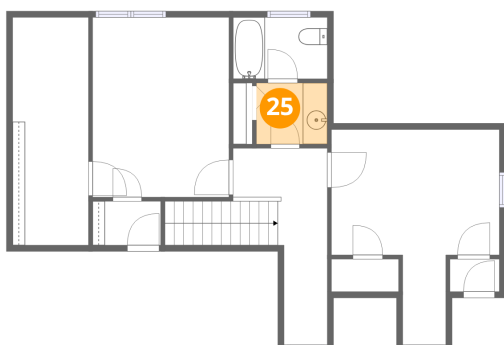
**24** Floor 3 - Bath



Dimensions: 7'8" x 5'0"  
Area: 38 sq. ft  
Counted as living area: Yes

Heated: Yes  
Finished: Yes  
Enclosed: Yes  
Contiguous: Yes  
Permitted: Yes  
Wet space: Yes  
Addition: No  
Conversion: No

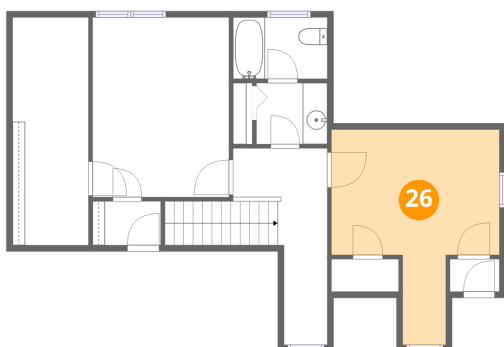
**25** Floor 3 - Bath



Dimensions: 5'9" x 5'0"  
Area: 28 sq. ft  
Counted as living area: Yes

Heated: Yes  
Finished: Yes  
Enclosed: Yes  
Contiguous: Yes  
Permitted: Yes  
Wet space: Yes  
Addition: No  
Conversion: No

**26** Floor 3 - Bedroom

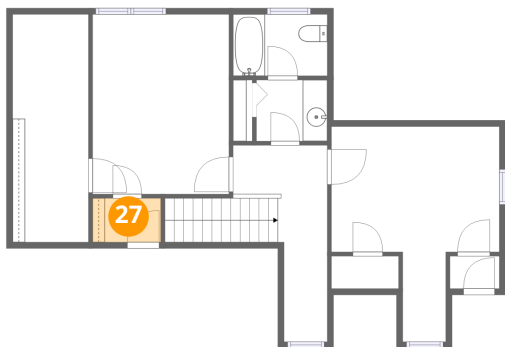


Dimensions: 13'8" x 17'5"  
Area: 238 sq. ft  
Counted as living area: Yes

Heated: Yes  
Finished: Yes  
Enclosed: Yes  
Contiguous: Yes  
Permitted: Yes  
Wet space: No  
Addition: No  
Conversion: No

6658 Leffler Lane, Poages Mill Estates, Roanoke, Roanoke County, Virginia, United States, 24018

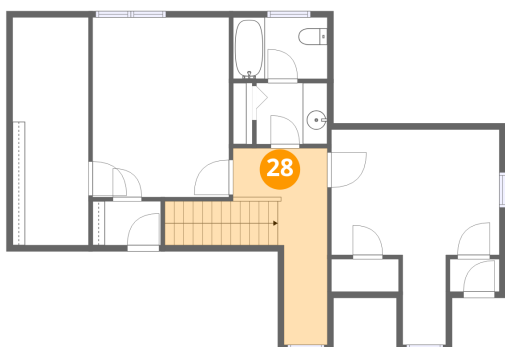
**27** Floor 3 - W.I.C.



Dimensions: 5'6" x 3'7"  
Area: 20 sq. ft  
Counted as living area: Yes

Heated: Yes  
Finished: Yes  
Enclosed: Yes  
Contiguous: Yes  
Permitted: Yes  
Wet space: No  
Addition: No  
Conversion: No

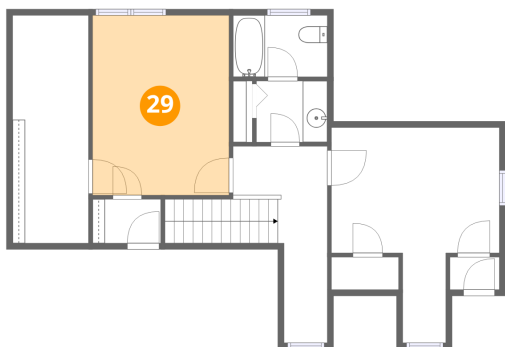
**28** Floor 3 - Hall



Dimensions: 7'8" x 15'11"  
Area: 122 sq. ft  
Counted as living area: Yes

Heated: Yes  
Finished: Yes  
Enclosed: Yes  
Contiguous: Yes  
Permitted: Yes  
Wet space: No  
Addition: No  
Conversion: No

**29** Floor 3 - Bedroom

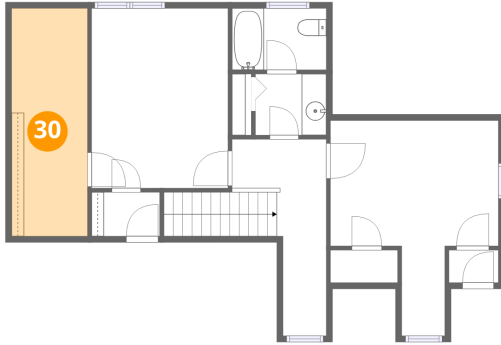


Dimensions: 11'1" x 14'7"  
Area: 161 sq. ft  
Counted as living area: Yes

Heated: Yes  
Finished: Yes  
Enclosed: Yes  
Contiguous: Yes  
Permitted: Yes  
Wet space: No  
Addition: No  
Conversion: No

6658 Leffler Lane, Poages Mill Estates, Roanoke, Roanoke  
County, Virginia, United States, 24018

**30** Floor 3 - W.I.C.



Dimensions: 6'1" x 18'5"  
Area: 112 sq. ft  
Counted as living area: Yes

Heated: Yes  
Finished: Yes  
Enclosed: Yes  
Contiguous: Yes  
Permitted: Yes  
Wet space: No  
Addition: No  
Conversion: No