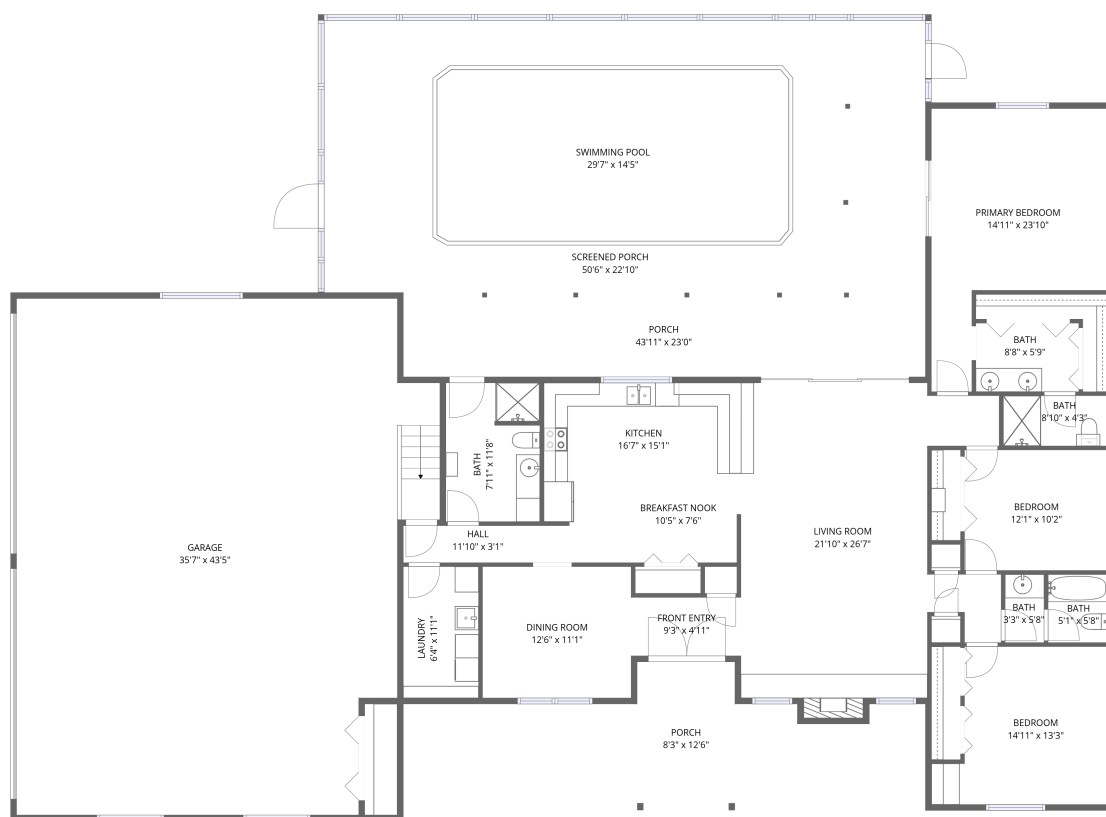


## Home data report

**10700 Luscombe Court, Hidden Lakes, New Port Richey, Pasco County, Florida, United States, 34654**



1st floor

**Total Area: 1975 sq. ft**

1st Floor: 1975 sq. ft

Excluded: Garage 1399 sq. ft, Undefined 26 sq. ft, Porch 529 sq. ft, Screened porch 616 sq. ft, Fireplace 10 sq. ft, Walls: 231 sq. ft

## Property summary



**1** Floors



**3** Bedrooms



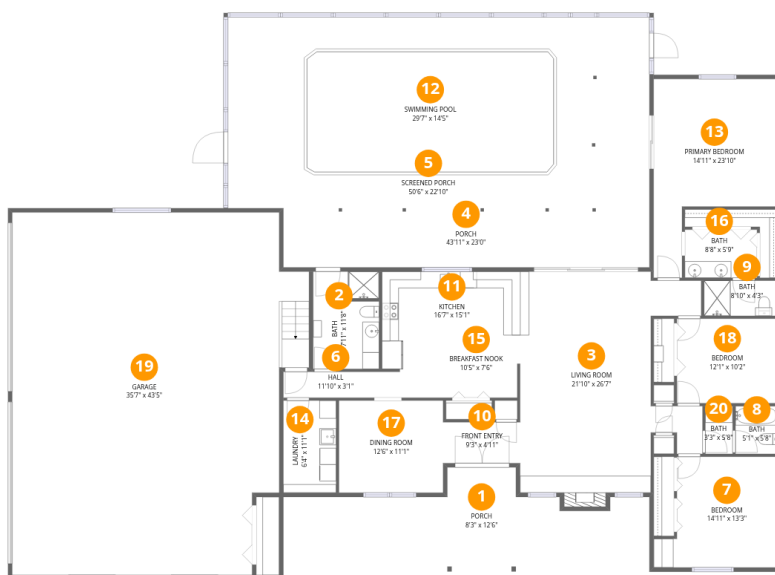
**3** Bathrooms



**1** Garages

Home data report

10700 Luscombe Court, Hidden Lakes, New Port Richey, Pasco County, Florida, United States, 34654



Room dimensions

Floor 1

Total:1975sqft Excluded: 2580sqft

#		Dimensions	sqft	Counted as living area
1	Porch	8'3" x 12'6"	103 sq. ft	No
2	Bath	7'11" x 11'8"	92 sq. ft	Yes
3	Living Room	21'10" x 26'7"	580 sq. ft	Yes
4	Porch	43'11" x 23'0"	1010 sq. ft	No
5	Screened Porch	50'6" x 22'10"	1153 sq. ft	No
6	Hall	11'10" x 3'1"	37 sq. ft	Yes
7	Bedroom	14'11" x 13'3"	198 sq. ft	Yes
8	Bath	5'1" x 5'8"	29 sq. ft	Yes
9	Bath	8'10" x 4'3"	37 sq. ft	Yes
10	Front Entry	9'3" x 4'11"	45 sq. ft	Yes
11	Kitchen	16'7" x 15'1"	250 sq. ft	Yes

Home data report

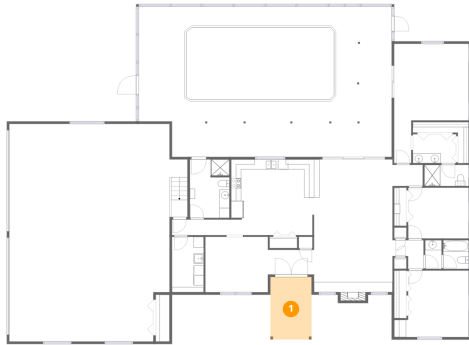
**10700 Luscombe Court, Hidden Lakes, New Port Richey, Pasco County, Florida, United States, 34654**

#		Dimensions	sqft	Counted as living area
12	Swimming Pool	29'7" x 14'5"	426 sq. ft	No
13	Primary Bedroom	14'11" x 23'10"	354 sq. ft	Yes
14	Laundry	6'4" x 11'1"	70 sq. ft	Yes
15	Breakfast Nook	10'5" x 7'6"	78 sq. ft	Yes
16	Bath	8'8" x 5'9"	50 sq. ft	Yes
17	Dining Room	12'6" x 11'1"	138 sq. ft	Yes
18	Bedroom	12'1" x 10'2"	123 sq. ft	Yes
19	Garage	35'7" x 43'5"	1546 sq. ft	No
20	Bath	3'3" x 5'8"	19 sq. ft	Yes

10700 Luscombe Court, Hidden Lakes, New Port Richey, Pasco County, Florida, United States, 34654

**1** Floor 1 - Porch

---



Dimensions: 8'3" x 12'6"  
Area: 103 sq. ft  
Counted as living area: No

Heated: No  
Finished: No  
Enclosed: No  
Contiguous: Yes  
Permitted: Yes  
Wet space: No  
Addition: No  
Conversion: No

**2** Floor 1 - Bath

---

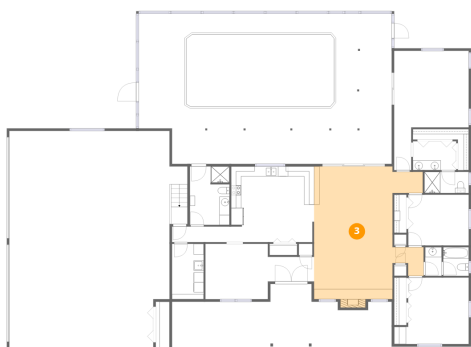


Dimensions: 7'11" x 11'8"  
Area: 92 sq. ft  
Counted as living area: Yes

Heated: Yes  
Finished: Yes  
Enclosed: Yes  
Contiguous: Yes  
Permitted: Yes  
Wet space: Yes  
Addition: No  
Conversion: No

10700 Luscombe Court, Hidden Lakes, New Port Richey, Pasco County, Florida, United States, 34654

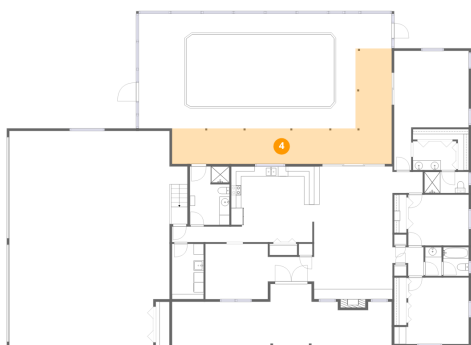
**3** Floor 1 - Living Room



Dimensions: 21'10" x 26'7"  
Area: 580 sq. ft  
Counted as living area: Yes

Heated: Yes  
Finished: Yes  
Enclosed: Yes  
Contiguous: Yes  
Permitted: Yes  
Wet space: No  
Addition: No  
Conversion: No

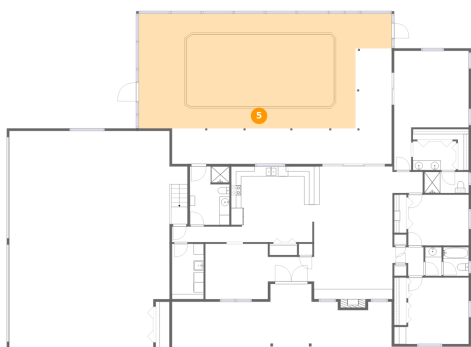
**4** Floor 1 - Porch



Dimensions: 43'11" x 23'0"  
Area: 1010 sq. ft  
Counted as living area: No

Heated: No  
Finished: No  
Enclosed: No  
Contiguous: Yes  
Permitted: Yes  
Wet space: No  
Addition: No  
Conversion: No

**5** Floor 1 - Screened Porch

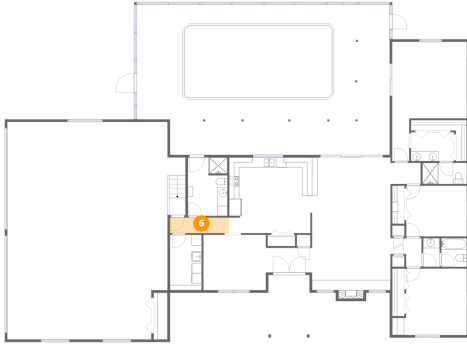


Dimensions: 50'6" x 22'10"  
Area: 1153 sq. ft  
Counted as living area: No

Heated: No  
Finished: No  
Enclosed: No  
Contiguous: Yes  
Permitted: Yes  
Wet space: No  
Addition: No  
Conversion: No

10700 Luscombe Court, Hidden Lakes, New Port Richey, Pasco County, Florida, United States, 34654

**6** Floor 1 - Hall



Dimensions: 11'10" x 3'1"  
Area: 37 sq. ft  
Counted as living area: Yes

Heated: Yes  
Finished: Yes  
Enclosed: Yes  
Contiguous: Yes  
Permitted: Yes  
Wet space: No  
Addition: No  
Conversion: No

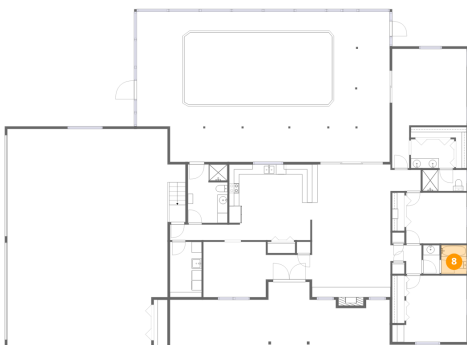
**7** Floor 1 - Bedroom



Dimensions: 14'11" x 13'3"  
Area: 198 sq. ft  
Counted as living area: Yes

Heated: Yes  
Finished: Yes  
Enclosed: Yes  
Contiguous: Yes  
Permitted: Yes  
Wet space: No  
Addition: No  
Conversion: No

**8** Floor 1 - Bath

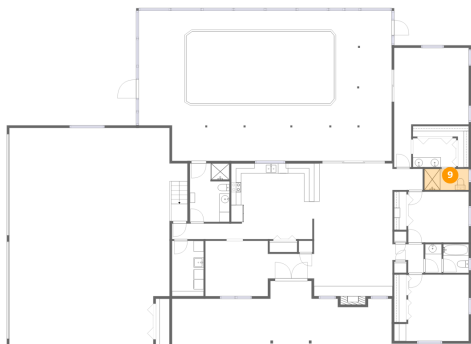


Dimensions: 5'1" x 5'8"  
Area: 29 sq. ft  
Counted as living area: Yes

Heated: Yes  
Finished: Yes  
Enclosed: Yes  
Contiguous: Yes  
Permitted: Yes  
Wet space: Yes  
Addition: No  
Conversion: No

# 10700 Luscombe Court, Hidden Lakes, New Port Richey, Pasco County, Florida, United States, 34654

## 9 Floor 1 - Bath



Dimensions: 8'10" x 4'3"  
Area: 37 sq. ft  
Counted as living area: Yes

Heated: Yes  
Finished: Yes  
Enclosed: Yes  
Contiguous: Yes  
Permitted: Yes  
Wet space: Yes  
Addition: No  
Conversion: No

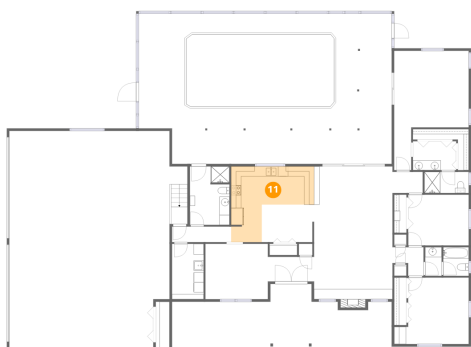
## 10 Floor 1 - Front Entry



Dimensions: 9'3" x 4'11"  
Area: 45 sq. ft  
Counted as living area: Yes

Heated: Yes  
Finished: Yes  
Enclosed: Yes  
Contiguous: Yes  
Permitted: Yes  
Wet space: No  
Addition: No  
Conversion: No

## 11 Floor 1 - Kitchen

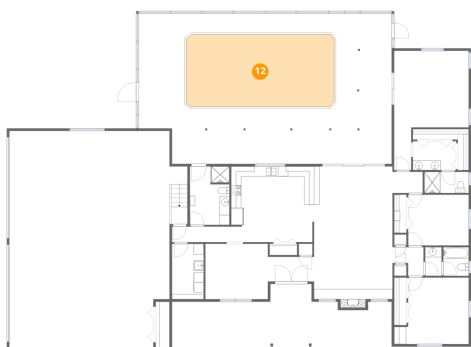


Dimensions: 16'7" x 15'1"  
Area: 250 sq. ft  
Counted as living area: Yes

Heated: Yes  
Finished: Yes  
Enclosed: Yes  
Contiguous: Yes  
Permitted: Yes  
Wet space: No  
Addition: No  
Conversion: No

# 10700 Luscombe Court, Hidden Lakes, New Port Richey, Pasco County, Florida, United States, 34654

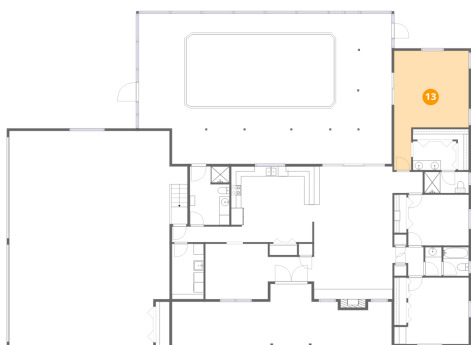
## 12 Floor 1 - Swimming Pool



Dimensions: 29'7" x 14'5"  
Area: 426 sq. ft  
Counted as living area: No

Heated: No  
Finished: No  
Enclosed: No  
Contiguous: Yes  
Permitted: No  
Wet space: No  
Addition: No  
Conversion: No

## 13 Floor 1 - Primary Bedroom



Dimensions: 14'11" x 23'10"  
Area: 354 sq. ft  
Counted as living area: Yes

Heated: Yes  
Finished: Yes  
Enclosed: Yes  
Contiguous: Yes  
Permitted: Yes  
Wet space: No  
Addition: No  
Conversion: No

## 14 Floor 1 - Laundry



Dimensions: 6'4" x 11'1"  
Area: 70 sq. ft  
Counted as living area: Yes

Heated: Yes  
Finished: Yes  
Enclosed: Yes  
Contiguous: Yes  
Permitted: Yes  
Wet space: No  
Addition: No  
Conversion: No

# 10700 Luscombe Court, Hidden Lakes, New Port Richey, Pasco County, Florida, United States, 34654

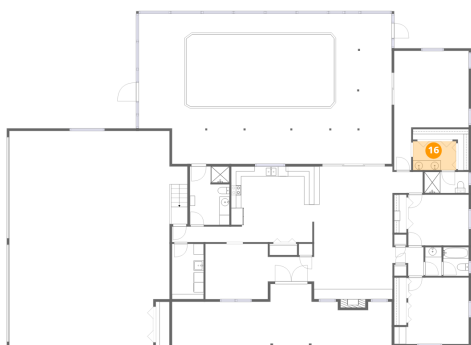
## 15 Floor 1 - Breakfast Nook



Dimensions: 10'5" x 7'6"  
Area: 78 sq. ft  
Counted as living area: Yes

Heated: Yes  
Finished: Yes  
Enclosed: Yes  
Contiguous: Yes  
Permitted: Yes  
Wet space: No  
Addition: No  
Conversion: No

## 16 Floor 1 - Bath



Dimensions: 8'8" x 5'9"  
Area: 50 sq. ft  
Counted as living area: Yes

Heated: Yes  
Finished: Yes  
Enclosed: Yes  
Contiguous: Yes  
Permitted: Yes  
Wet space: Yes  
Addition: No  
Conversion: No

## 17 Floor 1 - Dining Room



Dimensions: 12'6" x 11'1"  
Area: 138 sq. ft  
Counted as living area: Yes

Heated: Yes  
Finished: Yes  
Enclosed: Yes  
Contiguous: Yes  
Permitted: Yes  
Wet space: No  
Addition: No  
Conversion: No

10700 Luscombe Court, Hidden Lakes, New Port Richey, Pasco County, Florida, United States, 34654

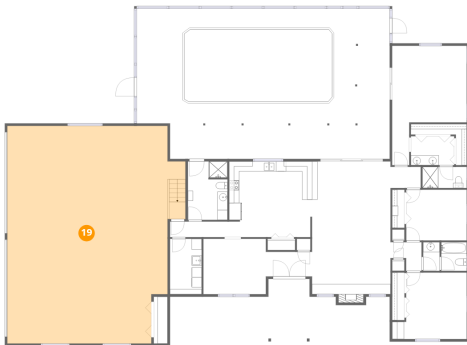
**18** Floor 1 - Bedroom



Dimensions: 12'1" x 10'2"  
Area: 123 sq. ft  
Counted as living area: Yes

Heated: Yes  
Finished: Yes  
Enclosed: Yes  
Contiguous: Yes  
Permitted: Yes  
Wet space: No  
Addition: No  
Conversion: No

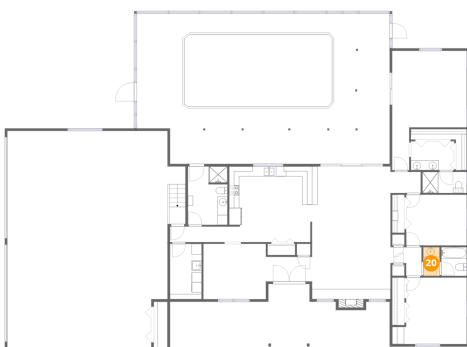
**19** Floor 1 - Garage



Dimensions: 35'7" x 43'5"  
Area: 1546 sq. ft  
Counted as living area: No

Heated: No  
Finished: No  
Enclosed: Yes  
Contiguous: Yes  
Permitted: Yes  
Wet space: No  
Addition: No  
Conversion: No

**20** Floor 1 - Bath



Dimensions: 3'3" x 5'8"  
Area: 19 sq. ft  
Counted as living area: Yes

Heated: Yes  
Finished: Yes  
Enclosed: Yes  
Contiguous: Yes  
Permitted: Yes  
Wet space: Yes  
Addition: No  
Conversion: No