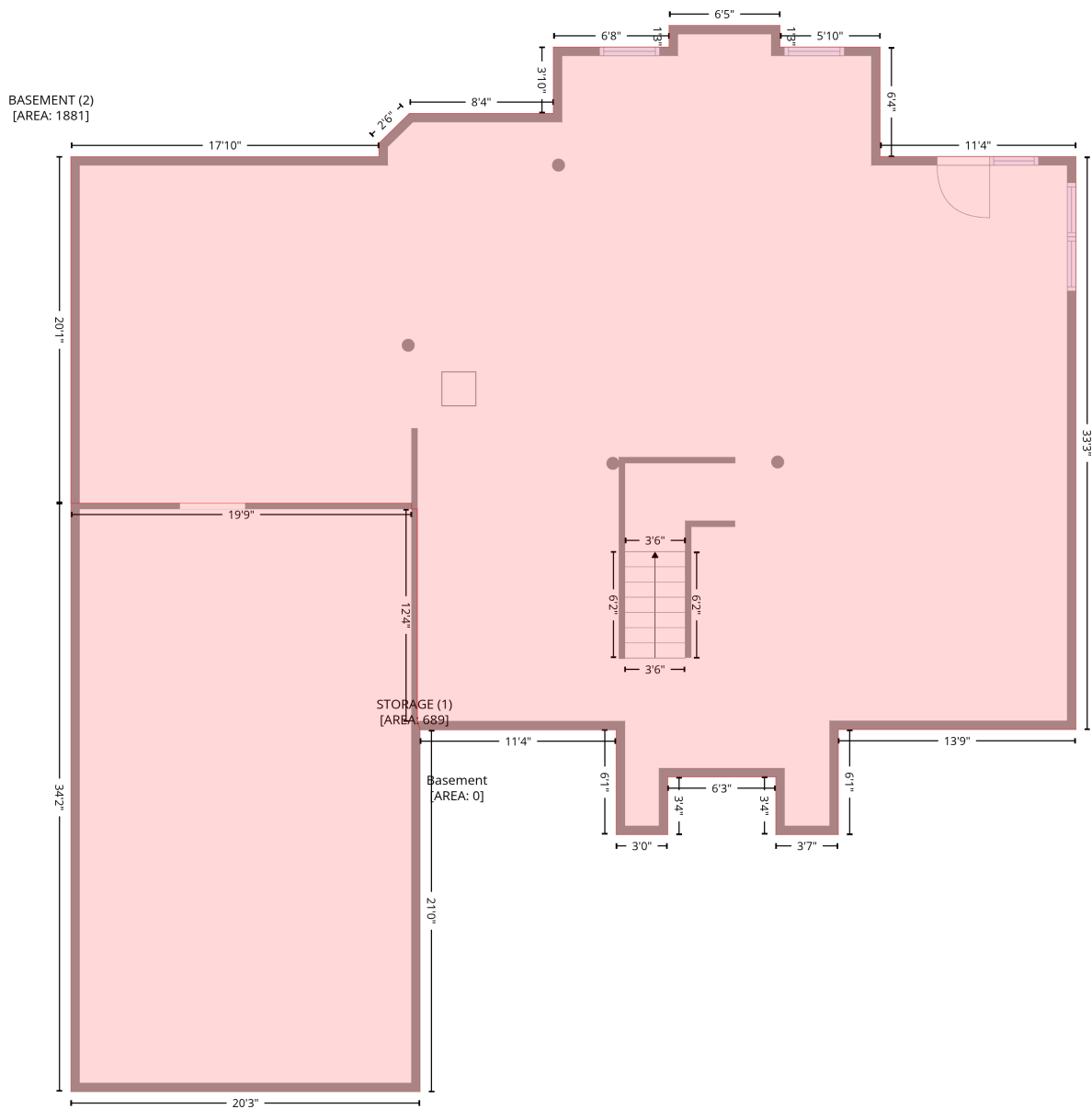


# 6 Bridle Cove, Alexandria, Campbell County, Kentucky, United States, 41001

Gross Living Area: 4078 sq. ft

## Level 1 - Below Grade



Space	Area (sq. ft)	Calculation
STORAGE (Non-living area)	689	Coordinate Polygon Area Algorithm using inches $-((265.2 + 259.3) * (503.9 - 497.9) + (259.3 + 259.2) * (497.9 - 497.9) + (259.2 + 265.2) * (497.9 - 503.9)) * 0.5 * 0.00694 + -((265.2 + 265.2) * (503.9 - 755.7) + (265.2 + 22.4) * (755.7 - 755.7) + (22.4 + 22.4) * (755.7 - 346.1) + (22.4 + 259.3) * (346.1 - 346.1) + (259.3 + 259.3) * (346.1 - 350.1) + (259.3 + 263.3) * (350.1 - 350.1) + (263.3 + 263.3) * (350.1 - 497.9) + (263.3 + 265.2) * (497.9 - 503.9)) * 0.5 * 0.00694$

# 6 Bridle Cove, Alexandria, Campbell County, Kentucky, United States, 41001

Gross Living Area: 4078 sq. ft

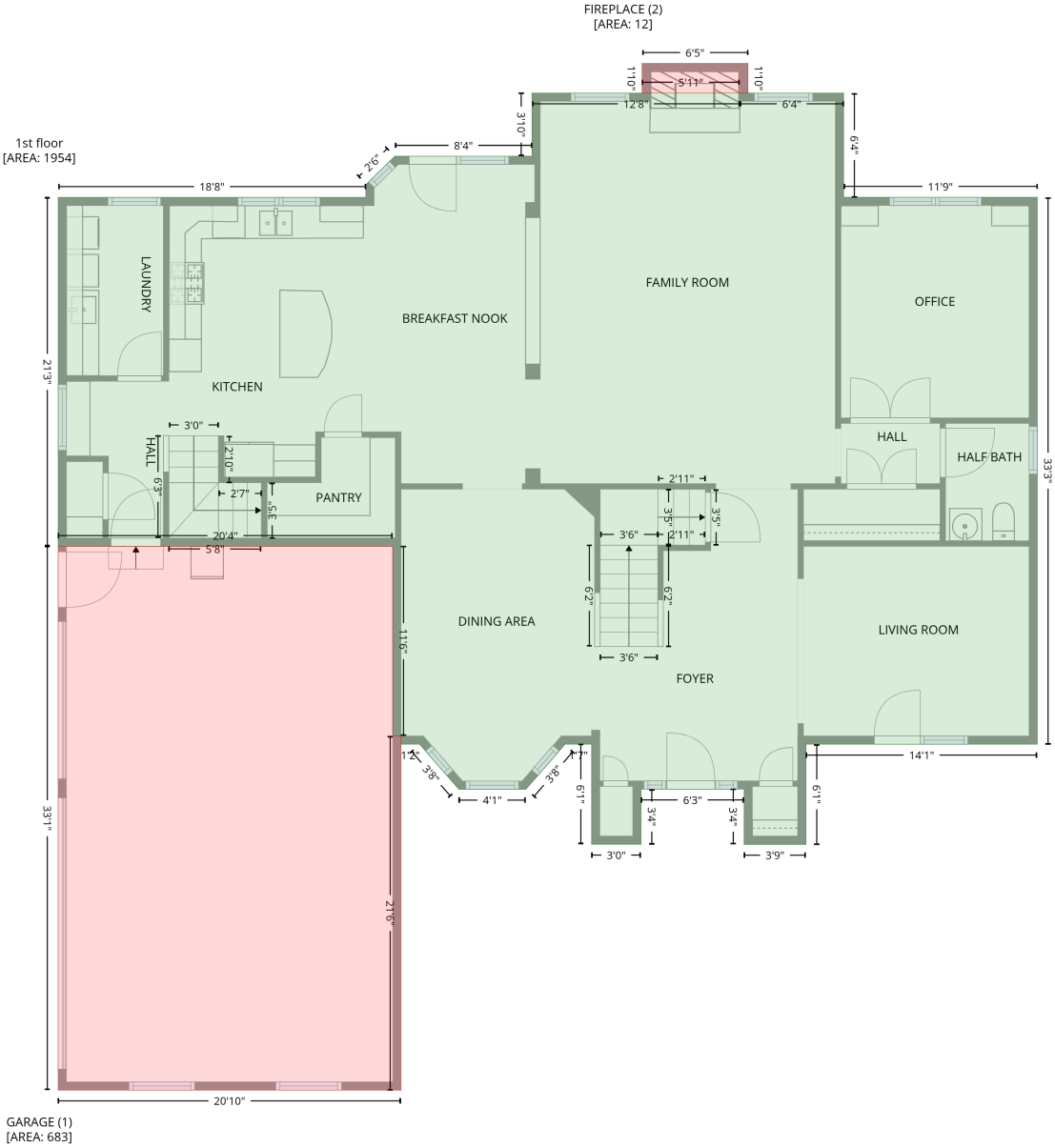
## Level 1 - Below Grade

Space	Area (sq. ft)	Calculation <small>Coordinate Polygon Area Algorithm using inches</small>
BASEMENT (Non-living area)	1881	$\begin{aligned} & -((515.3 + 515.3) * (13.5 - 28.6) + (515.3 + 584.9) * (28.6 - 28.6) + (584.9 + 584.9) * (28.6 - \\ & 104.8) + (584.9 + 721) * (104.8 - 104.8) + (721 + 721) * (104.8 - 503.6) + (721 + 555.9) * (503.6 - \\ & 503.6) + (555.9 + 555.9) * (503.6 - 576.8) + (555.9 + 512.4) * (576.8 - 576.8) + (512.4 + 512.4) * \\ & (576.8 - 536.6) + (512.4 + 437.3) * (536.6 - 536.6) + (437.3 + 437.3) * (536.6 - 576.8) + (437.3 + \\ & 401.5) * (576.8 - 576.8) + (401.5 + 401.5) * (576.8 - 503.9) + (401.5 + 265.2) * (503.9 - 503.9) + \\ & (265.2 + 263.3) * (503.9 - 497.9) + (263.3 + 263.3) * (497.9 - 350.1) + (263.3 + 259.3) * (350.1 - \\ & 350.1) + (259.3 + 259.3) * (350.1 - 346.1) + (259.3 + 22.4) * (346.1 - 346.1) + (22.4 + 22.4) * \\ & (346.1 - 104.9) + (22.4 + 236.6) * (104.9 - 104.9) + (236.6 + 236.6) * (104.9 - 95.5) + (236.6 + \\ & 257.7) * (95.5 - 74.8) + (257.7 + 357.8) * (74.8 - 74.8) + (357.8 + 357.8) * (74.8 - 28.6) + (357.8 + \\ & 438.2) * (28.6 - 28.6) + (438.2 + 438.2) * (28.6 - 13.5) + (438.2 + 515.3) * (13.5 - 13.5)) * 0.5 * \\ & 0.00694 \end{aligned}$

# 6 Bridle Cove, Alexandria, Campbell County, Kentucky, United States, 41001

Gross Living Area: 4078 sq. ft

## Level 2



# 6 Bridle Cove, Alexandria, Campbell County, Kentucky, United States, 41001

Gross Living Area: 4078 sq. ft

## Level 2

Space	Area (sq. ft)	Calculation <small>Coordinate Polygon Area Algorithm using inches</small>
1st floor (Living area)	1954	$-\left((509.3 + 585.1) * (28.6 - 28.6) + (585.1 + 585.1) * (28.6 - 104.7) + (585.1 + 726.4) * (104.7 - 104.7) + (726.4 + 726.4) * (104.7 - 503.9) + (726.4 + 557.6) * (503.9 - 503.9) + (557.6 + 557.6) * (503.9 - 577) + (557.6 + 512.5) * (577 - 577) + (512.5 + 512.5) * (577 - 536.6) + (512.5 + 437.3) * (536.6 - 536.6) + (437.3 + 437.3) * (536.6 - 576.8) + (437.3 + 401.3) * (576.8 - 576.8) + (401.3 + 401.3) * (576.8 - 503.9) + (401.3 + 381.9) * (503.9 - 503.9) + (381.9 + 353.3) * (503.9 - 536.8) + (353.3 + 304.4) * (536.8 - 536.8) + (304.4 + 275.8) * (536.8 - 503.9) + (275.8 + 262.2) * (503.9 - 503.9) + (262.2 + 262.2) * (503.9 - 497.9) + (262.2 + 256.2) * (497.9 - 497.9) + (256.2 + 256.2) * (497.9 - 359.4) + (256.2 + 12.1) * (359.4 - 359.4) + (12.1 + 12.1) * (359.4 - 104.8) + (12.1 + 236.6) * (104.8 - 104.8) + (236.6 + 236.6) * (104.8 - 95.5) + (236.6 + 257.8) * (95.5 - 74.7) + (257.8 + 357.8) * (74.7 - 74.7) + (357.8 + 357.8) * (74.7 - 28.6) + (357.8 + 509.3) * (28.6 - 28.6) + (509.3 + 509.3) * (28.6 - 28.6)\right) * 0.5 * 0.00694$
GARAGE (Non-living area)	683	$-\left((256.2 + 256.2) * (359.4 - 497.9) + (256.2 + 262.2) * (497.9 - 497.9) + (262.2 + 262.2) * (497.9 - 756.3) + (262.2 + 12.1) * (756.3 - 756.3) + (12.1 + 12.1) * (756.3 - 359.4) + (12.1 + 256.2) * (359.4 - 359.4)\right) * 0.5 * 0.00694$
FIREPLACE (Non-living area)	12	$-\left((515.3 + 515.3) * (7 - 28.6) + (515.3 + 509.3) * (28.6 - 28.6) + (509.3 + 438.1) * (28.6 - 28.6) + (438.1 + 438.1) * (28.6 - 7) + (438.1 + 515.3) * (7 - 7)\right) * 0.5 * 0.00694$

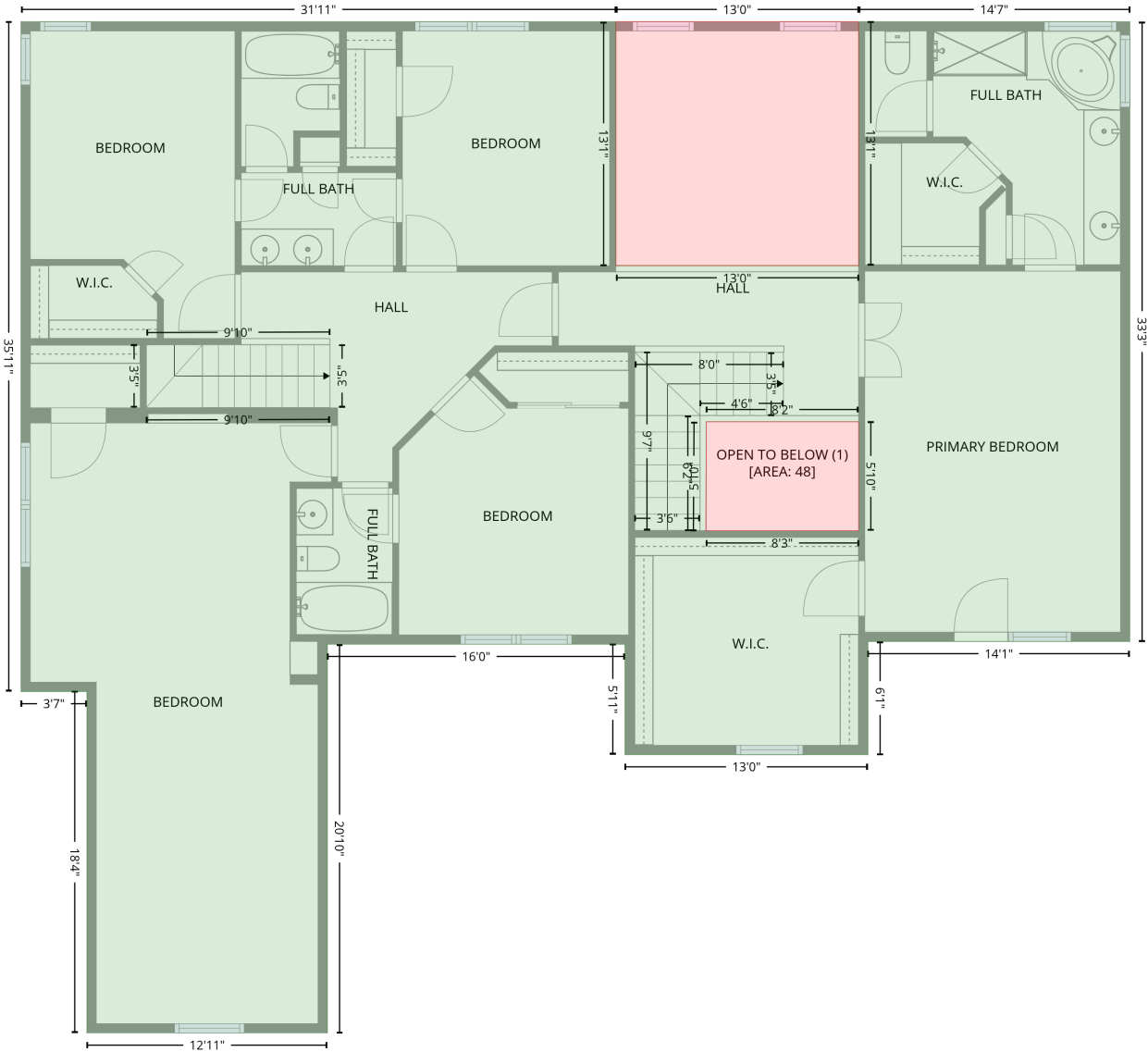
# 6 Bridle Cove, Alexandria, Campbell County, Kentucky, United States, 41001

Gross Living Area: 4078 sq. ft

## Level 3

2nd floor  
[AREA: 2124]

OPEN TO BELOW (2)  
[AREA: 171]



### Space

Area (sq. ft)

### Calculation

Coordinate Polygon Area Algorithm using inches

2nd floor  
(Living area)

2124

$$\begin{aligned}
 & -((395.3 + 395.3) * (104.9 - 262) + (395.3 + 551.6) * (262 - 262) + (551.6 + 551.6) * (262 - 104.9) \\
 & + (551.6 + 726.4) * (104.9 - 104.9) + (726.4 + 726.4) * (104.9 - 504.1) + (726.4 + 557.6) * (504.1 - \\
 & 504.1) + (557.6 + 557.6) * (504.1 - 577) + (557.6 + 401.2) * (577 - 577) + (401.2 + 401.2) * (577 - \\
 & 505.9) + (401.2 + 209.4) * (505.9 - 505.9) + (209.4 + 209.4) * (505.9 - 756.3) + (209.4 + 54.6) * \\
 & (756.3 - 756.3) + (54.6 + 54.6) * (756.3 - 536.3) + (54.6 + 12.1) * (536.3 - 536.3) + (12.1 + 12.1) * \\
 & (536.3 - 104.9) + (12.1 + 395.3) * (104.9 - 104.9)) * 0.5 * 0.00694 + -((551.6 + 453.5) * (362.6 - \\
 & 362.6) + (453.5 + 453.1) * (362.6 - 432.8) + (453.1 + 551.6) * (432.8 - 432.8) + (551.6 + 551.6) * \\
 & (432.8 - 362.6)) * 0.5 * 0.00694
 \end{aligned}$$

# 6 Bridle Cove, Alexandria, Campbell County, Kentucky, United States, 41001

Gross Living Area: 4078 sq. ft

## Level 3

Space	Area (sq. ft)	Calculation <small>Coordinate Polygon Area Algorithm using inches</small>
OPEN TO BELOW (Non-living area)	48	$-\left((551.6 + 551.6) * (362.6 - 432.8) + (551.6 + 453.1) * (432.8 - 432.8) + (453.1 + 453.5) * (432.8 - 362.6) + (453.5 + 551.6) * (362.6 - 362.6)\right) * 0.5 * 0.00694$
OPEN TO BELOW (Non-living area)	171	$-\left((551.6 + 551.6) * (104.9 - 262) + (551.6 + 395.3) * (262 - 262) + (395.3 + 395.3) * (262 - 104.9) + (395.3 + 551.6) * (104.9 - 104.9)\right) * 0.5 * 0.00694$