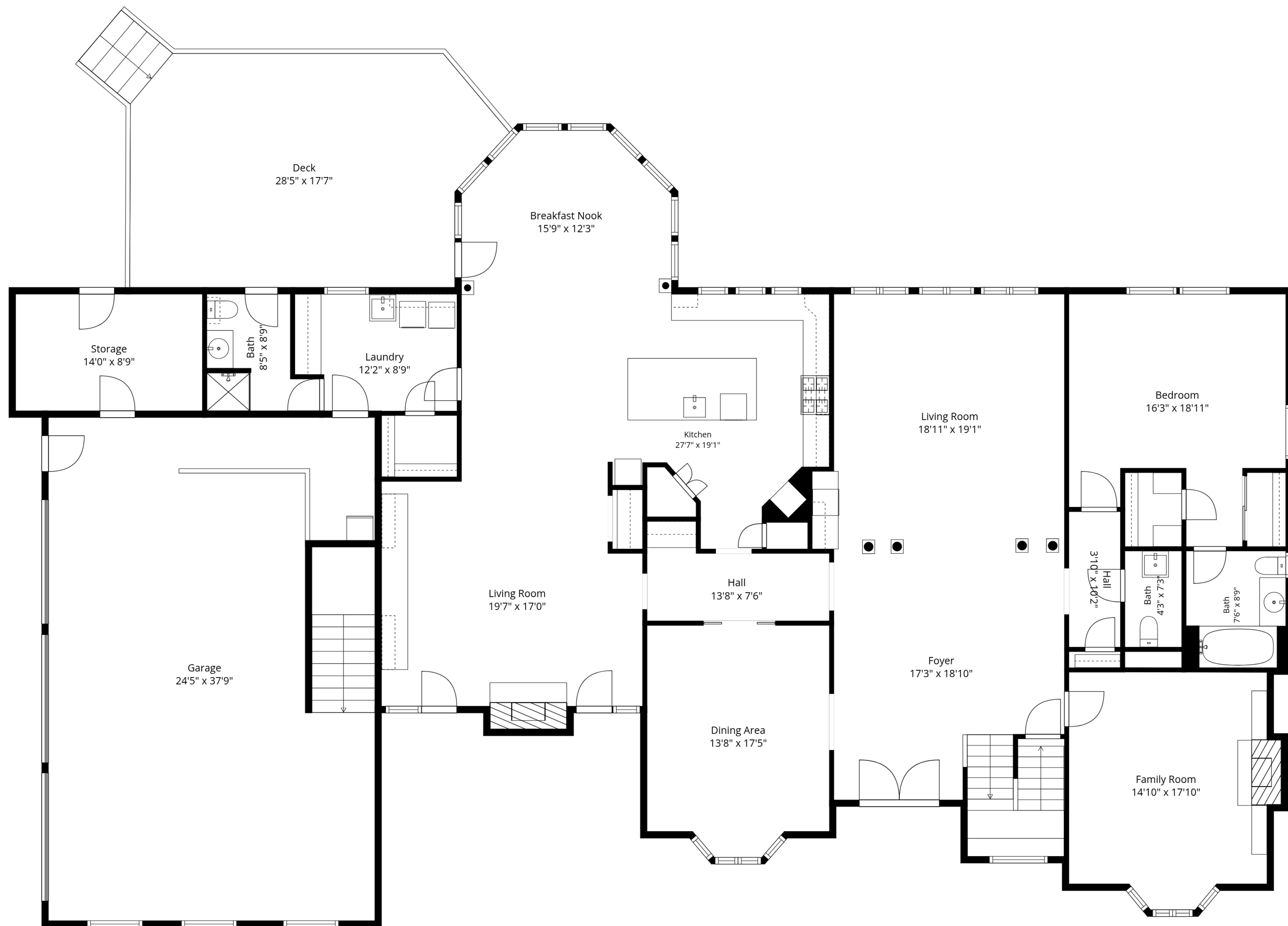


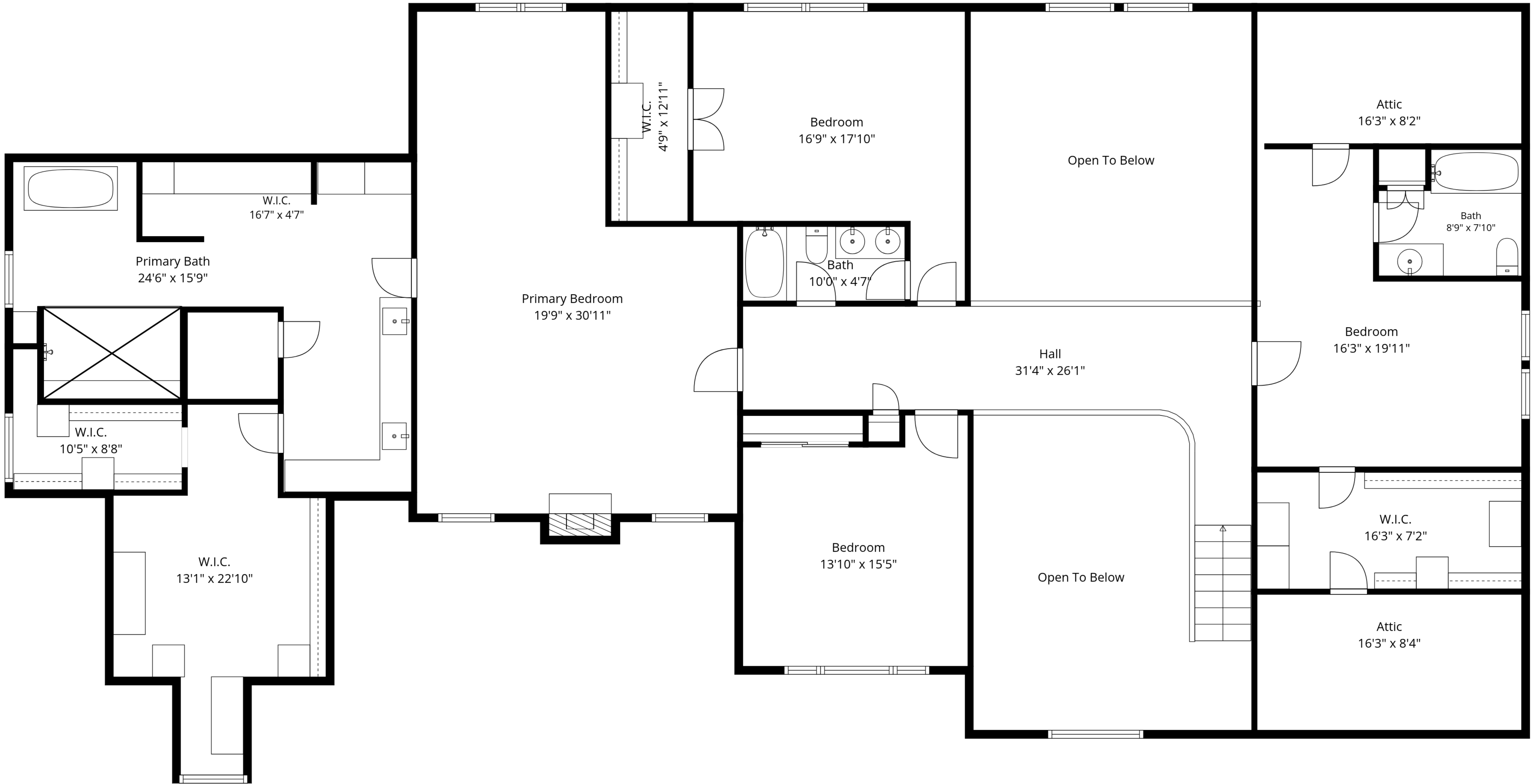
TOTAL: 7530 sq. ft

Basement: 2134 sq. ft, 1st floor: 2893 sq. ft, 3RD FLOOR: 2503 sq. ft
 EXCLUDED AREAS: STORAGE: 536 sq. ft, UTILITY: 75 sq. ft, WINE CELLAR: 110 sq. ft,
 GARAGE: 914 sq. ft, DECK: 465 sq. ft, FIREPLACE: 19 sq. ft,
 OPEN TO BELOW: 573 sq. ft, ATTIC: 144 sq. ft, LOW CEILING: 139 sq. ft,
 WALLS: 488 sq. ft



TOTAL: 7530 sq. ft

Basement: 2134 sq. ft, 1st floor: 2893 sq. ft, 3RD FLOOR: 2503 sq. ft
 EXCLUDED AREAS: STORAGE: 536 sq. ft, UTILITY: 75 sq. ft, WINE CELLAR: 110 sq. ft,
 GARAGE: 914 sq. ft, DECK: 465 sq. ft, FIREPLACE: 19 sq. ft,
 OPEN TO BELOW: 573 sq. ft, ATTIC: 144 sq. ft, LOW CEILING: 139 sq. ft,
 WALLS: 488 sq. ft

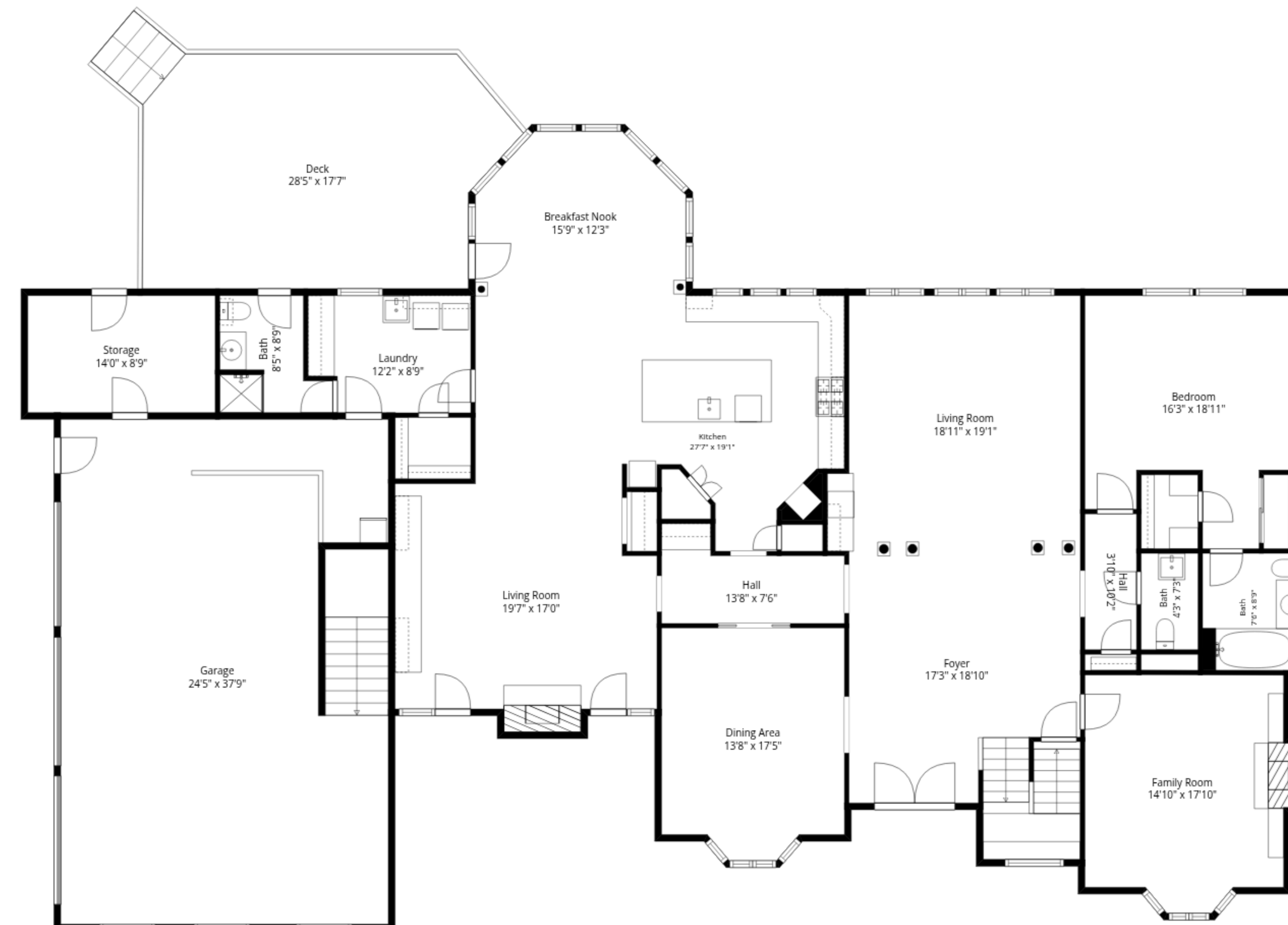


TOTAL: 7530 sq. ft

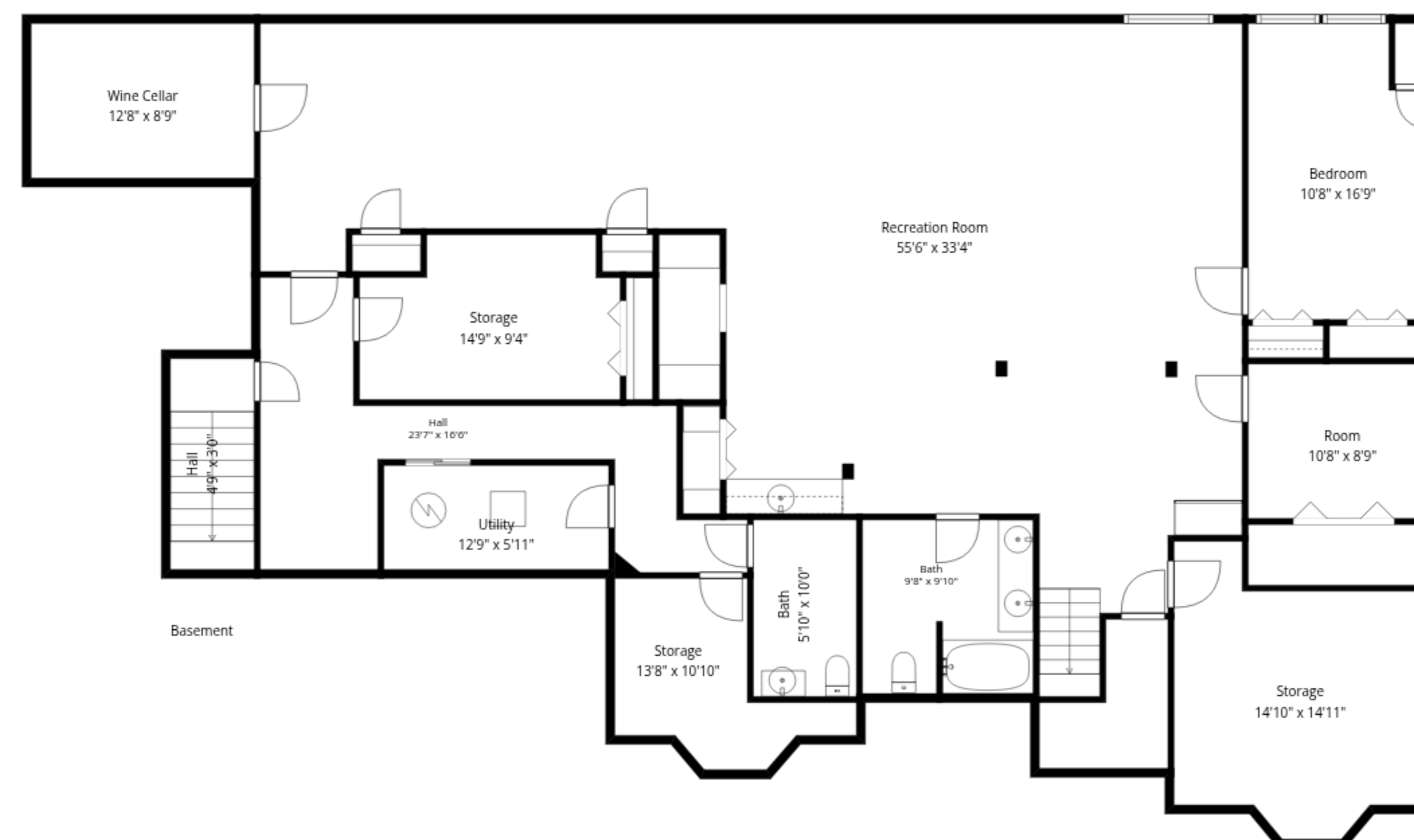
Basement: 2134 sq. ft, 1st floor: 2893 sq. ft, 3RD FLOOR: 2503 sq. ft
 EXCLUDED AREAS: STORAGE: 536 sq. ft, UTILITY: 75 sq. ft, WINE CELLAR: 110 sq. ft,
 GARAGE: 914 sq. ft, DECK: 465 sq. ft, FIREPLACE: 19 sq. ft,
 OPEN TO BELOW: 573 sq. ft, ATTIC: 144 sq. ft, LOW CEILING: 139 sq. ft,
 WALLS: 488 sq. ft



3rd Floor



1st Floor



Basement

TOTAL: 7530 sq. ft

Basement: 2134 sq. ft, 1st floor: 2893 sq. ft, 3RD FLOOR: 2503 sq. ft
 EXCLUDED AREAS: STORAGE: 536 sq. ft, UTILITY: 75 sq. ft, WINE CELLAR: 110 sq. ft,
 GARAGE: 914 sq. ft, DECK: 465 sq. ft, FIREPLACE: 19 sq. ft,
 OPEN TO BELOW: 573 sq. ft, ATTIC: 144 sq. ft, LOW CEILING: 139 sq. ft,
 WALLS: 488 sq. ft