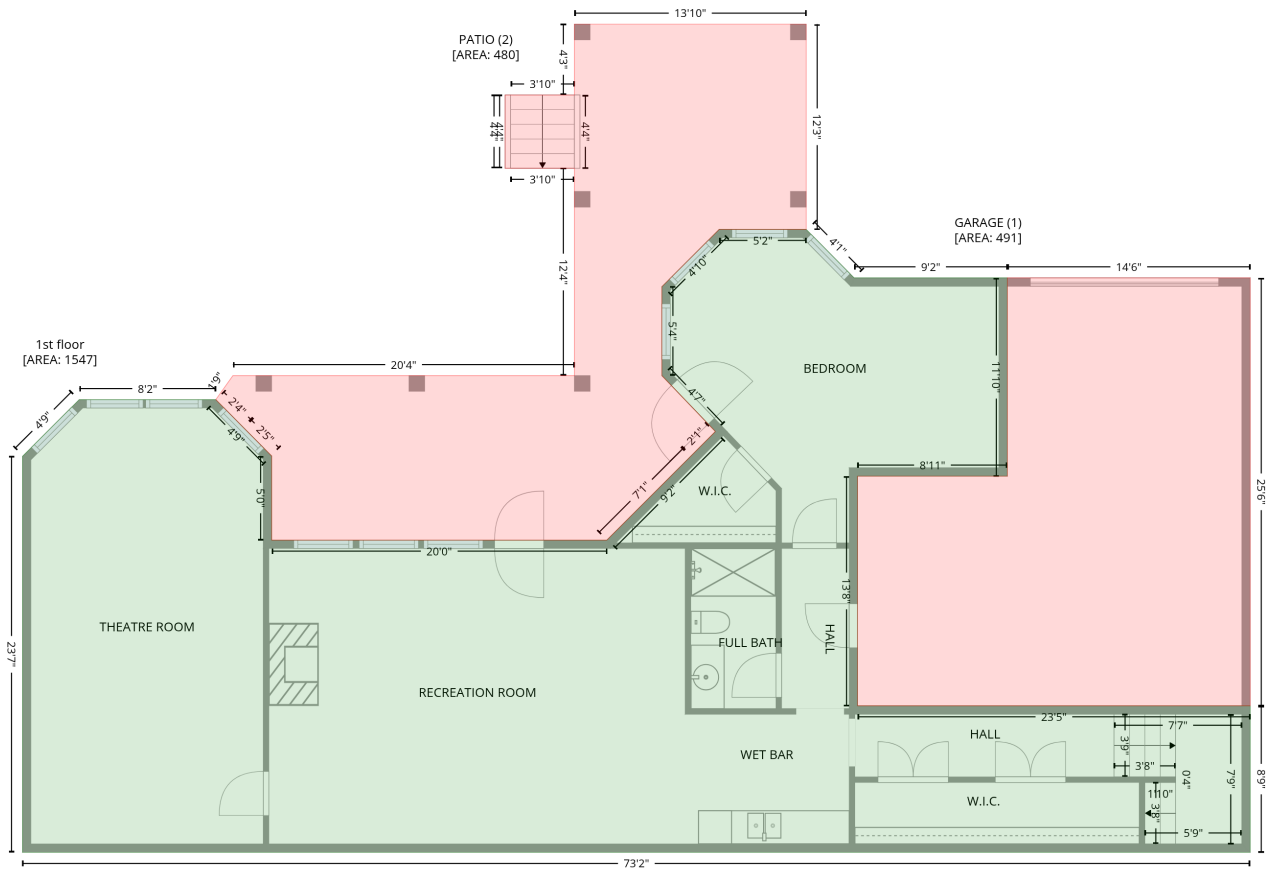


540 Vista del Lago Lane, Wake Forest, Wake County, North Carolina, United States, 27587

Gross Living Area: 6984 sq. ft

Level 1

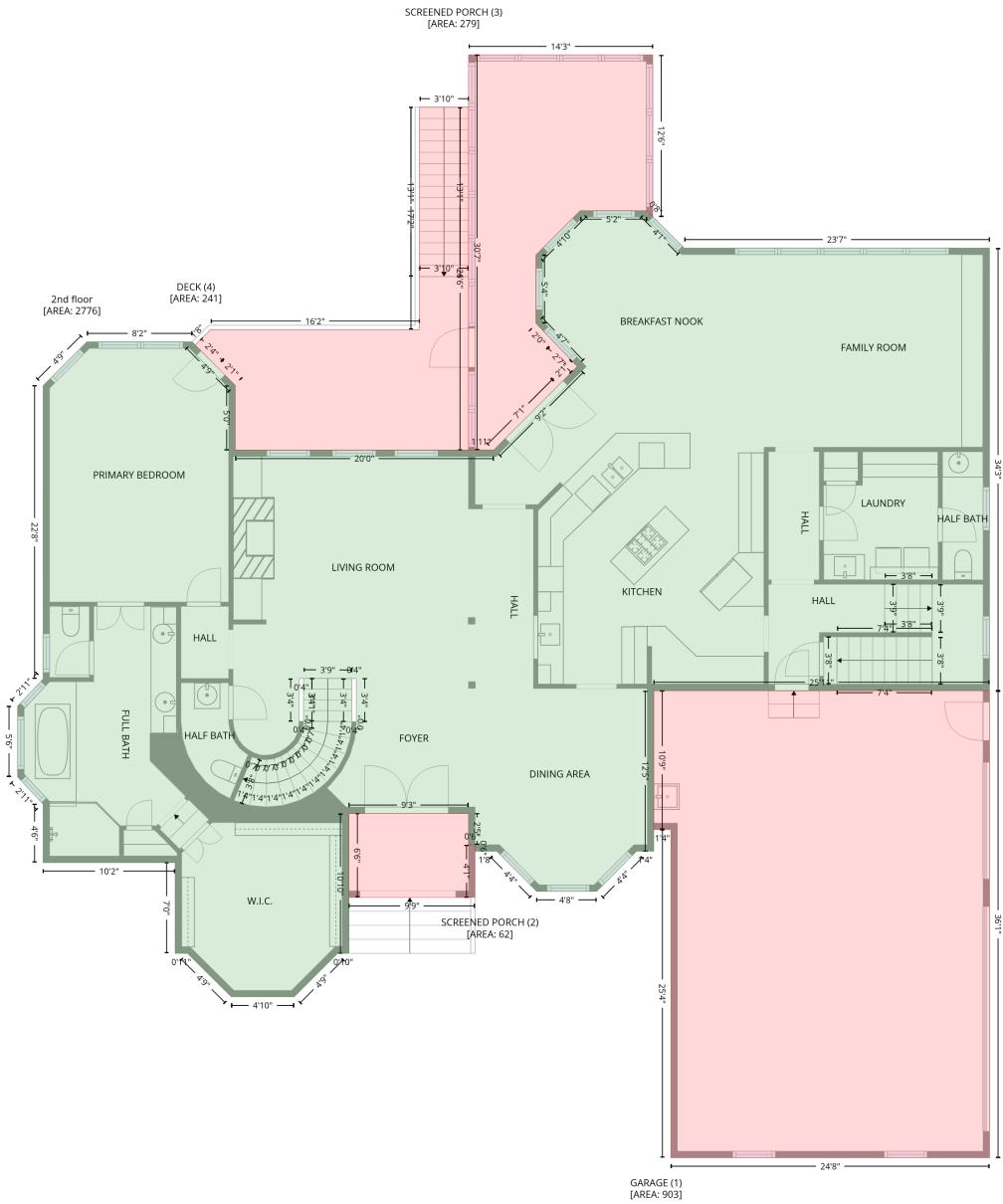


Space	Area (sq. ft)	Calculation
1st floor (Living area)	1547	$-\left((593.2 + 627.5) * (144.9 - 179.5) + (627.5 + 737) * (179.5 - 179.5) + (737 + 737) * (179.5 - 321.2) + (737 + 630) * (321.2 - 321.2) + (630 + 630) * (321.2 - 485.4) + (630 + 910.6) * (485.4 - 485.4) + (910.6 + 910.6) * (485.4 - 590.1) + (910.6 + 33) * (590.1 - 590.1) + (33 + 33) * (590.1 - 307.1) + (33 + 73.5) * (307.1 - 266.5) + (73.5 + 171.2) * (266.5 - 266.5) + (171.2 + 211.1) * (266.5 - 306.8) + (211.1 + 211.1) * (306.8 - 366.9) + (211.1 + 450.7) * (366.9 - 366.9) + (450.7 + 528.3) * (366.9 - 289.3) + (528.3 + 490.1) * (289.3 - 249.4) + (490.1 + 490.1) * (249.4 - 185.8) + (490.1 + 531) * (185.8 - 144.9) + (531 + 593.2) * (144.9 - 144.9)\right) * 0.5 * 0.00694$
GARAGE (Non-living area)	491	$-\left((910.6 + 910.6) * (179.5 - 485.4) + (910.6 + 630) * (485.4 - 485.4) + (630 + 630) * (485.4 - 321.2) + (630 + 737) * (321.2 - 321.2) + (737 + 737) * (321.2 - 179.5) + (737 + 910.6) * (179.5 - 179.5)\right) * 0.5 * 0.00694$
PATIO (Non-living area)	480	$-\left((593.2 + 593.2) * (-1.8 - 144.9) + (593.2 + 531) * (144.9 - 144.9) + (531 + 490.1) * (144.9 - 185.8) + (490.1 + 490.1) * (185.8 - 249.4) + (490.1 + 528.3) * (249.4 - 289.3) + (528.3 + 510.9) * (289.3 - 306.8) + (510.9 + 450.7) * (306.8 - 366.9) + (450.7 + 211.1) * (366.9 - 366.9) + (211.1 + 211.1) * (366.9 - 306.8) + (211.1 + 190.9) * (306.8 - 286.6) + (190.9 + 171.2) * (286.6 - 266.5) + (171.2 + 183.4) * (266.5 - 249.4) + (183.4 + 427.5) * (249.4 - 249.4) + (427.5 + 427.5) * (249.4 - 101.2) + (427.5 + 377.9) * (101.2 - 101.2) + (377.9 + 377.9) * (101.2 - 48.8) + (377.9 + 427.5) * (48.8 - 48.8) + (427.5 + 427.5) * (48.8 - -1.8) + (427.5 + 593.2) * (-1.8 - -1.8)\right) * 0.5 * 0.00694$

540 Vista del Lago Lane, Wake Forest, Wake County, North Carolina, United States, 27587

Gross Living Area: 6984 sq. ft

Level 2



540 Vista del Lago Lane, Wake Forest, Wake County, North Carolina, United States, 27587

Gross Living Area: 6984 sq. ft

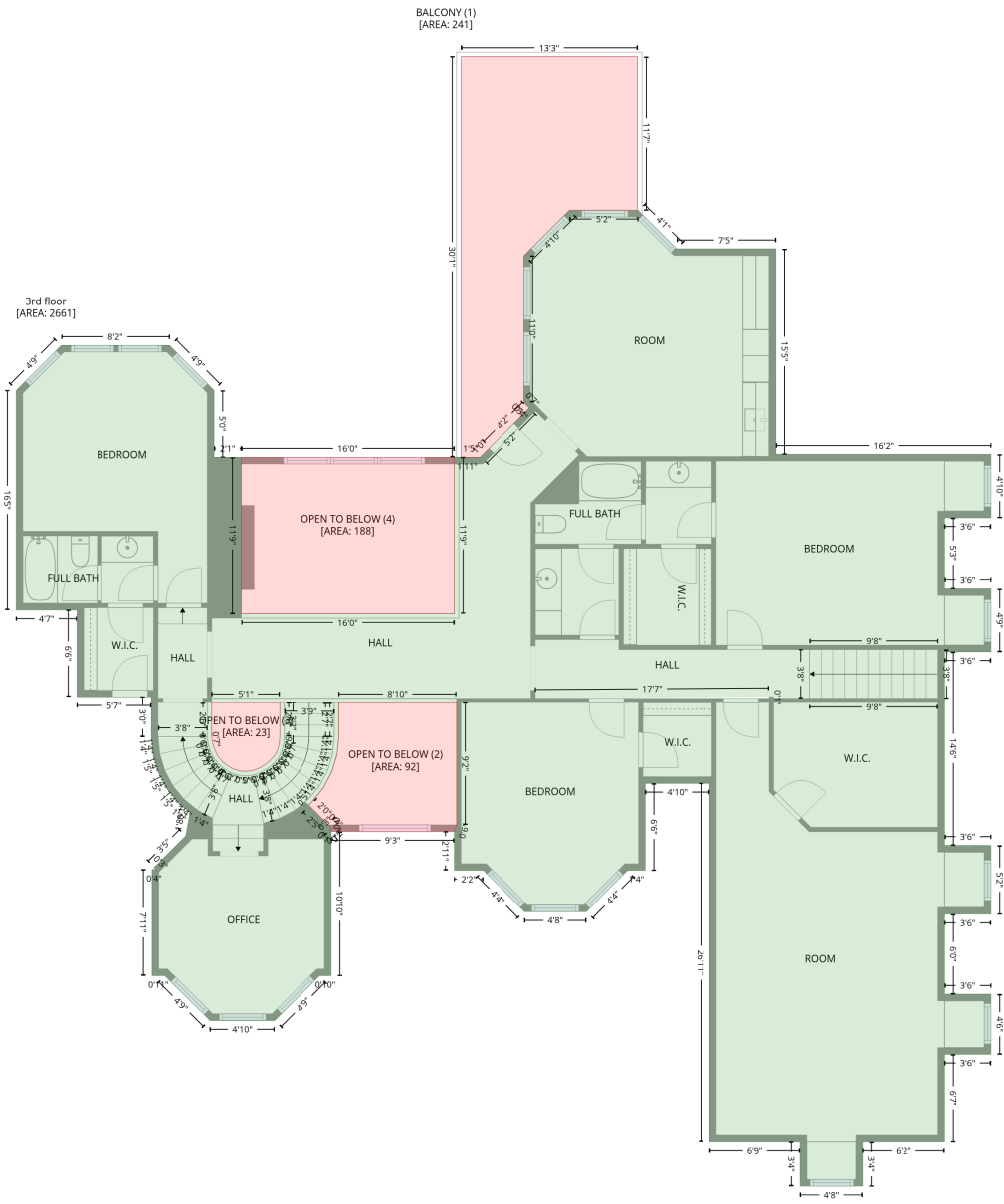
Level 2

Space	Area (sq. ft)	Calculation <small>Coordinate Polygon Area Algorithm using inches</small>
2nd floor (Living area)	2776	$ \begin{aligned} & -((592.8 + 627.5) * (144.9 - 179.5) + (627.5 + 910.6) * (179.5 - 179.5) + (910.6 + 910.6) * (179.5 - 590.1) + (910.6 + 599.2) * (590.1 - 590.1) + (599.2 + 599.2) * (590.1 - 739) + (599.2 + 583.3) * \\ & (739 - 739) + (583.3 + 546.4) * (739 - 776.3) + (546.4 + 490.6) * (776.3 - 776.3) + (490.6 + 453.6) * \\ & (776.3 - 739) + (453.6 + 433.5) * (739 - 739) + (433.5 + 433.5) * (739 - 733) + (433.5 + 427.5) * \\ & (733 - 733) + (427.5 + 427.5) * (733 - 704) + (427.5 + 316.5) * (704 - 704) + (316.5 + 316.5) * \\ & (704 - 833.7) + (316.5 + 306.1) * (833.7 - 833.7) + (306.1 + 265.8) * (833.7 - 874.1) + (265.8 + \\ & 207.5) * (874.1 - 874.1) + (207.5 + 166.8) * (874.1 - 833.7) + (166.8 + 155.4) * (833.7 - 833.7) + \\ & (155.4 + 155.4) * (833.7 - 749.5) + (155.4 + 33) * (749.5 - 749.5) + (33 + 33) * (749.5 - 695.3) + \\ & (33 + 9.2) * (695.3 - 670) + (9.2 + 9.2) * (670 - 604.5) + (9.2 + 33) * (604.5 - 579.2) + (33 + 33) * \\ & (579.2 - 307.1) + (33 + 73.5) * (307.1 - 266.5) + (73.5 + 171.2) * (266.5 - 266.5) + (171.2 + 211.1) * \\ & (266.5 - 306.8) + (211.1 + 211.1) * (306.8 - 366.9) + (211.1 + 450.7) * (366.9 - 366.9) + (450.7 + \\ & 528.3) * (366.9 - 289.3) + (528.3 + 490.1) * (289.3 - 249.4) + (490.1 + 490.1) * (249.4 - 185.8) + \\ & (490.1 + 531) * (185.8 - 144.9) + (531 + 592.8) * (144.9 - 144.9) * 0.5 * 0.00694 + -((274.4 + \\ & 270.4) * (578.8 - 578.8) + (270.4 + 270.4) * (578.8 - 618.4) + (270.4 + 270.4) * (618.4 - 618.4) + \\ & (270.4 + 274.4) * (618.4 - 618.7) + (274.4 + 274.4) * (618.7 - 578.8) * 0.5 * 0.00694 + -((323.4 + \\ & 323.4) * (619.1 - 578.8) + (323.4 + 319.4) * (578.8 - 578.8) + (319.4 + 319.4) * (578.8 - 619.1) + \\ & (319.4 + 319.5) * (619.1 - 618.7) + (319.5 + 323.4) * (618.7 - 619.1) * 0.5 * 0.00694 \end{aligned} $
GARAGE (Non-living area)	903	$ \begin{aligned} & -((910.6 + 910.6) * (590.1 - 1023.3) + (910.6 + 615.1) * (1023.3 - 1023.3) + (615.1 + 615.1) * \\ & (1023.3 - 718.9) + (615.1 + 599.2) * (718.9 - 718.9) + (599.2 + 599.2) * (718.9 - 590.1) + (599.2 + \\ & 910.6) * (590.1 - 590.1) * 0.5 * 0.00694 \end{aligned} $
SCREENED PORCH (Non-living area)	62	$ \begin{aligned} & -((427.5 + 427.5) * (704 - 733) + (427.5 + 433.5) * (733 - 733) + (433.5 + 433.5) * (733 - 781.8) + \\ & (433.5 + 316.5) * (781.8 - 781.8) + (316.5 + 316.5) * (781.8 - 704) + (316.5 + 427.5) * (704 - \\ & 704) * 0.5 * 0.00694 \end{aligned} $
SCREENED PORCH (Non-living area)	279	$ \begin{aligned} & -((598.3 + 598.3) * (0.3 - 150.4) + (598.3 + 592.8) * (150.4 - 144.9) + (592.8 + 531) * (144.9 - \\ & 144.9) + (531 + 490.1) * (144.9 - 185.8) + (490.1 + 490.1) * (185.8 - 249.4) + (490.1 + 506.7) * \\ & (249.4 - 266.5) + (506.7 + 528.3) * (266.5 - 289.3) + (528.3 + 510.9) * (289.3 - 306.8) + (510.9 + \\ & 450.7) * (306.8 - 366.9) + (450.7 + 427.5) * (366.9 - 366.9) + (427.5 + 427.5) * (366.9 - 0.3) + \\ & (427.5 + 598.3) * (0.3 - 0.3) * 0.5 * 0.00694 \end{aligned} $
DECK (Non-living area)	241	$ \begin{aligned} & -((427.5 + 427.5) * (48.8 - 366.9) + (427.5 + 211.1) * (366.9 - 366.9) + (211.1 + 211.1) * (366.9 - \\ & 306.8) + (211.1 + 193.8) * (306.8 - 289.3) + (193.8 + 174) * (289.3 - 269.3) + (174 + 188.4) * \\ & (269.3 - 255.1) + (188.4 + 381.9) * (255.1 - 255.1) + (381.9 + 381.9) * (255.1 - 48.8) + (381.9 + \\ & 427.5) * (48.8 - 48.8) * 0.5 * 0.00694 \end{aligned} $

540 Vista del Lago Lane, Wake Forest, Wake County, North Carolina, United States, 27587

Gross Living Area: 6984 sq. ft

Level 3



540 Vista del Lago Lane, Wake Forest, Wake County, North Carolina, United States, 27587

Gross Living Area: 6984 sq. ft

Level 3

Space	Area (sq. ft)	Calculation <small>Coordinate Polygon Area Algorithm using inches</small>
3rd floor (Living area)	2661	$-(189.4 + 189.5) * (687.9 - 687.1) + (189.5 + 179.8) * (687.1 - 679.1) + (179.8 + 169.2) * (679.1 - 666.2) + (169.2 + 161.3) * (666.2 - 651.4) + (161.3 + 156.4) * (651.4 - 635.4) + (156.4 + 154.8) * (635.4 - 619) + (154.8 + 154.8) * (619 - 582.8) + (154.8 + 87.7) * (582.8 - 582.8) + (87.7 + 87.7) * (582.8 - 504.4) + (87.7 + 33) * (504.4 - 504.4) + (33 + 33) * (504.4 - 307.1) + (33 + 73.5) * (307.1 - 266.5) + (73.5 + 171.2) * (266.5 - 266.5) + (171.2 + 211.1) * (266.5 - 306.8) + (211.1 + 211.1) * (306.8 - 366.9) + (211.1 + 235.6) * (366.9 - 366.9) + (235.6 + 235.6) * (366.9 - 507.8) + (235.6 + 427.5) * (507.8 - 507.8) + (427.5 + 427.5) * (507.8 - 366.9) + (427.5 + 450.7) * (366.9 - 366.9) + (450.7 + 494.9) * (366.9 - 322.7) + (494.9 + 490.1) * (322.7 - 317.7) + (490.1 + 490.1) * (317.7 - 185.8) + (490.1 + 531) * (185.8 - 144.9) + (531 + 592.8) * (144.9 - 144.9) + (592.8 + 627.5) * (144.9 - 179.5) + (627.5 + 716.9) * (179.5 - 179.5) + (716.9 + 716.9) * (179.5 - 364.3) + (716.9 + 910.6) * (364.3 - 364.3) + (910.6 + 910.6) * (364.3 - 422.1) + (910.6 + 868.9) * (422.1 - 422.1) + (868.9 + 868.9) * (422.1 - 485.4) + (868.9 + 910.6) * (485.4 - 485.4) + (910.6 + 910.6) * (485.4 - 542.1) + (910.6 + 868.9) * (542.1 - 542.1) + (868.9 + 868.9) * (542.1 - 716.5) + (868.9 + 910.6) * (716.5 - 716.5) + (910.6 + 910.6) * (716.5 - 778.4) + (910.6 + 868.9) * (778.4 - 778.4) + (868.9 + 868.9) * (778.4 - 850.4) + (868.9 + 910.6) * (850.4 - 850.4) + (910.6 + 910.6) * (850.4 - 904.4) + (910.6 + 868.9) * (904.4 - 904.4) + (868.9 + 868.9) * (904.4 - 983.6) + (868.9 + 794.9) * (983.6 - 983.6) + (794.9 + 794.9) * (983.6 - 1023.3) + (794.9 + 738.8) * (1023.3 - 1023.3) + (738.8 + 738.8) * (1023.3 - 983.6) + (738.8 + 657.4) * (983.6 - 983.6) + (657.4 + 657.4) * (983.6 - 660.7) + (657.4 + 599.2) * (660.7 - 660.7) + (599.2 + 599.2) * (660.7 - 739) + (599.2 + 583.3) * (739 - 739) + (583.3 + 546.4) * (739 - 776.3) + (546.4 + 490.6) * (776.3 - 776.3) + (490.6 + 453.6) * (776.3 - 739) + (453.6 + 427.5) * (739 - 739) + (427.5 + 427.5) * (739 - 704) + (427.5 + 429.5) * (704 - 698) + (429.5 + 429.5) * (698 - 588.1) + (429.5 + 323.4) * (588.1 - 588.1) + (323.4 + 323.4) * (588.1 - 618.7) + (323.4 + 321.9) * (618.7 - 634.2) + (321.9 + 317.3) * (634.2 - 649.8) + (317.3 + 309.8) * (649.8 - 664.2) + (309.8 + 299.6) * (664.2 - 676.8) + (299.6 + 296.9) * (676.8 - 680.7) + (296.9 + 317.3) * (680.7 - 701.3) + (317.3 + 315.4) * (701.3 - 703.1) + (315.4 + 316.5) * (703.1 - 704) + (316.5 + 316.5) * (704 - 833.7) + (316.5 + 306.1) * (833.7 - 833.7) + (306.1 + 265.8) * (833.7 - 874.1) + (265.8 + 207.5) * (874.1 - 874.1) + (207.5 + 166.8) * (874.1 - 833.7) + (166.8 + 155.4) * (833.7 - 833.7) + (155.4 + 155.4) * (833.7 - 738.2) + (155.4 + 159.1) * (738.2 - 738.2) + (159.1 + 157.2) * (738.2 - 736.5) + (157.2 + 185.9) * (736.5 - 707.8) + (185.9 + 189.4) * (707.8 - 687.9) * 0.5 * 0.00694 + -(270.4 + 209.1) * (588.1 - 588.1) + (209.1 + 209.1) * (588.1 - 618.4) + (209.1 + 209.9) * (618.4 - 624.7) + (209.9 + 211.9) * (624.7 - 630.5) + (211.9 + 214.6) * (630.5 - 636) + (214.6 + 218.2) * (636 - 640.7) + (218.2 + 223) * (640.7 - 644.6) + (223 + 228.2) * (644.6 - 647.6) + (228.2 + 234.8) * (647.6 - 649.7) + (234.8 + 240) * (649.7 - 650) + (240 + 246.1) * (650 - 649.2) + (246.1 + 251.7) * (649.2 - 647) + (251.7 + 257) * (647 - 644) + (257 + 262) * (644 - 639.9) + (262 + 265.8) * (639.9 - 635.7) + (265.8 + 268.4) * (635.7 - 630.6) + (268.4 + 269.9) * (630.6 - 624.7) + (269.9 + 270.4) * (624.7 - 618.5) + (270.4 + 270.4) * (618.5 - 588.1) * 0.5 * 0.00694 + -(710.9 + 500.4) * (582.7 - 584.1) + (500.4 + 710.9) * (584.1 - 584.1) + (710.9 + 710.9) * (584.1 - 582.7) * 0.5 * 0.00694$
BALCONY (Non-living area)	241	$-(592.3 + 592.3) * (6.3 - 144.9) + (592.3 + 531) * (144.9 - 144.9) + (531 + 490.1) * (144.9 - 185.8) + (490.1 + 490.1) * (185.8 - 317.7) + (490.1 + 492.5) * (317.7 - 320.1) + (492.5 + 494.9) * (320.1 - 322.7) + (494.9 + 459.4) * (322.7 - 358.3) + (459.4 + 450.7) * (358.3 - 366.9) + (450.7 + 433.5) * (366.9 - 366.9) + (433.5 + 433.5) * (366.9 - 6.3) + (433.5 + 592.3) * (6.3 - 6.3) * 0.5 * 0.00694$
OPEN TO BELOW (Non-living area)	92	$-(315.4 + 316.1) * (703.1 - 702.8) + (316.1 + 317.3) * (702.8 - 701.3) + (317.3 + 314.2) * (701.3 - 698.4) + (314.2 + 314.2) * (698.4 - 698) + (314.2 + 296.9) * (698 - 680.7) + (296.9 + 299.6) * (680.7 - 676.8) + (299.6 + 309.8) * (676.8 - 664.2) + (309.8 + 317.3) * (664.2 - 649.8) + (317.3 + 321.9) * (649.8 - 634.2) + (321.9 + 323.4) * (634.2 - 618.7) + (323.4 + 323.4) * (618.7 - 588.1) + (323.4 + 429.5) * (588.1 - 588.1) + (429.5 + 429.5) * (588.1 - 698) + (429.5 + 427.5) * (698 - 704) + (427.5 + 316.5) * (704 - 704) + (316.5 + 315.4) * (704 - 703.1) * 0.5 * 0.00694$
OPEN TO BELOW (Non-living area)	23	$-(270.4 + 270.4) * (588.1 - 618.5) + (270.4 + 269.9) * (618.5 - 624.7) + (269.9 + 268.4) * (624.7 - 630.6) + (268.4 + 265.8) * (630.6 - 635.7) + (265.8 + 262) * (635.7 - 639.9) + (262 + 257) * (639.9 - 644) + (257 + 251.7) * (644 - 647) + (251.7 + 246.1) * (647 - 649.2) + (246.1 + 240) * (649.2 - 650) + (240 + 234.8) * (650 - 649.7) + (234.8 + 228.2) * (649.7 - 647.6) + (228.2 + 223) * (647.6 - 644.6) + (223 + 218.2) * (644.6 - 640.7) + (218.2 + 214.6) * (640.7 - 636) + (214.6 + 211.9) * (636 - 630.5) + (211.9 + 209.9) * (630.5 - 624.7) + (209.9 + 209.1) * (624.7 - 618.4) + (209.1 + 209.1) * (618.4 - 588.1) + (209.1 + 270.4) * (588.1 - 588.1) * 0.5 * 0.00694$
OPEN TO BELOW (Non-living area)	188	$-(427.5 + 427.5) * (366.9 - 507.8) + (427.5 + 235.6) * (507.8 - 507.8) + (235.6 + 235.6) * (507.8 - 366.9) + (235.6 + 427.5) * (366.9 - 366.9) * 0.5 * 0.00694$