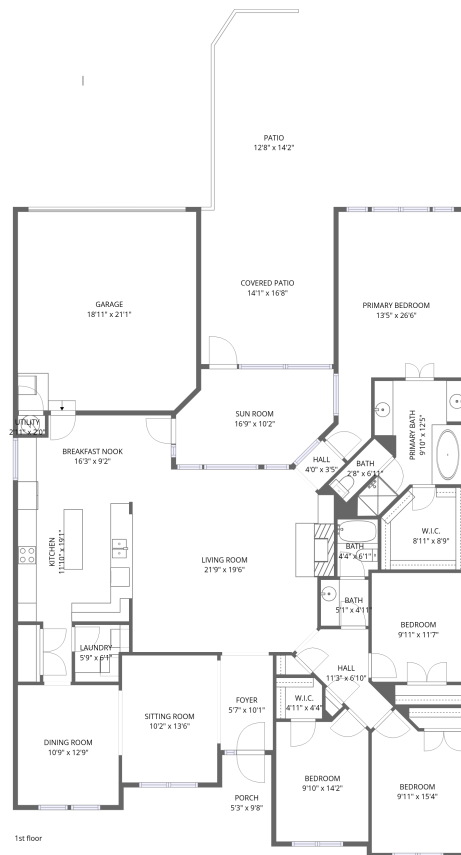


Home data report

3705 Calstone Court, Richardson, Collin County, Texas, United States, 75082



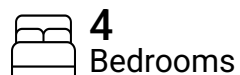
**Total Area: 2340 sq. ft**

1st Floor: 2340 sq. ft

Excluded: Garage 403 sq. ft, Porch 51 sq. ft, Covered patio 235 sq. ft, Patio 179 sq. ft,

Walls: 153 sq. ft

## Property summary



Home data report

3705 Calstone Court, Richardson, Collin County, Texas, United States, 75082



Room dimensions

Floor 1

Total:2340sqft Excluded: 868sqft

#		Dimensions	sqft	Counted as living area
1	Patio	12'8" x 14'2"	179 sq. ft	No
2	Bedroom	9'11" x 11'7"	115 sq. ft	Yes
3	Bedroom	9'10" x 14'2"	139 sq. ft	Yes
4	Sitting Room	10'2" x 13'6"	137 sq. ft	Yes
5	Porch	5'3" x 9'8"	51 sq. ft	No
6	Covered Patio	14'1" x 16'8"	234 sq. ft	No
7	Bedroom	9'11" x 15'4"	152 sq. ft	Yes
8	Primary Bath	9'10" x 12'5"	122 sq. ft	Yes
9	Sun Room	16'9" x 10'2"	170 sq. ft	Yes
10	W.I.C.	4'11" x 4'4"	21 sq. ft	Yes
11	Utility	2'11" x 2'0"	6 sq. ft	Yes

Home data report

**3705 Calstone Court, Richardson, Collin County, Texas, United States, 75082**

#		Dimensions	sqft	Counted as living area
12	Living Room	21'9" x 19'6"	424 sq. ft	Yes
13	Bath	2'8" x 6'11"	18 sq. ft	Yes
14	Garage	18'11" x 21'1"	399 sq. ft	No
15	Primary Bedroom	13'5" x 26'6"	356 sq. ft	Yes
16	Bath	4'4" x 6'1"	26 sq. ft	Yes
17	W.I.C.	8'11" x 8'9"	78 sq. ft	Yes
18	Laundry	5'9" x 6'1"	35 sq. ft	Yes
19	Kitchen	11'10" x 19'1"	226 sq. ft	Yes
20	Hall	4'0" x 3'5"	14 sq. ft	Yes
21	Breakfast Nook	16'3" x 9'2"	150 sq. ft	Yes
22	Hall	11'3" x 6'10"	77 sq. ft	Yes
23	Bath	5'1" x 4'11"	25 sq. ft	Yes
24	Dining Room	10'9" x 12'9"	137 sq. ft	Yes
25	Foyer	5'7" x 10'1"	56 sq. ft	Yes

## 1 Floor 1 - Patio



Dimensions: 12'8" x 14'2"  
Area: 179 sq. ft  
Counted as living area: No

Heated: No  
Finished: No  
Enclosed: No  
Contiguous: Yes  
Permitted: Yes  
Wet space: No  
Addition: No  
Conversion: No

## 2 Floor 1 - Bedroom



Dimensions: 9'11" x 11'7"  
Area: 115 sq. ft  
Counted as living area: Yes

Heated: Yes  
Finished: Yes  
Enclosed: Yes  
Contiguous: Yes  
Permitted: Yes  
Wet space: No  
Addition: No  
Conversion: No

### 3 Floor 1 - Bedroom



Dimensions: 9'10" x 14'2"  
Area: 139 sq. ft  
Counted as living area: Yes

Heated: Yes  
Finished: Yes  
Enclosed: Yes  
Contiguous: Yes  
Permitted: Yes  
Wet space: No  
Addition: No  
Conversion: No

### 4 Floor 1 - Sitting Room



Dimensions: 10'2" x 13'6"  
Area: 137 sq. ft  
Counted as living area: Yes

Heated: Yes  
Finished: Yes  
Enclosed: Yes  
Contiguous: Yes  
Permitted: Yes  
Wet space: No  
Addition: No  
Conversion: No

### 5 Floor 1 - Porch



Dimensions: 5'3" x 9'8"  
Area: 51 sq. ft  
Counted as living area: No

Heated: No  
Finished: No  
Enclosed: No  
Contiguous: Yes  
Permitted: Yes  
Wet space: No  
Addition: No  
Conversion: No

## 6 Floor 1 - Covered Patio



Dimensions: 14'1" x 16'8"  
Area: 234 sq. ft  
Counted as living area: No

Heated: No  
Finished: No  
Enclosed: No  
Contiguous: Yes  
Permitted: Yes  
Wet space: No  
Addition: No  
Conversion: No

## 7 Floor 1 - Bedroom



Dimensions: 9'11" x 15'4"  
Area: 152 sq. ft  
Counted as living area: Yes

Heated: Yes  
Finished: Yes  
Enclosed: Yes  
Contiguous: Yes  
Permitted: Yes  
Wet space: No  
Addition: No  
Conversion: No

## 8 Floor 1 - Primary Bath



Dimensions: 9'10" x 12'5"  
Area: 122 sq. ft  
Counted as living area: Yes

Heated: Yes  
Finished: Yes  
Enclosed: Yes  
Contiguous: Yes  
Permitted: Yes  
Wet space: Yes  
Addition: No  
Conversion: No

### 9 Floor 1 - Sun Room



Dimensions: 16'9" x 10'2"  
Area: 170 sq. ft  
Counted as living area: Yes

Heated: Yes  
Finished: Yes  
Enclosed: Yes  
Contiguous: Yes  
Permitted: Yes  
Wet space: No  
Addition: No  
Conversion: No

### 10 Floor 1 - W.I.C.



Dimensions: 4'11" x 4'4"  
Area: 21 sq. ft  
Counted as living area: Yes

Heated: Yes  
Finished: Yes  
Enclosed: Yes  
Contiguous: Yes  
Permitted: Yes  
Wet space: No  
Addition: No  
Conversion: No

### 11 Floor 1 - Utility



Dimensions: 2'11" x 2'0"  
Area: 6 sq. ft  
Counted as living area: No

Heated: Yes  
Finished: No  
Enclosed: Yes  
Contiguous: Yes  
Permitted: Yes  
Wet space: No  
Addition: No  
Conversion: No

## 12 Floor 1 - Living Room



Dimensions: 21'9" x 19'6"  
Area: 424 sq. ft  
Counted as living area: Yes

Heated: Yes  
Finished: Yes  
Enclosed: Yes  
Contiguous: Yes  
Permitted: Yes  
Wet space: No  
Addition: No  
Conversion: No

## 13 Floor 1 - Bath



Dimensions: 2'8" x 6'11"  
Area: 18 sq. ft  
Counted as living area: Yes

Heated: Yes  
Finished: Yes  
Enclosed: Yes  
Contiguous: Yes  
Permitted: Yes  
Wet space: Yes  
Addition: No  
Conversion: No

## 14 Floor 1 - Garage



Dimensions: 18'11" x 21'1"  
Area: 399 sq. ft  
Counted as living area: No

Heated: No  
Finished: No  
Enclosed: Yes  
Contiguous: Yes  
Permitted: Yes  
Wet space: No  
Addition: No  
Conversion: No

### 15 Floor 1 - Primary Bedroom

---



Dimensions: 13'5" x 26'6"  
Area: 356 sq. ft  
Counted as living area: Yes

Heated: Yes  
Finished: Yes  
Enclosed: Yes  
Contiguous: Yes  
Permitted: Yes  
Wet space: No  
Addition: No  
Conversion: No

### 16 Floor 1 - Bath

---



Dimensions: 4'4" x 6'1"  
Area: 26 sq. ft  
Counted as living area: Yes

Heated: Yes  
Finished: Yes  
Enclosed: Yes  
Contiguous: Yes  
Permitted: Yes  
Wet space: Yes  
Addition: No  
Conversion: No

### 17 Floor 1 - W.I.C.

---



Dimensions: 8'11" x 8'9"  
Area: 78 sq. ft  
Counted as living area: Yes

Heated: Yes  
Finished: Yes  
Enclosed: Yes  
Contiguous: Yes  
Permitted: Yes  
Wet space: No  
Addition: No  
Conversion: No

**18** Floor 1 - Laundry

---



Dimensions: 5'9" x 6'1"  
Area: 35 sq. ft  
Counted as living area: Yes

Heated: Yes  
Finished: Yes  
Enclosed: Yes  
Contiguous: Yes  
Permitted: Yes  
Wet space: No  
Addition: No  
Conversion: No

**19** Floor 1 - Kitchen

---



Dimensions: 11'10" x 19'1"  
Area: 226 sq. ft  
Counted as living area: Yes

Heated: Yes  
Finished: Yes  
Enclosed: Yes  
Contiguous: Yes  
Permitted: Yes  
Wet space: No  
Addition: No  
Conversion: No

**20** Floor 1 - Hall

---



Dimensions: 4'0" x 3'5"  
Area: 14 sq. ft  
Counted as living area: Yes

Heated: Yes  
Finished: Yes  
Enclosed: Yes  
Contiguous: Yes  
Permitted: Yes  
Wet space: No  
Addition: No  
Conversion: No

### 21 Floor 1 - Breakfast Nook



Dimensions: 16'3" x 9'2"  
Area: 150 sq. ft  
Counted as living area: Yes

Heated: Yes  
Finished: Yes  
Enclosed: Yes  
Contiguous: Yes  
Permitted: Yes  
Wet space: No  
Addition: No  
Conversion: No

### 22 Floor 1 - Hall



Dimensions: 11'3" x 6'10"  
Area: 77 sq. ft  
Counted as living area: Yes

Heated: Yes  
Finished: Yes  
Enclosed: Yes  
Contiguous: Yes  
Permitted: Yes  
Wet space: No  
Addition: No  
Conversion: No

### 23 Floor 1 - Bath



Dimensions: 5'1" x 4'11"  
Area: 25 sq. ft  
Counted as living area: Yes

Heated: Yes  
Finished: Yes  
Enclosed: Yes  
Contiguous: Yes  
Permitted: Yes  
Wet space: Yes  
Addition: No  
Conversion: No

**24** Floor 1 - Dining Room

---



Dimensions: 10'9" x 12'9"  
Area: 137 sq. ft  
Counted as living area: Yes

Heated: Yes  
Finished: Yes  
Enclosed: Yes  
Contiguous: Yes  
Permitted: Yes  
Wet space: No  
Addition: No  
Conversion: No

**25** Floor 1 - Foyer

---



Dimensions: 5'7" x 10'1"  
Area: 56 sq. ft  
Counted as living area: Yes

Heated: Yes  
Finished: Yes  
Enclosed: Yes  
Contiguous: Yes  
Permitted: Yes  
Wet space: No  
Addition: No  
Conversion: No