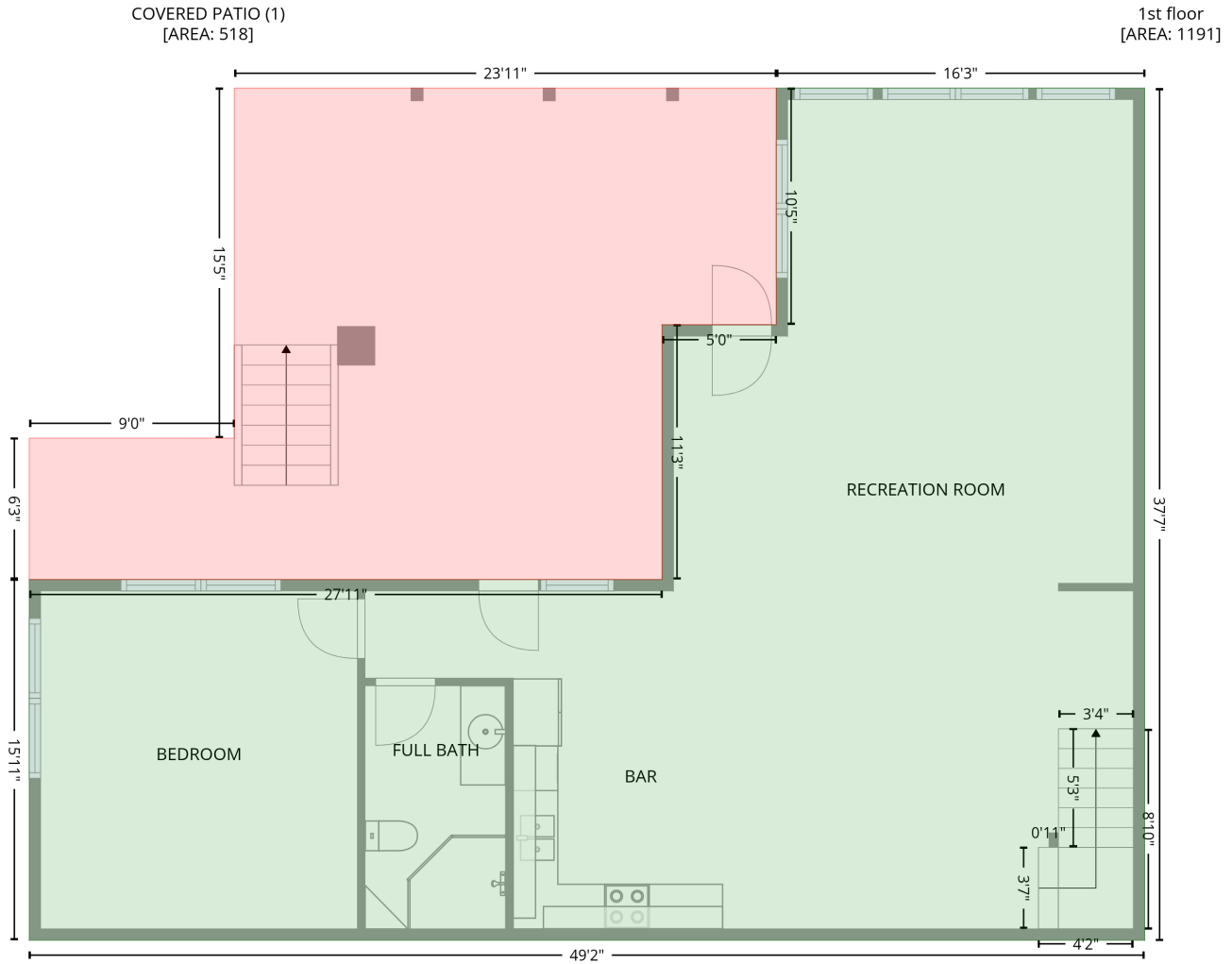


# 15001 Majestic Oak Drive, Pleasant Hill Road, Charlotte, Mecklenburg County, North Carolina, United States, 28278

Gross Living Area: 3727 sq. ft

## Level 1

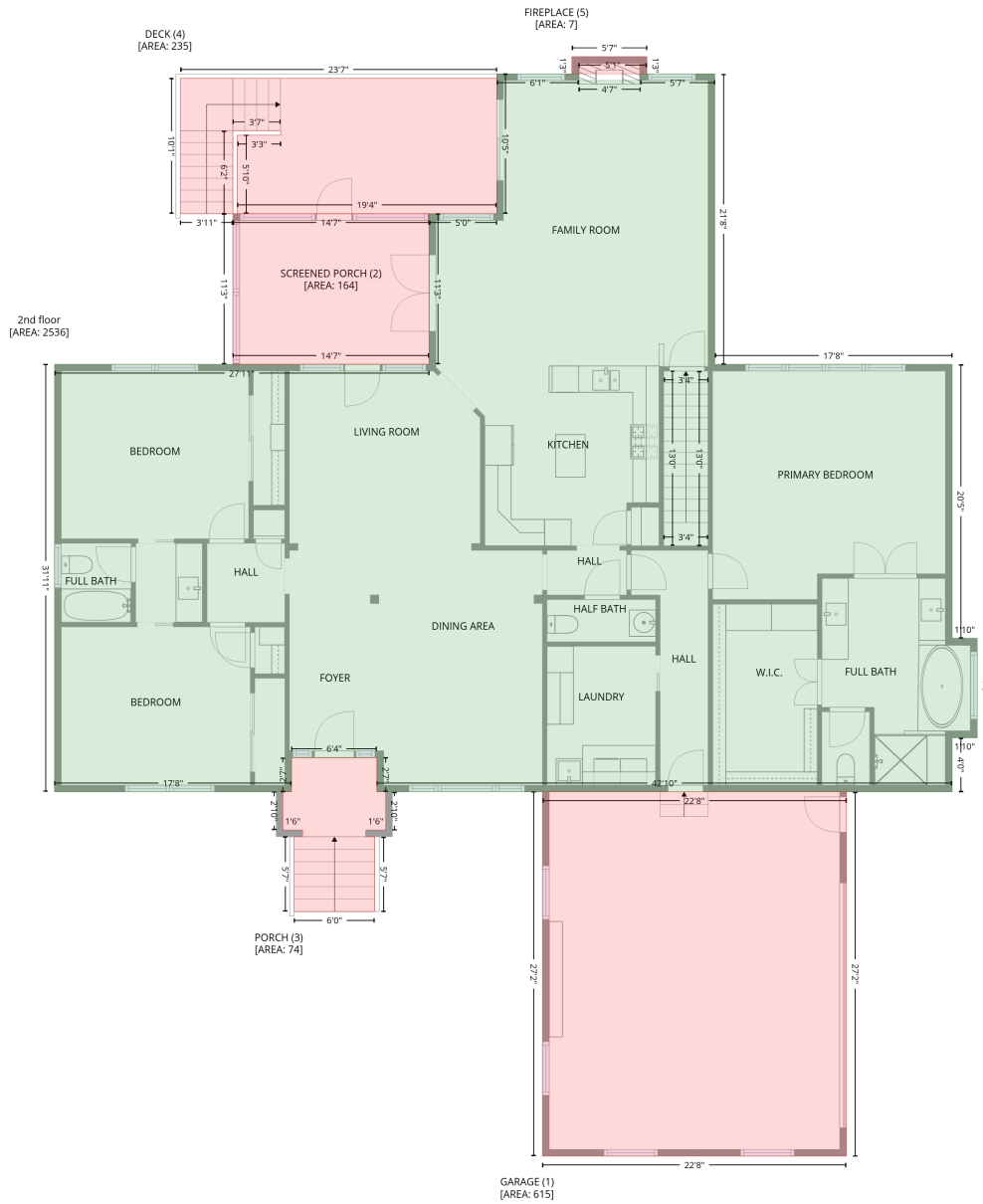


Space	Area (sq. ft)	Calculation <small>Coordinate Polygon Area Algorithm using inches</small>
1st floor (Living area)	1191	$-((663.2 + 663.2) * (24.1 - 475) + (663.2 + 72.9) * (475 - 475) + (72.9 + 72.9) * (475 - 284.1) + (72.9 + 407.8) * (284.1 - 284.1) + (407.8 + 407.8) * (284.1 - 149.3) + (407.8 + 468.2) * (149.3 - 149.3) + (468.2 + 468.2) * (149.3 - 24.1) + (468.2 + 663.2) * (24.1 - 24.1)) * 0.5 + 0.00694$
COVERED PATIO (Non-living area)	518	$-((468.2 + 468.2) * (24.1 - 149.3) + (468.2 + 407.8) * (149.3 - 149.3) + (407.8 + 407.8) * (149.3 - 284.1) + (407.8 + 72.9) * (284.1 - 284.1) + (72.9 + 72.9) * (284.1 - 209.3) + (72.9 + 181.4) * (209.3 - 209.3) + (181.4 + 181.4) * (209.3 - 24.1) + (181.4 + 468.2) * (24.1 - 24.1)) * 0.5 + 0.00694$

# 15001 Majestic Oak Drive, Pleasant Hill Road, Charlotte, Mecklenburg County, North Carolina, United States, 28278

Gross Living Area: 3727 sq. ft

## Level 2



Space	Area (sq. ft)	Calculation
2nd floor (Living area)	2536	Coordinate Polygon Area Algorithm using inches $-((541.4 + 541.4) * (24.1 - 30.1) + (541.4 + 596.5) * (30.1 - 30.1) + (596.5 + 596.5) * (30.1 - 24.1) + (596.5 + 663.2) * (24.1 - 24.1) + (663.2 + 663.2) * (24.1 - 284.1) + (663.2 + 875.4) * (284.1 - 284.1) + (875.4 + 875.4) * (284.1 - 529.2) + (875.4 + 897.8) * (529.2 - 529.2) + (897.8 + 897.8) * (529.2 - 618.3) + (897.8 + 875.4) * (618.3 - 618.3) + (875.4 + 875.4) * (618.3 - 666.7) + (875.4 + 361.1) * (666.7 - 666.7) + (361.1 + 361.1) * (666.7 - 636) + (361.1 + 284.8) * (636 - 636) + (284.8 + 284.8) * (636 - 666.7) + (284.8 + 72.9) * (666.7 - 666.7) + (72.9 + 72.9) * (666.7 - 284.1) + (72.9 + 407.8) * (284.1 - 284.1) + (407.8 + 407.8) * (284.1 - 149.3) + (407.8 + 468.2) * (149.3 - 149.3) + (468.2 + 468.2) * (149.3 - 24.1) + (468.2 + 541.4) * (24.1 - 24.1)) * 0.5 * 0.00694$

# 15001 Majestic Oak Drive, Pleasant Hill Road, Charlotte, Mecklenburg County, North Carolina, United States, 28278

Gross Living Area: 3727 sq. ft

## Level 2

Space	Area (sq. ft)	Calculation <small>Coordinate Polygon Area Algorithm using inches</small>
GARAGE (Non-living area)	615	$-\left((780.9 + 780.9) * (666.7 - 992.7) + (780.9 + 509.2) * (992.7 - 992.7) + (509.2 + 509.2) * (992.7 - 666.7) + (509.2 + 780.9) * (666.7 - 666.7)\right) * 0.5 * 0.00694$
SCREENED PORCH (Non-living area)	164	$-\left((407.8 + 407.8) * (149.3 - 284.1) + (407.8 + 232.4) * (284.1 - 284.1) + (232.4 + 232.4) * (284.1 - 149.3) + (232.4 + 407.8) * (149.3 - 149.3)\right) * 0.5 * 0.00694$
PORCH (Non-living area)	74	$-\left((361.1 + 361.1) * (636 - 666.7) + (361.1 + 369) * (666.7 - 666.7) + (369 + 369) * (666.7 - 700.9) + (369 + 351.2) * (700.9 - 700.9) + (351.2 + 351.2) * (700.9 - 706.9) + (351.2 + 359.3) * (706.9 - 706.9) + (359.3 + 359.3) * (706.9 - 773.9) + (359.3 + 287.2) * (773.9 - 773.9) + (287.2 + 287.2) * (773.9 - 706.9) + (287.2 + 294.7) * (706.9 - 706.9) + (294.7 + 294.7) * (706.9 - 700.9) + (294.7 + 277.1) * (700.9 - 700.9) + (277.1 + 277.1) * (700.9 - 666.7) + (277.1 + 284.8) * (666.7 - 666.7) + (284.8 + 284.8) * (666.7 - 636) + (284.8 + 361.1) * (636 - 636)\right) * 0.5 * 0.00694$
DECK (Non-living area)	235	$-\left((468.2 + 468.2) * (28.1 - 149.3) + (468.2 + 236.4) * (149.3 - 149.3) + (236.4 + 236.4) * (149.3 - 79.1) + (236.4 + 275.3) * (79.1 - 79.1) + (275.3 + 275.3) * (79.1 - 75.1) + (275.3 + 232.4) * (75.1 - 75.1) + (232.4 + 232.4) * (75.1 - 149.3) + (232.4 + 185.4) * (149.3 - 149.3) + (185.4 + 185.4) * (149.3 - 28.1) + (185.4 + 468.2) * (28.1 - 28.1)\right) * 0.5 * 0.00694$
FIREPLACE (Non-living area)	7	$-\left((602.5 + 602.5) * (8.8 - 24.1) + (602.5 + 541.5) * (24.1 - 24.1) + (541.5 + 541.4) * (24.1 - 14.8) + (541.4 + 541.4) * (14.8 - 24.1) + (541.4 + 535.4) * (24.1 - 24.1) + (535.4 + 535.4) * (24.1 - 8.8) + (535.4 + 602.5) * (8.8 - 8.8)\right) * 0.5 * 0.00694$