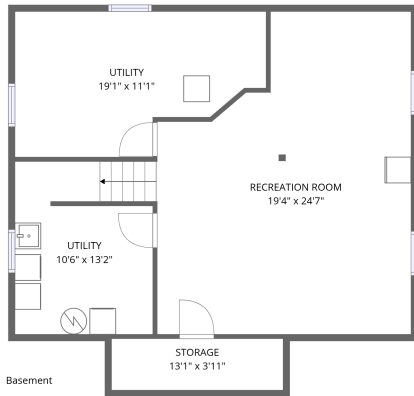
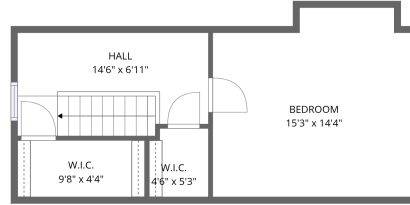
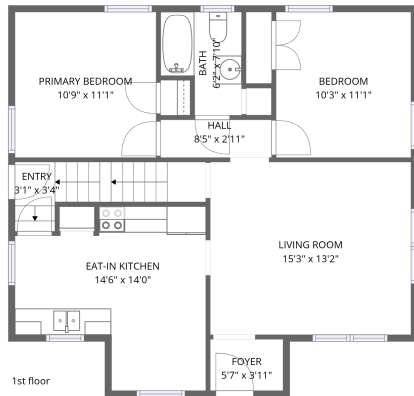


# Home data report

## 7222 Red Arrow Hwy,Stevensville,MI,US




**Total Area: 1599 sq. ft**

Basement: 422 sq. ft, 1st Floor: 796 sq. ft, 2nd Floor: 381 sq. ft

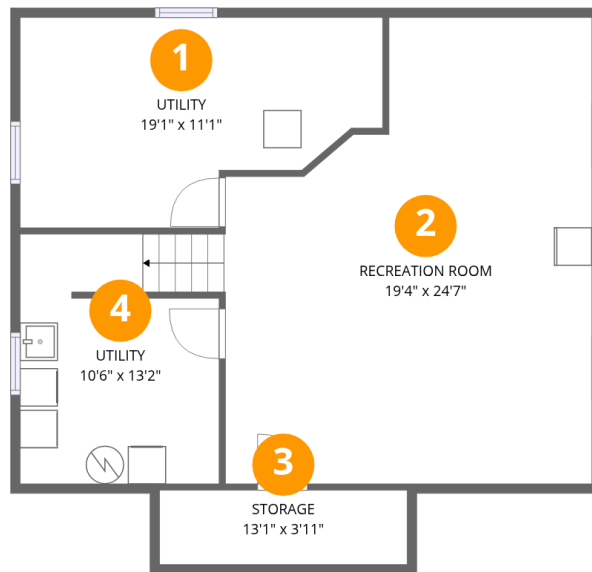
Excluded: Storage 52 sq. ft, Utility 322 sq. ft, Low ceiling 9 sq. ft, Walls: 165 sq. ft

### Property summary

 **3** Floors

 **3** Bedrooms

 **1** Bathrooms



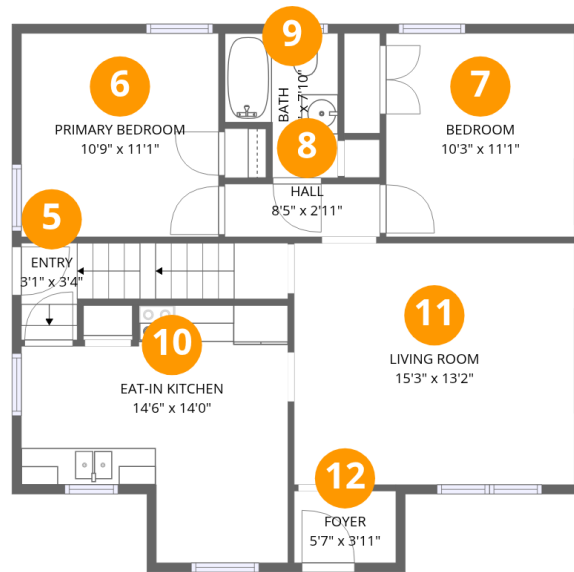
## Room dimensions

Floor 1 Below grade

Total:422sqft

Excluded: 374sqft

#		Dimensions	sqft	Counted as living area
1	Utility	19'1" x 11'1"	212 sq. ft	No
2	Recreation Room	19'4" x 24'7"	475 sq. ft	Yes
3	Storage	13'1" x 3'11"	51 sq. ft	No
4	Utility	10'6" x 13'2"	138 sq. ft	No



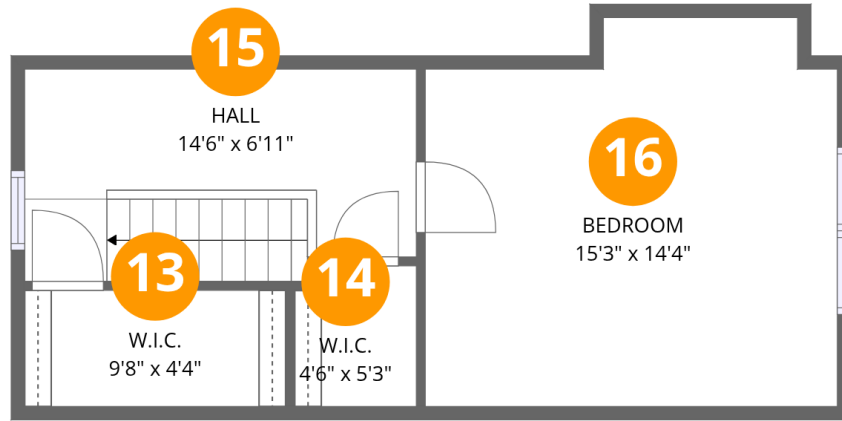
## Room dimensions

Floor 2

Total:796sqft

Excluded: 0sqft

#		Dimensions	sqft	Counted as living area
5	Entry	3'1" x 3'4"	10 sq. ft	Yes
6	Primary Bedroom	10'9" x 11'1"	119 sq. ft	Yes
7	Bedroom	10'3" x 11'1"	114 sq. ft	Yes
8	Hall	8'5" x 2'11"	24 sq. ft	Yes
9	Bath	6'2" x 7'10"	48 sq. ft	Yes
10	Eat-in Kitchen	14'6" x 14'0"	204 sq. ft	Yes
11	Living Room	15'3" x 13'2"	201 sq. ft	Yes
12	Foyer	5'7" x 3'11"	22 sq. ft	Yes



## Room dimensions

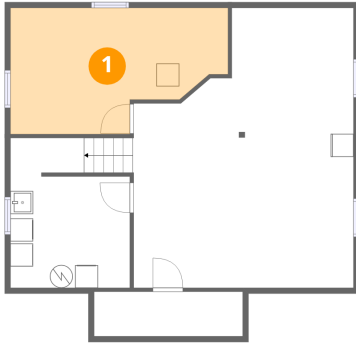
Floor 3

Total:381sqft

Excluded: 9sqft

#		Dimensions	sqft	Counted as living area
13	W.I.C.	9'8" x 4'4"	42 sq. ft	Yes
14	W.I.C.	4'6" x 5'3"	24 sq. ft	Yes
15	Hall	14'6" x 6'11"	101 sq. ft	Yes
16	Bedroom	15'3" x 14'4"	219 sq. ft	Yes

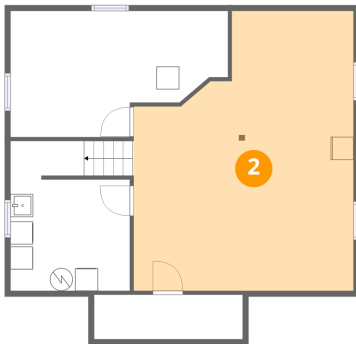
## 1 Floor 1 - Utility



Dimensions: 19'1" x 11'1"  
Area: 212 sq. ft  
Counted as living area: No

Heated: Yes  
Finished: No  
Enclosed: Yes  
Contiguous: Yes  
Permitted: Yes  
Wet space: No  
Addition: No  
Conversion: No

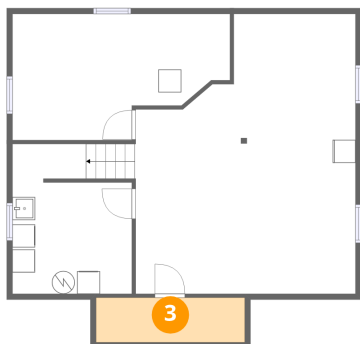
## 2 Floor 1 - Recreation Room



Dimensions: 19'4" x 24'7"  
Area: 475 sq. ft  
Counted as living area: No

Heated: Yes  
Finished: Yes  
Enclosed: Yes  
Contiguous: No  
Permitted: Yes  
Wet space: No  
Addition: No  
Conversion: No

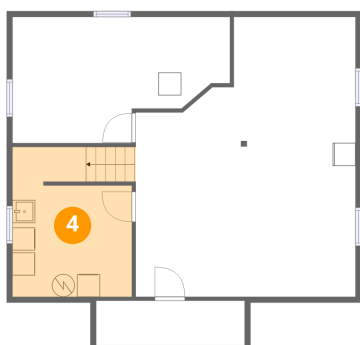
### 3 Floor 1 - Storage



Dimensions: 13'1" x 3'11"  
Area: 51 sq. ft  
Counted as living area: No

Heated: No  
Finished: No  
Enclosed: No  
Contiguous: Yes  
Permitted: Yes  
Wet space: No  
Addition: No  
Conversion: No

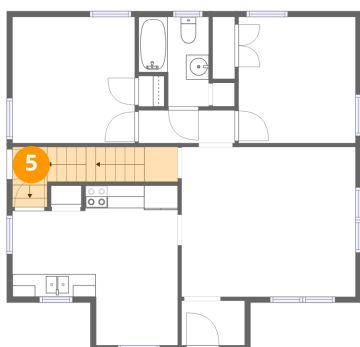
### 4 Floor 1 - Utility



Dimensions: 10'6" x 13'2"  
Area: 138 sq. ft  
Counted as living area: No

Heated: Yes  
Finished: No  
Enclosed: Yes  
Contiguous: Yes  
Permitted: Yes  
Wet space: No  
Addition: No  
Conversion: No

### 5 Floor 2 - Entry



Dimensions: 3'1" x 3'4"  
Area: 10 sq. ft  
Counted as living area: Yes

Heated: Yes  
Finished: Yes  
Enclosed: Yes  
Contiguous: Yes  
Permitted: Yes  
Wet space: No  
Addition: No  
Conversion: No

## 6 Floor 2 - Primary Bedroom



Dimensions: 10'9" x 11'1"  
Area: 119 sq. ft  
Counted as living area: Yes

Heated: Yes  
Finished: Yes  
Enclosed: Yes  
Contiguous: Yes  
Permitted: Yes  
Wet space: No  
Addition: No  
Conversion: No

## 7 Floor 2 - Bedroom



Dimensions: 10'3" x 11'1"  
Area: 114 sq. ft  
Counted as living area: Yes

Heated: Yes  
Finished: Yes  
Enclosed: Yes  
Contiguous: Yes  
Permitted: Yes  
Wet space: No  
Addition: No  
Conversion: No

## 8 Floor 2 - Hall



Dimensions: 8'5" x 2'11"  
Area: 24 sq. ft  
Counted as living area: Yes

Heated: Yes  
Finished: Yes  
Enclosed: Yes  
Contiguous: Yes  
Permitted: Yes  
Wet space: No  
Addition: No  
Conversion: No

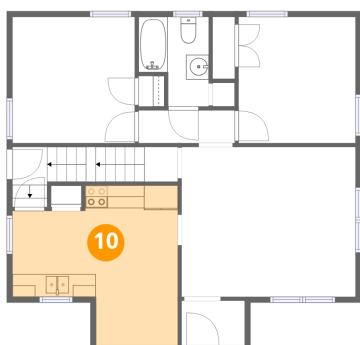
### 9 Floor 2 - Bath



Dimensions: 6'2" x 7'10"  
Area: 48 sq. ft  
Counted as living area: Yes

Heated: Yes  
Finished: Yes  
Enclosed: Yes  
Contiguous: Yes  
Permitted: Yes  
Wet space: Yes  
Addition: No  
Conversion: No

### 10 Floor 2 - Eat-in Kitchen



Dimensions: 14'6" x 14'0"  
Area: 204 sq. ft  
Counted as living area: Yes

Heated: Yes  
Finished: Yes  
Enclosed: Yes  
Contiguous: Yes  
Permitted: Yes  
Wet space: No  
Addition: No  
Conversion: No

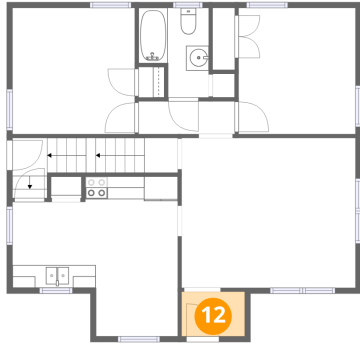
### 11 Floor 2 - Living Room



Dimensions: 15'3" x 13'2"  
Area: 201 sq. ft  
Counted as living area: Yes

Heated: Yes  
Finished: Yes  
Enclosed: Yes  
Contiguous: Yes  
Permitted: Yes  
Wet space: No  
Addition: No  
Conversion: No

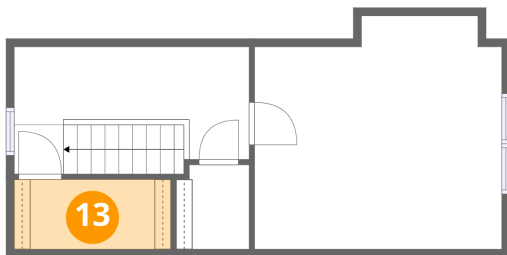
**12** Floor 2 - Foyer



Dimensions: 5'7" x 3'11"  
Area: 22 sq. ft  
Counted as living area: Yes

Heated: Yes  
Finished: Yes  
Enclosed: Yes  
Contiguous: Yes  
Permitted: Yes  
Wet space: No  
Addition: No  
Conversion: No

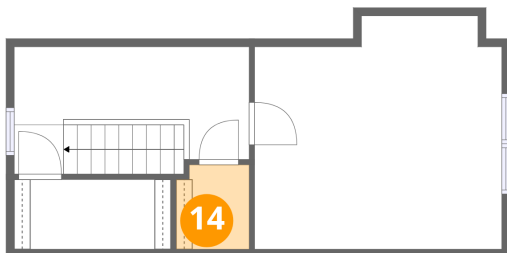
**13** Floor 3 - W.I.C.



Dimensions: 9'8" x 4'4"  
Area: 42 sq. ft  
Counted as living area: Yes

Heated: Yes  
Finished: Yes  
Enclosed: Yes  
Contiguous: Yes  
Permitted: Yes  
Wet space: No  
Addition: No  
Conversion: No

**14** Floor 3 - W.I.C.

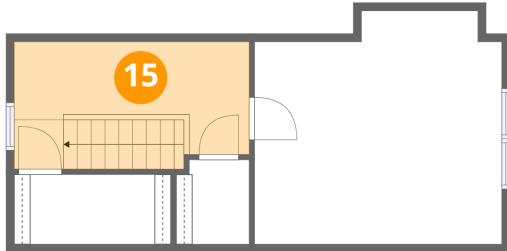


Dimensions: 4'6" x 5'3"  
Area: 24 sq. ft  
Counted as living area: Yes

Heated: Yes  
Finished: Yes  
Enclosed: Yes  
Contiguous: Yes  
Permitted: Yes  
Wet space: No  
Addition: No  
Conversion: No

**15** Floor 3 - Hall

---

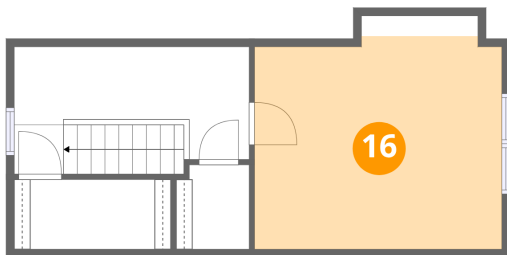


Dimensions: 14'6" x 6'11"  
Area: 101 sq. ft  
Counted as living area: Yes

Heated: Yes  
Finished: Yes  
Enclosed: Yes  
Contiguous: Yes  
Permitted: Yes  
Wet space: No  
Addition: No  
Conversion: No

**16** Floor 3 - Bedroom

---



Dimensions: 15'3" x 14'4"  
Area: 219 sq. ft  
Counted as living area: Yes

Heated: Yes  
Finished: Yes  
Enclosed: Yes  
Contiguous: Yes  
Permitted: Yes  
Wet space: No  
Addition: No  
Conversion: No