

Home report

**501 Harbor Ridge Drive, Goodview, Bedford County, Virginia,
United States, 24095**



Total Area: 1405 sq. ft

Below Ground: 397 sq. ft, Floor 2: 491 sq. ft, Floor 3: 517 sq. ft

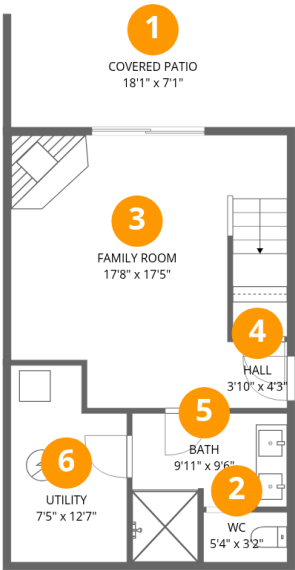
Excluded: Utility 84 sq. ft, Covered patio 130 sq. ft, Porch 36 sq. ft, Balcony 183 sq. ft,
Walls: 128 sq. ft

Property summary



Home report

501 Harbor Ridge Drive, Goodview, Bedford County, Virginia,
United States, 24095



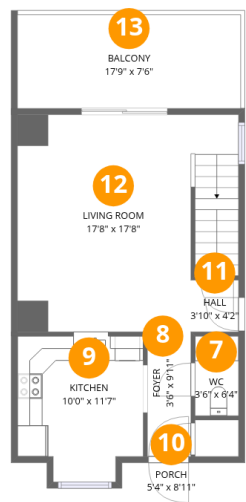
Room dimensions

Floor 1 Below ground Total:397sqft Excluded: 214sqft

#		Max Dimensions	sqft	Included
1	Covered Patio	18'1" x 7'1"	130 sq. ft	No
2	WC	5'4" x 3'2"	17 sq. ft	Yes
3	Family Room	17'8" x 17'5"	273 sq. ft	Yes
4	Hall	3'10" x 4'3"	16 sq. ft	Yes
5	Bath	9'11" x 9'6"	74 sq. ft	Yes
6	Utility	7'5" x 12'7"	84 sq. ft	No

Home report

501 Harbor Ridge Drive, Goodview, Bedford County, Virginia,
United States, 24095



Room dimensions

Floor 2 Total:491sqft Excluded: 169sqft

#		Max Dimensions	sqft	Included
7	WC	3'6" x 6'4"	22 sq. ft	Yes
8	Foyer	3'6" x 9'11"	35 sq. ft	Yes
9	Kitchen	10'0" x 11'7"	107 sq. ft	Yes
10	Porch	5'4" x 8'11"	36 sq. ft	No
11	Hall	3'10" x 4'2"	16 sq. ft	Yes
12	Living Room	17'8" x 17'8"	287 sq. ft	Yes
13	Balcony	17'9" x 7'6"	133 sq. ft	No

Home report

501 Harbor Ridge Drive, Goodview, Bedford County, Virginia,
United States, 24095



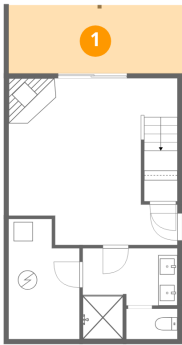
Room dimensions

Floor 3 Total:517sqft Excluded: 50sqft

#		Max Dimensions	sqft	Included
14	Balcony	13'10" x 3'7"	50 sq. ft	No
15	Bedroom	13'10" x 14'2"	196 sq. ft	Yes
16	Bedroom	14'5" x 9'5"	136 sq. ft	Yes
17	Hall	7'8" x 6'5"	68 sq. ft	Yes
18	Bath	9'7" x 5'1"	49 sq. ft	Yes

501 Harbor Ridge Drive, Goodview, Bedford County, Virginia,
United States, 24095

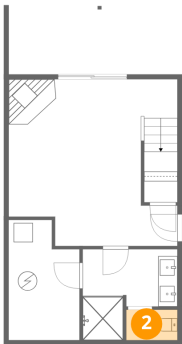
1 Floor 1 - Covered Patio



Max Dimensions: 18'1" x 7'1"
Calculated Area: 130 sq. ft
Included: No

Heated: No
Finished: No
Enclosed: No
Contiguous: Yes
Permitted: Yes
Wet space: No
Addition: No
Conversion: No

2 Floor 1 - WC

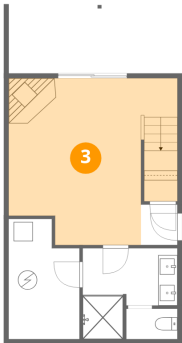


Max Dimensions: 5'4" x 3'2"
Calculated Area: 17 sq. ft
Included: Yes

Heated: Yes
Finished: Yes
Enclosed: Yes
Contiguous: Yes
Permitted: Yes
Wet space: Yes
Addition: No
Conversion: No

501 Harbor Ridge Drive, Goodview, Bedford County, Virginia,
United States, 24095

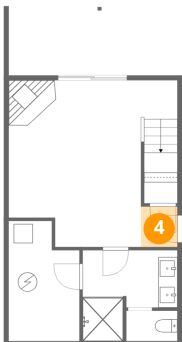
3 Floor 1 - Family Room



Max Dimensions: 17'8" x 17'5"
Calculated Area: 273 sq. ft
Included: Yes

Heated: Yes
Finished: Yes
Enclosed: Yes
Contiguous: Yes
Permitted: Yes
Wet space: No
Addition: No
Conversion: No

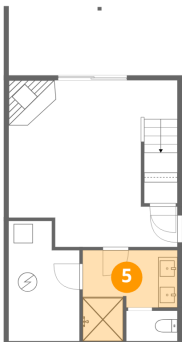
4 Floor 1 - Hall



Max Dimensions: 3'10" x 4'3"
Calculated Area: 16 sq. ft
Included: Yes

Heated: Yes
Finished: Yes
Enclosed: Yes
Contiguous: Yes
Permitted: Yes
Wet space: No
Addition: No
Conversion: No

5 Floor 1 - Bath

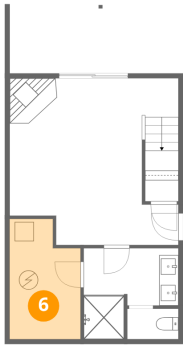


Max Dimensions: 9'11" x 9'6"
Calculated Area: 74 sq. ft
Included: Yes

Heated: Yes
Finished: Yes
Enclosed: Yes
Contiguous: Yes
Permitted: Yes
Wet space: Yes
Addition: No
Conversion: No

501 Harbor Ridge Drive, Goodview, Bedford County, Virginia,
United States, 24095

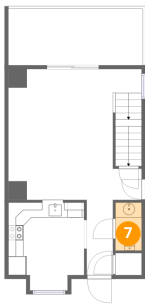
6 Floor 1 - Utility



Max Dimensions: 7'5" x 12'7"
Calculated Area: 84 sq. ft
Included: No

Heated: Yes
Finished: No
Enclosed: Yes
Contiguous: Yes
Permitted: Yes
Wet space: No
Addition: No
Conversion: No

7 Floor 2 - WC



Max Dimensions: 3'6" x 6'4"
Calculated Area: 22 sq. ft
Included: Yes

Heated: Yes
Finished: Yes
Enclosed: Yes
Contiguous: Yes
Permitted: Yes
Wet space: Yes
Addition: No
Conversion: No

8 Floor 2 - Foyer

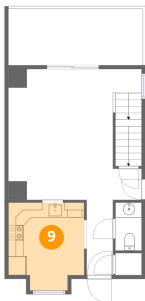


Max Dimensions: 3'6" x 9'11"
Calculated Area: 35 sq. ft
Included: Yes

Heated: Yes
Finished: Yes
Enclosed: Yes
Contiguous: Yes
Permitted: Yes
Wet space: No
Addition: No
Conversion: No

501 Harbor Ridge Drive, Goodview, Bedford County, Virginia,
United States, 24095

9 Floor 2 - Kitchen



Max Dimensions: 10'0" x 11'7"
Calculated Area: 107 sq. ft
Included: Yes

Heated: Yes
Finished: Yes
Enclosed: Yes
Contiguous: Yes
Permitted: Yes
Wet space: No
Addition: No
Conversion: No

10 Floor 2 - Porch



Max Dimensions: 5'4" x 8'11"
Calculated Area: 36 sq. ft
Included: No

Heated: No
Finished: No
Enclosed: No
Contiguous: Yes
Permitted: Yes
Wet space: No
Addition: No
Conversion: No

11 Floor 2 - Hall



Max Dimensions: 3'10" x 4'2"
Calculated Area: 16 sq. ft
Included: Yes

Heated: Yes
Finished: Yes
Enclosed: Yes
Contiguous: Yes
Permitted: Yes
Wet space: No
Addition: No
Conversion: No

501 Harbor Ridge Drive, Goodview, Bedford County, Virginia,
United States, 24095

12 Floor 2 - Living Room



Max Dimensions: 17'8" x 17'8"
Calculated Area: 287 sq. ft
Included: Yes

Heated: Yes
Finished: Yes
Enclosed: Yes
Contiguous: Yes
Permitted: Yes
Wet space: No
Addition: No
Conversion: No

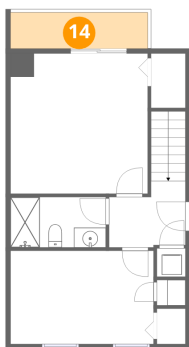
13 Floor 2 - Balcony



Max Dimensions: 17'9" x 7'6"
Calculated Area: 133 sq. ft
Included: No

Heated: No
Finished: No
Enclosed: No
Contiguous: Yes
Permitted: Yes
Wet space: No
Addition: No
Conversion: No

14 Floor 3 - Balcony

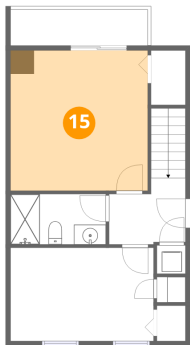


Max Dimensions: 13'10" x 3'7"
Calculated Area: 50 sq. ft
Included: No

Heated: No
Finished: No
Enclosed: No
Contiguous: Yes
Permitted: Yes
Wet space: No
Addition: No
Conversion: No

501 Harbor Ridge Drive, Goodview, Bedford County, Virginia,
United States, 24095

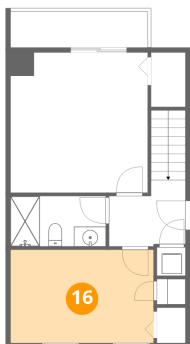
15 Floor 3 - Bedroom



Max Dimensions: 13'10" x 14'2"
Calculated Area: 196 sq. ft
Included: Yes

Heated: Yes
Finished: Yes
Enclosed: Yes
Contiguous: Yes
Permitted: Yes
Wet space: No
Addition: No
Conversion: No

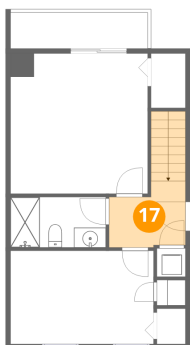
16 Floor 3 - Bedroom



Max Dimensions: 14'5" x 9'5"
Calculated Area: 136 sq. ft
Included: Yes

Heated: Yes
Finished: Yes
Enclosed: Yes
Contiguous: Yes
Permitted: Yes
Wet space: No
Addition: No
Conversion: No

17 Floor 3 - Hall

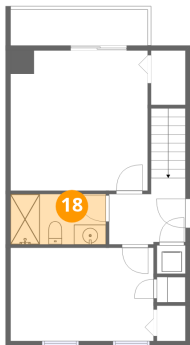


Max Dimensions: 7'8" x 6'5"
Calculated Area: 68 sq. ft
Included: Yes

Heated: Yes
Finished: Yes
Enclosed: Yes
Contiguous: Yes
Permitted: Yes
Wet space: No
Addition: No
Conversion: No

501 Harbor Ridge Drive, Goodview, Bedford County, Virginia,
United States, 24095

18 Floor 3 - Bath



Max Dimensions: 9'7" x 5'1"
Calculated Area: 49 sq. ft
Included: Yes

Heated: Yes
Finished: Yes
Enclosed: Yes
Contiguous: Yes
Permitted: Yes
Wet space: Yes
Addition: No
Conversion: No