

Home data report

1226 Highridge Pkwy, Westchester, IL, US



Total Area: 928 sq. ft

Basement: 0 sq. ft, 1st Floor: 464 sq. ft, 2nd Floor: 464 sq. ft

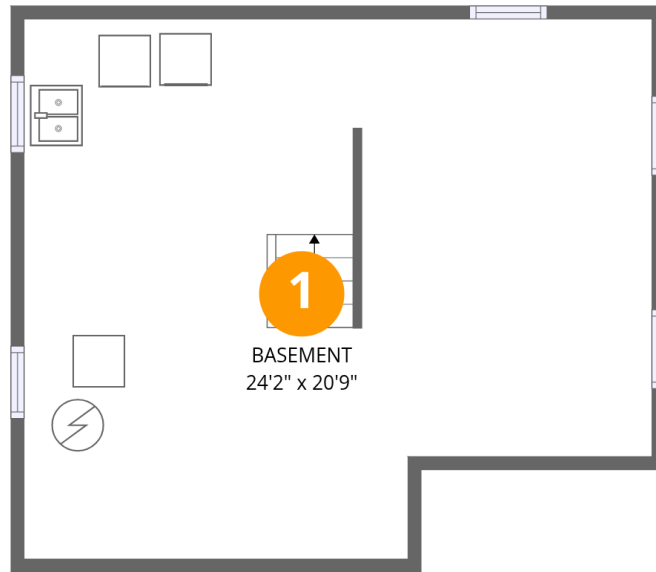
Excluded: Basement 464 sq. ft, Patio 141 sq. ft, Walls: 138 sq. ft

Property summary

 **3** Floors

 **2** Bedrooms

 **1** Bathrooms



Room dimensions

Floor 1 Below grade

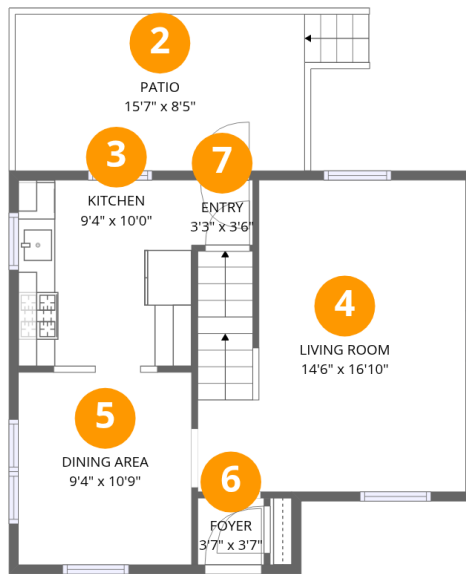
Total: 0sqft

Excluded: 464sqft

#		Dimensions	sqft	Counted as living area
1	Basement	24'2" x 20'9"	501 sq. ft	No

Home data report

1226 Highridge Pkwy, Westchester, IL, US



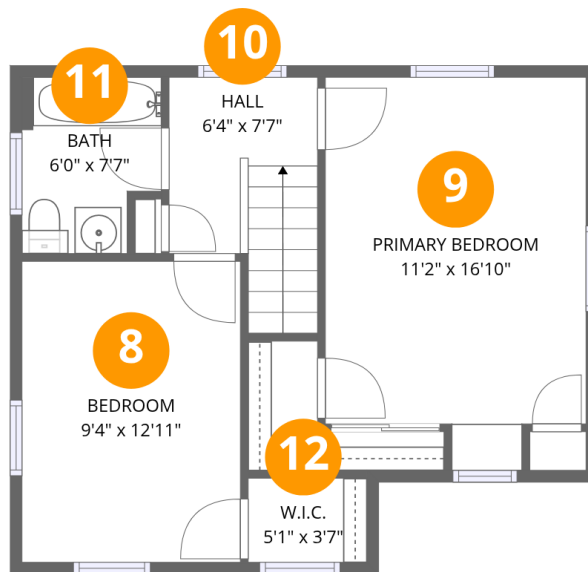
Room dimensions

Floor 2

Total:464sqft

Excluded: 141sqft

#		Dimensions	sqft	Counted as living area
2	Patio	15'7" x 8'5"	131 sq. ft	No
3	Kitchen	9'4" x 10'0"	93 sq. ft	Yes
4	Living Room	14'6" x 16'10"	243 sq. ft	Yes
5	Dining Area	9'4" x 10'9"	100 sq. ft	Yes
6	Foyer	3'7" x 3'7"	13 sq. ft	Yes
7	Entry	3'3" x 3'6"	11 sq. ft	Yes



Room dimensions

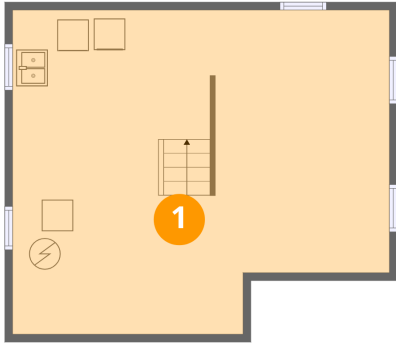
Floor 3

Total:464sqft

Excluded: 0sqft

#		Dimensions	sqft	Counted as living area
8	Bedroom	9'4" x 12'11"	121 sq. ft	Yes
9	Primary Bedroom	11'2" x 16'10"	188 sq. ft	Yes
10	Hall	6'4" x 7'7"	48 sq. ft	Yes
11	Bath	6'0" x 7'7"	45 sq. ft	Yes
12	W.I.C.	5'1" x 3'7"	18 sq. ft	Yes

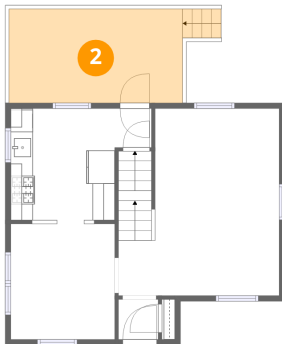
1 Floor 1 - Basement



Dimensions: 24'2" x 20'9"
Area: 501 sq. ft
Counted as living area: No

Heated: Yes
Finished: No
Enclosed: Yes
Contiguous: Yes
Permitted: Yes
Wet space: No
Addition: No
Conversion: No

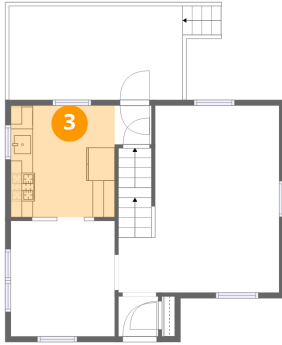
2 Floor 2 - Patio



Dimensions: 15'7" x 8'5"
Area: 131 sq. ft
Counted as living area: No

Heated: No
Finished: No
Enclosed: No
Contiguous: Yes
Permitted: Yes
Wet space: No
Addition: No
Conversion: No

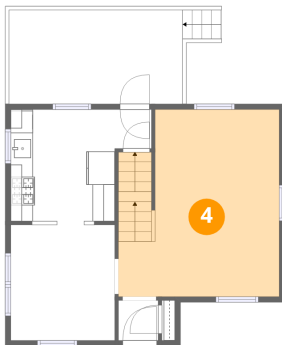
3 Floor 2 - Kitchen



Dimensions: 9'4" x 10'0"
Area: 93 sq. ft
Counted as living area: Yes

Heated: Yes
Finished: Yes
Enclosed: Yes
Contiguous: Yes
Permitted: Yes
Wet space: No
Addition: No
Conversion: No

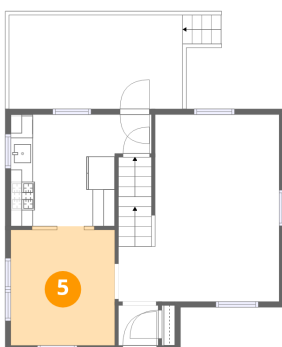
4 Floor 2 - Living Room



Dimensions: 14'6" x 16'10"
Area: 243 sq. ft
Counted as living area: Yes

Heated: Yes
Finished: Yes
Enclosed: Yes
Contiguous: Yes
Permitted: Yes
Wet space: No
Addition: No
Conversion: No

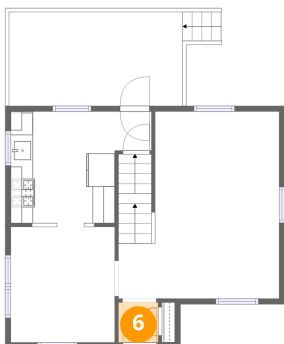
5 Floor 2 - Dining Area



Dimensions: 9'4" x 10'9"
Area: 100 sq. ft
Counted as living area: Yes

Heated: Yes
Finished: Yes
Enclosed: Yes
Contiguous: Yes
Permitted: Yes
Wet space: No
Addition: No
Conversion: No

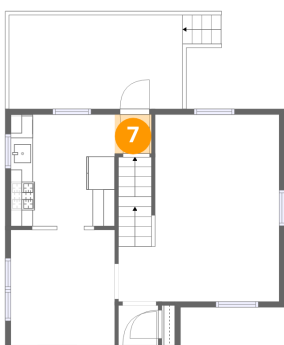
6 Floor 2 - Foyer



Dimensions: 3'7" x 3'7"
Area: 13 sq. ft
Counted as living area: Yes

Heated: Yes
Finished: Yes
Enclosed: Yes
Contiguous: Yes
Permitted: Yes
Wet space: No
Addition: No
Conversion: No

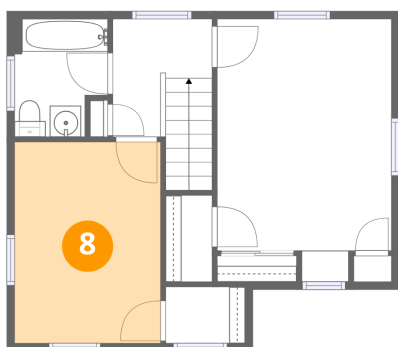
7 Floor 2 - Entry



Dimensions: 3'3" x 3'6"
Area: 11 sq. ft
Counted as living area: Yes

Heated: Yes
Finished: Yes
Enclosed: Yes
Contiguous: Yes
Permitted: Yes
Wet space: No
Addition: No
Conversion: No

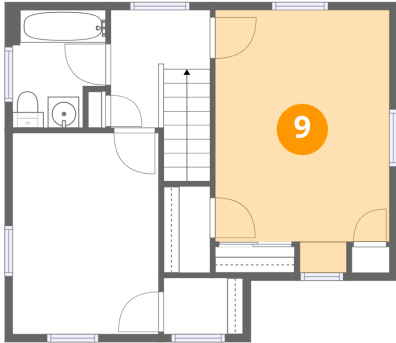
8 Floor 3 - Bedroom



Dimensions: 9'4" x 12'11"
Area: 121 sq. ft
Counted as living area: Yes

Heated: Yes
Finished: Yes
Enclosed: Yes
Contiguous: Yes
Permitted: Yes
Wet space: No
Addition: No
Conversion: No

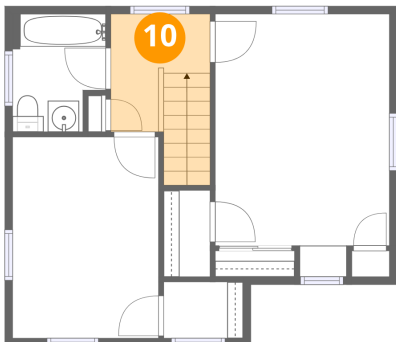
9 Floor 3 - Primary Bedroom



Dimensions: 11'2" x 16'10"
Area: 188 sq. ft
Counted as living area: Yes

Heated: Yes
Finished: Yes
Enclosed: Yes
Contiguous: Yes
Permitted: Yes
Wet space: No
Addition: No
Conversion: No

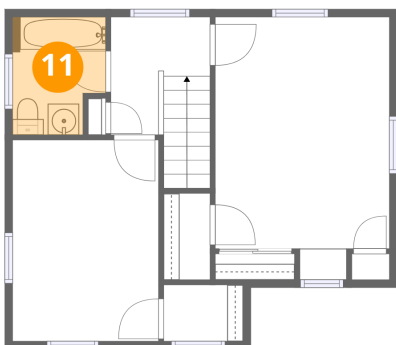
10 Floor 3 - Hall



Dimensions: 6'4" x 7'7"
Area: 48 sq. ft
Counted as living area: Yes

Heated: Yes
Finished: Yes
Enclosed: Yes
Contiguous: Yes
Permitted: Yes
Wet space: No
Addition: No
Conversion: No

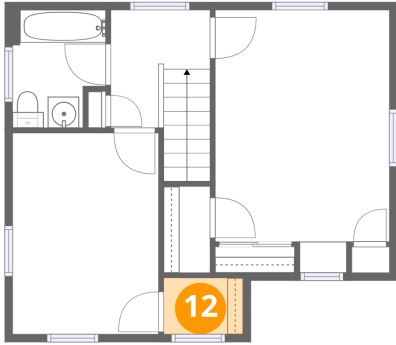
11 Floor 3 - Bath



Dimensions: 6'0" x 7'7"
Area: 45 sq. ft
Counted as living area: Yes

Heated: Yes
Finished: Yes
Enclosed: Yes
Contiguous: Yes
Permitted: Yes
Wet space: Yes
Addition: No
Conversion: No

12 Floor 3 - W.I.C.



Dimensions: 5'1" x 3'7"
Area: 18 sq. ft
Counted as living area: Yes

Heated: Yes
Finished: Yes
Enclosed: Yes
Contiguous: Yes
Permitted: Yes
Wet space: No
Addition: No
Conversion: No