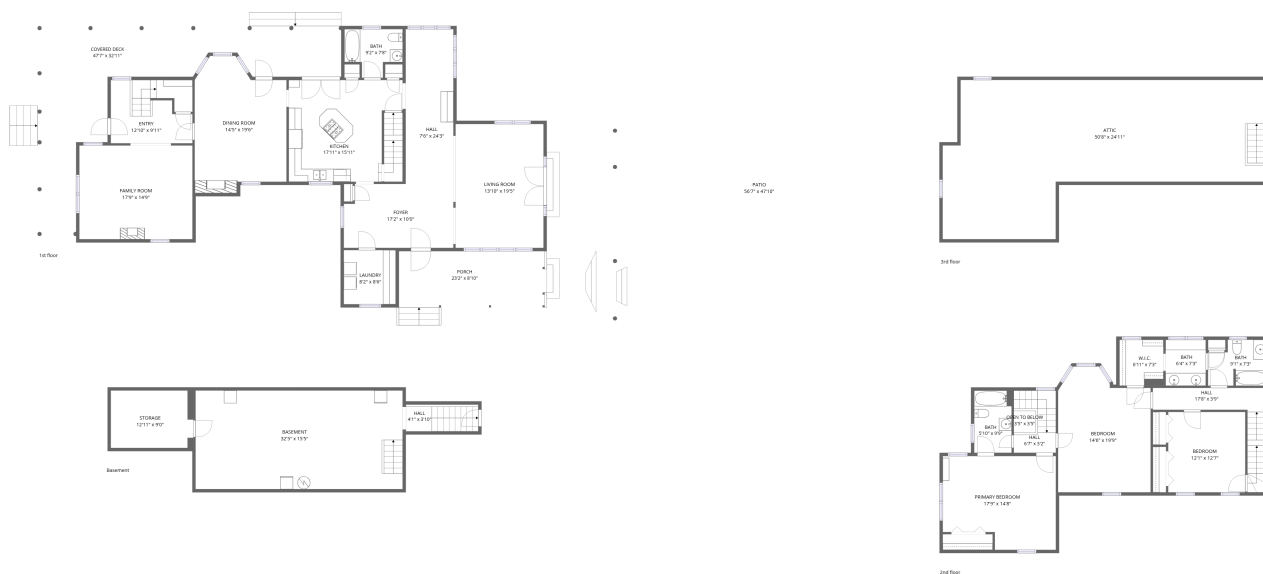


# Home data report

## 171 Laurel Grove Rd, Winchester, VA, US



### Total Area: 2860 sq. ft

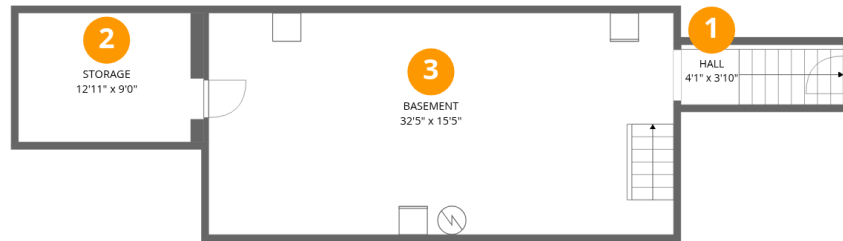
Basement: 0 sq. ft, 1st Floor: 1744 sq. ft, 2nd Floor: 1116 sq. ft, 3rd Floor: 0 sq. ft  
Excluded: Basement 508 sq. ft, Storage 117 sq. ft, Hall 48 sq. ft, Patio 2577 sq. ft,  
Covered deck 556 sq. ft, Porch 221 sq. ft, Open to below 12 sq. ft, Low ceiling 467 sq. ft,  
Attic 473 sq. ft, Walls: 364 sq. ft

### Property summary

 **4** Floors

 **3** Bedrooms

 **3** Bathrooms



## Room dimensions

Floor 1 Below grade

Total: 0sqft

Excluded: 673sqft

#		Dimensions	sqft	Counted as living area
1	Hall	4'1" x 3'10"	16 sq. ft	No
2	Storage	12'11" x 9'0"	116 sq. ft	No
3	Basement	32'5" x 15'5"	501 sq. ft	No



## Room dimensions

Floor 2

Total:1744sqft

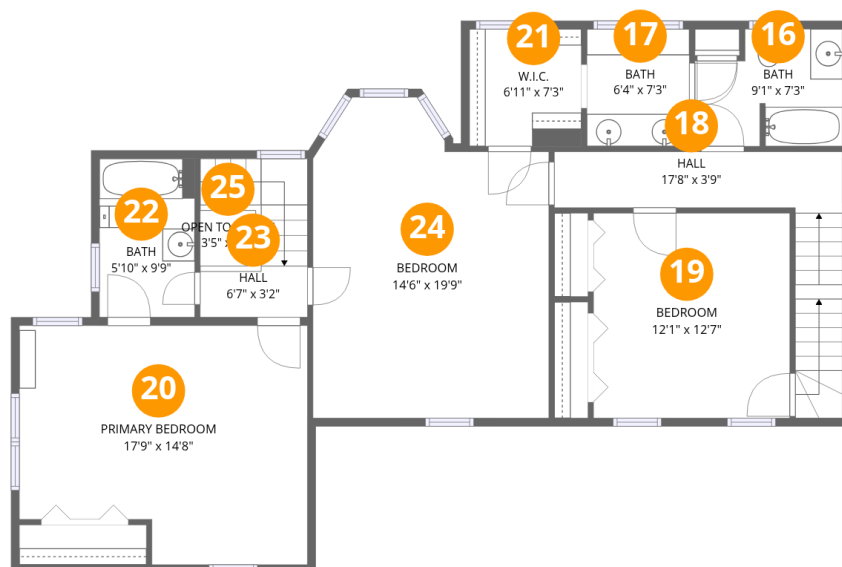
Excluded: 3354sqft

#		Dimensions	sqft	Counted as living area
4	Laundry	8'2" x 8'6"	69 sq. ft	Yes
5	Dining Room	14'5" x 19'6"	281 sq. ft	Yes
6	Bath	9'2" x 7'8"	70 sq. ft	Yes
7	Hall	7'6" x 24'3"	181 sq. ft	Yes
8	Entry	12'10" x 9'11"	127 sq. ft	Yes
9	Living Room	13'10" x 19'5"	268 sq. ft	Yes
10	Covered Deck	47'7" x 32'11"	1566 sq. ft	No
11	Porch	23'2" x 8'10"	205 sq. ft	No
12	Family Room	17'9" x 14'9"	261 sq. ft	Yes
13	Foyer	17'2" x 10'0"	173 sq. ft	Yes
14	Kitchen	17'11" x 15'11"	285 sq. ft	Yes

Home data report

**171 Laurel Grove Rd, Winchester, VA, US**

#		Dimensions	sqft	Counted as living area
15	Patio	56'7" x 47'10"	2705 sq. ft	No

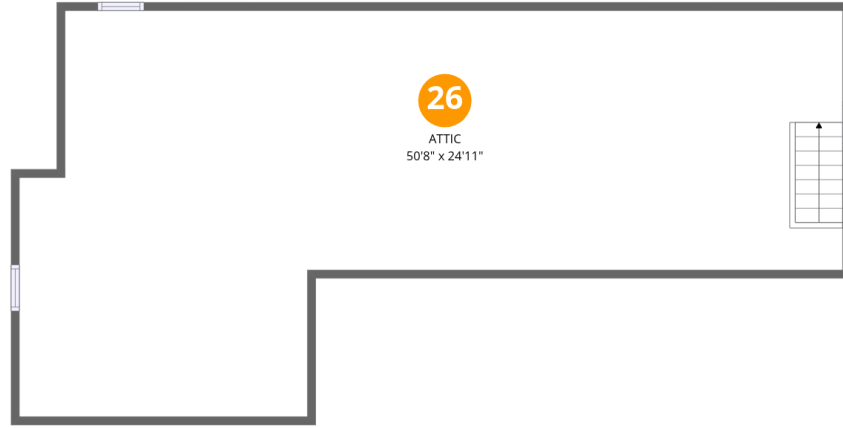


## Room dimensions

Floor 3

Total:1116sqft Excluded: 12sqft

#		Dimensions	sqft	Counted as living area
16	Bath	9'1" x 7'3"	65 sq. ft	Yes
17	Bath	6'4" x 7'3"	46 sq. ft	Yes
18	Hall	17'8" x 3'9"	66 sq. ft	Yes
19	Bedroom	12'1" x 12'7"	152 sq. ft	Yes
20	Primary Bedroom	17'9" x 14'8"	261 sq. ft	Yes
21	W.I.C.	6'11" x 7'3"	50 sq. ft	Yes
22	Bath	5'10" x 9'9"	57 sq. ft	Yes
23	Hall	6'7" x 3'2"	21 sq. ft	Yes
24	Bedroom	14'6" x 19'9"	286 sq. ft	Yes
25	Open To Below	3'5" x 3'5"	12 sq. ft	No



## Room dimensions

Floor 4

Total: 0sqft

Excluded: 940sqft

#		Dimensions	sqft	Counted as living area
26	Attic	50'8" x 24'11"	1264 sq. ft	No

## 1 Floor 1 - Hall

---



Dimensions: 4'1" x 3'10"  
Area: 16 sq. ft  
Counted as living area: No

Heated: Yes  
Finished: No  
Enclosed: Yes  
Contiguous: Yes  
Permitted: Yes  
Wet space: No  
Addition: No  
Conversion: No

## 2 Floor 1 - Storage

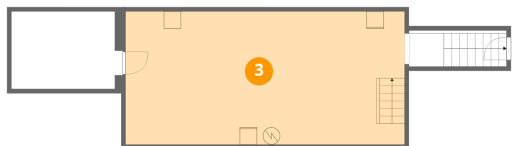
---



Dimensions: 12'11" x 9'0"  
Area: 116 sq. ft  
Counted as living area: No

Heated: No  
Finished: No  
Enclosed: No  
Contiguous: Yes  
Permitted: Yes  
Wet space: No  
Addition: No  
Conversion: No

### 3 Floor 1 - Basement



Dimensions: 32'5" x 15'5"  
Area: 501 sq. ft  
Counted as living area: No

Heated: Yes  
Finished: No  
Enclosed: Yes  
Contiguous: Yes  
Permitted: Yes  
Wet space: No  
Addition: No  
Conversion: No

### 4 Floor 2 - Laundry



Dimensions: 8'2" x 8'6"  
Area: 69 sq. ft  
Counted as living area: Yes

Heated: Yes  
Finished: Yes  
Enclosed: Yes  
Contiguous: Yes  
Permitted: Yes  
Wet space: No  
Addition: No  
Conversion: No

### 5 Floor 2 - Dining Room



Dimensions: 14'5" x 19'6"  
Area: 281 sq. ft  
Counted as living area: Yes

Heated: Yes  
Finished: Yes  
Enclosed: Yes  
Contiguous: Yes  
Permitted: Yes  
Wet space: No  
Addition: No  
Conversion: No

## 6 Floor 2 - Bath



Dimensions: 9'2" x 7'8"  
Area: 70 sq. ft  
Counted as living area: Yes

Heated: Yes  
Finished: Yes  
Enclosed: Yes  
Contiguous: Yes  
Permitted: Yes  
Wet space: Yes  
Addition: No  
Conversion: No

## 7 Floor 2 - Hall



Dimensions: 7'6" x 24'3"  
Area: 181 sq. ft  
Counted as living area: Yes

Heated: Yes  
Finished: Yes  
Enclosed: Yes  
Contiguous: Yes  
Permitted: Yes  
Wet space: No  
Addition: No  
Conversion: No

## 8 Floor 2 - Entry



Dimensions: 12'10" x 9'11"  
Area: 127 sq. ft  
Counted as living area: Yes

Heated: Yes  
Finished: Yes  
Enclosed: Yes  
Contiguous: Yes  
Permitted: Yes  
Wet space: No  
Addition: No  
Conversion: No

## 9 Floor 2 - Living Room



Dimensions: 13'10" x 19'5"  
Area: 268 sq. ft  
Counted as living area: Yes

Heated: Yes  
Finished: Yes  
Enclosed: Yes  
Contiguous: Yes  
Permitted: Yes  
Wet space: No  
Addition: No  
Conversion: No

## 10 Floor 2 - Covered Deck



Dimensions: 47'7" x 32'11"  
Area: 1566 sq. ft  
Counted as living area: No

Heated: No  
Finished: No  
Enclosed: No  
Contiguous: Yes  
Permitted: Yes  
Wet space: No  
Addition: No  
Conversion: No

## 11 Floor 2 - Porch



Dimensions: 23'2" x 8'10"  
Area: 205 sq. ft  
Counted as living area: No

Heated: No  
Finished: No  
Enclosed: No  
Contiguous: Yes  
Permitted: Yes  
Wet space: No  
Addition: No  
Conversion: No

## 12 Floor 2 - Family Room



Dimensions: 17'9" x 14'9"  
Area: 261 sq. ft  
Counted as living area: Yes

Heated: Yes  
Finished: Yes  
Enclosed: Yes  
Contiguous: Yes  
Permitted: Yes  
Wet space: No  
Addition: No  
Conversion: No

## 13 Floor 2 - Foyer



Dimensions: 17'2" x 10'0"  
Area: 173 sq. ft  
Counted as living area: Yes

Heated: Yes  
Finished: Yes  
Enclosed: Yes  
Contiguous: Yes  
Permitted: Yes  
Wet space: No  
Addition: No  
Conversion: No

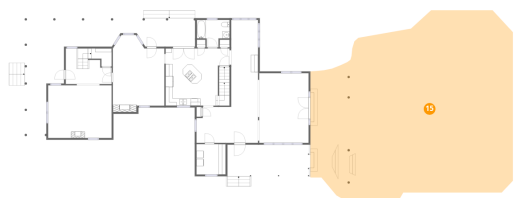
## 14 Floor 2 - Kitchen



Dimensions: 17'11" x 15'11"  
Area: 285 sq. ft  
Counted as living area: Yes

Heated: Yes  
Finished: Yes  
Enclosed: Yes  
Contiguous: Yes  
Permitted: Yes  
Wet space: No  
Addition: No  
Conversion: No

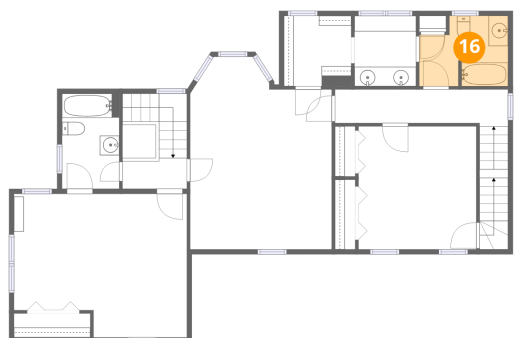
### 15 Floor 2 - Patio



Dimensions: 56'7" x 47'10"  
Area: 2705 sq. ft  
Counted as living area: No

Heated: No  
Finished: No  
Enclosed: No  
Contiguous: Yes  
Permitted: Yes  
Wet space: No  
Addition: No  
Conversion: No

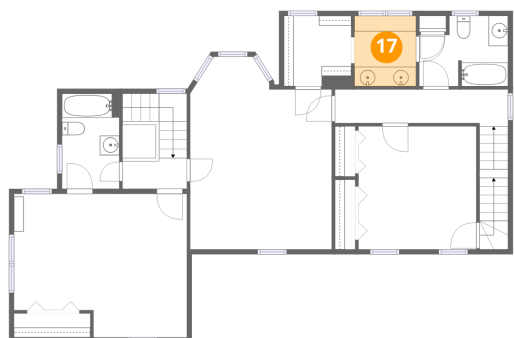
### 16 Floor 3 - Bath



Dimensions: 9'1" x 7'3"  
Area: 65 sq. ft  
Counted as living area: Yes

Heated: Yes  
Finished: Yes  
Enclosed: Yes  
Contiguous: Yes  
Permitted: Yes  
Wet space: Yes  
Addition: No  
Conversion: No

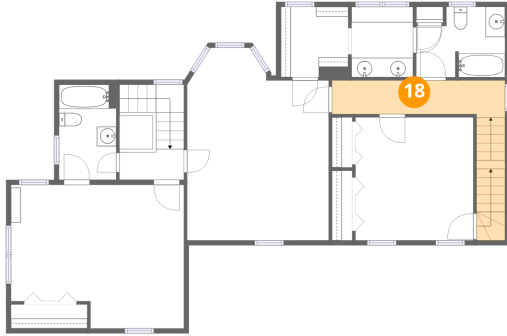
### 17 Floor 3 - Bath



Dimensions: 6'4" x 7'3"  
Area: 46 sq. ft  
Counted as living area: Yes

Heated: Yes  
Finished: Yes  
Enclosed: Yes  
Contiguous: Yes  
Permitted: Yes  
Wet space: Yes  
Addition: No  
Conversion: No

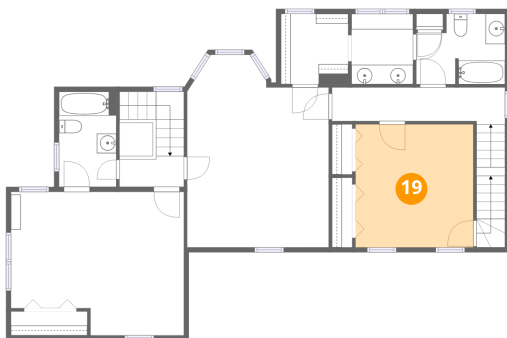
**18** Floor 3 - Hall



Dimensions: 17'8" x 3'9"  
Area: 66 sq. ft  
Counted as living area: Yes

Heated: Yes  
Finished: Yes  
Enclosed: Yes  
Contiguous: Yes  
Permitted: Yes  
Wet space: No  
Addition: No  
Conversion: No

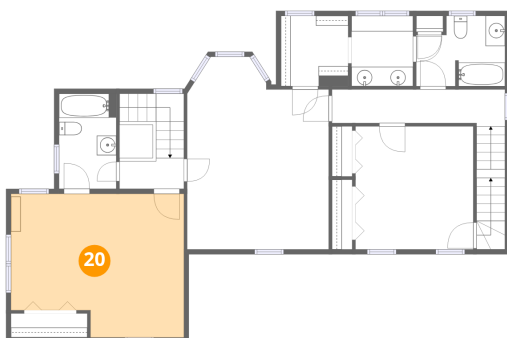
**19** Floor 3 - Bedroom



Dimensions: 12'1" x 12'7"  
Area: 152 sq. ft  
Counted as living area: Yes

Heated: Yes  
Finished: Yes  
Enclosed: Yes  
Contiguous: Yes  
Permitted: Yes  
Wet space: No  
Addition: No  
Conversion: No

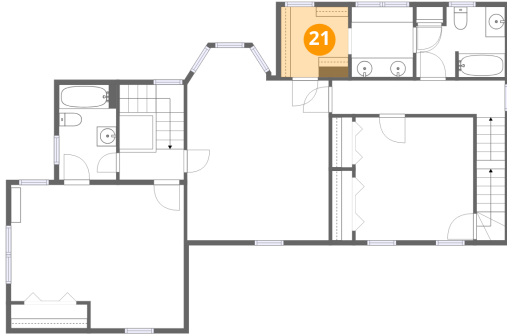
**20** Floor 3 - Primary Bedroom



Dimensions: 17'9" x 14'8"  
Area: 261 sq. ft  
Counted as living area: Yes

Heated: Yes  
Finished: Yes  
Enclosed: Yes  
Contiguous: Yes  
Permitted: Yes  
Wet space: No  
Addition: No  
Conversion: No

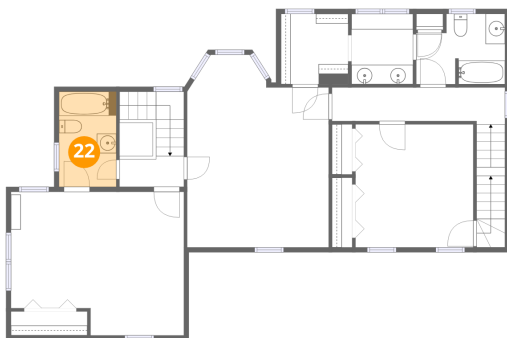
**21** Floor 3 - W.I.C.



Dimensions: 6'11" x 7'3"  
Area: 50 sq. ft  
Counted as living area: Yes

Heated: Yes  
Finished: Yes  
Enclosed: Yes  
Contiguous: Yes  
Permitted: Yes  
Wet space: No  
Addition: No  
Conversion: No

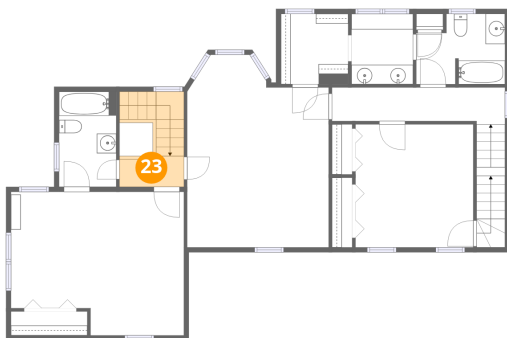
**22** Floor 3 - Bath



Dimensions: 5'10" x 9'9"  
Area: 57 sq. ft  
Counted as living area: Yes

Heated: Yes  
Finished: Yes  
Enclosed: Yes  
Contiguous: Yes  
Permitted: Yes  
Wet space: Yes  
Addition: No  
Conversion: No

**23** Floor 3 - Hall



Dimensions: 6'7" x 3'2"  
Area: 21 sq. ft  
Counted as living area: Yes

Heated: Yes  
Finished: Yes  
Enclosed: Yes  
Contiguous: Yes  
Permitted: Yes  
Wet space: No  
Addition: No  
Conversion: No

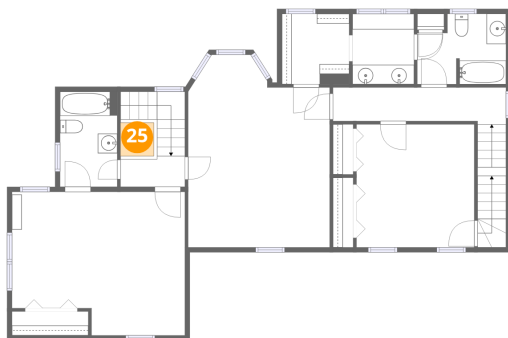
**24** Floor 3 - Bedroom



Dimensions: 14'6" x 19'9"  
Area: 286 sq. ft  
Counted as living area: Yes

Heated: Yes  
Finished: Yes  
Enclosed: Yes  
Contiguous: Yes  
Permitted: Yes  
Wet space: No  
Addition: No  
Conversion: No

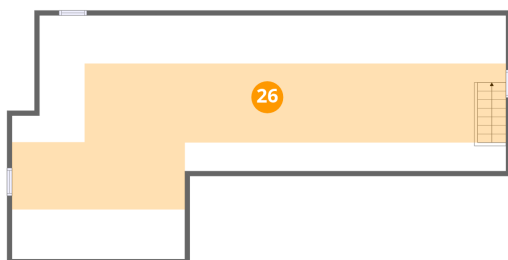
**25** Floor 3 - Open To Below



Dimensions: 3'5" x 3'5"  
Area: 12 sq. ft  
Counted as living area: No

Heated: No  
Finished: No  
Enclosed: No  
Contiguous: Yes  
Permitted: No  
Wet space: No  
Addition: No  
Conversion: No

**26** Floor 4 - Attic



Dimensions: 50'8" x 24'11"  
Area: 1264 sq. ft  
Counted as living area: No

Heated: No  
Finished: No  
Enclosed: Yes  
Contiguous: Yes  
Permitted: Yes  
Wet space: No  
Addition: No  
Conversion: No