

Home data report

20 Graham Street, Carleton Place, Lanark County, Ontario,
Canada, K7C 0H7



Total Area: 2674 sq. ft

Basement: 575 sq. ft, 1st Floor: 1028 sq. ft, 2nd Floor: 1071 sq. ft

Excluded: Utility 96 sq. ft, Storage 274 sq. ft, Garage 372 sq. ft, Fireplace 5 sq. ft, Open to below 227 sq. ft, Walls: 267 sq. ft

Property summary

 **3** Floors

 **4** Bedrooms

 **2** Bathrooms

Home data report

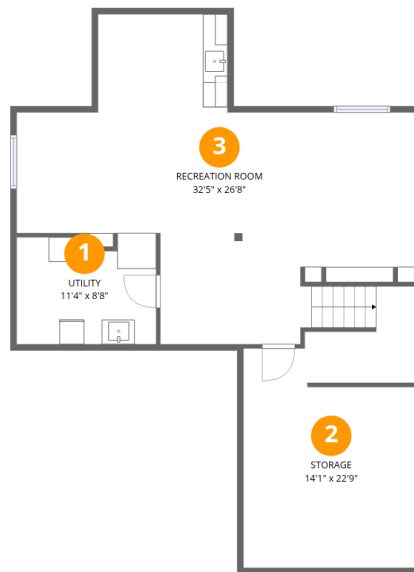
**20 Graham Street, Carleton Place, Lanark County, Ontario,
Canada, K7C 0H7**

 **1**
Half baths

 **1**
Garages

Home data report

20 Graham Street, Carleton Place, Lanark County, Ontario,
Canada, K7C 0H7



Room dimensions

Floor 1 Below grade

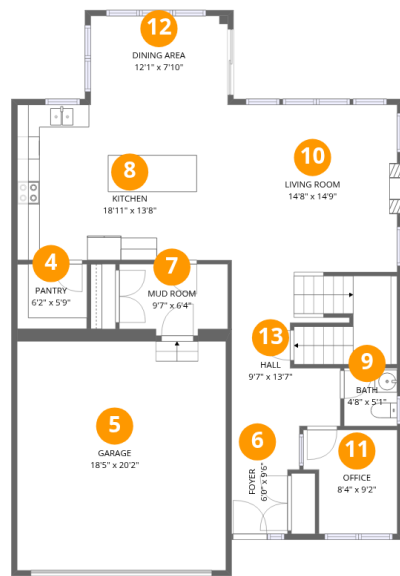
Total:575sqft

Excluded: 370sqft

| # | | Dimensions | sqft | Counted as living area |
|---|-----------------|---------------|------------|------------------------|
| 1 | Utility | 11'4" x 8'8" | 98 sq. ft | No |
| 2 | Storage | 14'1" x 22'9" | 320 sq. ft | No |
| 3 | Recreation Room | 32'5" x 26'8" | 866 sq. ft | Yes |

Home data report

20 Graham Street, Carleton Place, Lanark County, Ontario,
Canada, K7C 0H7



Room dimensions

Floor 2

Total:1028sqft

Excluded: 377sqft

| # | | Dimensions | sqft | Counted as living area |
|----|-------------|----------------|------------|------------------------|
| 4 | Pantry | 6'2" x 5'9" | 35 sq. ft | Yes |
| 5 | Garage | 18'5" x 20'2" | 372 sq. ft | No |
| 6 | Foyer | 6'0" x 9'6" | 57 sq. ft | Yes |
| 7 | Mud Room | 9'7" x 6'4" | 61 sq. ft | Yes |
| 8 | Kitchen | 18'11" x 13'8" | 259 sq. ft | Yes |
| 9 | Bath | 4'8" x 5'1" | 24 sq. ft | Yes |
| 10 | Living Room | 14'8" x 14'9" | 216 sq. ft | Yes |
| 11 | Office | 8'4" x 9'2" | 76 sq. ft | Yes |
| 12 | Dining Area | 12'1" x 7'10" | 95 sq. ft | Yes |
| 13 | Hall | 9'7" x 13'7" | 131 sq. ft | Yes |

Home data report

20 Graham Street, Carleton Place, Lanark County, Ontario, Canada, K7C 0H7



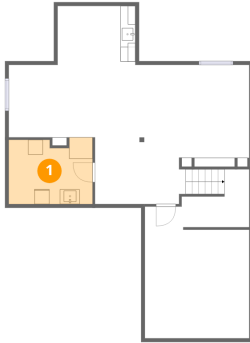
Room dimensions

Floor 3

Total:1071sqft Excluded: 227sqft

| # | | Dimensions | sqft | Counted as living area |
|----|-----------------|---------------|------------|------------------------|
| 14 | Open To Below | 14'7" x 19'3" | 281 sq. ft | No |
| 15 | W.I.C. | 7'11" x 5'4" | 42 sq. ft | Yes |
| 16 | Bedroom | 14'7" x 14'8" | 214 sq. ft | Yes |
| 17 | Hall | 4'7" x 9'8" | 44 sq. ft | Yes |
| 18 | Bedroom | 10'4" x 11'0" | 113 sq. ft | Yes |
| 19 | Bath | 8'8" x 5'9" | 50 sq. ft | Yes |
| 20 | Primary Bath | 6'2" x 13'9" | 84 sq. ft | Yes |
| 21 | Bedroom | 10'2" x 12'5" | 126 sq. ft | Yes |
| 22 | Primary Bedroom | 12'1" x 15'1" | 183 sq. ft | Yes |
| 23 | Hall | 18'9" x 5'7" | 105 sq. ft | Yes |
| 24 | Laundry | 7'9" x 6'7" | 51 sq. ft | Yes |

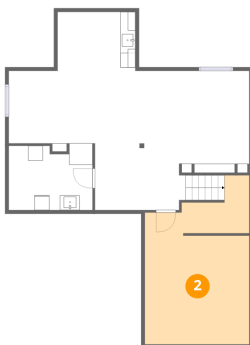
1 Floor 1 - Utility



Dimensions: 11'4" x 8'8"
Area: 98 sq. ft
Counted as living area: No

Heated: Yes
Finished: No
Enclosed: Yes
Contiguous: Yes
Permitted: Yes
Wet space: No
Addition: No
Conversion: No

2 Floor 1 - Storage

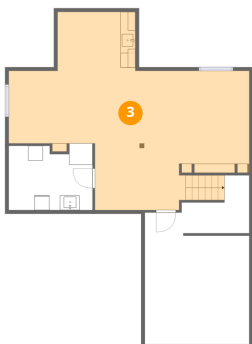


Dimensions: 14'1" x 22'9"
Area: 320 sq. ft
Counted as living area: No

Heated: No
Finished: No
Enclosed: No
Contiguous: Yes
Permitted: Yes
Wet space: No
Addition: No
Conversion: No

20 Graham Street, Carleton Place, Lanark County, Ontario,
Canada, K7C 0H7

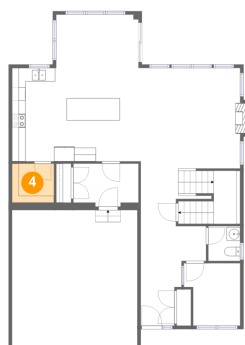
3 Floor 1 - Recreation Room



Dimensions: 32'5" x 26'8"
Area: 866 sq. ft
Counted as living area: Yes

Heated: Yes
Finished: Yes
Enclosed: Yes
Contiguous: Yes
Permitted: Yes
Wet space: No
Addition: No
Conversion: No

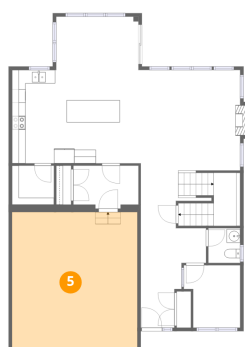
4 Floor 2 - Pantry



Dimensions: 6'2" x 5'9"
Area: 35 sq. ft
Counted as living area: Yes

Heated: Yes
Finished: Yes
Enclosed: Yes
Contiguous: Yes
Permitted: Yes
Wet space: No
Addition: No
Conversion: No

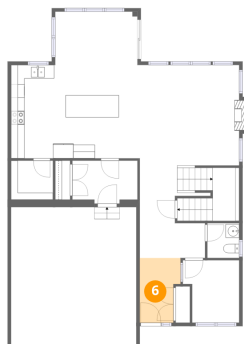
5 Floor 2 - Garage



Dimensions: 18'5" x 20'2"
Area: 372 sq. ft
Counted as living area: No

Heated: No
Finished: No
Enclosed: Yes
Contiguous: Yes
Permitted: Yes
Wet space: No
Addition: No
Conversion: No

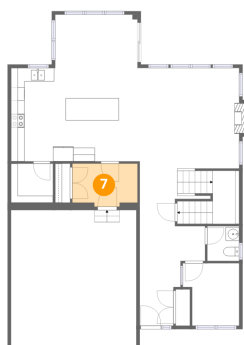
6 Floor 2 - Foyer



Dimensions: 6'0" x 9'6"
Area: 57 sq. ft
Counted as living area: Yes

Heated: Yes
Finished: Yes
Enclosed: Yes
Contiguous: Yes
Permitted: Yes
Wet space: No
Addition: No
Conversion: No

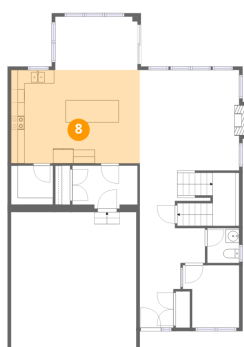
7 Floor 2 - Mud Room



Dimensions: 9'7" x 6'4"
Area: 61 sq. ft
Counted as living area: Yes

Heated: Yes
Finished: Yes
Enclosed: Yes
Contiguous: Yes
Permitted: Yes
Wet space: No
Addition: No
Conversion: No

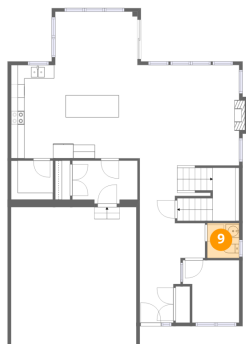
8 Floor 2 - Kitchen



Dimensions: 18'11" x 13'8"
Area: 259 sq. ft
Counted as living area: Yes

Heated: Yes
Finished: Yes
Enclosed: Yes
Contiguous: Yes
Permitted: Yes
Wet space: No
Addition: No
Conversion: No

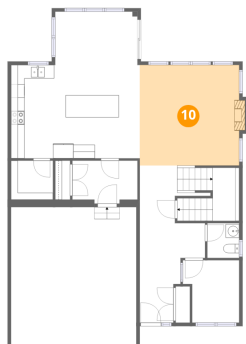
9 Floor 2 - Bath



Dimensions: 4'8" x 5'1"
Area: 24 sq. ft
Counted as living area: Yes

Heated: Yes
Finished: Yes
Enclosed: Yes
Contiguous: Yes
Permitted: Yes
Wet space: Yes
Addition: No
Conversion: No

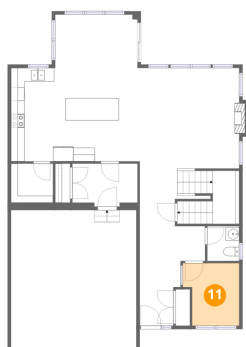
10 Floor 2 - Living Room



Dimensions: 14'8" x 14'9"
Area: 216 sq. ft
Counted as living area: Yes

Heated: Yes
Finished: Yes
Enclosed: Yes
Contiguous: Yes
Permitted: Yes
Wet space: No
Addition: No
Conversion: No

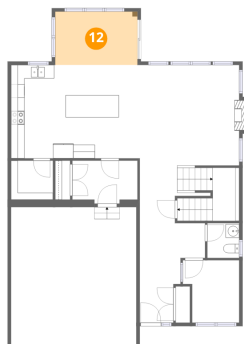
11 Floor 2 - Office



Dimensions: 8'4" x 9'2"
Area: 76 sq. ft
Counted as living area: Yes

Heated: Yes
Finished: Yes
Enclosed: Yes
Contiguous: Yes
Permitted: Yes
Wet space: No
Addition: No
Conversion: No

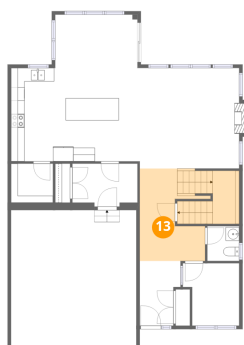
12 Floor 2 - Dining Area



Dimensions: 12'1" x 7'10"
Area: 95 sq. ft
Counted as living area: Yes

Heated: Yes
Finished: Yes
Enclosed: Yes
Contiguous: Yes
Permitted: Yes
Wet space: No
Addition: No
Conversion: No

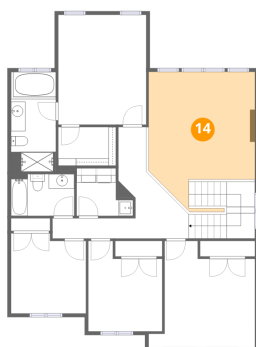
13 Floor 2 - Hall



Dimensions: 9'7" x 13'7"
Area: 131 sq. ft
Counted as living area: Yes

Heated: Yes
Finished: Yes
Enclosed: Yes
Contiguous: Yes
Permitted: Yes
Wet space: No
Addition: No
Conversion: No

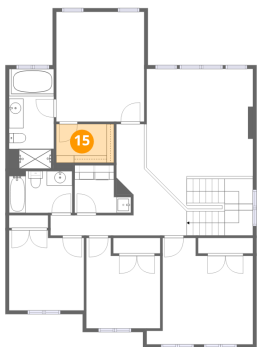
14 Floor 3 - Open To Below



Dimensions: 14'7" x 19'3"
Area: 281 sq. ft
Counted as living area: No

Heated: No
Finished: No
Enclosed: No
Contiguous: Yes
Permitted: No
Wet space: No
Addition: No
Conversion: No

15 Floor 3 - W.I.C.



Dimensions: 7'11" x 5'4"
Area: 42 sq. ft
Counted as living area: Yes

Heated: Yes
Finished: Yes
Enclosed: Yes
Contiguous: Yes
Permitted: Yes
Wet space: No
Addition: No
Conversion: No

16 Floor 3 - Bedroom



Dimensions: 14'7" x 14'8"
Area: 214 sq. ft
Counted as living area: Yes

Heated: Yes
Finished: Yes
Enclosed: Yes
Contiguous: Yes
Permitted: Yes
Wet space: No
Addition: No
Conversion: No

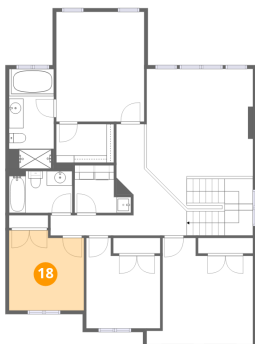
17 Floor 3 - Hall



Dimensions: 4'7" x 9'8"
Area: 44 sq. ft
Counted as living area: Yes

Heated: Yes
Finished: Yes
Enclosed: Yes
Contiguous: Yes
Permitted: Yes
Wet space: No
Addition: No
Conversion: No

18 Floor 3 - Bedroom



Dimensions: 10'4" x 11'0"
Area: 113 sq. ft
Counted as living area: Yes

Heated: Yes
Finished: Yes
Enclosed: Yes
Contiguous: Yes
Permitted: Yes
Wet space: No
Addition: No
Conversion: No

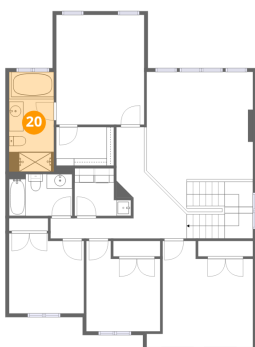
19 Floor 3 - Bath



Dimensions: 8'8" x 5'9"
Area: 50 sq. ft
Counted as living area: Yes

Heated: Yes
Finished: Yes
Enclosed: Yes
Contiguous: Yes
Permitted: Yes
Wet space: Yes
Addition: No
Conversion: No

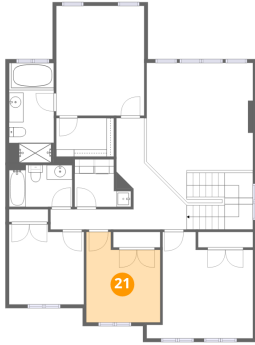
20 Floor 3 - Primary Bath



Dimensions: 6'2" x 13'9"
Area: 84 sq. ft
Counted as living area: Yes

Heated: Yes
Finished: Yes
Enclosed: Yes
Contiguous: Yes
Permitted: Yes
Wet space: Yes
Addition: No
Conversion: No

21 Floor 3 - Bedroom



Dimensions: 10'2" x 12'5"
Area: 126 sq. ft
Counted as living area: Yes

Heated: Yes
Finished: Yes
Enclosed: Yes
Contiguous: Yes
Permitted: Yes
Wet space: No
Addition: No
Conversion: No

22 Floor 3 - Primary Bedroom



Dimensions: 12'1" x 15'1"
Area: 183 sq. ft
Counted as living area: Yes

Heated: Yes
Finished: Yes
Enclosed: Yes
Contiguous: Yes
Permitted: Yes
Wet space: No
Addition: No
Conversion: No

23 Floor 3 - Hall



Dimensions: 18'9" x 5'7"
Area: 105 sq. ft
Counted as living area: Yes

Heated: Yes
Finished: Yes
Enclosed: Yes
Contiguous: Yes
Permitted: Yes
Wet space: No
Addition: No
Conversion: No

Home data report

20 Graham Street, Carleton Place, Lanark County, Ontario,
Canada, K7C 0H7

24 Floor 3 - Laundry



Dimensions: 7'9" x 6'7"
Area: 51 sq. ft
Counted as living area: Yes

Heated: Yes
Finished: Yes
Enclosed: Yes
Contiguous: Yes
Permitted: Yes
Wet space: No
Addition: No
Conversion: No