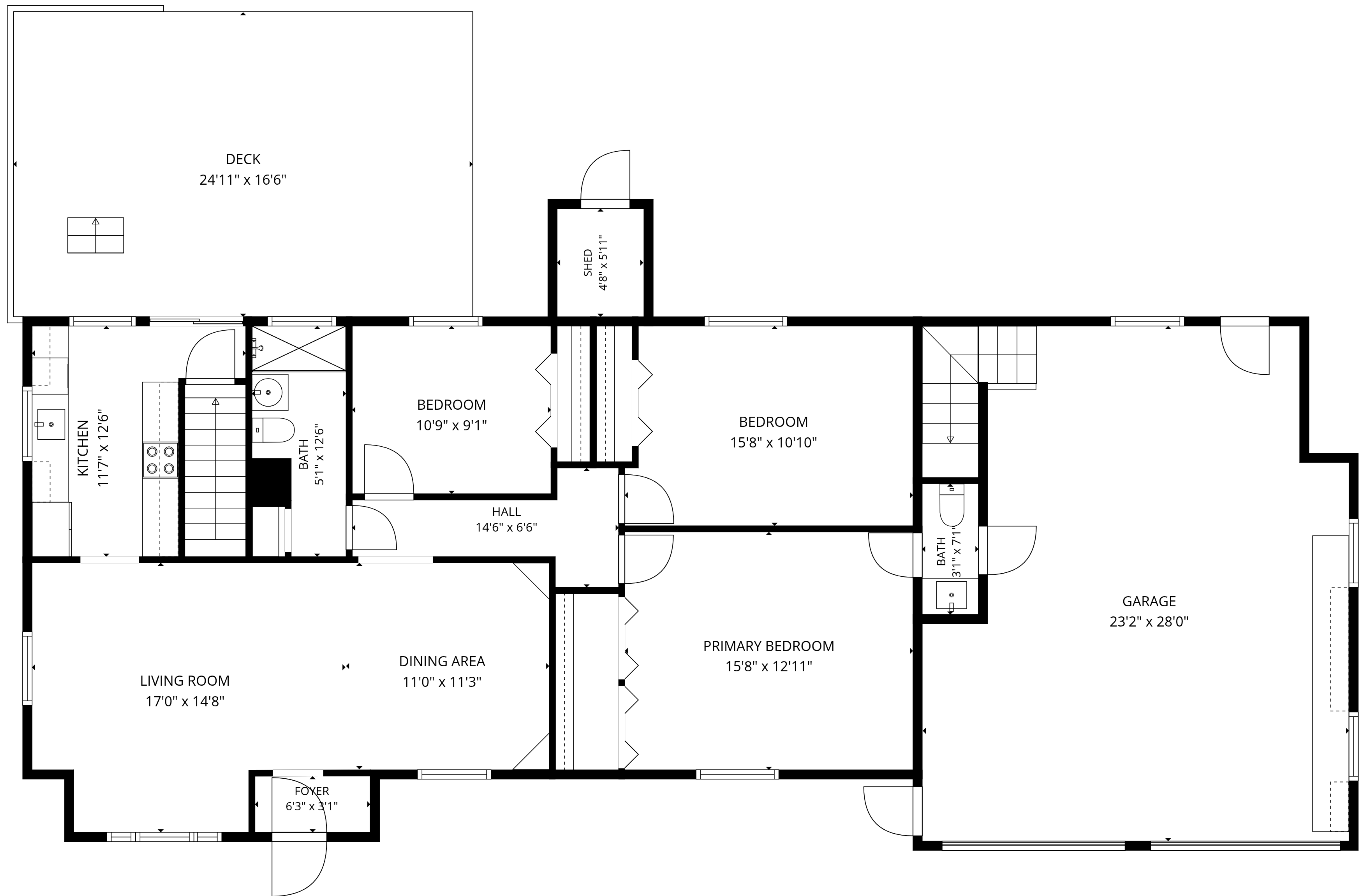


BONUS ROOM
28'1" x 27'6"

TOTAL: 2349 sq. ft

Basement: 805 sq. ft, 1st floor: 1238 sq. ft, 2nd floor: 306 sq. ft
EXCLUDED AREAS: GARAGE: 598 sq. ft, SHED: 28 sq. ft, DECK: 413 sq. ft,
LOW CEILING: 103 sq. ft, WALLS: 231 sq. ft



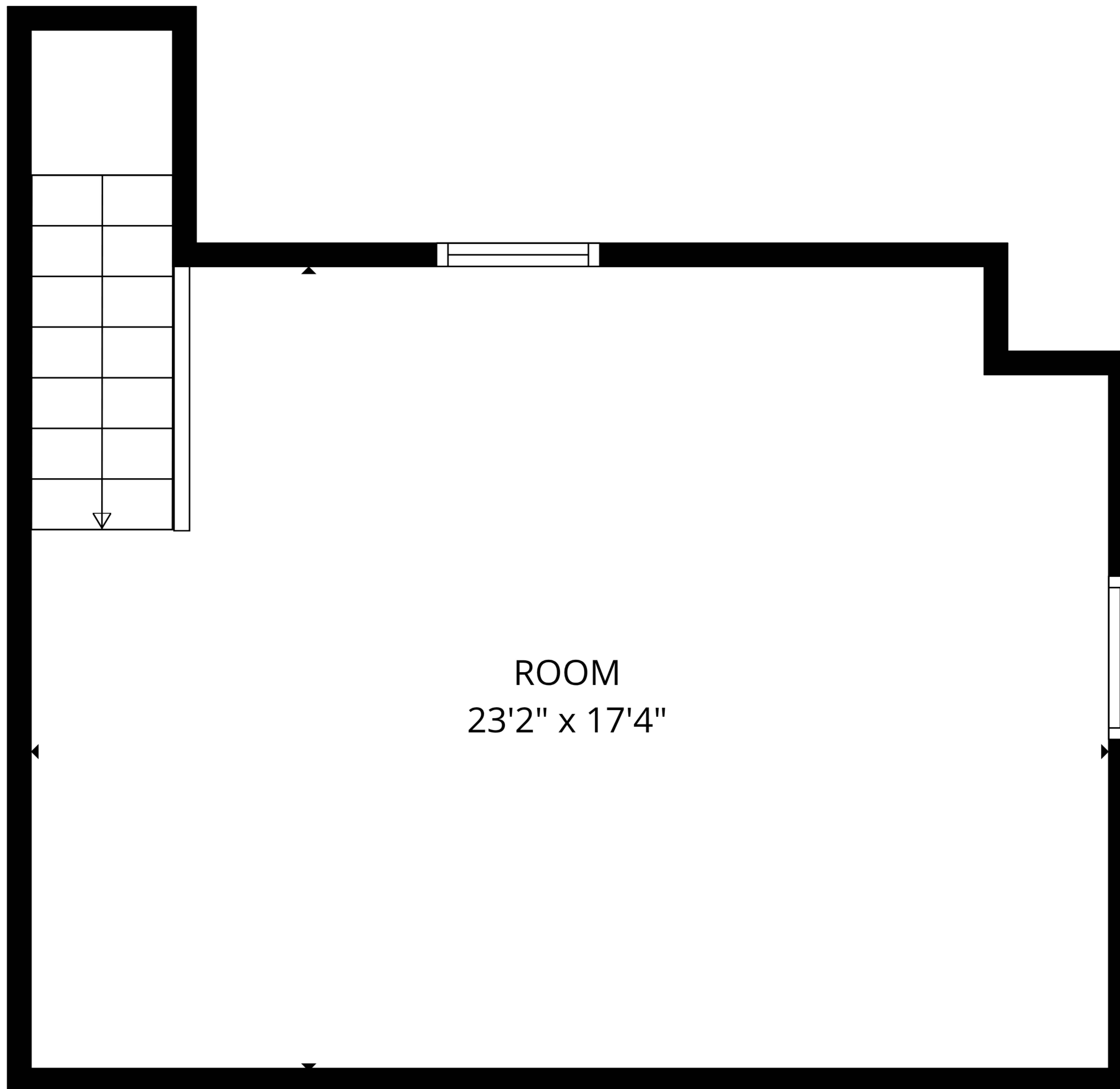
TOTAL: 2349 sq. ft

Basement: 805 sq. ft, 1st floor: 1238 sq. ft, 2nd floor: 306 sq. ft

EXCLUDED AREAS: GARAGE: 598 sq. ft, SHED: 28 sq. ft, DECK: 413 sq. ft,

LOW CEILING: 103 sq. ft, WALLS: 231 sq. ft



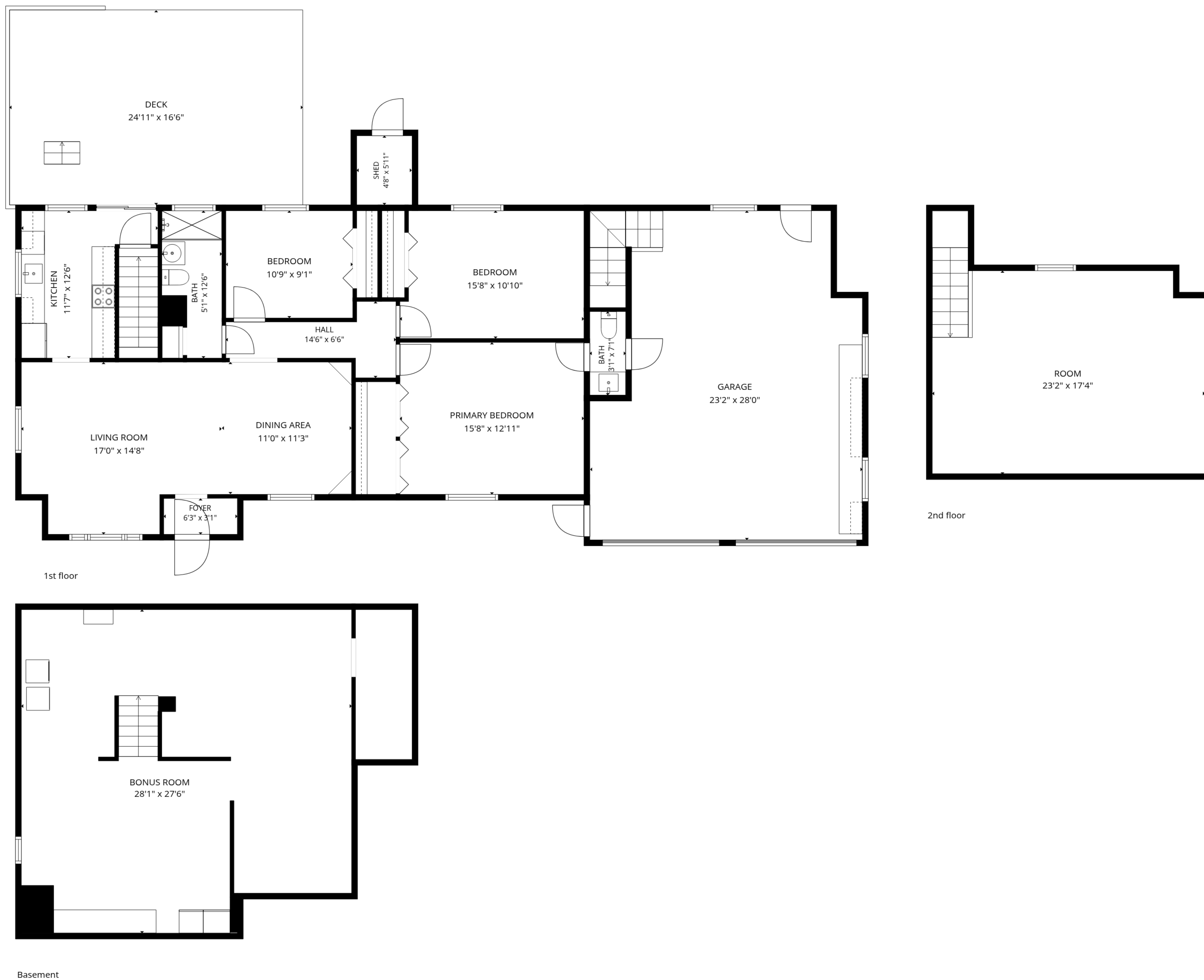


ROOM
23'2" x 17'4"

TOTAL: 2349 sq. ft

Basement: 805 sq. ft, 1st floor: 1238 sq. ft, 2nd floor: 306 sq. ft
EXCLUDED AREAS: GARAGE: 598 sq. ft, SHED: 28 sq. ft, DECK: 413 sq. ft,
LOW CEILING: 103 sq. ft, WALLS: 231 sq. ft





TOTAL: 2349 sq. ft

Basement: 805 sq. ft, 1st floor: 1238 sq. ft, 2nd floor: 306 sq. ft
 EXCLUDED AREAS: GARAGE: 598 sq. ft, SHED: 28 sq. ft, DECK: 413 sq. ft,
 LOW CEILING: 103 sq. ft, WALLS: 231 sq. ft

