

Home data report

7811 S County Rd 13, Fort Collins, CO, US



Total Area: 4756 sq. ft

Basement: 928 sq. ft, 1st Floor: 2374 sq. ft, 2nd Floor: 1454 sq. ft

Excluded: Low ceiling 676 sq. ft, Basement 47 sq. ft, Deck 1007 sq. ft, Open to below 378 sq. ft, Walls: 335 sq. ft

Property summary

 **3** Floors

 **5** Bedrooms

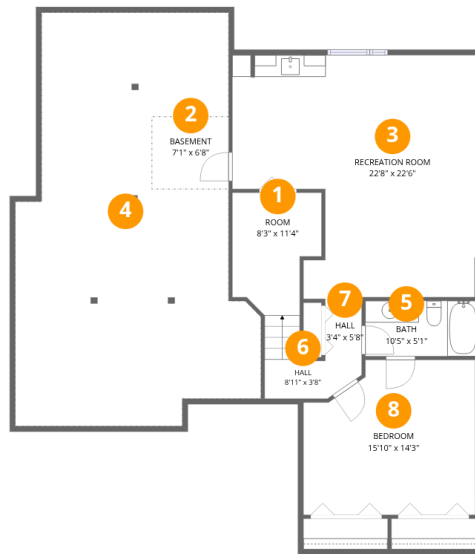
 **4** Bathrooms

Home data report

7811 S County Rd 13, Fort Collins, CO, US

 **1**
Half baths

 **1**
Garages



Room dimensions

Floor 1 Below grade

Total: 928sqft

Excluded: 723sqft

#		Dimensions	sqft	Counted as living area
1	Room	8'3" x 11'4"	79 sq. ft	Yes
2	Basement	7'1" x 6'8"	47 sq. ft	No
3	Recreation Room	22'8" x 22'6"	428 sq. ft	Yes
4	Crawl Space	22'7" x 38'1"	676 sq. ft	No
5	Bath	10'5" x 5'1"	53 sq. ft	Yes
6	Hall	8'11" x 3'8"	41 sq. ft	Yes
7	Hall	3'4" x 5'8"	19 sq. ft	Yes
8	Bedroom	15'10" x 14'3"	213 sq. ft	Yes



Room dimensions

Floor 2

Total: 2374 sqft

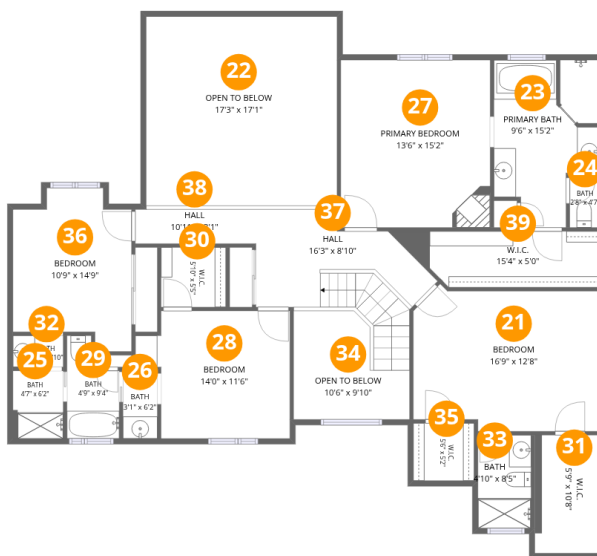
Excluded: 1007 sqft

#		Dimensions	sqft	Counted as living area
9	Deck	44'6" x 35'5"	1007 sq. ft	No
10	Office	13'1" x 11'7"	151 sq. ft	Yes
11	Bath	4'9" x 4'0"	19 sq. ft	Yes
12	Dining Area	16'9" x 13'1"	214 sq. ft	Yes
13	Kitchen	11'1" x 14'8"	162 sq. ft	Yes
14	Living Room	16'9" x 19'4"	315 sq. ft	Yes
15	Garage	23'3" x 30'8"	662 sq. ft	Yes
16	Foyer	10'10" x 9'10"	137 sq. ft	Yes
17	Family Room	17'7" x 17'1"	299 sq. ft	Yes
18	Laundry	13'1" x 8'9"	81 sq. ft	Yes
19	Hall	4'8" x 9'2"	42 sq. ft	Yes

Home data report

7811 S County Rd 13, Fort Collins, CO, US

#		Dimensions	sqft	Counted as living area
20	Breakfast Nook	14'3" x 18'11"	225 sq. ft	Yes



Room dimensions

Floor 3

Total: 1454 sqft

Excluded: 378 sqft

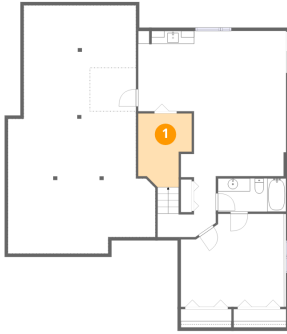
#		Dimensions	sqft	Counted as living area
21	Bedroom	16'9" x 12'8"	205 sq. ft	Yes
22	Open To Below	17'3" x 17'1"	295 sq. ft	No
23	Primary Bath	9'6" x 15'2"	120 sq. ft	Yes
24	Bath	2'8" x 4'7"	12 sq. ft	Yes
25	Bath	4'7" x 6'2"	28 sq. ft	Yes
26	Bath	3'1" x 6'2"	19 sq. ft	Yes
27	Primary Bedroom	13'6" x 15'2"	204 sq. ft	Yes
28	Bedroom	14'0" x 11'6"	141 sq. ft	Yes
29	Bath	4'9" x 9'4"	36 sq. ft	Yes
30	W.I.C.	5'10" x 5'5"	32 sq. ft	Yes
31	W.I.C.	5'9" x 10'8"	62 sq. ft	Yes

Home data report

7811 S County Rd 13, Fort Collins, CO, US

#		Dimensions	sqft	Counted as living area
32	Bath	4'7" x 2'10"	13 sq. ft	Yes
33	Bath	4'10" x 8'5"	40 sq. ft	Yes
34	Open To Below	10'6" x 9'10"	83 sq. ft	No
35	W.I.C.	5'6" x 5'2"	29 sq. ft	Yes
36	Bedroom	10'9" x 14'9"	134 sq. ft	Yes
37	Hall	16'3" x 8'10"	140 sq. ft	Yes
38	Hall	10'11" x 3'1"	37 sq. ft	Yes
39	W.I.C.	15'4" x 5'0"	82 sq. ft	Yes

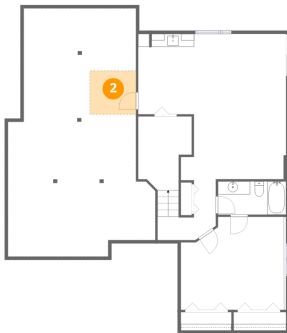
1 Floor 1 - Room



Dimensions: 8'3" x 11'4"
Area: 79 sq. ft
Counted as living area: Yes

Heated: Yes
Finished: Yes
Enclosed: Yes
Contiguous: Yes
Permitted: Yes
Wet space: No
Addition: No
Conversion: No

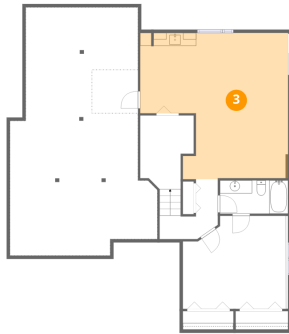
2 Floor 1 - Basement



Dimensions: 7'1" x 6'8"
Area: 47 sq. ft
Counted as living area: No

Heated: Yes
Finished: No
Enclosed: Yes
Contiguous: Yes
Permitted: Yes
Wet space: No
Addition: No
Conversion: No

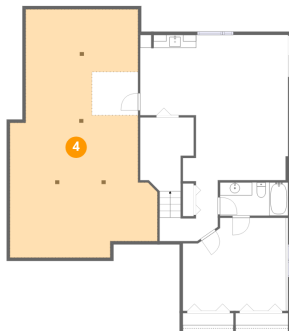
3 Floor 1 - Recreation Room



Dimensions: 22'8" x 22'6"
Area: 428 sq. ft
Counted as living area: Yes

Heated: Yes
Finished: Yes
Enclosed: Yes
Contiguous: Yes
Permitted: Yes
Wet space: No
Addition: No
Conversion: No

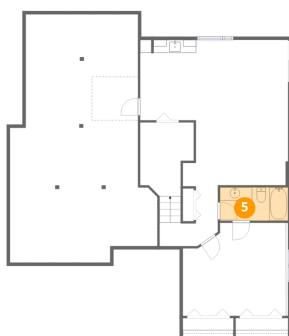
4 Floor 1 - Crawl Space



Dimensions: 22'7" x 38'1"
Area: 676 sq. ft
Counted as living area: No

Heated: No
Finished: No
Enclosed: No
Contiguous: Yes
Permitted: No
Wet space: No
Addition: No
Conversion: No

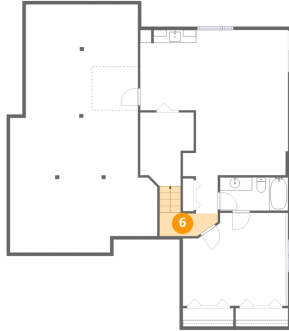
5 Floor 1 - Bath



Dimensions: 10'5" x 5'1"
Area: 53 sq. ft
Counted as living area: Yes

Heated: Yes
Finished: Yes
Enclosed: Yes
Contiguous: Yes
Permitted: Yes
Wet space: Yes
Addition: No
Conversion: No

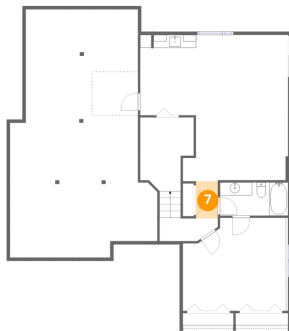
6 Floor 1 - Hall



Dimensions: 8'11" x 3'8"
Area: 41 sq. ft
Counted as living area: Yes

Heated: Yes
Finished: Yes
Enclosed: Yes
Contiguous: Yes
Permitted: Yes
Wet space: No
Addition: No
Conversion: No

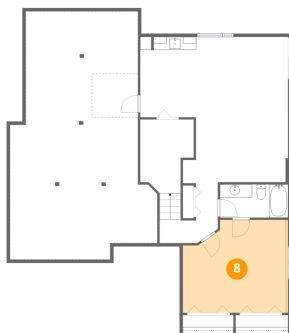
7 Floor 1 - Hall



Dimensions: 3'4" x 5'8"
Area: 19 sq. ft
Counted as living area: Yes

Heated: Yes
Finished: Yes
Enclosed: Yes
Contiguous: Yes
Permitted: Yes
Wet space: No
Addition: No
Conversion: No

8 Floor 1 - Bedroom



Dimensions: 15'10" x 14'3"
Area: 213 sq. ft
Counted as living area: Yes

Heated: Yes
Finished: Yes
Enclosed: Yes
Contiguous: Yes
Permitted: Yes
Wet space: No
Addition: No
Conversion: No

9 Floor 2 - Deck



Dimensions: 44'6" x 35'5"
Area: 1007 sq. ft
Counted as living area: No

Heated: No
Finished: No
Enclosed: No
Contiguous: Yes
Permitted: Yes
Wet space: No
Addition: No
Conversion: No

10 Floor 2 - Office



Dimensions: 13'1" x 11'7"
Area: 151 sq. ft
Counted as living area: Yes

Heated: Yes
Finished: Yes
Enclosed: Yes
Contiguous: Yes
Permitted: Yes
Wet space: No
Addition: No
Conversion: No

11 Floor 2 - Bath



Dimensions: 4'9" x 4'0"
Area: 19 sq. ft
Counted as living area: Yes

Heated: Yes
Finished: Yes
Enclosed: Yes
Contiguous: Yes
Permitted: Yes
Wet space: Yes
Addition: No
Conversion: No

12 Floor 2 - Dining Area



Dimensions: 16'9" x 13'1"
Area: 214 sq. ft
Counted as living area: Yes

Heated: Yes
Finished: Yes
Enclosed: Yes
Contiguous: Yes
Permitted: Yes
Wet space: No
Addition: No
Conversion: No

13 Floor 2 - Kitchen



Dimensions: 11'1" x 14'8"
Area: 162 sq. ft
Counted as living area: Yes

Heated: Yes
Finished: Yes
Enclosed: Yes
Contiguous: Yes
Permitted: Yes
Wet space: No
Addition: No
Conversion: No

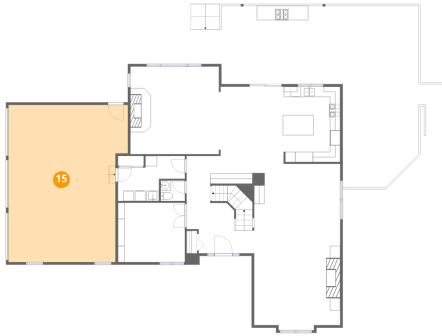
14 Floor 2 - Living Room



Dimensions: 16'9" x 19'4"
Area: 315 sq. ft
Counted as living area: Yes

Heated: Yes
Finished: Yes
Enclosed: Yes
Contiguous: Yes
Permitted: Yes
Wet space: No
Addition: No
Conversion: No

15 Floor 2 - Garage



Dimensions: 23'3" x 30'8"
Area: 662 sq. ft
Counted as living area: No

Heated: No
Finished: Yes
Enclosed: Yes
Contiguous: Yes
Permitted: Yes
Wet space: No
Addition: No
Conversion: No

16 Floor 2 - Foyer



Dimensions: 10'10" x 9'10"
Area: 137 sq. ft
Counted as living area: Yes

Heated: Yes
Finished: Yes
Enclosed: Yes
Contiguous: Yes
Permitted: Yes
Wet space: No
Addition: No
Conversion: No

17 Floor 2 - Family Room



Dimensions: 17'7" x 17'1"
Area: 299 sq. ft
Counted as living area: Yes

Heated: Yes
Finished: Yes
Enclosed: Yes
Contiguous: Yes
Permitted: Yes
Wet space: No
Addition: No
Conversion: No

18 Floor 2 - Laundry



Dimensions: 13'1" x 8'9"
Area: 81 sq. ft
Counted as living area: Yes

Heated: Yes
Finished: Yes
Enclosed: Yes
Contiguous: Yes
Permitted: Yes
Wet space: No
Addition: No
Conversion: No

19 Floor 2 - Hall



Dimensions: 4'8" x 9'2"
Area: 42 sq. ft
Counted as living area: Yes

Heated: Yes
Finished: Yes
Enclosed: Yes
Contiguous: Yes
Permitted: Yes
Wet space: No
Addition: No
Conversion: No

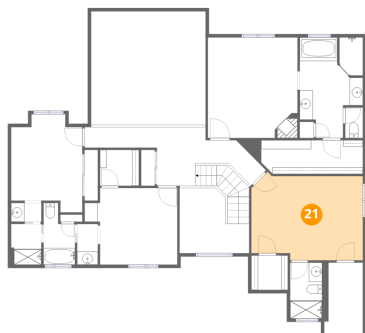
20 Floor 2 - Breakfast Nook



Dimensions: 14'3" x 18'11"
Area: 225 sq. ft
Counted as living area: Yes

Heated: Yes
Finished: Yes
Enclosed: Yes
Contiguous: Yes
Permitted: Yes
Wet space: No
Addition: No
Conversion: No

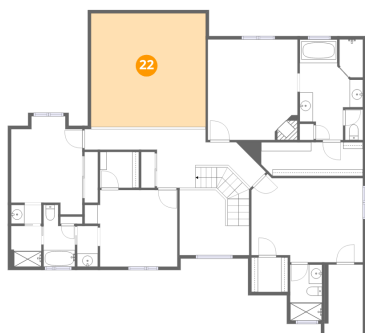
21 Floor 3 - Bedroom



Dimensions: 16'9" x 12'8"
Area: 205 sq. ft
Counted as living area: Yes

Heated: Yes
Finished: Yes
Enclosed: Yes
Contiguous: Yes
Permitted: Yes
Wet space: No
Addition: No
Conversion: No

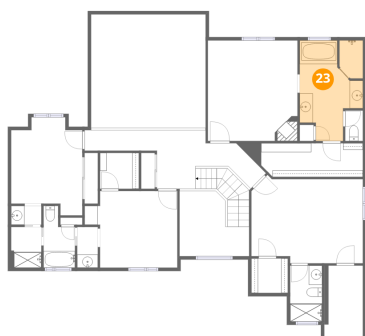
22 Floor 3 - Open To Below



Dimensions: 17'3" x 17'1"
Area: 295 sq. ft
Counted as living area: No

Heated: No
Finished: No
Enclosed: No
Contiguous: Yes
Permitted: No
Wet space: No
Addition: No
Conversion: No

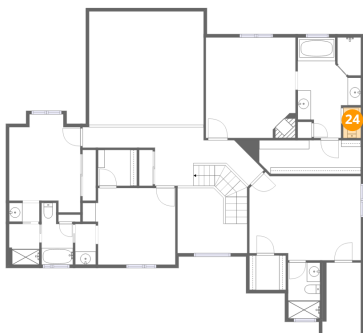
23 Floor 3 - Primary Bath



Dimensions: 9'6" x 15'2"
Area: 120 sq. ft
Counted as living area: Yes

Heated: Yes
Finished: Yes
Enclosed: Yes
Contiguous: Yes
Permitted: Yes
Wet space: Yes
Addition: No
Conversion: No

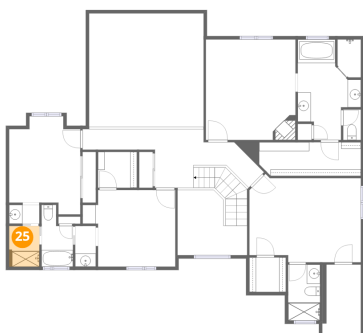
24 Floor 3 - Bath



Dimensions: 2'8" x 4'7"
Area: 12 sq. ft
Counted as living area: Yes

Heated: Yes
Finished: Yes
Enclosed: Yes
Contiguous: Yes
Permitted: Yes
Wet space: Yes
Addition: No
Conversion: No

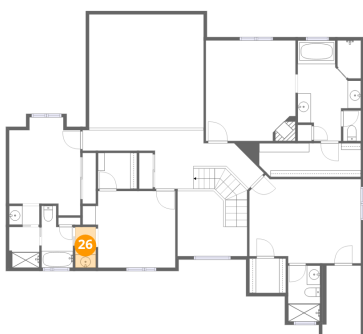
25 Floor 3 - Bath



Dimensions: 4'7" x 6'2"
Area: 28 sq. ft
Counted as living area: Yes

Heated: Yes
Finished: Yes
Enclosed: Yes
Contiguous: Yes
Permitted: Yes
Wet space: Yes
Addition: No
Conversion: No

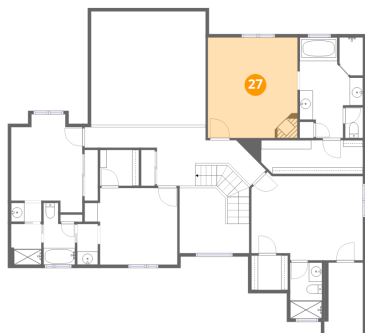
26 Floor 3 - Bath



Dimensions: 3'1" x 6'2"
Area: 19 sq. ft
Counted as living area: Yes

Heated: Yes
Finished: Yes
Enclosed: Yes
Contiguous: Yes
Permitted: Yes
Wet space: Yes
Addition: No
Conversion: No

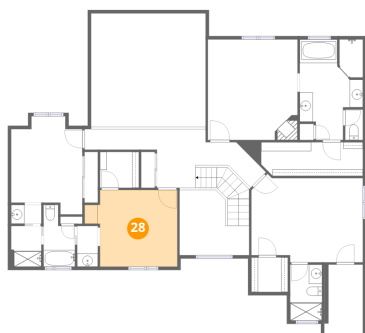
27 Floor 3 - Primary Bedroom



Dimensions: 13'6" x 15'2"
Area: 204 sq. ft
Counted as living area: Yes

Heated: Yes
Finished: Yes
Enclosed: Yes
Contiguous: Yes
Permitted: Yes
Wet space: No
Addition: No
Conversion: No

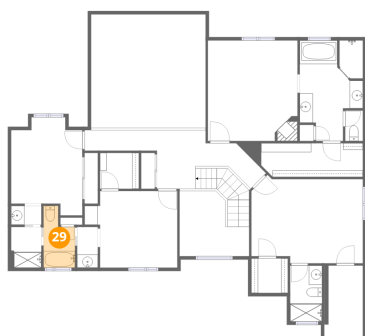
28 Floor 3 - Bedroom



Dimensions: 14'0" x 11'6"
Area: 141 sq. ft
Counted as living area: Yes

Heated: Yes
Finished: Yes
Enclosed: Yes
Contiguous: Yes
Permitted: Yes
Wet space: No
Addition: No
Conversion: No

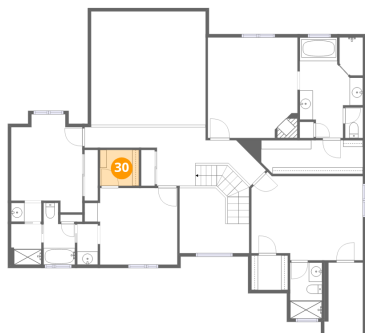
29 Floor 3 - Bath



Dimensions: 4'9" x 9'4"
Area: 36 sq. ft
Counted as living area: Yes

Heated: Yes
Finished: Yes
Enclosed: Yes
Contiguous: Yes
Permitted: Yes
Wet space: Yes
Addition: No
Conversion: No

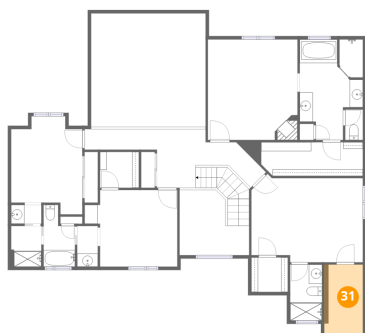
30 Floor 3 - W.I.C.



Dimensions: 5'10" x 5'5"
Area: 32 sq. ft
Counted as living area: Yes

Heated: Yes
Finished: Yes
Enclosed: Yes
Contiguous: Yes
Permitted: Yes
Wet space: No
Addition: No
Conversion: No

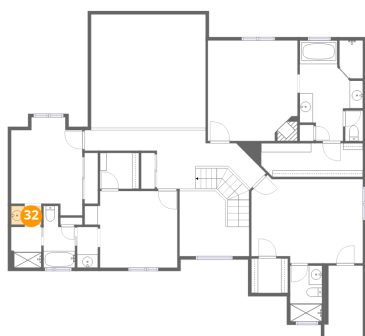
31 Floor 3 - W.I.C.



Dimensions: 5'9" x 10'8"
Area: 62 sq. ft
Counted as living area: Yes

Heated: Yes
Finished: Yes
Enclosed: Yes
Contiguous: Yes
Permitted: Yes
Wet space: No
Addition: No
Conversion: No

32 Floor 3 - Bath



Dimensions: 4'7" x 2'10"
Area: 13 sq. ft
Counted as living area: Yes

Heated: Yes
Finished: Yes
Enclosed: Yes
Contiguous: Yes
Permitted: Yes
Wet space: Yes
Addition: No
Conversion: No

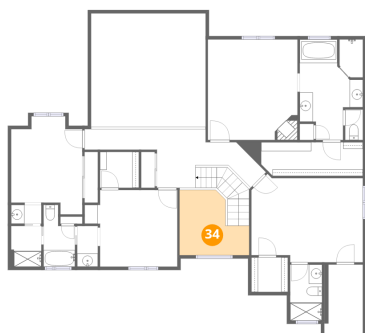
33 Floor 3 - Bath



Dimensions: 4'10" x 8'5"
Area: 40 sq. ft
Counted as living area: Yes

Heated: Yes
Finished: Yes
Enclosed: Yes
Contiguous: Yes
Permitted: Yes
Wet space: Yes
Addition: No
Conversion: No

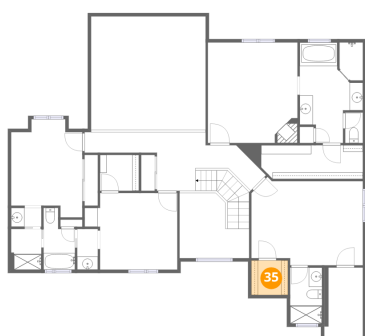
34 Floor 3 - Open To Below



Dimensions: 10'6" x 9'10"
Area: 83 sq. ft
Counted as living area: No

Heated: No
Finished: No
Enclosed: No
Contiguous: Yes
Permitted: No
Wet space: No
Addition: No
Conversion: No

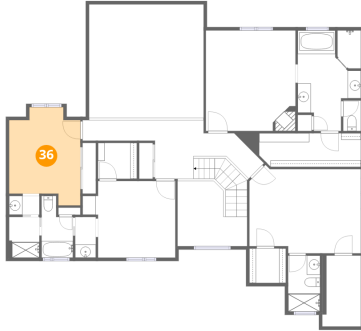
35 Floor 3 - W.I.C.



Dimensions: 5'6" x 5'2"
Area: 29 sq. ft
Counted as living area: Yes

Heated: Yes
Finished: Yes
Enclosed: Yes
Contiguous: Yes
Permitted: Yes
Wet space: No
Addition: No
Conversion: No

36 Floor 3 - Bedroom



Dimensions: 10'9" x 14'9"
Area: 134 sq. ft
Counted as living area: Yes

Heated: Yes
Finished: Yes
Enclosed: Yes
Contiguous: Yes
Permitted: Yes
Wet space: No
Addition: No
Conversion: No

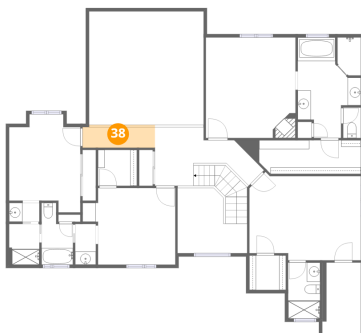
37 Floor 3 - Hall



Dimensions: 16'3" x 8'10"
Area: 140 sq. ft
Counted as living area: Yes

Heated: Yes
Finished: Yes
Enclosed: Yes
Contiguous: Yes
Permitted: Yes
Wet space: No
Addition: No
Conversion: No

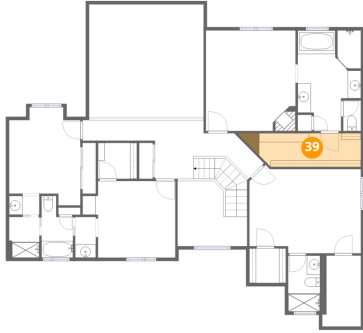
38 Floor 3 - Hall



Dimensions: 10'11" x 3'1"
Area: 37 sq. ft
Counted as living area: Yes

Heated: Yes
Finished: Yes
Enclosed: Yes
Contiguous: Yes
Permitted: Yes
Wet space: No
Addition: No
Conversion: No

39 Floor 3 - W.I.C.



Dimensions: 15'4" x 5'0"
Area: 82 sq. ft
Counted as living area: Yes

Heated: Yes
Finished: Yes
Enclosed: Yes
Contiguous: Yes
Permitted: Yes
Wet space: No
Addition: No
Conversion: No