

2006 Ledford Road, Greensboro, Guilford County, North Carolina, United States, 27406

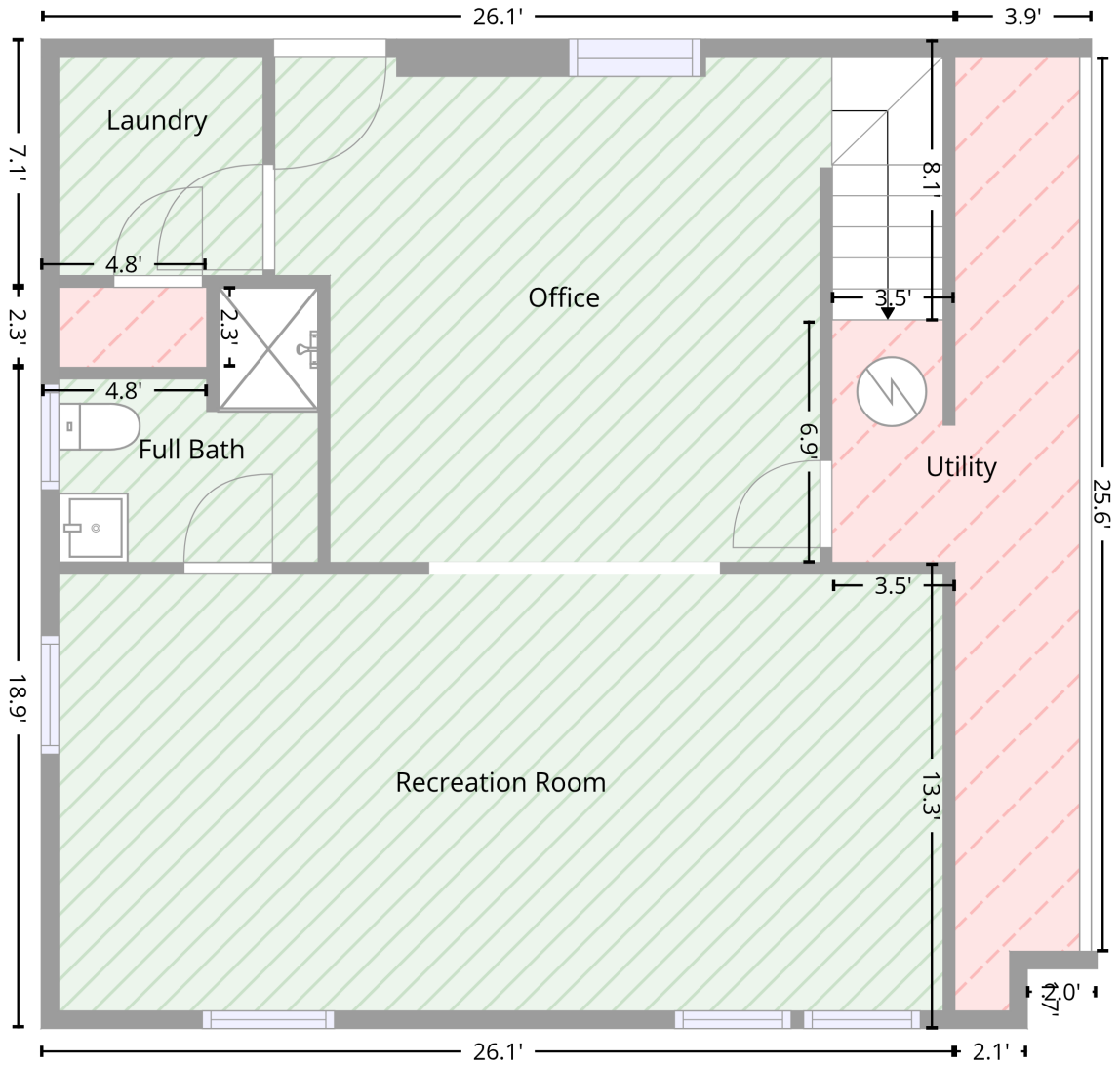
Total area: 2422 sq. ft
Gross living area: 2288 sq. ft

Finished area: 2288 sq. ft
Non-standard finished area: 0 sq. ft

Level 1

703 sq. ft Finished Area
Above Grade

134 sq. ft Unfinished Area
Above Grade



Total area: 837 sq. ft
Gross living area: 703 sq. ft

Finished area: 703 sq. ft
Non-standard finished area: 0 sq. ft

2006 Ledford Road, Greensboro, Guilford County, North Carolina, United States, 27406

Total area: 2422 sq. ft
Gross living area: 2288 sq. ft

Finished area: 2288 sq. ft
Non-standard finished area: 0 sq. ft

Level 1

Space	Area (sq. ft)	Calculation <small>Coordinate Polygon Area Algorithm using inches</small>
Finished Area • Living area • Finished Area	703	$-\left((313.8 + 313.8) * (116.4 - 213) + (313.8 + 271.7) * (213 - 213) + (271.7 + 271.7) * (213 - 296) + (271.7 + 313.8) * (296 - 296) + (313.8 + 313.8) * (296 - 455.9) + (313.8 + 0.7) * (455.9 - 455.9) + (0.7 + 0.7) * (455.9 - 229.1) + (0.7 + 57.4) * (229.1 - 229.1) + (57.4 + 57.4) * (229.1 - 201.6) + (57.4 + 0.7) * (201.6 - 201.6) + (0.7 + 0.7) * (201.6 - 116.4) + (0.7 + 313.8) * (116.4 - 116.4)\right) * 0.5 * 0.00694$
UTILITY • Non-living area • Unfinished Area	123	$-\left((360.6 + 360.6) * (116.4 - 122.4) + (360.6 + 356.6) * (122.4 - 122.4) + (356.6 + 356.6) * (122.4 - 429.4) + (356.6 + 362.6) * (429.4 - 429.4) + (362.6 + 362.6) * (429.4 - 435.4) + (362.6 + 338.6) * (435.4 - 435.4) + (338.6 + 338.6) * (435.4 - 455.9) + (338.6 + 313.8) * (455.9 - 455.9) + (313.8 + 313.8) * (455.9 - 296) + (313.8 + 271.7) * (296 - 296) + (271.7 + 271.7) * (296 - 213) + (271.7 + 313.8) * (213 - 213) + (313.8 + 313.8) * (213 - 116.4) + (313.8 + 360.6) * (116.4 - 116.4)\right) * 0.5 * 0.00694$
UNDEFINED • Non-living area • Unfinished Area	11	$-\left((57.4 + 57.4) * (201.6 - 229.1) + (57.4 + 0.7) * (229.1 - 229.1) + (0.7 + 0.7) * (229.1 - 201.6) + (0.7 + 57.4) * (201.6 - 201.6)\right) * 0.5 * 0.00694$

2006 Ledford Road, Greensboro, Guilford County, North Carolina, United States, 27406

Total area: 2422 sq. ft
Gross living area: 2288 sq. ft

Finished area: 2288 sq. ft
Non-standard finished area: 0 sq. ft

Level 2



Total area: 1585 sq. ft
Gross living area: 1585 sq. ft

Finished area: 1585 sq. ft
Non-standard finished area: 0 sq. ft

Space	Area (sq. ft)	Calculation <small>Coordinate Polygon Area Algorithm using inches</small>
Finished Area • Living area • Finished Area	1585	$-((512.2 + 512.2) * (-3.6 - 116.4) + (512.2 + 598.3) * (116.4 - 116.4) + (598.3 + 598.3) * (116.4 - 122.4) + (598.3 + 604.3) * (122.4 - 122.4) + (604.3 + 604.3) * (122.4 - 455.9) + (604.3 + 396.8) * (455.9 - 455.9) + (396.8 + 396.8) * (455.9 - 435.4) + (396.8 + 338.6) * (435.4 - 435.4) + (338.6 + 338.6) * (435.4 - 455.9) + (338.6 + 0.7) * (455.9 - 455.9) + (0.7 + 0.7) * (455.9 - 116.4) + (0.7 + 307.8) * (116.4 - 116.4) + (307.8 + 307.8) * (116.4 - -3.6) + (307.8 + 512.2) * (-3.6 - -3.6)) * 0.5 * 0.00694$
GARAGE • Attached Garage	479	$-((841.6 + 841.6) * (122.4 - 413.3) + (841.6 + 604.3) * (413.3 - 413.3) + (604.3 + 604.3) * (413.3 - 122.4) + (604.3 + 841.6) * (122.4 - 122.4)) * 0.5 * 0.00694$

2006 Ledford Road, Greensboro, Guilford County, North Carolina, United States, 27406

Total area: 2422 sq. ft
Gross living area: 2288 sq. ft

Finished area: 2288 sq. ft
Non-standard finished area: 0 sq. ft

Property UPD

Data	Value
Structure	1
Unit	1
Level Number	1
Below Grade	false
Level Low Ceiling	false
ADU Indicator	false
Total Area	837
Finished Area	703
Non-Standard Finished Area	0
Structure	1
Unit	1
Level Number	2
Below Grade	false
Level Low Ceiling	false
ADU Indicator	false
Total Area	1585
Finished Area	1585
Non-Standard Finished Area	0